

790 MADISON AVENUE

Southwest Corner of Madison Avenue and East 67th Street

SECOND FLOOR GALLERY/OFFICE SPACE FOR LEASE



- Rare Office Opportunity on Madison Avenue
- Entrance on Madison Avenue
- Full Service office building with Full-Time Guard/Doorman
- Dry use only—No Medical
- Excellent for Showroom, Fashion, Gallery, or General Offices
- Monday through Saturday access 7:45 AM-10:00 PM
- Second Floor Window (Third Window from the Left)

SIZE

Suite 202—2nd Floor—400 square feet

TERM

Short Term or Long Term

POSSESSION

Arranged

TENANT

Aloha Marina

ELECTRIC

\$150 per mo.

DOORMAN

\$100 per mo.

EXPOSURE

2nd Floor Show Window Facing Madison Avenue

ASKING RENT

\$4,000 Per Month

Exclusively represented by:

THE **DANA** COMMERCIAL TEAM

AT DOUGLAS **ELLIMAN** REAL ESTATE

GARY **DANA**

212.692.6183

gdana@elliman.com

RICK **DANA**

212.692.6182

rdana@elliman.com

CHRIS **DANA**

212.455.4721

cdana@elliman.com

© 2017 DOUGLAS ELLIMAN REAL ESTATE. ALL MATERIAL PRESENTED HEREIN IS INTENDED FOR INFORMATION PURPOSES ONLY. WHILE THIS INFORMATION IS BELIEVED TO BE CORRECT, IT IS REPRESENTED SUBJECT TO ERRORS, OMISSIONS, CHANGES OR WITHDRAWAL WITHOUT NOTICE. ALL PROPERTY INFORMATION, INCLUDING, BUT NOT LIMITED TO SQUARE FOOTAGE, ROOM COUNT, NUMBER OF BEDROOMS AND THE SCHOOL DISTRICT IN PROPERTY LISTINGS SHOULD BE VERIFIED BY YOUR OWN ATTORNEY, ARCHITECT OR ZONING EXPERT. IF YOUR PROPERTY IS CURRENTLY LISTED WITH ANOTHER REAL ESTATE BROKER, PLEASE DISREGARD THIS OFFER. IT IS NOT OUR INTENTION TO SOLICIT THE OFFERINGS OF OTHER REAL ESTATE BROKERS. WE COOPERATE WITH THEM FULLY. EQUAL HOUSING OPPORTUNITY.



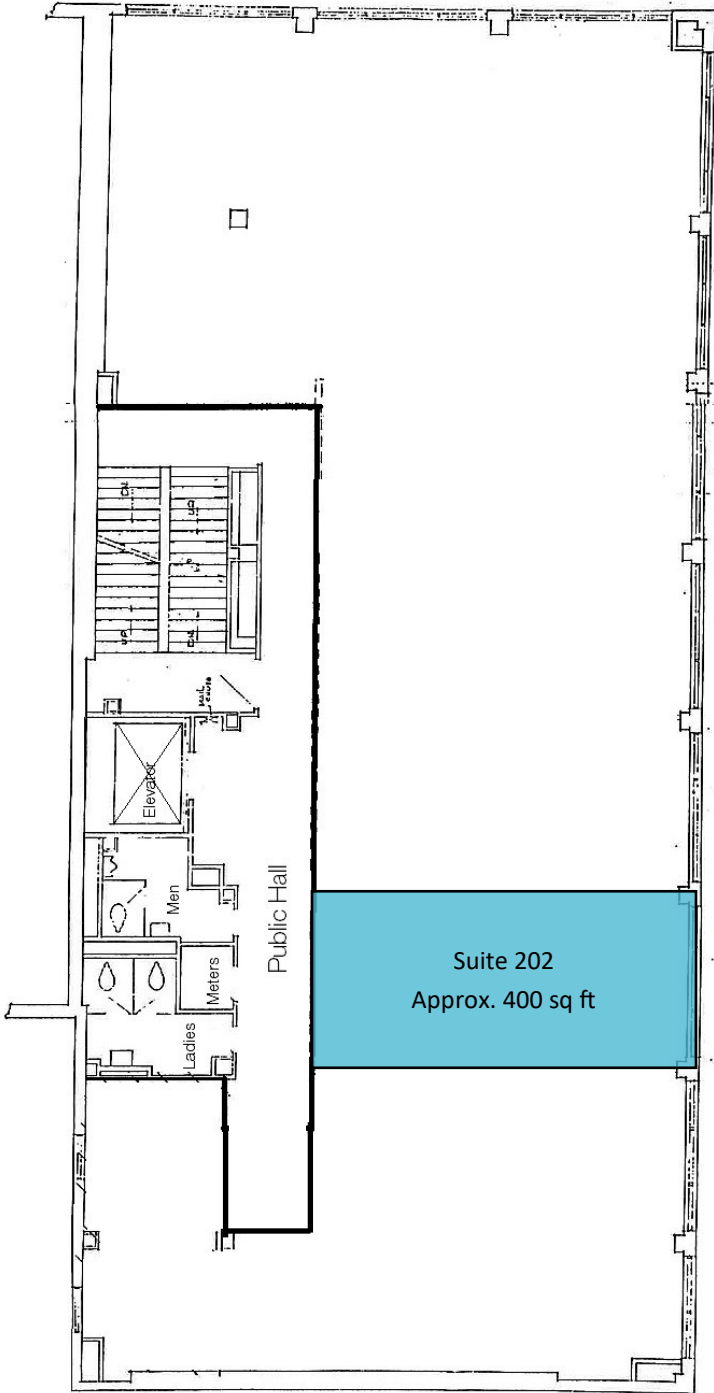
THE **DANA** COMMERCIAL TEAM

EST. 1911

Douglas Elliman
REAL ESTATE

790 Madison Avenue

East 67th Street



— Madison Avenue —



THE **DANA** COMMERCIAL TEAM
AT DOUGLAS ELLIMAN REAL ESTATE

GARY **DANA** 212.692.6183
 RICK **DANA** 212.692.6182
 CHRIS **DANA** 212.455.4721

gdana@elliman.com
 rdana@elliman.com
 cdana@elliman.com

THE **DANA** COMMERCIAL TEAM
 EST. 1911
Douglas Elliman
 REAL ESTATE

© 2017 DOUGLAS ELLIMAN REAL ESTATE. ALL MATERIAL PRESENTED HEREIN IS INTENDED FOR INFORMATION PURPOSES ONLY. WHILE THIS INFORMATION IS BELIEVED TO BE CORRECT, IT IS REPRESENTED SUBJECT TO ERRORS, OMISSIONS, CHANGES OR WITHDRAWAL WITHOUT NOTICE. ALL PROPERTY INFORMATION, INCLUDING, BUT NOT LIMITED TO SQUARE FOOTAGE, ROOM COUNT, NUMBER OF BEDROOMS AND THE SCHOOL DISTRICT IN PROPERTY LISTINGS SHOULD BE VERIFIED BY YOUR OWN ATTORNEY, ARCHITECT OR ZONING EXPERT. IF YOUR PROPERTY IS CURRENTLY LISTED WITH ANOTHER REAL ESTATE BROKER, PLEASE DISREGARD THIS OFFER. IT IS NOT OUR INTENTION TO SOLICIT THE OFFERINGS OF OTHER REAL ESTATE BROKERS. WE COOPERATE WITH THEM FULLY. EQUAL HOUSING OPPORTUNITY.