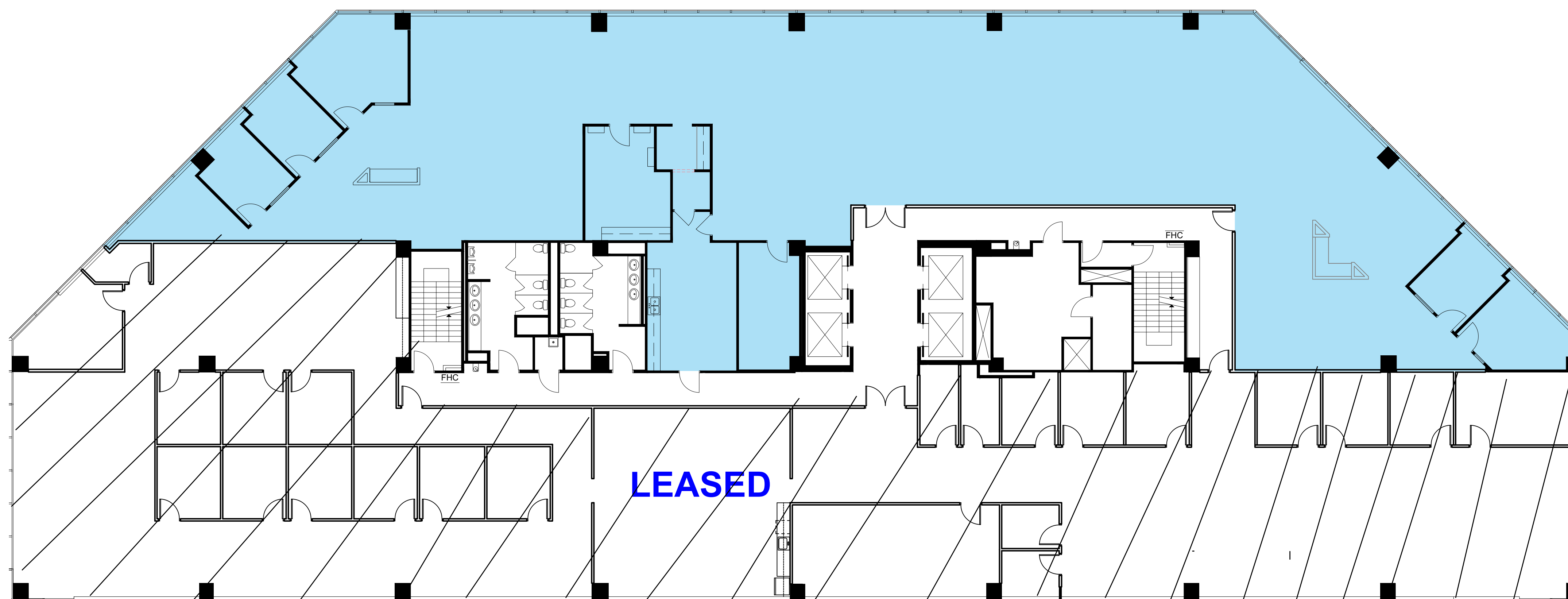


# Suite 520 - 8,730 SF



**PROJECT**

CYPRESS FINANCIAL CENTER  
5TH FLOOR

5900 N ANDREWS AVE  
FORT LAUDERDALE  
FLORIDA

**CONSULTANT**

**REVISIONS**

No.	DATE	DESCRIPTION

SIGNATURES OF APPROVAL ADDITIONS, ALTERATIONS,  
OR REVISIONS TO THESE DRAWINGS AFTER APPROVAL  
HAS BEEN GIVEN, CONSTITUTE A CHANGE IN THE  
SCOPE OF WORK AS OUTLINED AND WILL BE  
ACCOMPLISHED AT THE CLIENT'S EXPENSE.

CLIENT: \_\_\_\_\_ DATE: \_\_\_\_\_

**PROJECT PHASE**

- SITE PLANNING
- SCHEMATIC DESIGN
- DESIGN DEVELOPMENT
- CONSTRUCTION DOCUMENTS

**SCHEMATIC SPACE PLAN**

PROJECT NUMBER:	CFC.77
ISSUED:	9/27/24
DRAWN BY:	EMG
CHECKED BY:	MAB
FILENAME:	CFC.77SDP.dwg

SEAL	SHEET
	<b>SP-1</b>

