



AVAILABLE MEDICAL SPACE

.....

Medical space available in the heart of the Beverly Hills triangle

.....

LOCATION

415 N Crescent Drive
Beverly Hills CA 90210

IDEAL USES

Medical space

NUMBER OF FLOORS

3 Stories

RENT

Asking rate - Negotiable

PROPERTY HIGHLIGHTS

Well located medical building in
Beverly Hills

PARKING

3/1000 Parking Ratio \$250 - \$300
Free 2 hour patient parking at BH city
structures nearby

SEP MELAMED

BRE #01219182

(310)722-1750 Direct

Sep@PrimePropertiesRE.com



AVAILABLE SPACES

.....

Suite Number	SF Available	Term	Type
110	3,201 RSF	Negotiable	Office/Medical
130	2,587 RSF	Negotiable	Office/Medical
131	2,587 RSF	Negotiable	Retail
140	1,082 RSF	Negotiable	Office/Medical
230	667 RSF	Negotiable	Office/Medical
235	733 RSF	Negotiable	Office/Medical
240	1,983-2,650 RSF	Negotiable	Office/Medical
355	788 RSF	Negotiable	Office/Medical
380	1,296 RSF	Negotiable	Medical

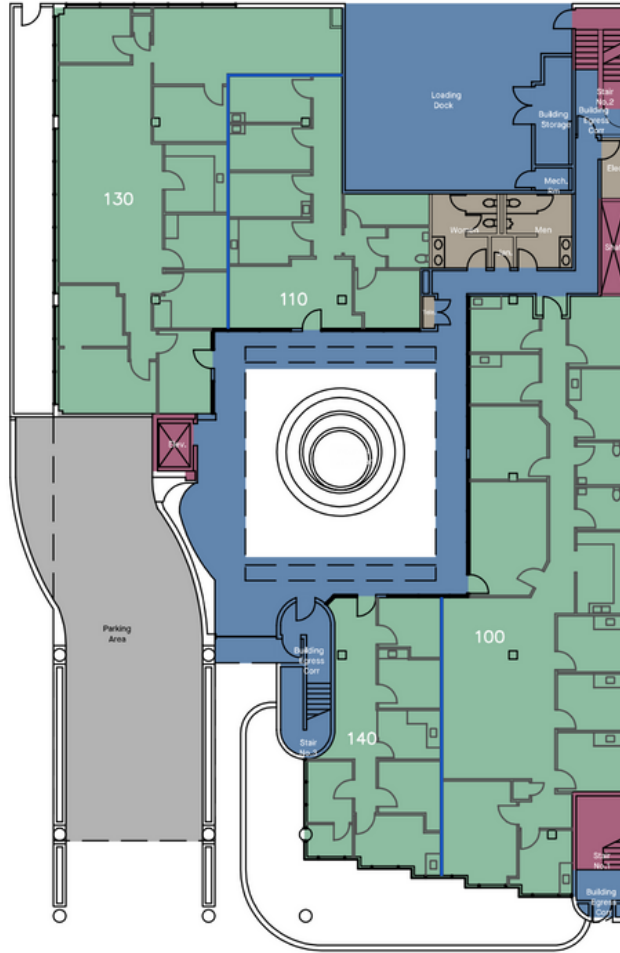
All the spaces on the third floor can be combined

SEP MELAMED

BRE#01219182

(310)722-1750 Direct

Sep@PrimePropertiesRE.com



SUITE	OCCUPANT
100	
110	

RSF
3,200.86
1,341.65

SUITE	OCCUPANT
130	
140	

RSF
2,559.25
1,081.61



3.30.20 415 North Crescent

Floor 1
 415 North Crescent Drive
 Beverly Hills, CA 90210

Report ID 1

Final Composite Drawing

RSF - Target Rentable Area

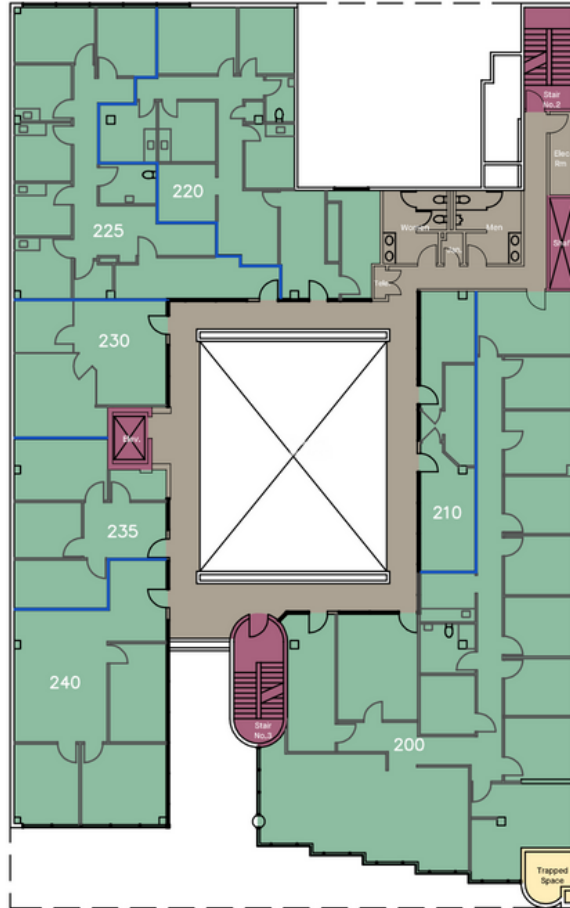


SEP MELAMED

BRE#01219182

(310)722-1750 Direct

Sep@PrimePropertiesRE.com



SUITE	OCCUPANT
200	
210	
220	
225	

RSF
3,738.60
550.37
1,596.73
1,548.38

SUITE	OCCUPANT
230	
235	
240	

RSF
666.92
733.43
1,249.85



3.30.20 415 North Crescent

Floor 2
 415 North Crescent Drive
 Beverly Hills, CA 90210

Report ID 1

Final Composite Drawing

RSF - Target Rentable Area

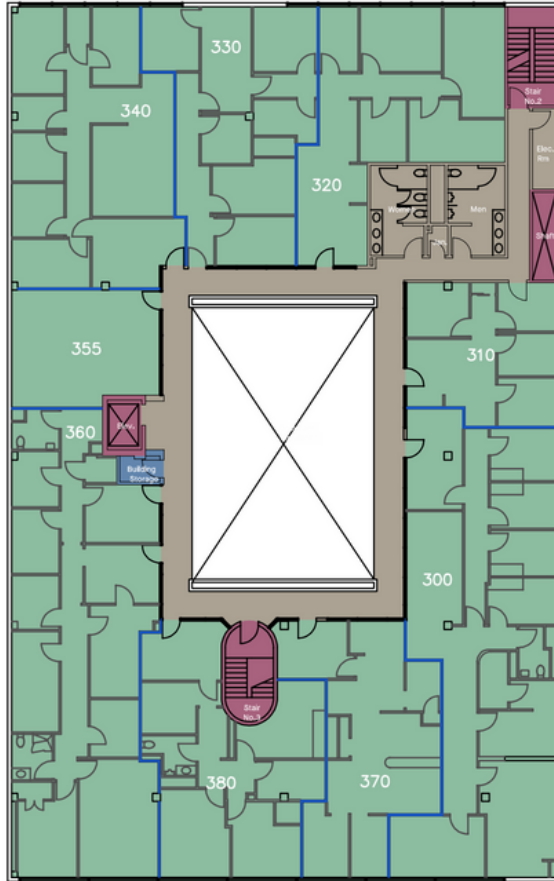


SEP MELAMED

BRE#01219182

(310)722-1750 Direct

Sep@PrimePropertiesRE.com



SUITE	OCCUPANT
300	
310	
320	
330	
340	

RSF
2,357.08
754.52
1,358.49
1,324.61
1,615.57

SUITE	OCCUPANT
355	
360	
370	
380	

RSF
622.99
2,315.41
1,098.10
1,296.12



3.30.20 415 North Crescent

Floor 3 415 North Crescent Drive
 Beverly Hills, CA 90210

Report ID 1

Final Composite Drawing

RSF - Target Rentable Area



SEP MELAMED

BRE#01219182

(310)722-1750 Direct

Sep@PrimePropertiesRE.com