

1,068 - 2,517 SF FOR LEASE



OCEANSIDE COMMERCE CENTER

4747 - 4751 Oceanside Blvd. & 1818 - 1820 Peacock Blvd. - Oceanside, CA 92056

PROPERTY DETAILS

- Industrial space for lease
- Frontage on Oceanside Blvd.
- 3 phase power
- Skylights & grade level loading doors in all suites
- New exterior features & landscaping
- Climate controlled office improvements
- Located in close proximity to public transit
- New signage program
- **LEASE RATE: \$1.40/SF + CAM (\$0.35/SF)**



For more info contact: Whitney Robinson | whitney@rafpg.com | (858) 314-3116 ext. 107



1,068 - 2,517 SF FOR LEASE

4747 - 4751 Oceanside Blvd. & 1818 - 1820 Peacock Blvd.

SITE PLAN & AVAILABILITY CHART

Address	Suite	SF	Power	Base Rent	CAM	Availability
4747 Oceanside Blvd.	G	1,419 SF	TBD	\$1.40/SF	\$0.35/SF	9/1/2026
4749 Oceanside Blvd.	C & D1	2,517 SF	200 amps/208v	\$1.40/SF	\$0.35/SF	NOW
4751 Oceanside Blvd.	D	1,697 SF	100 amps	\$1.40/SF	\$0.35/SF	NOW
4751 Oceanside Blvd.	G	1,847 SF	100 amps	\$1.40/SF	\$0.35/SF	NOW
1820 Peacock Blvd.	D	1,068 SF	TBD	\$1.40/SF	\$0.35/SF	11/1/2026



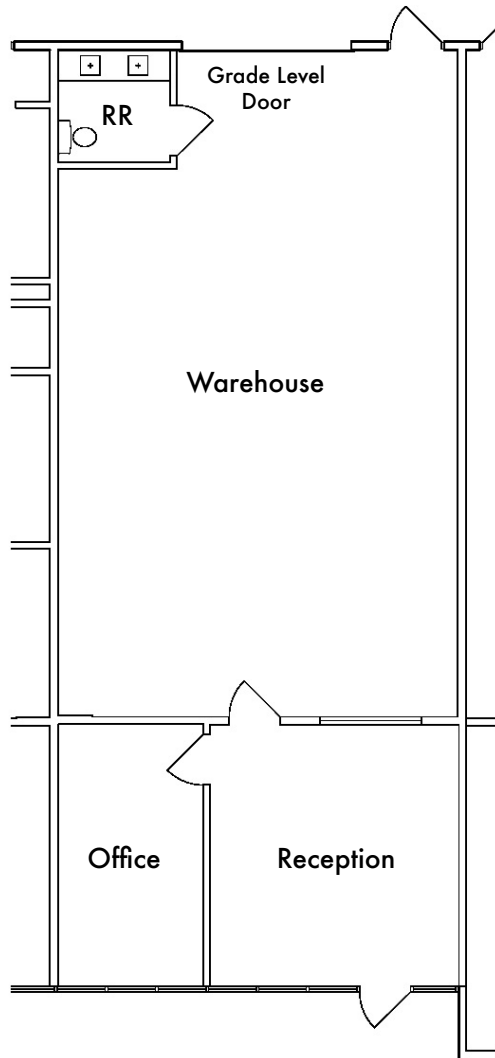
For more info contact: Whitney Robinson | whitney@rafpg.com | (858) 314-3116 ext. 107

No warranty or representation is made to the accuracy of the foregoing information. Terms of sale or lease and availability are subject to change or withdrawal without notice. Any of the foregoing information will need to be separately verified by the buyer or tenant.



1,068 - 2,517 SF FOR LEASE

4747 - 4751 Oceanside Blvd. & 1818 - 1820 Peacock Blvd.

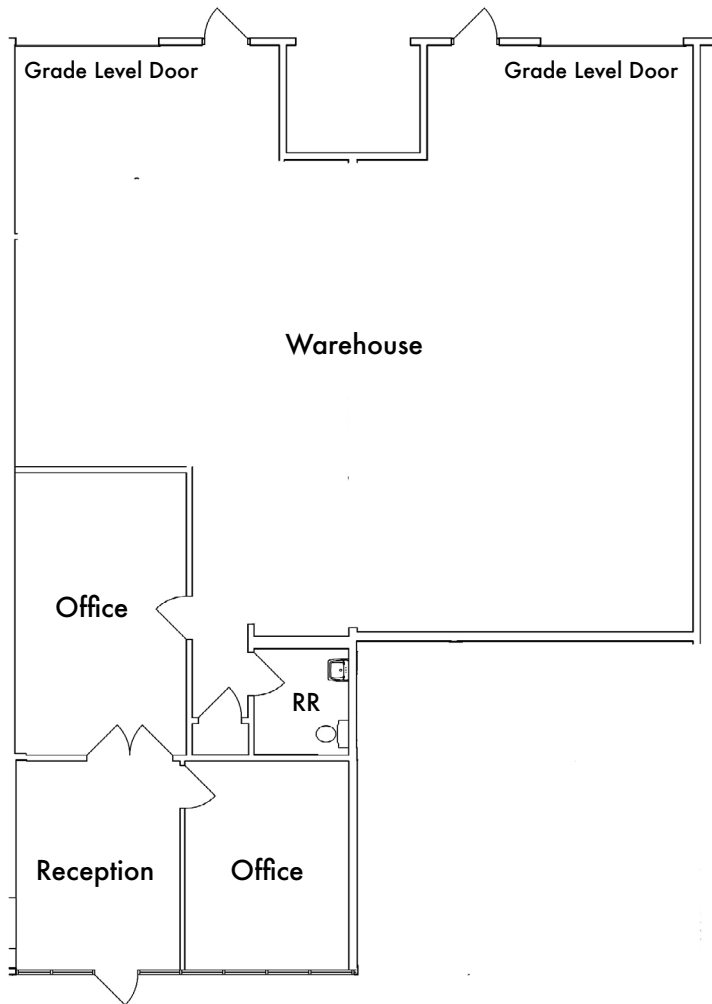


SUITE DESCRIPTION	
Building Address:	4747 Oceanside Blvd.
Suite:	G
Square Feet:	1,419 SF
Power:	TBD
Lease Rate:	\$1.40/SF + CAM (\$0.35/SF)
Comments:	Reception, Office, Restroom & Warehouse with 1 Grade Level Door
Availability:	9/1/2026



1,068 - 2,517 SF FOR LEASE

4747 - 4751 Oceanside Blvd. & 1818 - 1820 Peacock Blvd.



SUITE DESCRIPTION

Building Address: 4749 Oceanside Blvd.

Suite: C & D1

Square Feet: 2,517 SF

Lease Rate: \$1.40/SF + CAM (\$0.35/SF)

Power: 200 amps/208v

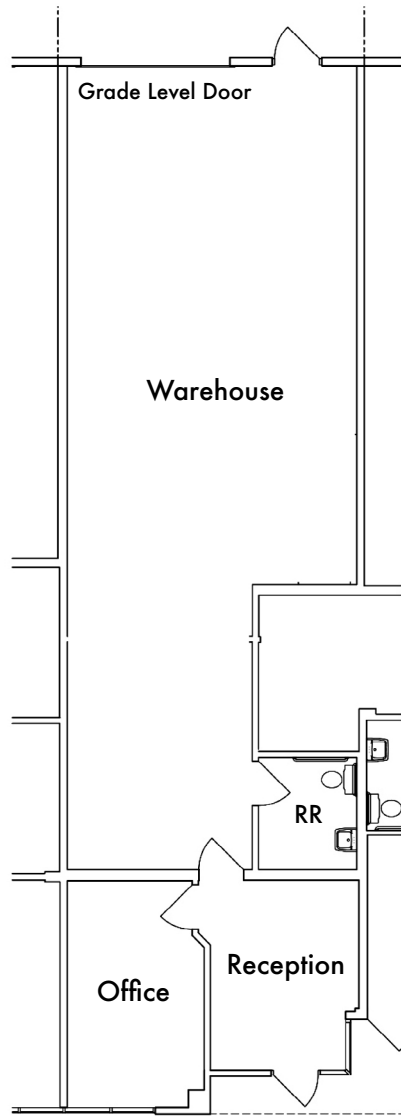
Comments: Reception, 2 Private Offices, Restroom and Warehouse with 2 Grade Level Doors

Availability: Now



1,068 - 2,517 SF FOR LEASE

4747 - 4751 Oceanside Blvd. & 1818 - 1820 Peacock Blvd.

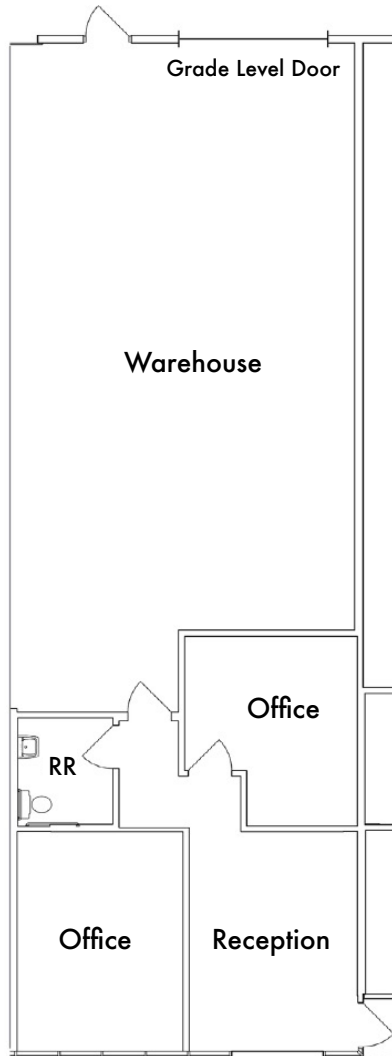


SUITE DESCRIPTION	
Building Address:	4751 Oceanside Blvd.
Suite:	D
Square Feet:	1,697 SF
Lease Rate:	\$1.40/SF + CAM (\$0.35/SF)
Power:	100 amps
Comments:	Reception, 1 Private Office, Restroom and Warehouse with 1 Grade Level Door
Availability:	Now



1,068 - 2,517 SF FOR LEASE

4747 - 4751 Oceanside Blvd. & 1818 - 1820 Peacock Blvd.

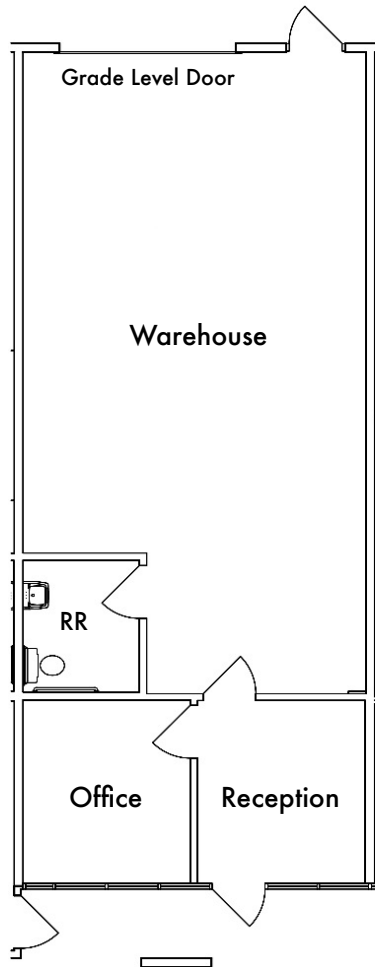


SUITE DESCRIPTION	
Building Address:	4751 Oceanside Blvd.
Suite:	G
Square Feet:	1,847 SF
Lease Rate:	\$1.40/SF + CAM (\$0.35/SF)
Power:	100 amps
Comments:	Reception, 2 Private Offices, Restroom and Warehouse with 1 Grade Level Door
Availability:	Now



1,068 - 2,517 SF FOR LEASE

4747 - 4751 Oceanside Blvd. & 1818 - 1820 Peacock Blvd.



SUITE DESCRIPTION	
Building Address:	1820 Peacock Blvd.
Suite:	D
Square Feet:	1,068 SF
Lease Rate:	\$1.40/SF + CAM (\$0.35/SF)
Power:	TBD
Comments:	Reception, Office, Restroom & Warehouse with 1 Grade Level Door
Availability:	11/1/2026



1,068 - 2,517 SF FOR LEASE

4747 - 4751 Oceanside Blvd. & 1818 - 1820 Peacock Blvd.

AERIALS



For more info contact: Whitney Robinson | whitney@rafpg.com | (858) 314-3116 ext. 107

No warranty or representation is made to the accuracy of the foregoing information. Terms of sale or lease and availability are subject to change or withdrawal without notice. Any of the foregoing information will need to be separately verified by the buyer or tenant.