

1,600 SF - 3,300 SF DIVISIBLE | 2ND GENERATION RESTAURANT SPACE AVAILABLE



10020-10036

— Venice Blvd, Culver City, California —

PROPERTY DETAILS



861 SF – 3,300 SF Available



On-Site Parking



Turn-Key 2nd Generation Restaurant Opportunity



High Visibility from Heavily Trafficked Venice Blvd in Culver City



±51,536 VPD



Walker's Paradise (97)

1,600 SF- 3,300 SF DIVISIBLE | 2ND GENERATION RESTAURANT SPACE AVAILABLE



10020-10036 Venice Blvd, Culver City, California

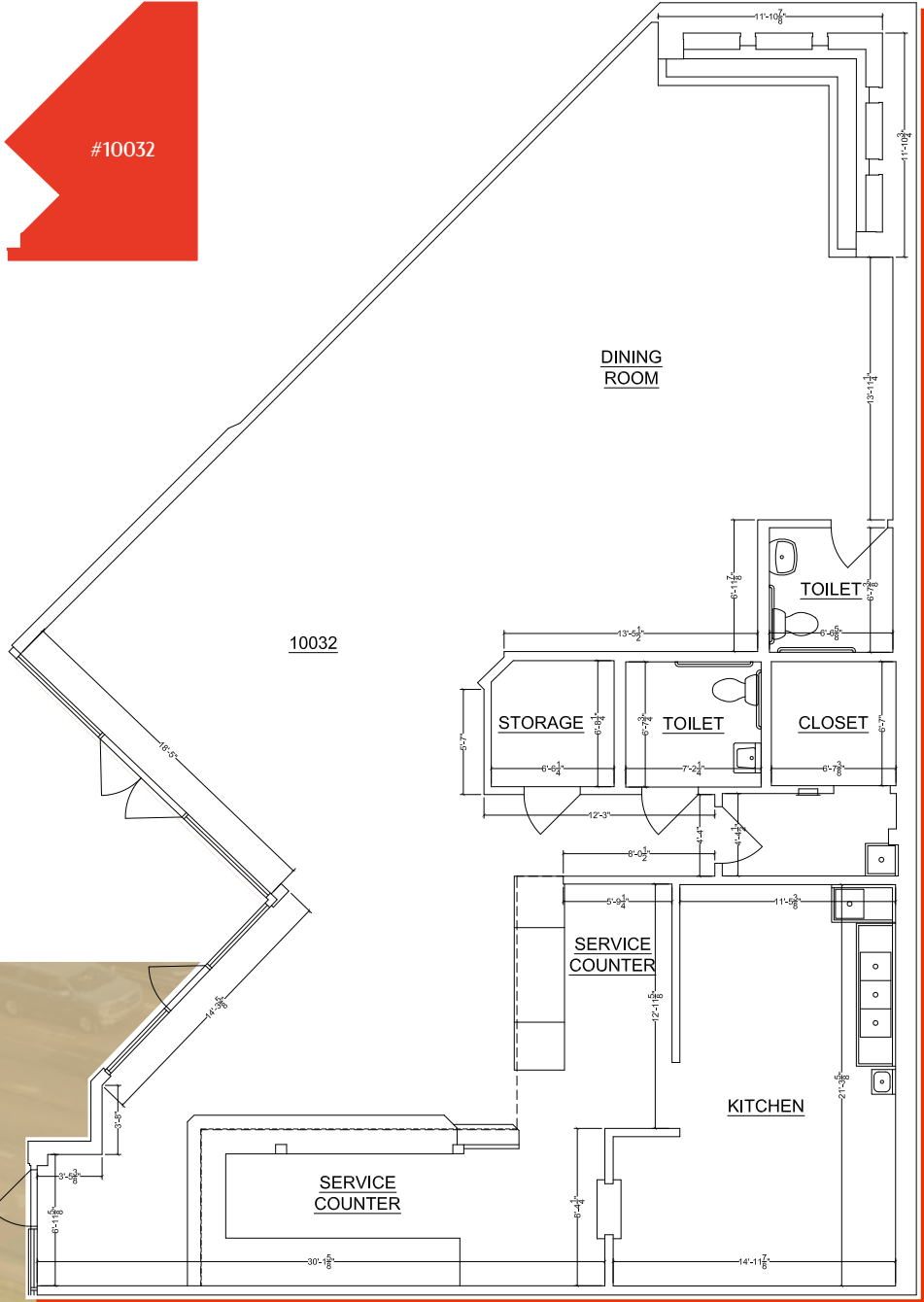
SITE PLAN

VENICE BLVD

CLARINGTON AVE



FLOOR PLAN




1,600-3,300 SF Divisible
2nd Generation Restaurant
Space Available

10020-10036

— Venice Blvd, Culver City, California —

LOCATION HIGHLIGHTS





Los Angeles HQ


Ivy Station


The Platform
technicolor sweetgreen
Reformation SOLCYCLE

CUMULUS

Hayden Tract


smashbox ANAVIL

CULVER CITY EXPO LINE

CULVER CITY EXPO LINE

SONY PICTURES
ANIMATION

Culver Steps


CULVER
STORIES

Culver Studios


One Culver

EQUINOX


SONY
PICTURES

DEMOGRAPHICS

Culver City has become a prime destination for work, dining, shopping, and entertainment, attracting a desirable demographic of affluent, young, active and highly educated people. Downtown Culver City offers charming outdoor cafes, unique shops, art galleries, creative offices, and vibrant nightlife, all surrounded by tree-lined boulevards and stunning architecture.

The city's centrality, growing retail options, and efficient transportation make it an attractive place to live, work, and play. The new creative retail hub, Platform, located just 10 minutes from Jefferson Triangle, offers a range of dining and retail options such as Blue Bottle Coffee, Aesop, and Soulcycle.

Culver City's location on the Expo Line makes it easy to reach destinations like Santa Monica, Hollywood, Pasadena, and beyond. With its small-town charm and big-city conveniences, Culver City is truly a vibrant, growing city.



	1 mile	3 miles	5 miles
Population	50 K	279 K	810 K
Median Age	40	41	40
Employees	32 K	194 K	668 K
HH Income	\$107 K	\$120 K	\$119 K

Culver City

— California 90230 —

FLOOR PLAN



- IVY STATION**
CULVER CITY
- Equator Coffees
 - Healthspot
 - Los Angeles Ale Works
 - Love.Life
 - Mayweather
 - Boxing + Fitness
 - milk + honey
 - [solidcore]
 - StretchLab
 - Sweetfin
 - YogaSix

- HELMS BAKERY DISTRICT**
- AFURI Ramen & Dumpling
 - Corepower Yoga
 - Erewhon
 - Formula Fig
 - Mendocino Farms
 - Philz Coffee
 - Pop's Bagels
 - Salt & Straw
 - Sephora
 - Yunomi Handroll

- Retail
- Eateries
- Fitness
- Hotel

- Platform**
- Aesop
 - Atrio
 - Bianca
 - Blue Bottle Coffee
 - Boba Guys
 - Broome St. General
 - Catbird
 - Club Vintage
 - Faraway
 - Goodee
 - Guild
 - il Buco Vita
 - Janessa Leoné
 - Juliet
 - Loqui
 - Margot
 - Milk Teeth
 - Mojave Flea
 - Reformation
 - Res Ipsa
 - Roberta's
 - Sweetgreen
 - Teller
 - The Optimist
 - Van Leeuwen
 - Wyeth

- THE CULVER STEPS**
- Coco Republic
 - Father's Office
 - Harbour Outdoor
 - H.D. Buttercup
 - Helms Bakery
 - Lukshon
 - Lustig
 - Pasta Sisters
 - Rejuvenation
 - Room & Board
 - Scandinavian Designs

10020-10036
— Venice Blvd, Culver City, California —



10020-10036

— Venice Blvd, Culver City, California —

FOR MORE INFORMATION, PLEASE CONTACT

Sam Aaron

Vice President

Lic. 01828428

+1 310 550 2571

sam.aaron@cbre.com

Jamie Brooks

Senior Vice President

Lic. 01434718

+1 310 550 2631

jamie.brooks@cbre.com

CBRE

© 2026 CBRE, Inc. All rights reserved. This information has been obtained from reliable sources but has not been verified for accuracy or completeness. CBRE, Inc. makes no guarantee, representation, or warranty and accepts no responsibility or liability for the accuracy, completeness, or reliability of the information contained herein. You should conduct a careful, independent investigation of the property and verify all information. Any reliance on this information is solely at your own risk. CBRE and the CBRE logo are service marks of CBRE, Inc. All other marks displayed on this document are the property of their respective owners, and the use of such marks does not imply any affiliation with or endorsement of CBRE. Photos herein are the property of their respective owners. Use of these images without the express written consent of the owner is prohibited.