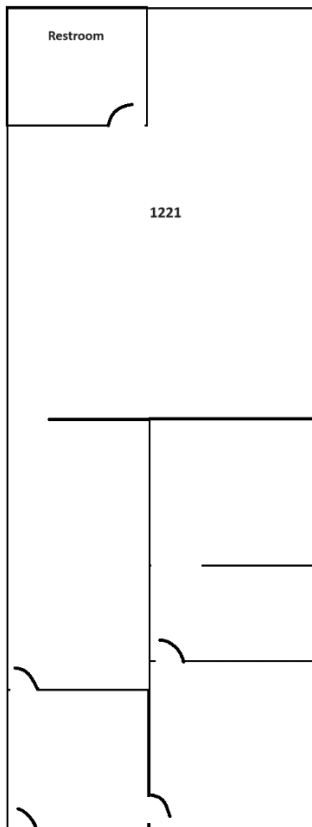


AVAILABLE

FORMER TAX PREP & REAL ESTATE, SUITE 1221



entrance to the building

- **Suite 1221:** Former Real Estate, Tax Prep location, custom built Three offices and Open space, Tile flooring, sink and bathroom. Currently approximately **1,289 square feet.** huge monument sign
- Excellent street visibility on high traffic 17th street, major street with Approx. 300,000 cars per day traffic.
- A very busy daytime population and activity

Contact: Sima Shidfar, MSIE
t. (818)232-2299
m. (818)262-8044
Sima@TWSRealty.com

This information has been secured from sources we believe to be reliable, but we make no representations or warranties, expressed or implied, as to the accuracy of the information. References to square footage or age are approximate. Tenant must verify the information and bears all risk for any inaccuracies.



This information has been secured from sources we believe to be reliable, but we make no representations or warranties, expressed or implied, as to the accuracy of the information. References to square footage or age are approximate. Tenant must verify the information and bears all risk for any inaccuracies.