

337 Main Street
Norwich, CT 06360



Matt Byrnes-Jacobsen, AIA, LEED AP
(860) 705-0250 | Matt@HelmAD.com
30 Goodwin Street
Norwich, CT 06357

© 2023 HELM Architecture + Design, LLC (Matt Byrnes-Jacobsen, AIA)
The designs, ideas, and concepts contained within these drawings are protected under copyright law as the exclusive property of HELM Architecture + Design, LLC (Matt Byrnes-Jacobsen, AIA).
These drawings are property of the Architect and shall not be duplicated or used in part or whole for any other purpose without the prior written consent of the Architect.

STAMP:



PHASE:

BID SET

Revisions

No.	Date	Description
01	01/07/25	UPDATED BID SET

JOB #: 23004
DRAWN BY: Author
ISSUE DATE: 01/06/25

DRAWING NAME:
CODE INFORMATION & DIAGRAMS

SCALE: As indicated

SHEET:

G0.01

OCCUPANT LOAD TABLE			
OCCUPANCY CATEGORY	AREA	OCC. LOAD FACTOR	CALCULATED OCCUPANCY
EXISTING - LEVEL 1			
(B) BUSINESS	3,981 SF	150 SF	27
(S-2) PARKING	3,730 SF	200 SF	19
STOR./MECH.	321 SF	300 SF	3
UNOCCUPIED	8,771 SF	0 SF	0
	17,804 SF		49
EXISTING - LEVEL 2			
(A-2) ASSEMBLY	2,160 SF	15 SF	145
(B) BUSINESS	1,613 SF	150 SF	11
(R-2) RESIDENTIAL	3,340 SF	200 SF	17
STOR./MECH.	95 SF	300 SF	1
UNOCCUPIED	1,036 SF	0 SF	0
	8,243 SF		175
EXISTING - LEVEL 3			
(B) BUSINESS	3,429 SF	150 SF	23
(R-2) RESIDENTIAL	3,399 SF	200 SF	17
UNOCCUPIED	716 SF	0 SF	0
	7,545 SF		41
	33,592 SF		264

EGRESS TRAVEL DISTANCE	
PATH OF TRAVEL	DISTANCE
PATH A	122'-10"
PATH B	122'-10"

REFER TO ATTACHED CODE REPORT

CODE DIAGRAM LEGEND

--- 1 HR FIRE RATED WALL ASSEMBLY

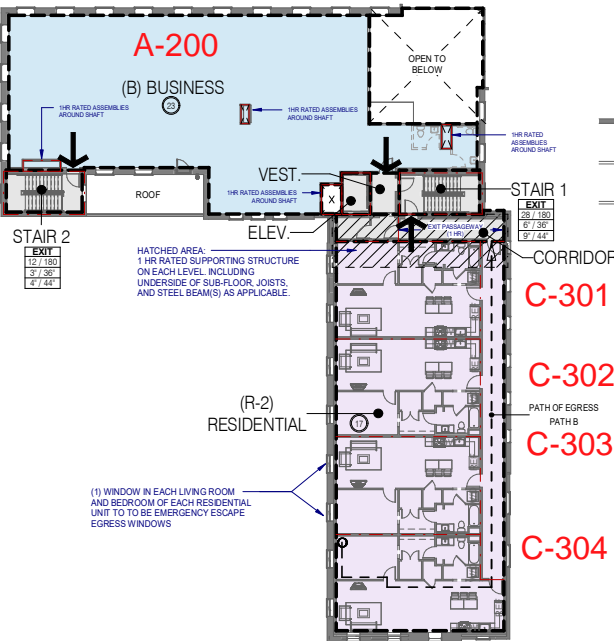
→ TRAVEL DISTANCE

EXIT ENTRY LOCATION

EXIT #X
XX / XX
XX' / XX"

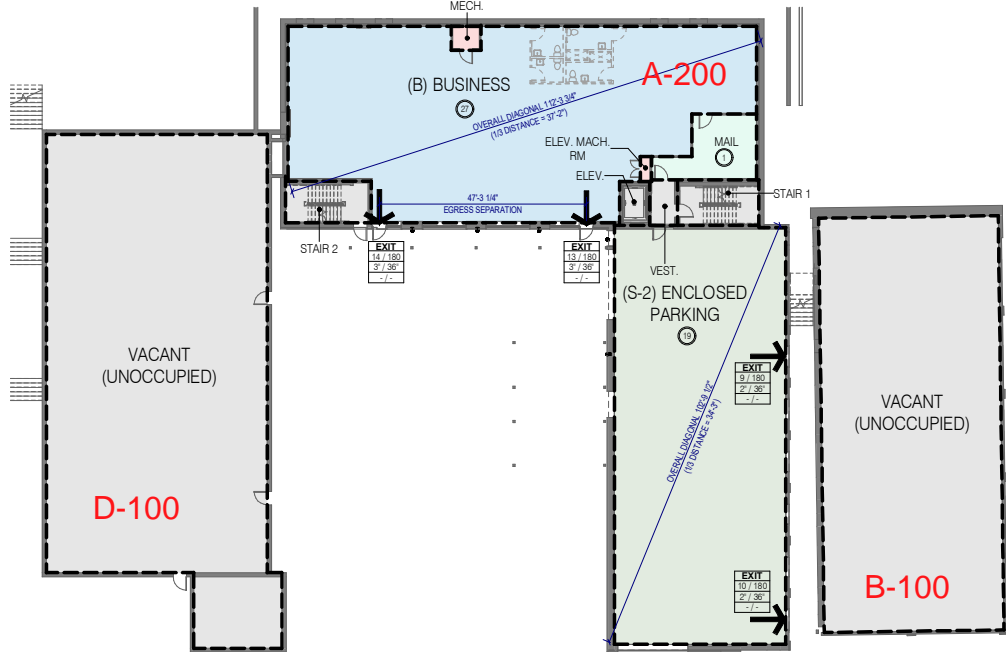
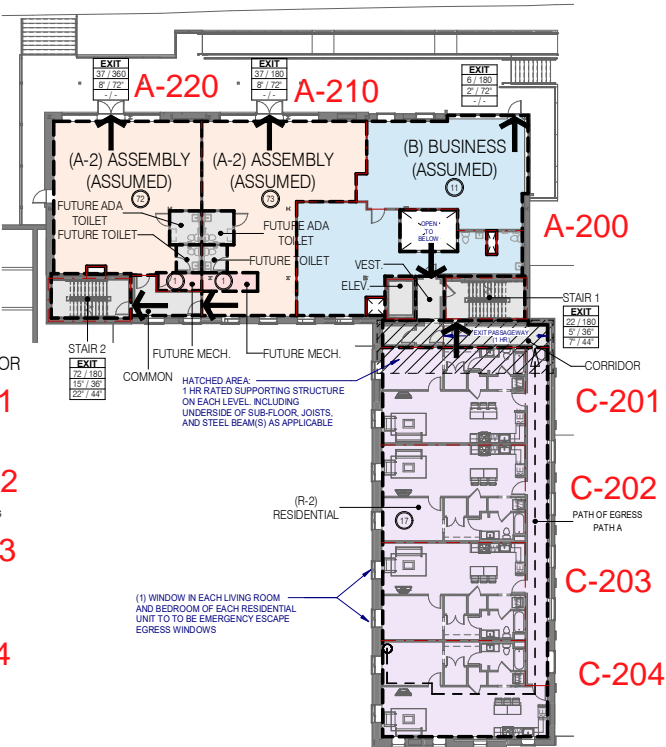
EXIT DESCRIPTION
OCCUPANTS: OCCUPANTS EXITING / OCCUPANT CAPACITY
DOOR WIDTH: REQUIRED WIDTH / PROVIDED WIDTH
STAIR WIDTH: REQUIRED WIDTH / PROVIDED WIDTH

FEG FIRE EXTINGUISHER AND HANGER

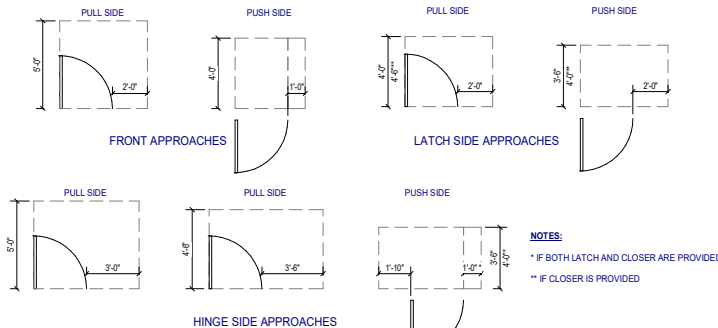


1 LEVEL 3 CODE DIAGRAM
1/16" = 1'-0"

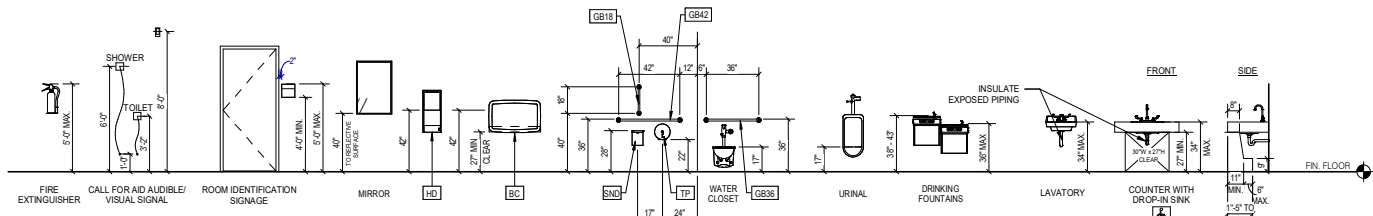
2 LEVEL 2 CODE DIAGRAM
1/16" = 1'-0"



3 LEVEL 1 CODE DIAGRAM
1/16" = 1'-0"



DOOR ADA CLEARANCES - COMM.



ADA MOUNTING HEIGHTS