

1515-1519 GRUNDY'S LANE

BRISTOL, PA | KEYSTONE INDUSTRIAL PARK

UP TO 13,500 SF
AVAILABLE FOR
IMMEDIATE OCCUPANCY



13,500 SF OFFICE
AVAILABLE FOR LEASE

UP TO 13,500 SF OFFICE SPACE

AVAILABLE FOR LEASE

PROPERTY HIGHLIGHTS

- 85,000 SF Office Building
- Up to 13,500 SF Available for Immediate Occupancy
- Twin tone architectural block masonry construction.
- Built out as 100% office
- 40'x40 Column Spacing
- Fully Heated and Air Conditioned
- 100% Sprinklered - Wet System
- 4.1/1,000 SF Parking
- 277/480-volt, three phase; 800 amp capacity
- I-95 Visibility

REPRESENTED BY
THE FLYNN COMPANY

PAT GILMORE, SIOR
PGILMORE@FLYNNCO.COM
215-561-6565 X 122

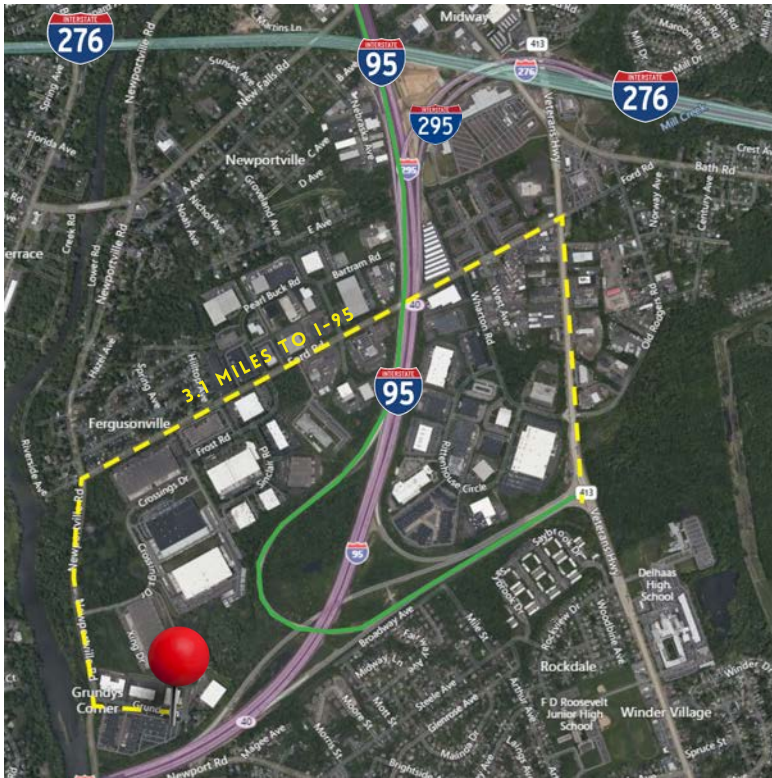
MICHAEL BORSKI, SR
MBORSKI@FLYNNCO.COM
215-561-6565 X 120

The
Flynn
Company

THE FLYNN COMPANY

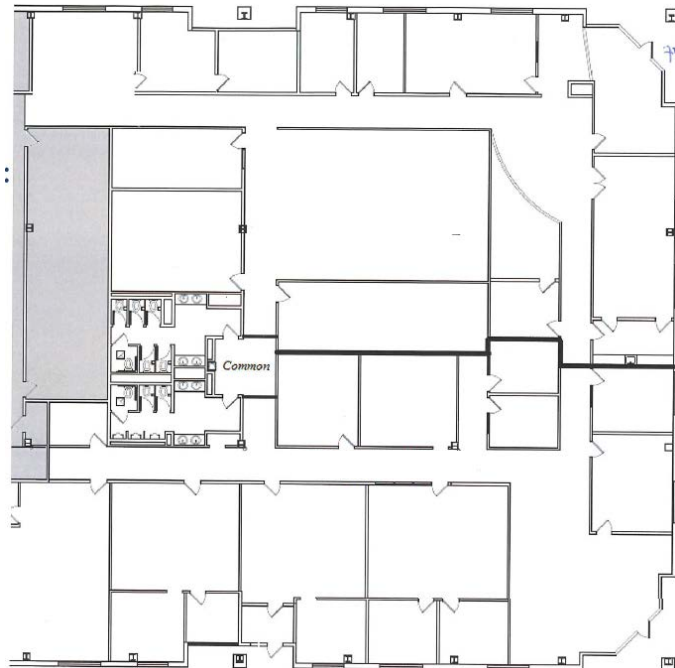
WWW.FLYNNCO.COM | 1621 WOOD STREET, PHILADELPHIA, PA 19103 | 215.561.6565

LOCATION



- Located in Keystone Industrial Park
- Conveniently located near the Route 413/Bristol Exit from I-95 with easy access to Route 1, PA Turnpike, and the NJ Turnpike
- 3 mile drive to I-95
- Close Proximity to nearby cities:
 - 25 Minutes: Center City, Philadelphia
 - 15 Minutes: Trenton, NJ
 - 25 Minutes: Princeton, NJ

FLOOR PLAN - 13,500 SF



**For More Information
Please Contact:**

PAT GILMORE, SIOR
PGILMORE@FLYNNCO.COM
215-561-6565 X 122

MICHAEL BORSKI, SR
MBORSKI@FLYNNCO.COM
215-561-6565 X 120