

London Oxford Airport
Office & Storage Space Availability
(*& who's where today*)

Version 37 - April 2025

Rental costs are indicative only



= Available Spaces

**Primary airport buildings
with available spaces in
them today**



'Yorkon' Building

'Cherwell' Buildings

Building No.15
(MCC 'simulator' building)

Hangar No.15 offices

Hangars 6 & 7

Hangar 10

Hangar 5

Hangar 8



Cherwell & Yorkon Office Blocks

*ex-OAA/CAE pilot training
college buildings No.s 27-30**

(Landside)

 = available space

* Was the main pilot training college campus building for 40+ years
but handed back to airport by CAE in late 2021

Cherwell A
Block (Central)

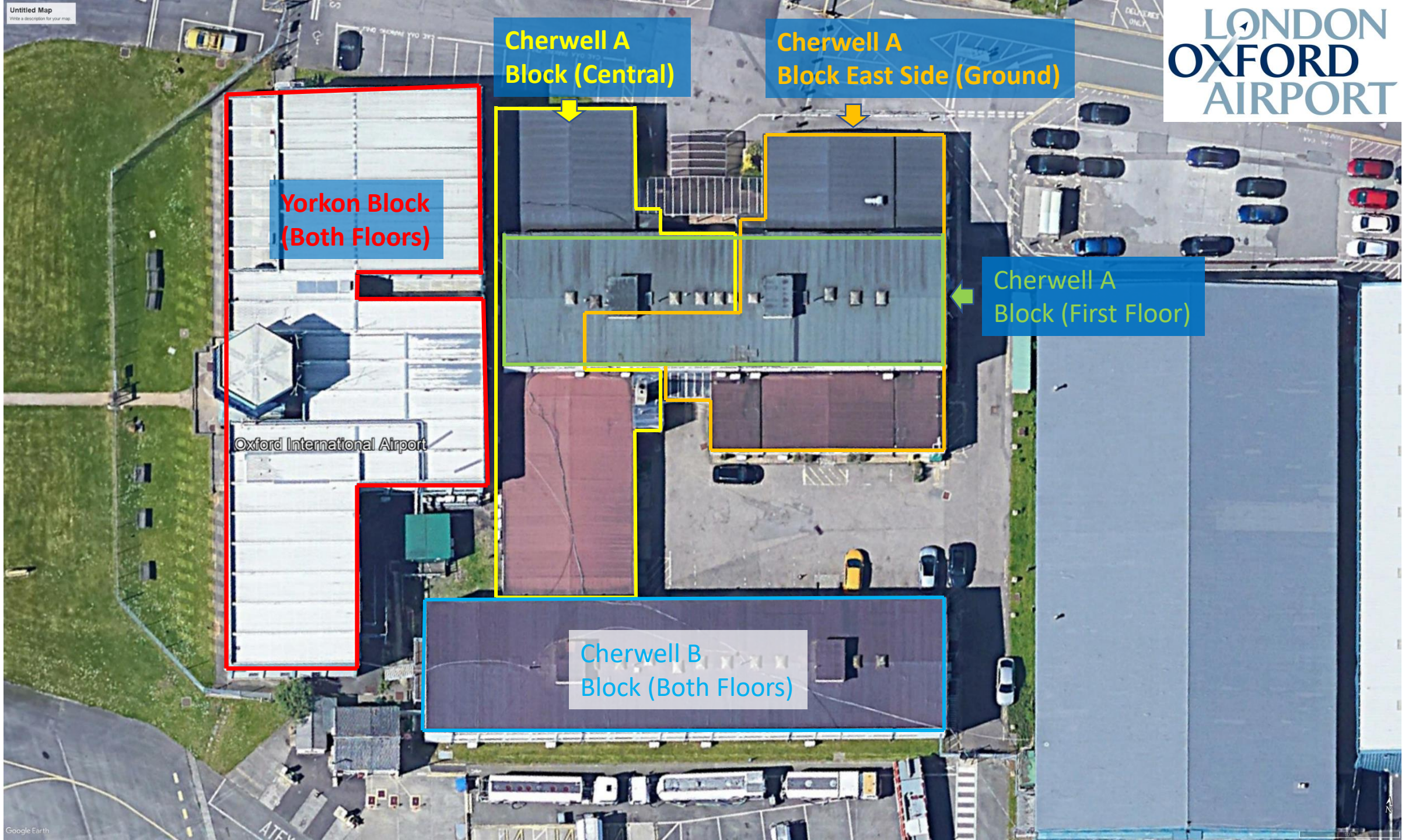
Cherwell A
Block East Side (Ground)

Yorkon Block
(Both Floors)

Cherwell A
Block (First Floor)

Oxford International Airport

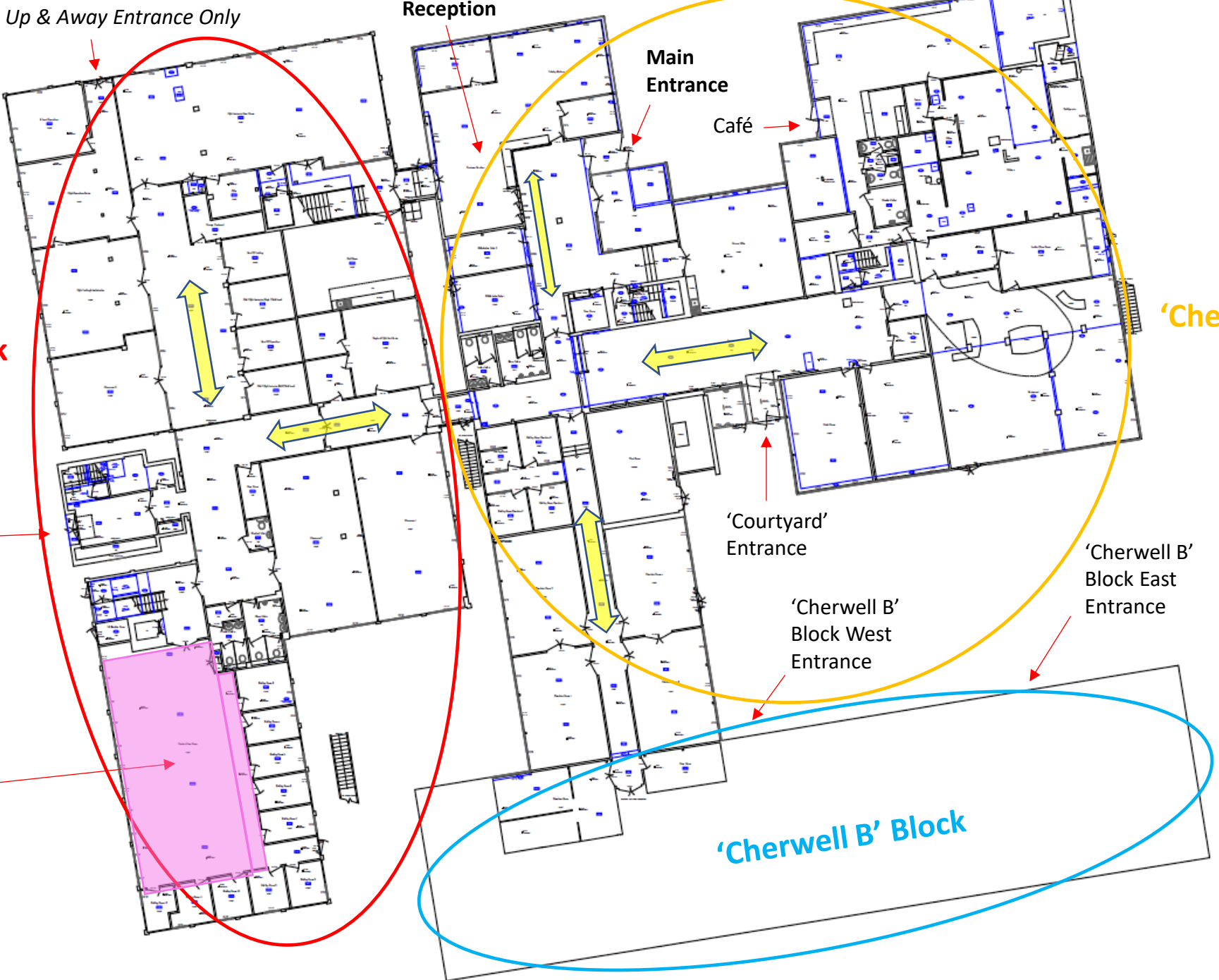
Cherwell B
Block (Both Floors)





Main Yorkon Building (foreground) and Cherwell Blocks (to the rear)

Whole
Ground
Floor



'Yorkkon' Block

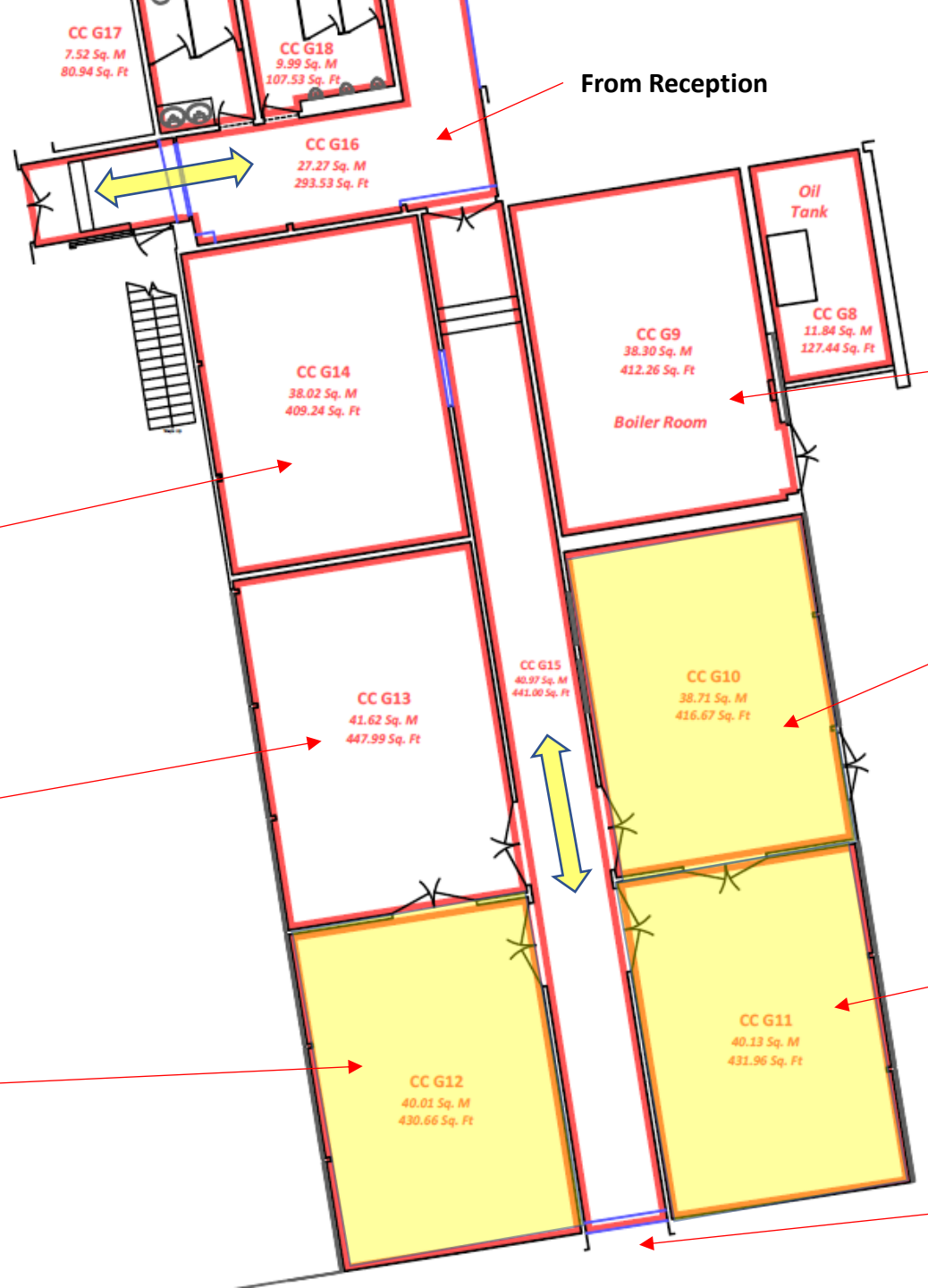
'Cherwell A' Block

Control
Tower -
West Side
Entrance

PFT &
Livingstone
Skies 'Flight
Club' Member
& GA Lounge

'Cherwell B' Block

**Cherwell A
'Central'
Ground Floor
South End**



CC G9 – old oil-fired boiler room, needs decommissioning, storage only - not available today, but could be

Available now
(CC G10 – 417 sq.ft.)
£799+VAT/month all-inclusive

Available now
(CC G11 – 432 sq.ft.)
£828+VAT/month all-inclusive

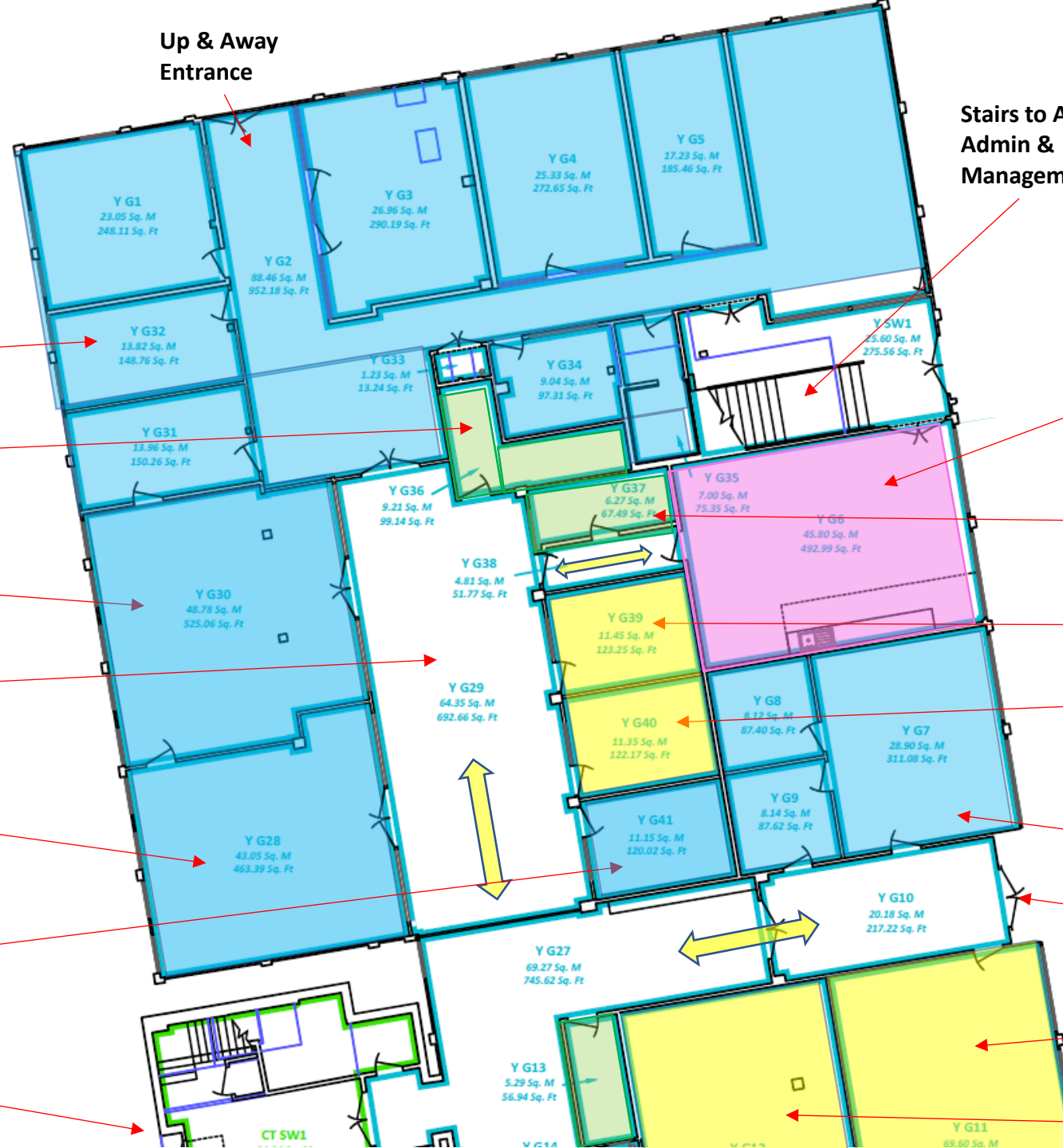
**Volare Aviation
(Record Stores No.1)
CC G14**

**Volare Aviation
(Record Stores No.2)
CC G13 – 448 sq.ft.**

**Available now
(Offices or Stores)
CC G12 - £825+VAT/month
all-inclusive**

To Cherwell B Block

**Yorkon Block
Ground Floor
North Side**



Up & Away
Entrance

Stairs to Airport
Admin &
Management

Stores (Y G13, Y G36, Y G37)
All now allocated

Up & Away Aviation

GA Lounge & Shared
Tenant Staff Kitchen
& Rest Room

Up & Away Aviation
Store/Server Room
(Y G36)

Security/RJA Archive
(Y G37)

Y G30 – 525 sq.ft.
Up & Away Aviation

Was SaxonAir - **Now Available**
(Y G39 – 123 sq.ft.)
£235.75+VAT/month all-incl.

GA Terminal Hall

Was PAL-V- **available from March
2025** (Y G40) £234.16+VAT/month

(Y G28) – 463 sq.ft.
Cirrus Aircraft (was GA
Lounge)

Volare Aviation Cabin Crew
Office & Stores
(Y G7, Y G8 & Y G9)

Premier Cars
(Y G41)

To Reception

Control Tower West-
Side Entrance

'Exam Hall' – currently BF
LED (Y G11 only) – 749
sq.ft.

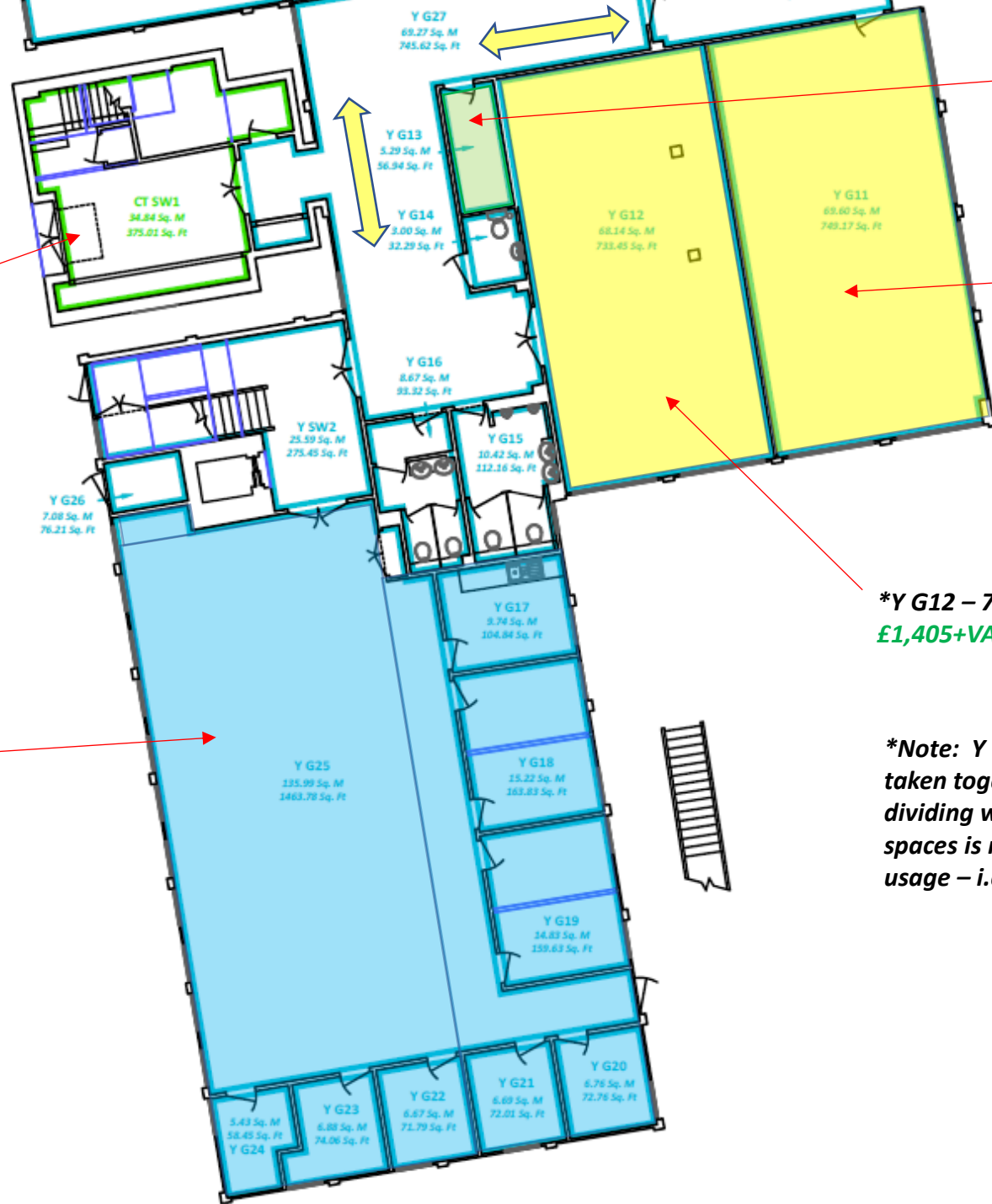
Y G12 – BF-LED

Room ID	Area (Sq. M)	Area (Sq. Ft.)
Y G1	23.05	248.11
Y G2	88.46	952.18
Y G3	26.96	290.19
Y G4	25.33	272.65
Y G5	17.23	185.46
Y G6	45.80	492.99
Y G7	28.90	311.08
Y G8	8.12	87.40
Y G9	8.14	87.62
Y G10	20.18	217.22
Y G11	69.60	749
Y G12	69.60	749
Y G13	5.29	56.94
Y G14	-	-
Y G28	43.05	463.39
Y G29	64.35	692.66
Y G30	48.78	525.06
Y G31	13.96	150.26
Y G32	13.82	148.76
Y G33	1.23	13.24
Y G34	9.04	97.31
Y G35	7.00	75.35
Y G36	9.21	99.14
Y G37	6.27	67.49
Y G38	4.81	51.77
Y G39	11.45	123.25
Y G40	11.35	122.17
Y G41	11.15	120.02
Y G27	69.27	745.62
Y SW1	25.60	275.56
CT SW1	-	-

Yorkon Block Ground Floor South Side

Control Tower West-Side Entrance

Pilot Flight Training (PFT) & Livingstone Skies
&
'Flight Club' member lounge



Y G13 Cleaner's Store

*Old CAE/OAA 'Exam Hall' (Y G11) – 749 sq.ft. divided by partition wall

Now vacated
£1,436+VAT/month all-inclusive

*Y G12 – 733 sq.ft. Now Available (ex-BF-LED)
£1,405+VAT/month all-inclusive

*Note: Y G11 and Y G12 are best taken together as the removable dividing wall between the two spaces is not ideal for separate usage – i.e. sound and privacy

**Yorkon Block
First Floor
North Side**



Oxford Airport
Management &
Administration

ATC/Airport Training &
Board Room (Y F10)

NATS Office (Y F11)

ATC Office
and Rest
Area
(Y F25)

Available to Rent/Lease
(Y F13) – 574 sq.ft. -
£1,101+VAT/month all-inclusive
(ready to go – refurbished)

Available to Rent/Lease
(Y F12) – 503 sq.ft. –
£965+VAT/month all-inclusive
*(Needs paint and carpet clean –
1 week)*

Y F1
23.41 Sq. M
251.98 Sq. Ft

Y F2
12.63 Sq. M
135.95 Sq. Ft

Y F3
8.52 Sq. M
91.71 Sq. Ft

Y F4
12.16 Sq. M
130.89 Sq. Ft

Y F5
13.51 Sq. M
145.42 Sq. Ft

Y F6
9.11 Sq. M
98.06 Sq. Ft

Y F29
44.36 Sq. M
477.49 Sq. Ft

Y F7
14.24 Sq. M
153.28 Sq. Ft

Y F31
3.68 Sq. M
39.61 Sq. Ft

Y F8
5.82 Sq. M
62.65 Sq. Ft

Y F27
16.94 Sq. M
182.34 Sq. Ft

Y SW1
24.70 Sq. M
265.87 Sq. Ft

Y F9
3.86 Sq. M
41.55 Sq. Ft

Y F32
10.98 Sq. M
118.19 Sq. Ft

Y F10
70.92 Sq. M
763.38 Sq. Ft

Y F26
31.05 Sq. M
334.22 Sq. Ft

Y F28
23.95 Sq. M
257.80 Sq. Ft

Y F11
5.19 Sq. M
55.86 Sq. Ft

Y F25
49.66 Sq. M
534.54 Sq. Ft

Y F12
46.78 Sq. M
503.54 Sq. Ft

Y F13
53.35 Sq. M
574.25 Sq. Ft

Y F24
46.41 Sq. M
499.55 Sq. Ft

Y F15
11.70 Sq. M
125.94 Sq. Ft

**Yorkon Block
First Floor
South Side**

Control Tower

**TUI Airline Training
(March 24)
(Y F20 – Y F23)
Total Zone = 2,383 sq.ft.**



**Volare Aviation
Training Rooms (now split
into two meeting rooms /
offices) (Y F14) 677 sq.ft.**

NATS Store

**Pilot Flight Training &
Livingstone Skies
Training Room (Y F16)
*Could be available from
March 2025 – would be
£1,146.67+VAT/month
all-inclusive***

**Cherwell A
Ground Floor
East Side**

*Was Go-Fly-Oxford
CA G10 - 404 sq.ft.
Now available March 25
£774.45+VAT/month all-incl.*

Café Entrance

Café (Aviation Station)
& The Menu Guru
(Inflight and Hospitality
Catering)

Kitchen
Deliveries/Entrance

Kitchen

Kitchen stores

Old Restaurant & Event
Catering Zone
CA G7 1,691 sq.ft.
*Available to Rent/Lease –
can be surrendered by the
Café with one or two
months' notice. Needs
catering units removed
and new floor covering +
sub-dividing
£3,241+VAT/month all-
inclusive*

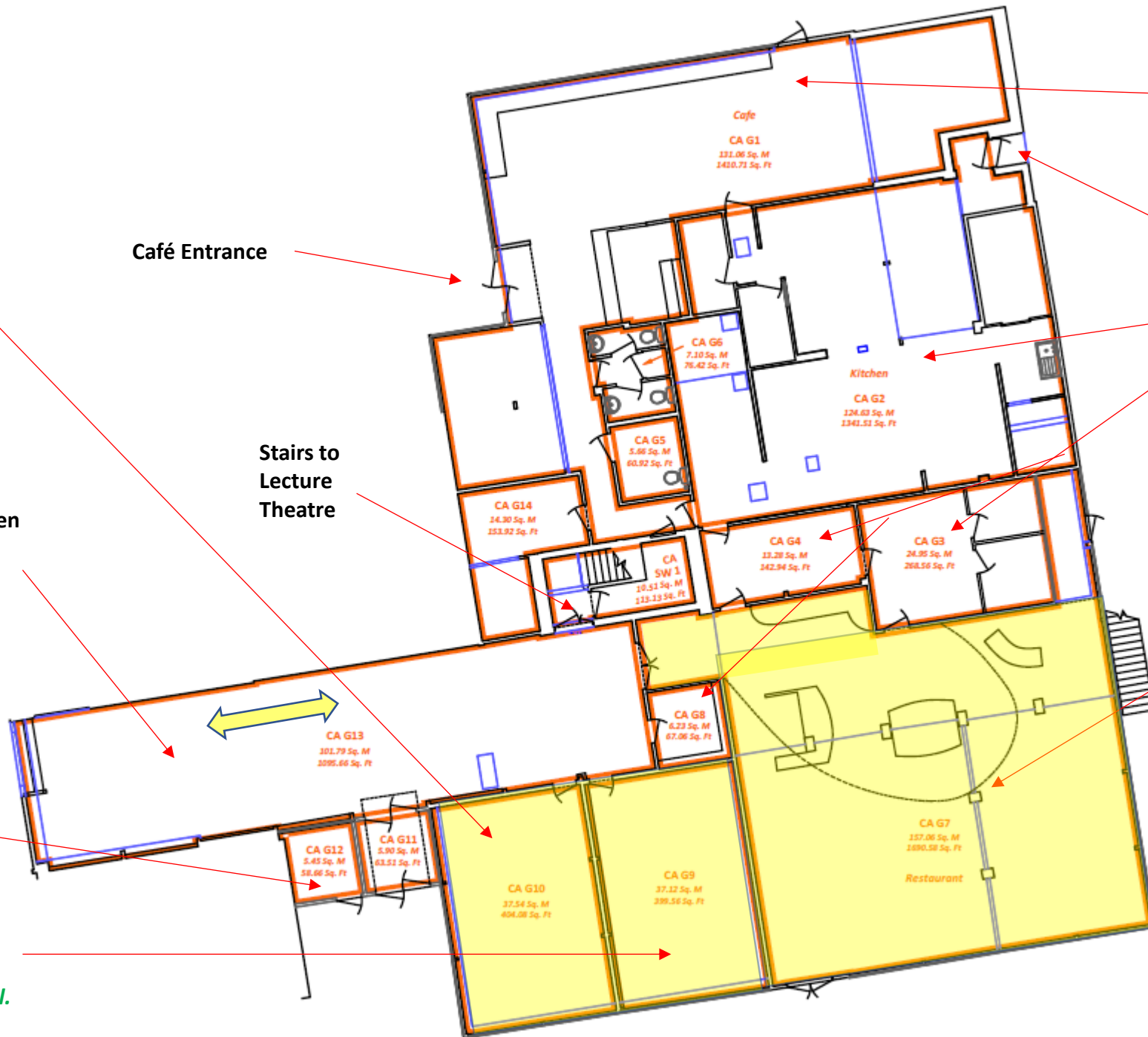
Event Hall (used often
with lecture theatre
upstairs)

Stairs to
Lecture
Theatre

To
Reception

Store for Euclid Aero
CA G12 – 58 sq.ft.

*Was Go-Fly-Oxford
CA G9 - 400 sq.ft.
Now available March 25
£765.82+VAT/month all-incl.*



Cherwell A First Floor

Volanteus Limited
(CA F3) from March 25

Mr Alex Darrell
(CA F5 & CA F6)

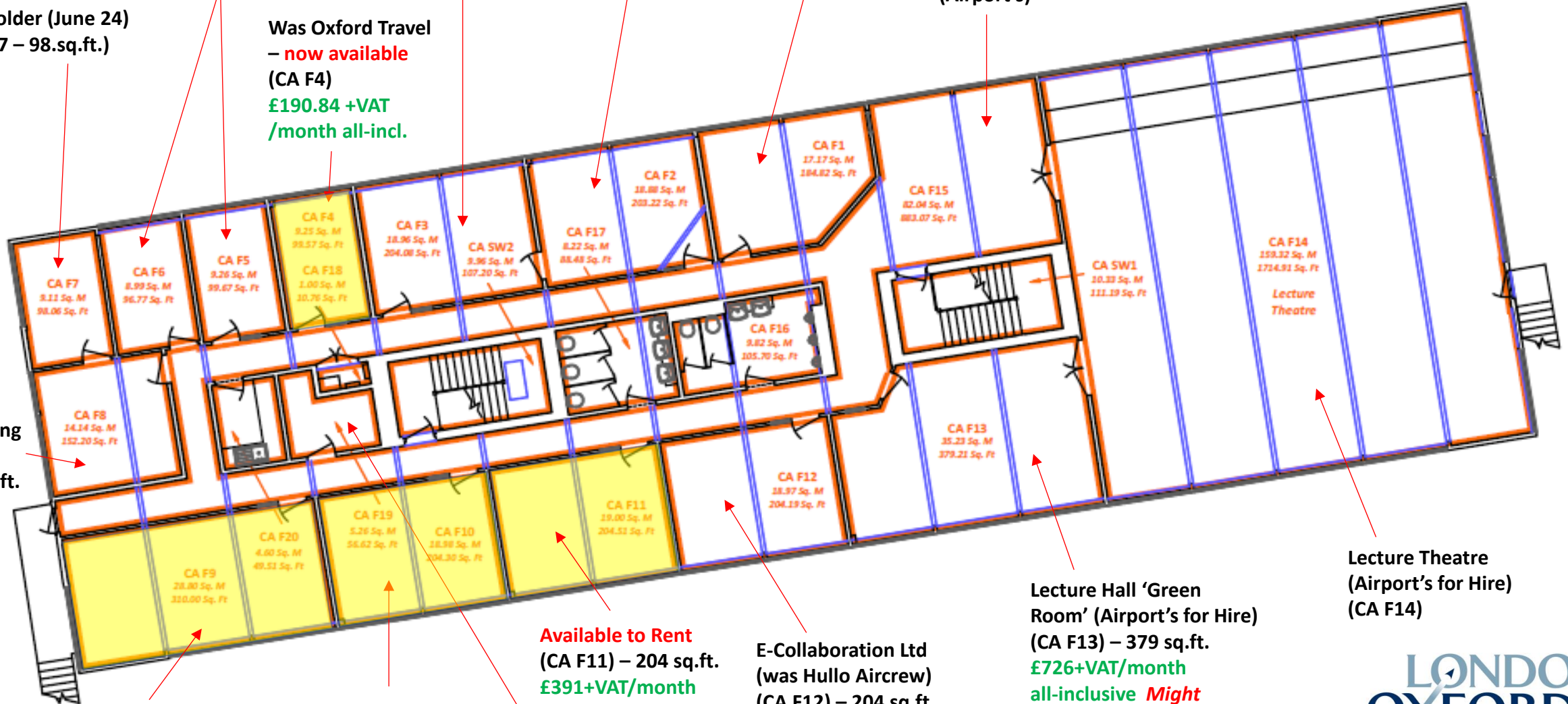
Elevate Air Ltd
(CA F2)

Textron Aircraft
Sales (CA F1)

Lecture Theatre
Reception
(Airport's)

Dr. Golder (June 24)
(CA F7 – 98.sq.ft.)

Was Oxford Travel
– now available
(CA F4)
£190.84 +VAT
/month all-incl.



Available to Rent
(CA F9) – 310 sq.ft. -
£594+VAT all-inclusive

Available to Rent
(CA F10) – 204 sq.ft.
£391+VAT/month

Available to Rent
(CA F11) – 204 sq.ft.
£391+VAT/month
Hullo Aircrew Store
(CA F19) – 57 sq.ft.

E-Collaboration Ltd
(was Hullo Aircrew)
(CA F12) – 204 sq.ft.

Lecture Hall 'Green
Room' (Airport's for Hire)
(CA F13) – 379 sq.ft.
£726+VAT/month
all-inclusive *Might
consider renting only
when most other office
space is sold*

Lecture Theatre
(Airport's for Hire)
(CA F14)

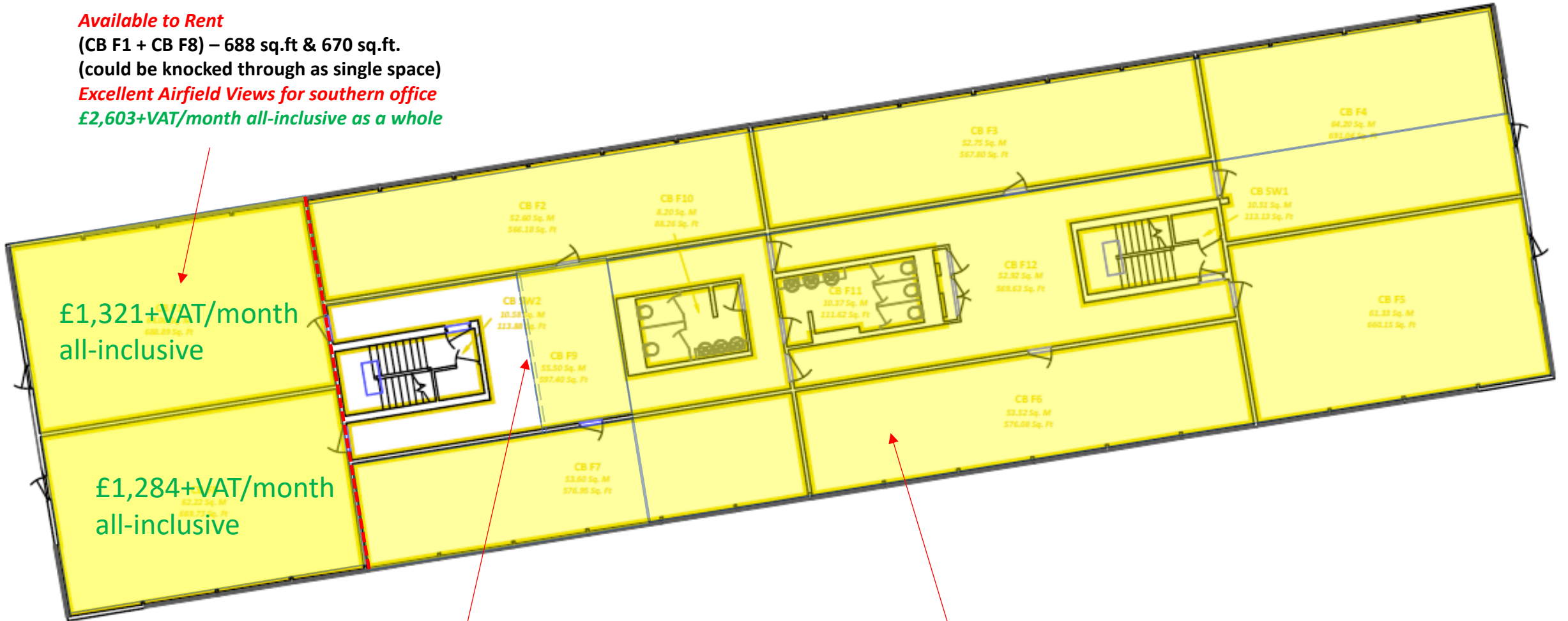
Cherwell B First Floor

Note: Entire Floor Upstairs now available from September 2024
£8,809+VAT / month all-inclusive (4,596 sq.ft. net lettable)

Available to Rent

(CB F1 + CB F8) – 688 sq.ft & 670 sq.ft.
(could be knocked through as single space)

Excellent Airfield Views for southern office
£2,603+VAT/month all-inclusive as a whole



£1,321+VAT/month
all-inclusive

£1,284+VAT/month
all-inclusive

New wall segregating Airbus
Zone from CB F1 & CB F8

Whole zone shown (excl. CB F1 + CB F8) Net Lettable =
3,238 sq.ft. - £6,206+VAT / month all-inclusive

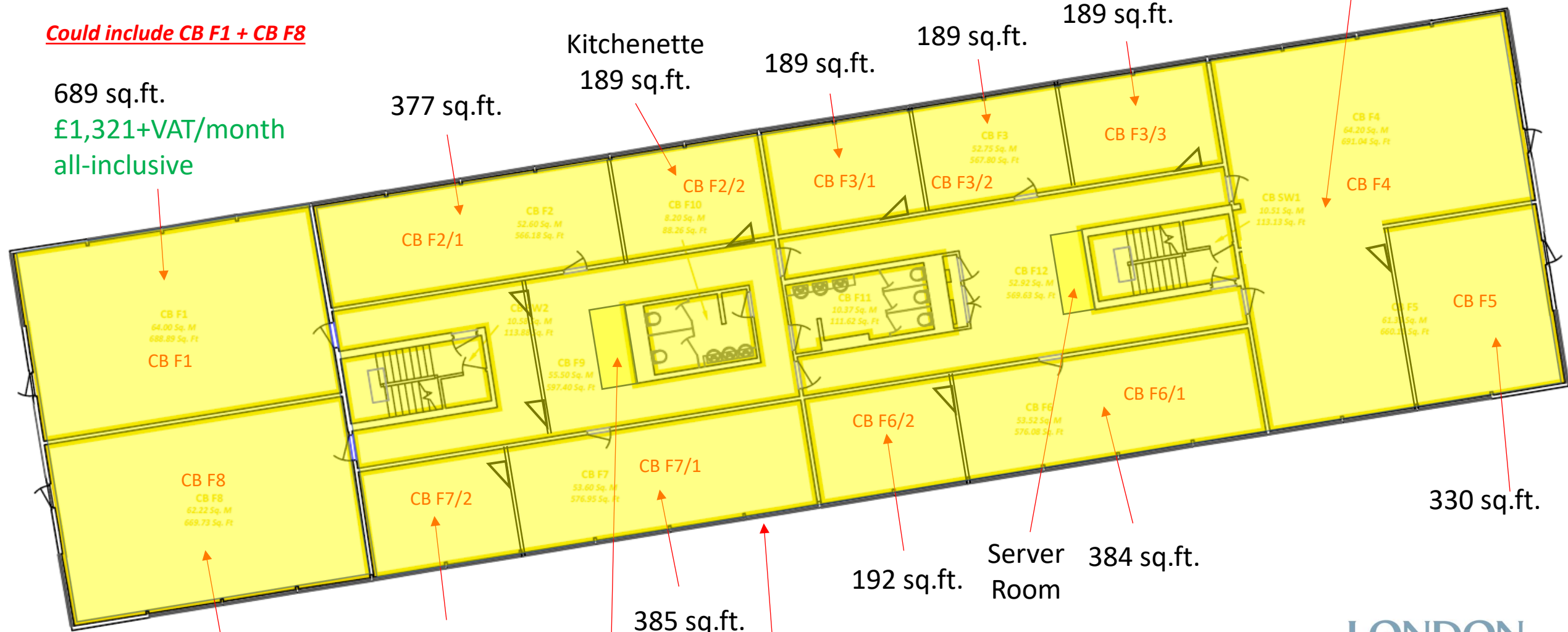
Cherwell B Block First Floor

Entire floor (4,597 sq.ft. net lettable) now available from September 2024

Could include CB F1 + CB F8

689 sq.ft.
£1,321+VAT/month
all-inclusive

1,021 sq.ft. (L-shaped)



670 sq.ft.
£1,284+VAT/month
all-inclusive

Shower Pod

Whole zone shown (excl. CB F1 + CB F8) Net Lettable = 3,238 sq.ft. - £6,206+VAT / month all-inclusive

Cherwell B Ground Floor

Current Terminal/FBO storage, but can be released any time (CB G2) – 422 sq.ft. **£809/month – all-inclusive**

Available January 2025 (CB G4 - storage only, *no windows*) - 147 sq.ft. **£200+VAT/month all-inclusive**

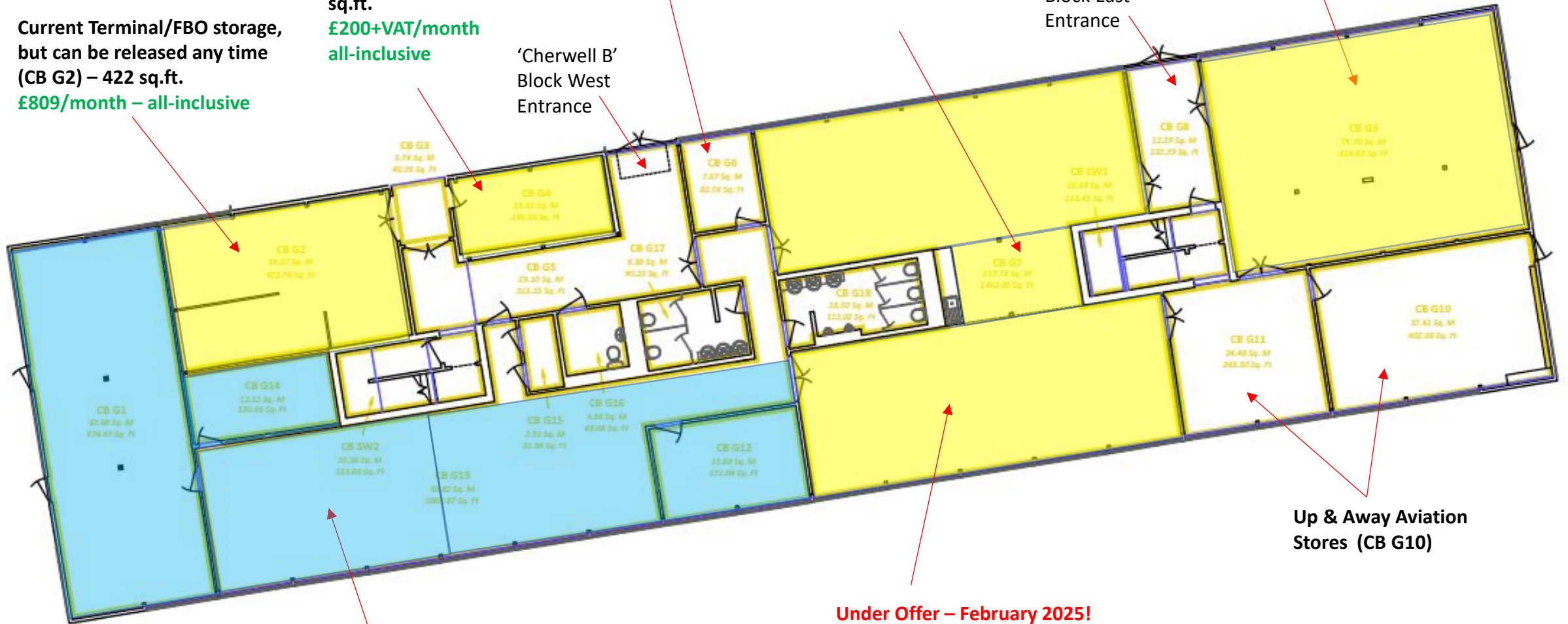
Dr Neil Golder (CB G6) – 83 sq.ft.

(CB G7) **Under Offer Feb 2025** – 1,483 sq.ft. (store space) **£2,842+VAT / month - all-inclusive**

now available from 1st November 2024 (CB G9) – 815 sq.ft. (workshop/store) **£1,200+VAT / month – all-inclusive**

'Cherwell B' Block West Entrance

'Cherwell B' Block East Entrance



Airport Handling (CB G1, CB G13, CB G14, CBG12 need to be taken together) – 2,017 sq.ft

Under Offer – February 2025! (CB G7)

Up & Away Aviation Stores (CB G10)



Hangar 15 Offices
(Landside)
& Hangar Stores
(Airside)

 = available space

**Hangar 15
North Side**

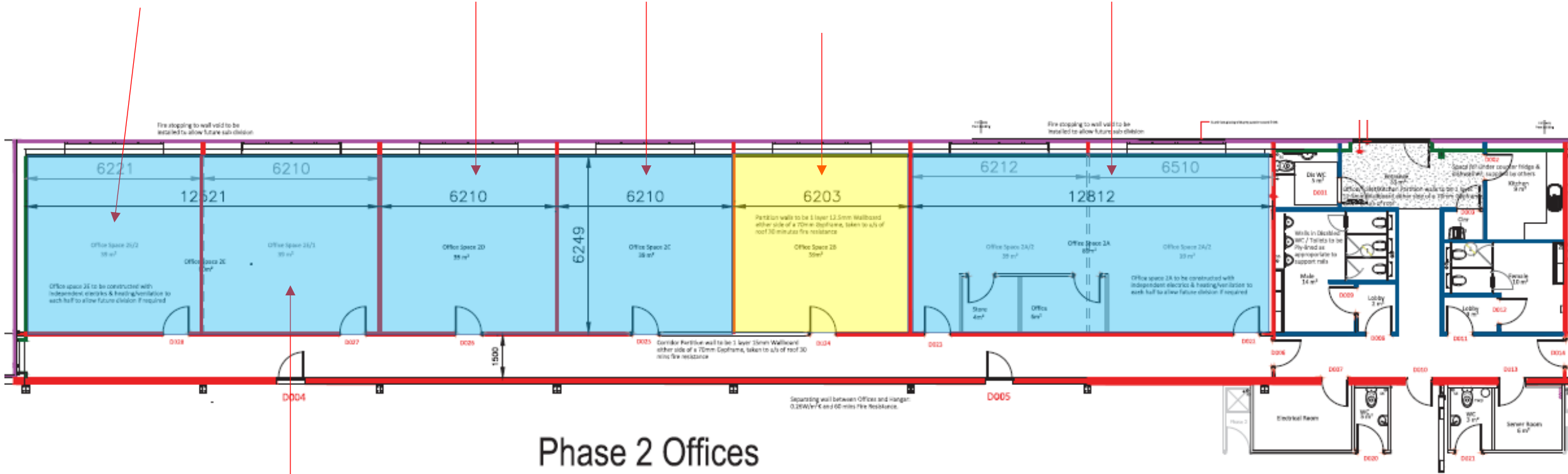
CDP Aero (Tayab Alam)
(2E/2) = 420 sq.ft.

P3 Engineering
(2D)

Industriflyg
(2C)

was Jetworks (2B)
available April 2025
**£1,155.33+VAT/
month all-incl.**

Ultimate Warbirds
(2A)



Phase 2 Offices

**European Aviation
Design Services Ltd**
(2E/1) from 1.12.23

**ALL NORTH SIDE HANGAR 15
OFFICES CURRENTLY
OCCUPIED**

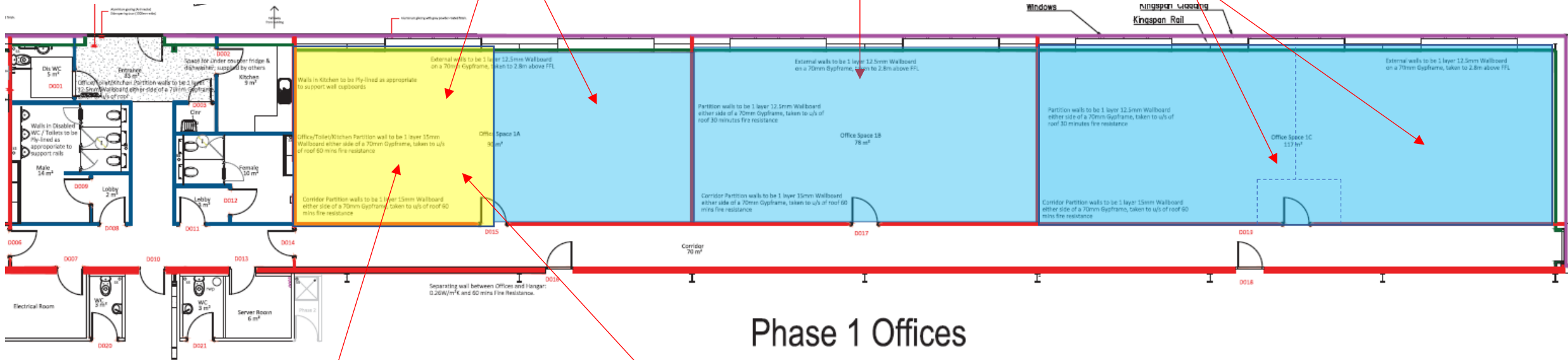
Hangar 15 South Side

NOTE – ALL BRAND NEW SPACE

Half available to rent but Little Jet Co. currently occupying other half (1A) – 969 sq.ft.

OxCCU (Oct. 23) (1B) – 840 sq.ft.

OxCCU (1C) – 1,260 sq.ft.



Phase 1 Offices

**Half 1A = 485 sq.ft. =
£929+VAT/month all-inclusive**

**Could possibly be subdivided
but prefer not to alter**

Using half 1A as pay-per-desk 'hot-desk' shared office environment for individual aircraft owners/pilots/engineers @ £150+VAT/month/desk suite



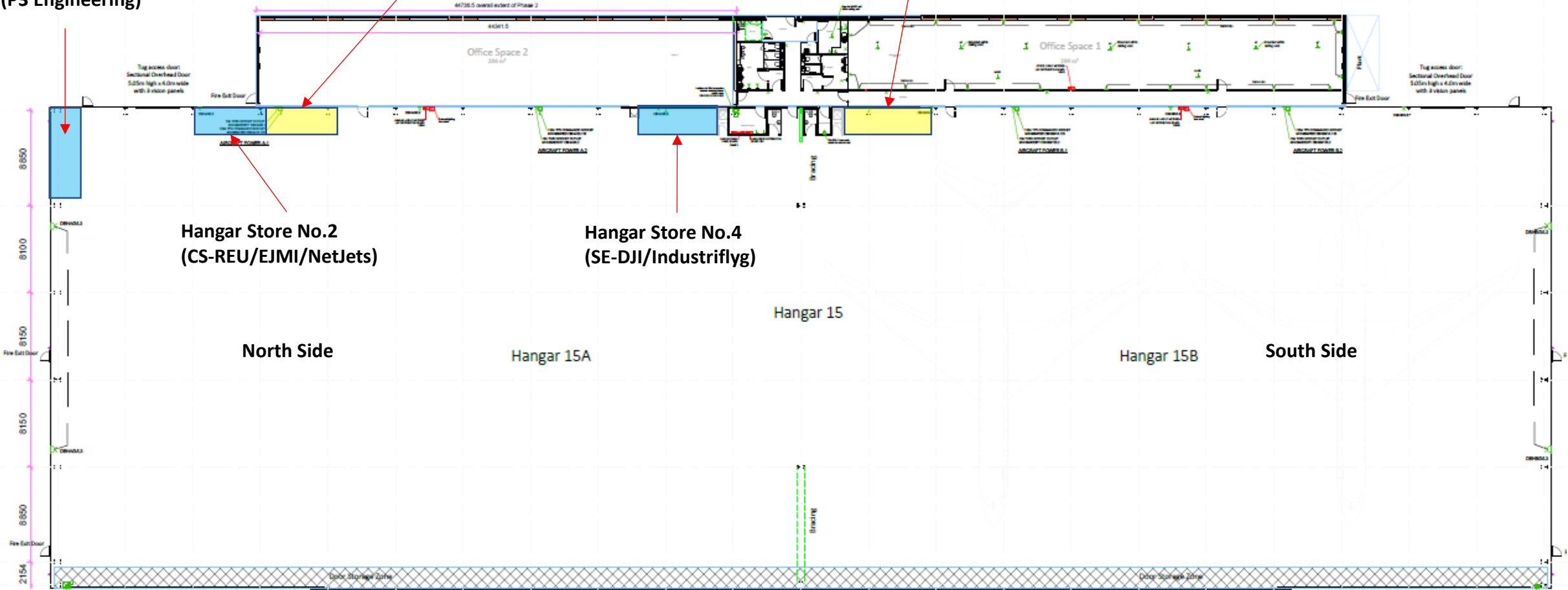
Hangar No.15 built-in lockable stores

Hangar Store No.3
120 sq.ft. (was Jetworks)
£2,000+VAT/annum*

Hangar Store No.5
200 sq.ft. (was Inflight)
£3,000+VAT/annum*

** charged for on an up-front, annual basis only, not monthly*

Hangar Store No.1 (P3 Engineering)





MCC Building /
Building No. 15
Offices/Stores
(*100% Airside*)

 = available space

Building 15 'MCC Building'

Helicentre from June 22
ex-CAE Sim Hall & Workshops
2,395 sq.ft.



*Set up as 40 seat
lecture hall/training
room!*

Available to Rent
ex-CAE Offices, +40-seat Lecture Room, Store and
Sim Room - Approx. 3,755 sq.ft. (5 main rooms)

Approx. £2,500+VAT/month – TBA Rent Only

*Needs thorough refurbishment/upgrade unless for
basic airside storage only*

Leading Edge Aviation
5,872 sq.ft. (two
floors)

*Portacabin could be separate from
the rest of the building*

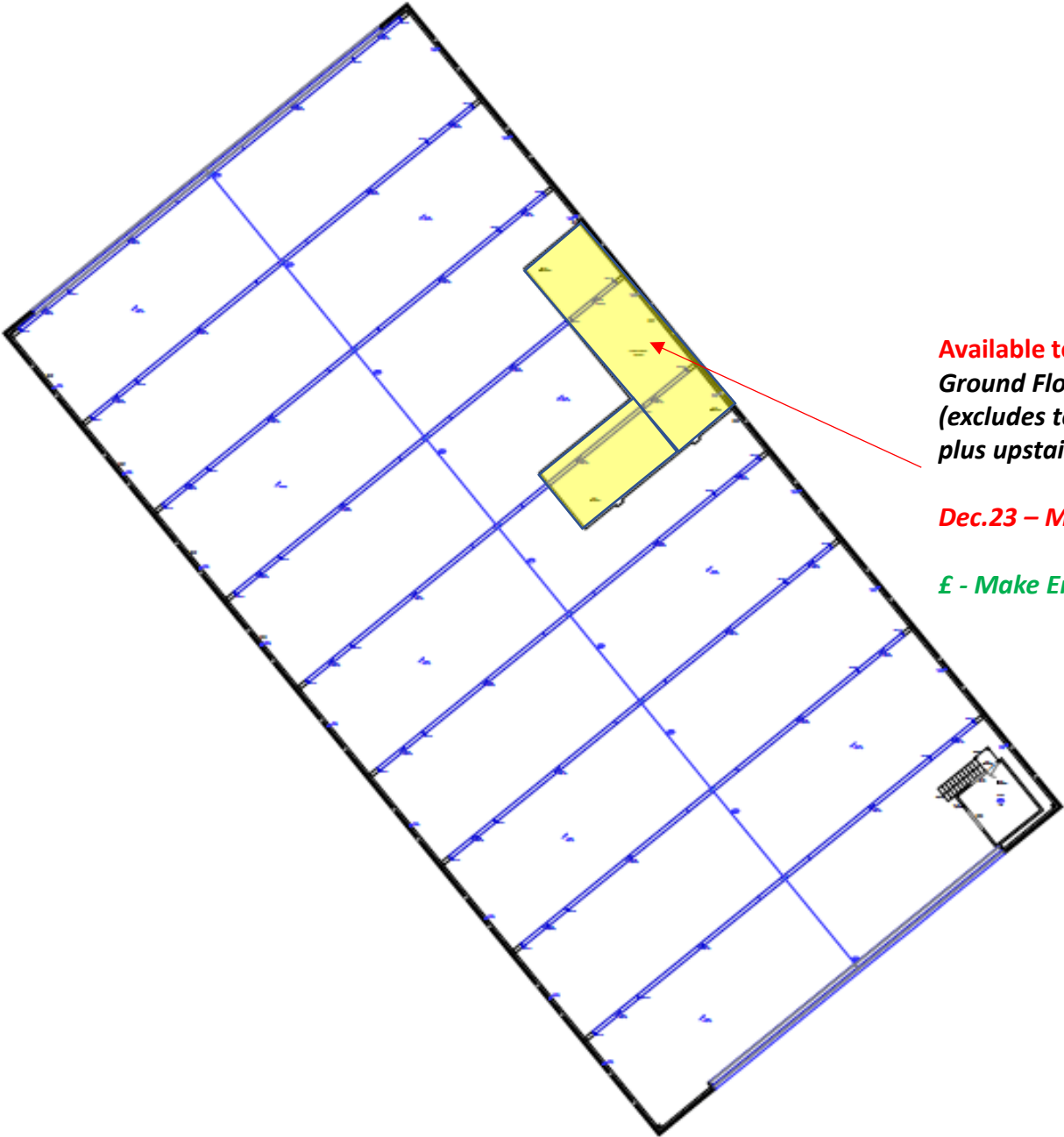
**Note – this entire building is airside, therefore access
restricted only to airside pass holders and no
vehicles allowed without airside permits – zero
unescorted visitor access**

Hangar 8 Offices (*Airside*)



= available space

Hangar 8 Offices & Stores

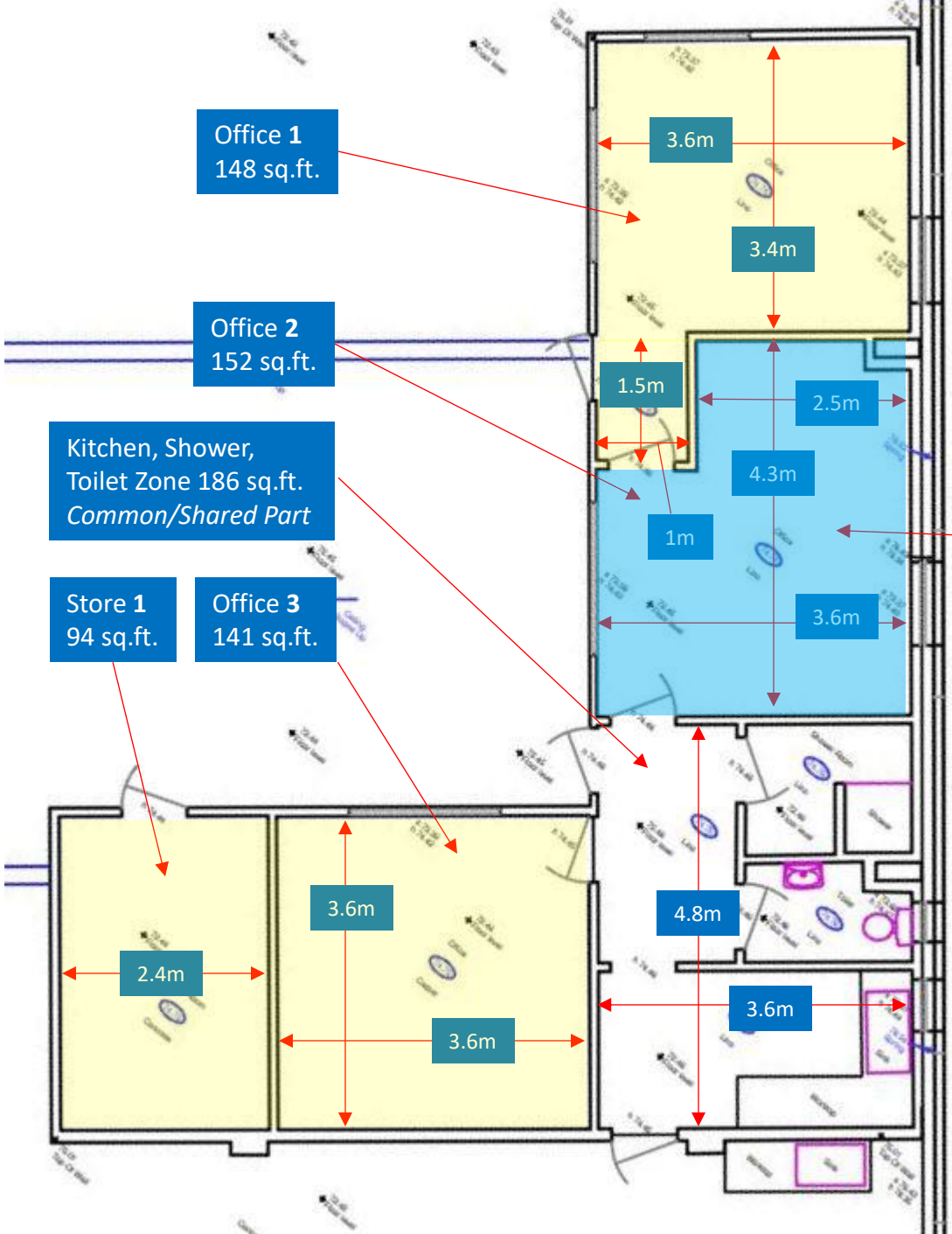


Available to Rent (May 2022)
*Ground Floor – 3 x Offices = 441 sq.ft.
(excludes toilet/kitchen/hall space)
plus upstairs store = 279 sq.ft.*

Dec.23 – Midland Aircraft Co. have taken an office.

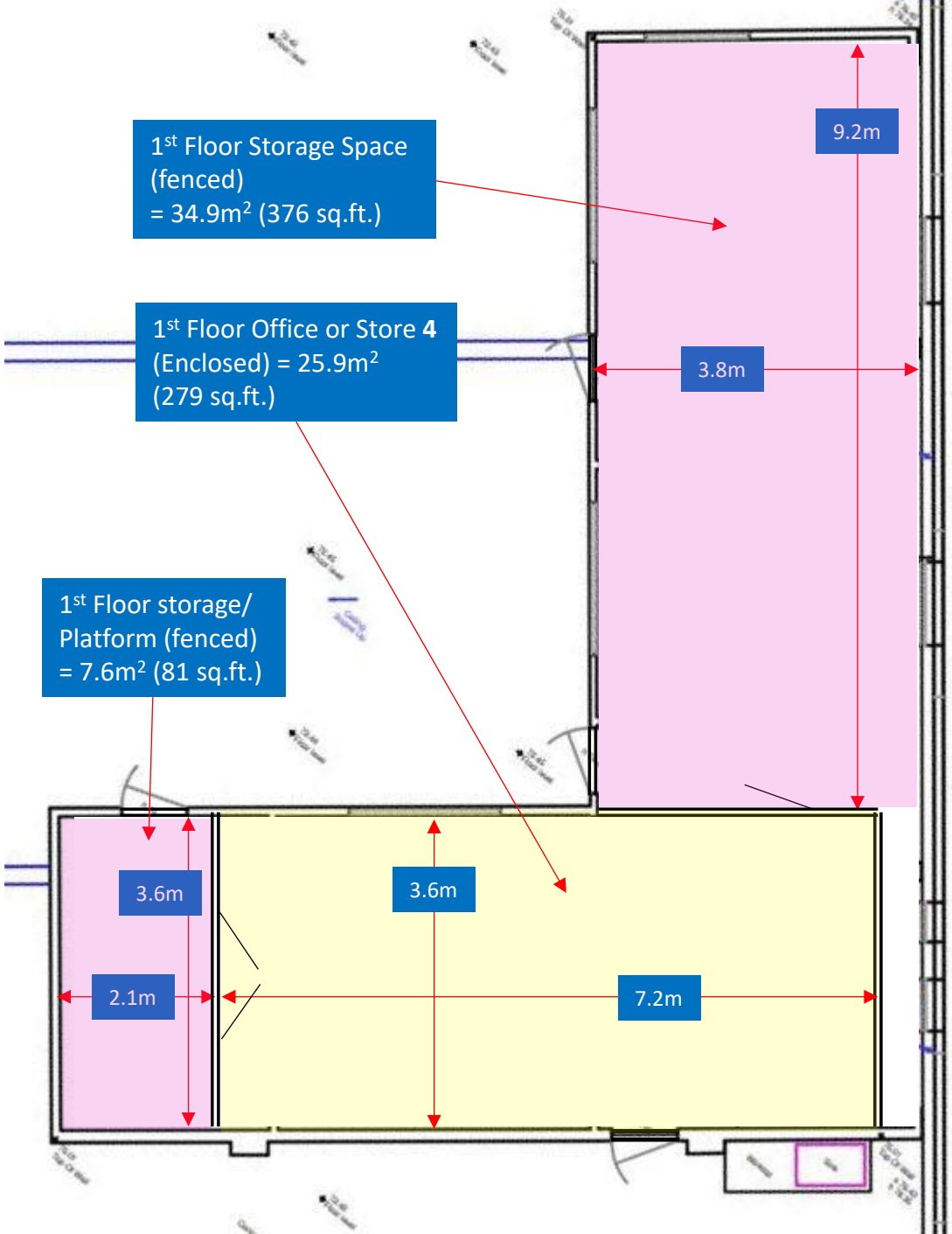
£ - Make Enquiry

Hangar No. 8 Offices & Stores



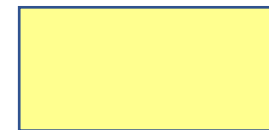
*From Dec.23
– Midland
Aircraft Co.
have office
No.2*

Hangar 8 Offices & Stores





Hangar 10
Ex-Sim Halls
*(Airside or
Landside)*



= available space

Hangar 10 Offices or Stores

*Now Xcess Aviation
from mid-Feb 2025*

*Now Digital Aerospace
from mid-Feb 2025*

One Hall Left – Feb 2025

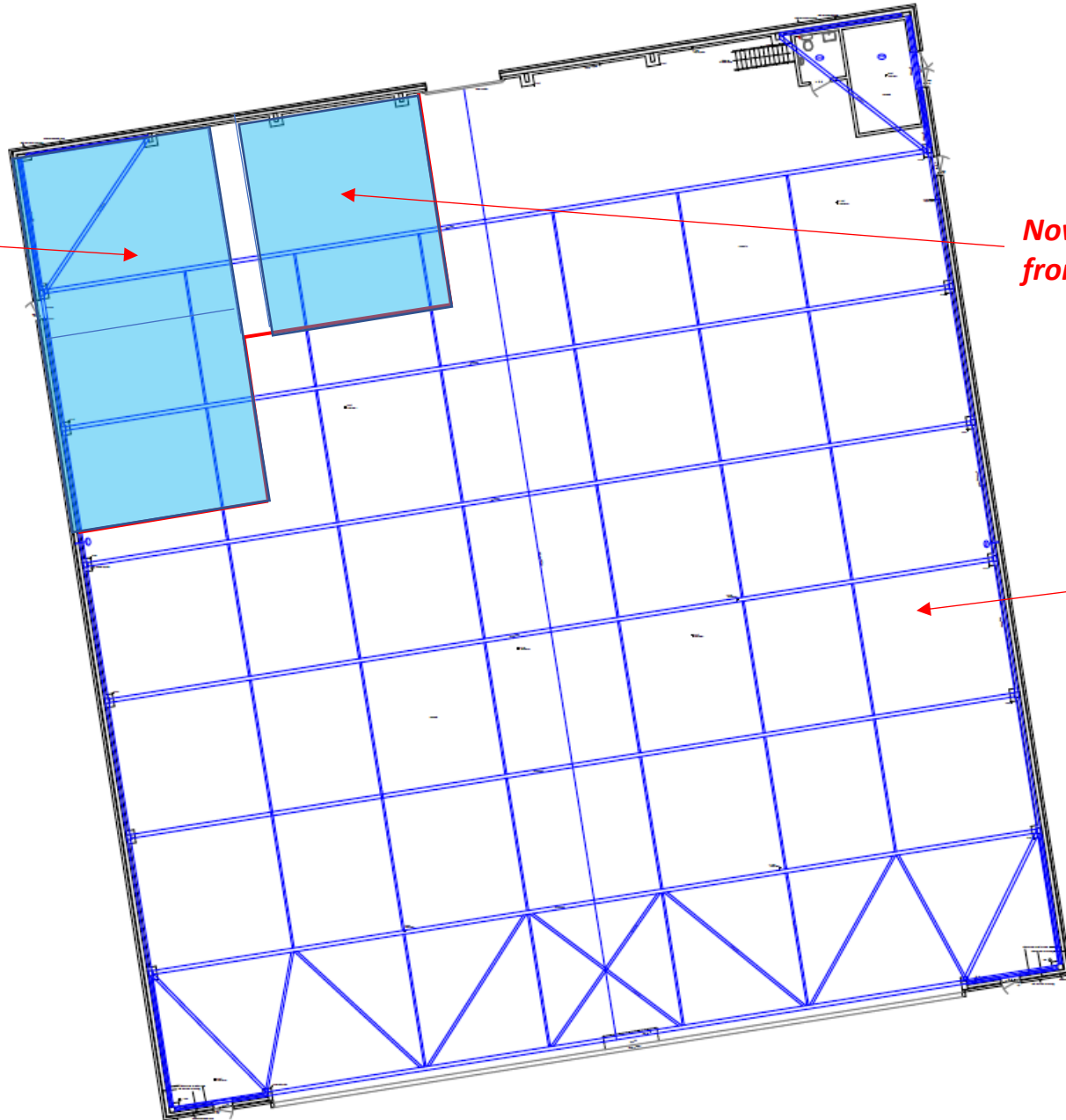
Ex-simulator halls x 3 – convertible into office or storage space – very high ceilings (4.3m) allowing potentially for mezzanine structure (open plan) plus another floor above structure inside hangar

- 2,476 sq.ft. footprint

Can be all Airside or all Landside

Needs total refurb + windows for potential office use however the rooms have modern lighting, air-conditioning and fresh air systems already

£ - Make Enquiry but circa £2,500+VAT/month rent only for whole (3 bays)



Note:

Remaining hangar floor space is 18,812 sq.ft and would be best combined with the 'sim hall' space as a single unit

Whole hangar including sim bays would be circa £230K+/annum in rent only

Hangar 10 Offices or Stores

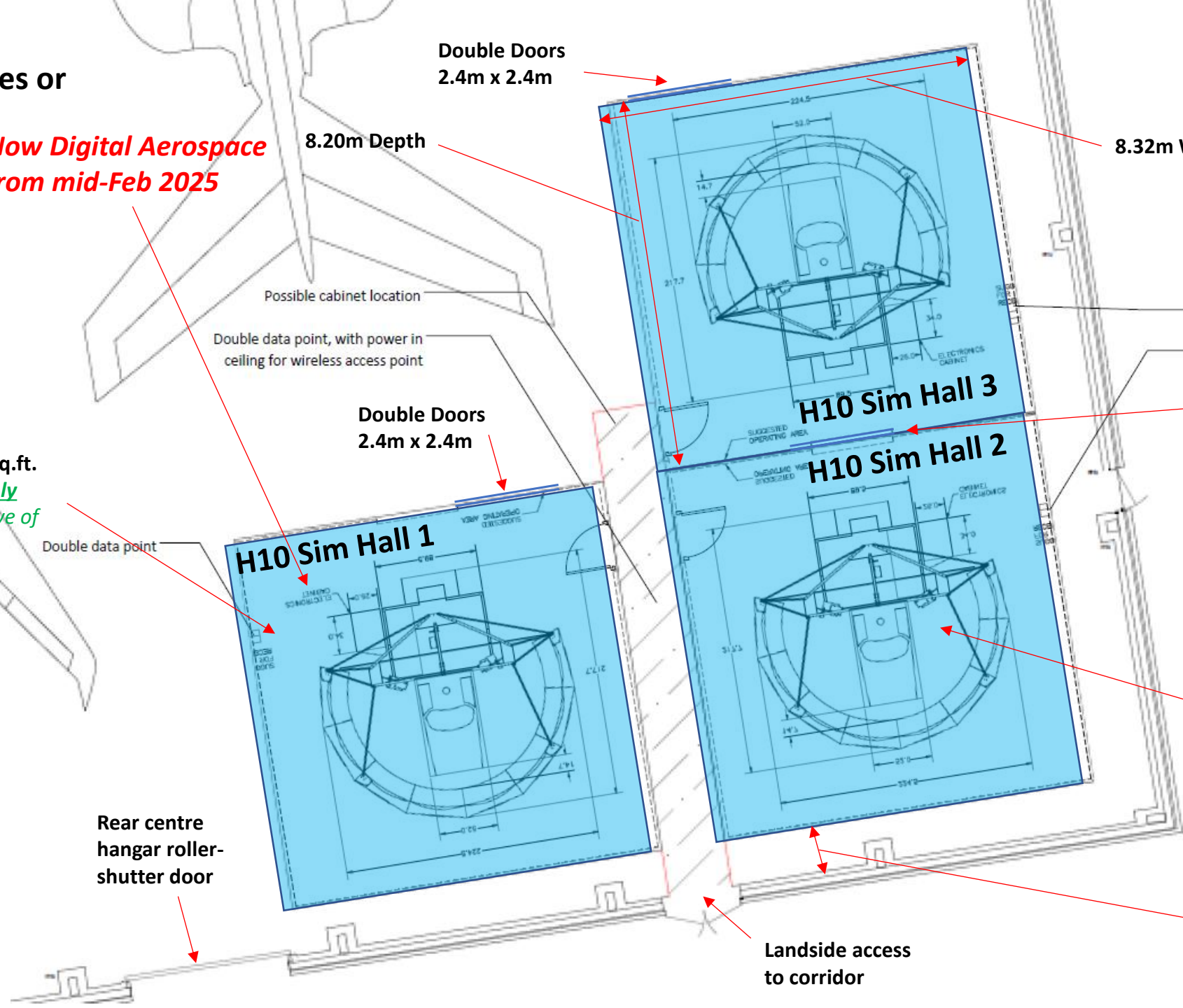
Now Digital Aerospace from mid-Feb 2025

Currently no room has windows either into the hangar or outside but this can be assessed and added

EACH BAY is approx. 735 sq.ft.
£850+VAT/month Rent Only
£1,225+VAT/month inclusive of Service Charge/Biz Rates

Each Hall has a ceiling height of 4.3m (14 ft) which would allow for internal mezzanine for additional space 'upstairs'

Each hall is approx. 8.32 x 8.2m (734 sq.ft.)



8.20m Depth

Double Doors
2.4m x 2.4m

8.32m Width

Possible cabinet location

Double data point, with power in ceiling for wireless access point

Double Doors
2.4m x 2.4m

Double data point

Double data point

Double Doors
2.4m x 2.4m

H10 Sim Hall 3

H10 Sim Hall 2

H10 Sim Hall 1

Double data point

The roof structure of the halls is very strong and could take a '3rd' floor for storage or offices

Now Xcess Aviation from mid-Feb 2025

Rear centre hangar roller-shutter door

Landside access to corridor

Approx. 1.5m gap between internal hall wall and external hangar wall



No.6

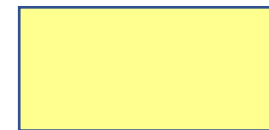
No.7

No.5

No.1

Whole Hangars
potentially available
now:

No.1, No.5, No.s 6 & 7



= available space

Ground Floor

Hangar No. 6 & 7

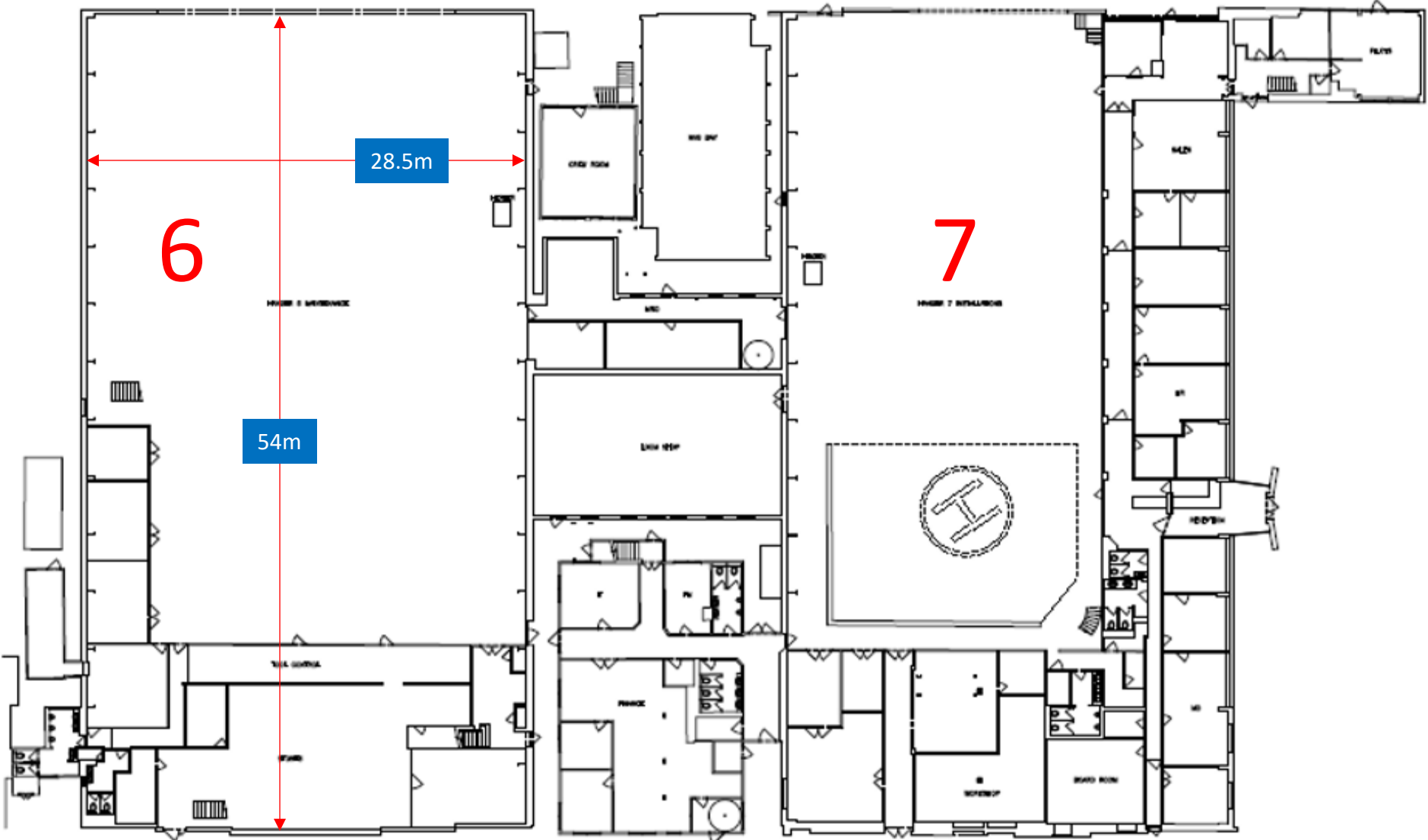
Ex-Airbus Helicopters came back to airport in September 2024

In excess of 57,000 sq.ft.

Subdivision potentially possible, but looking to rent as a whole

Very high ratio of offices to hangar floorspace with additional stores, workshops etc.

Make enquiry for more information, but circa £500K+/annum in rent only



12,000 sq.ft. of useable, clear hangar floor space

8,000 sq.ft. of useable, clear hangar floor space

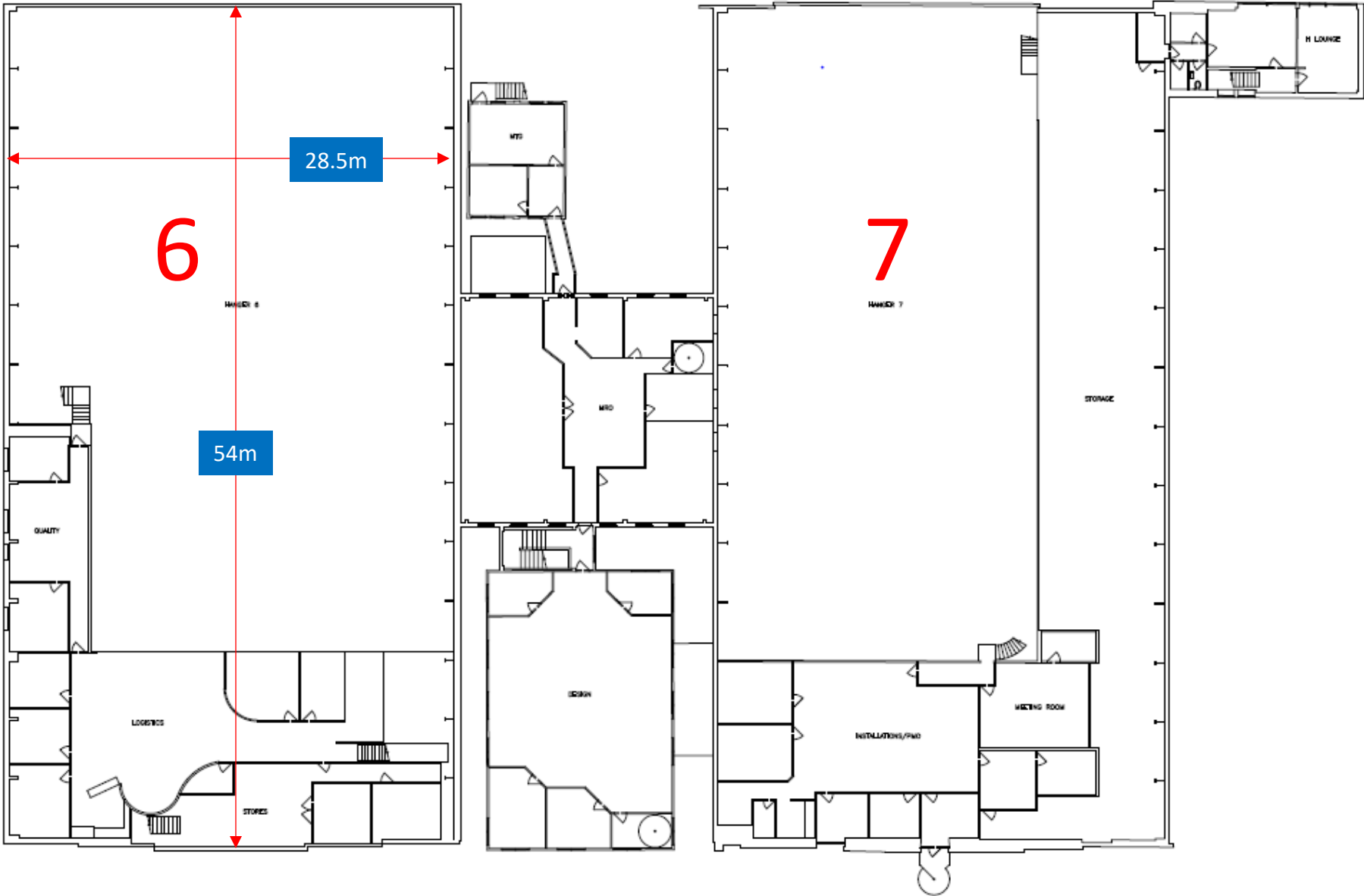
Hangar No. 6 & 7

1st Floor

Make enquiry for more information, but circa £500K+/annum in rent only (whole facility)

Note – a new detailed survey of the whole building is being undertaken in late March which will be available on request to better assess possible subdivision

First Floor



Hangar No. 5

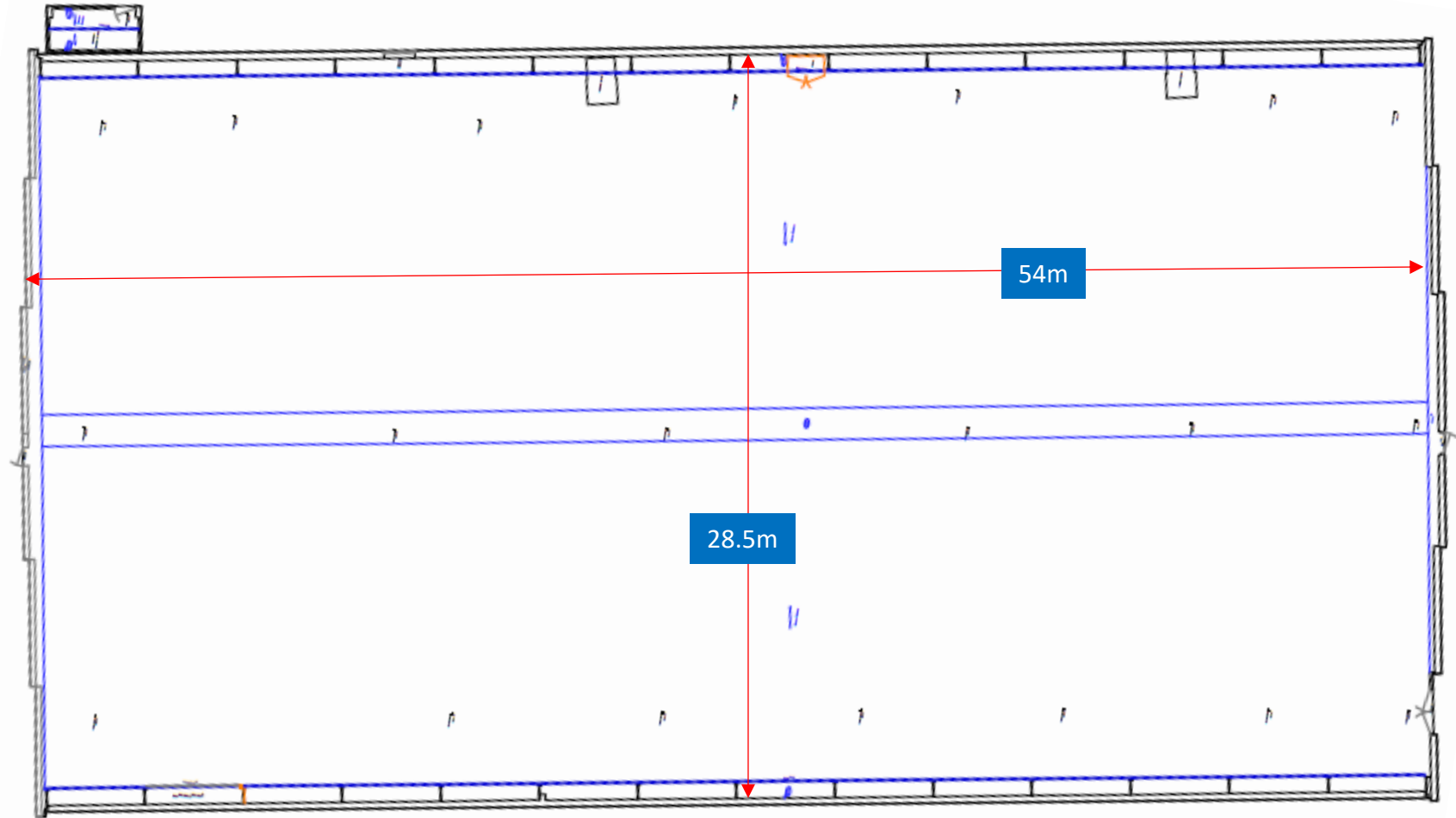
*Ex-Airbus Helicopters
came back to airport in
September 2024*

16,743 sq.ft.

*Airside access south
side, landside access
north side*

*Empty space (i.e. no
offices), suspended
ceiling, LED lighting.
MRO or pure storage.*

***Make enquiry for more
information but circa
£150K+/annum in rent
only***

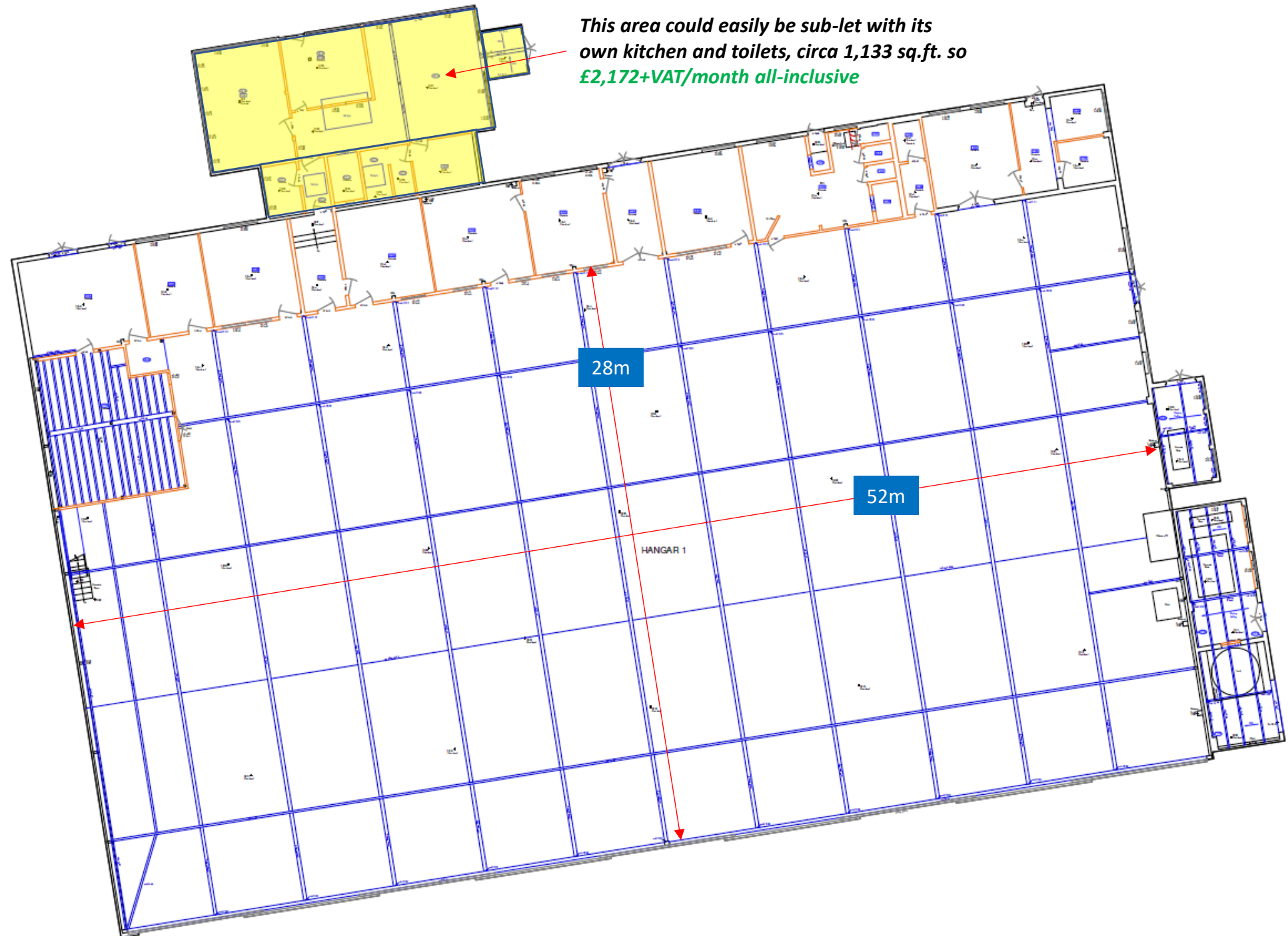


*currently used by airport for shared individual aircraft hangarage

Hangar No. 1

Due to be occupied by Flying Smart Limited mid-November 2024

Interested in sub-letting building to the front (landside) of the hangar as indicted here





Our new AerOx R&D Science and Technology park is being built now at the entrance to the airport

AerOx Building One will be completed by this summer next to a new Greggs-franchised retail café

See www.aerox-oxford.com for more details of the 200,000 sq.ft. planned

Savills rather than the airport direct are marketing this development

