



For Lease: Industrial

2050 Ellesmere Road, Unit 3

Outstanding 4,000 SF Industrial Unit for Lease

Lennard:

Here is where your business will *grow*.

lennard.com

2050 Ellesmere Road, Unit 3



4,000 SF industrial unit available for lease at Markham Road and Ellesmere Road in Toronto.



Available Space

4,000 SF

Office Space

60%



Clear Height

16'



Shipping

1 Truck Level



Power

600 Volts



Zoning

E0.7



Net Rent

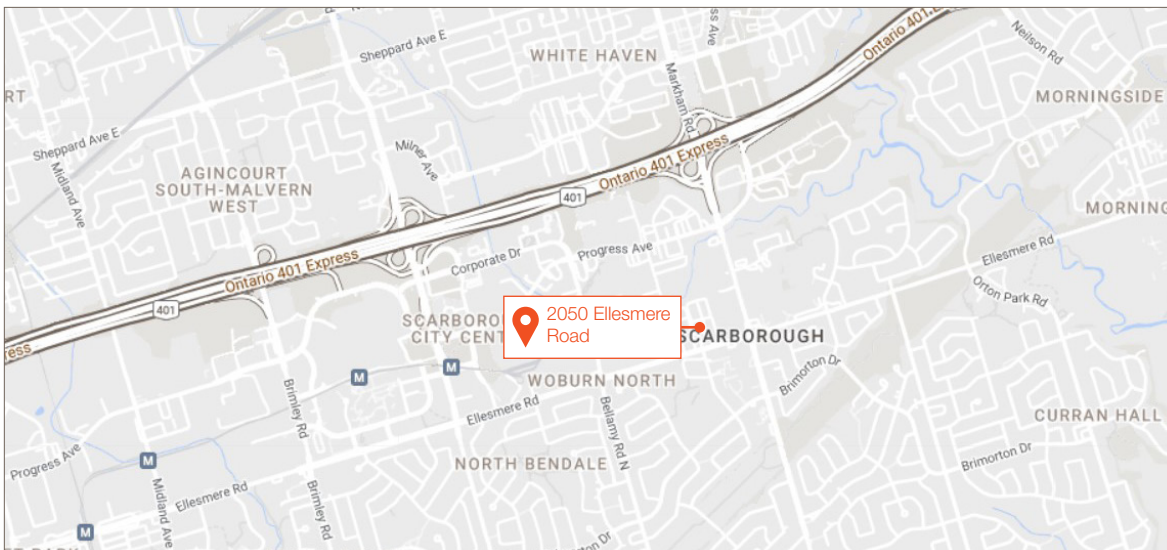
\$16.95 PSF

Additional Rent (2026)

\$5.89 PSF

Property Highlights

- Great location, minutes from Hwy 401 & TTC accessible
- Unit consists of 60% office space and 40% warehouse space (office area may be reduced)
- Good signage exposure in the complex
- 60% air conditioned

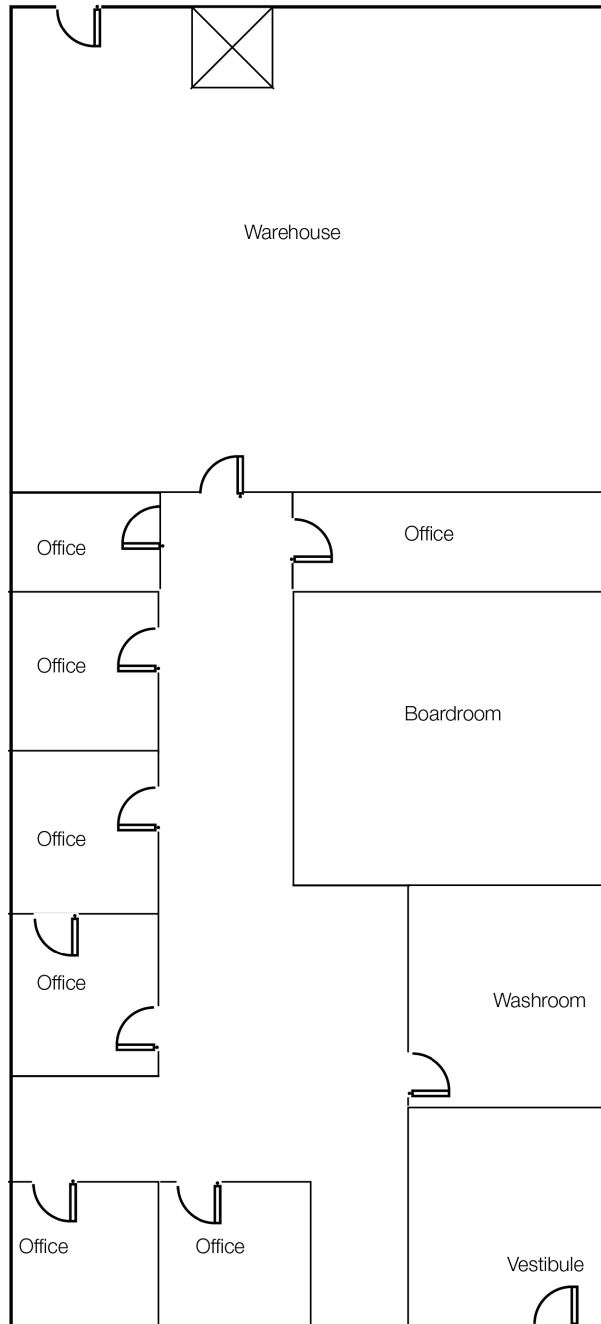


2050 Ellesmere Road, Unit 3



Floor Plan

Existing Layout for Unit 3 | Rentable SF: 4,000 SF



Note: Drawing may not be to scale



Lennard:

Marty Atkins**, Vice President
416.565.3455
matkins@lennard.com

201-60 Columbia Way, Markham
905.752.2220
lennard.com

**Broker

Statements and information contained herein are based on information furnished by principals and sources we deem reliable; however, we make no representation or warranty as to the accuracy, completeness or current status of such information and assume no responsibility for any errors, omissions, or misstatements. All information should be independently verified by the recipient. Lennard Commercial Realty, Brokerage.