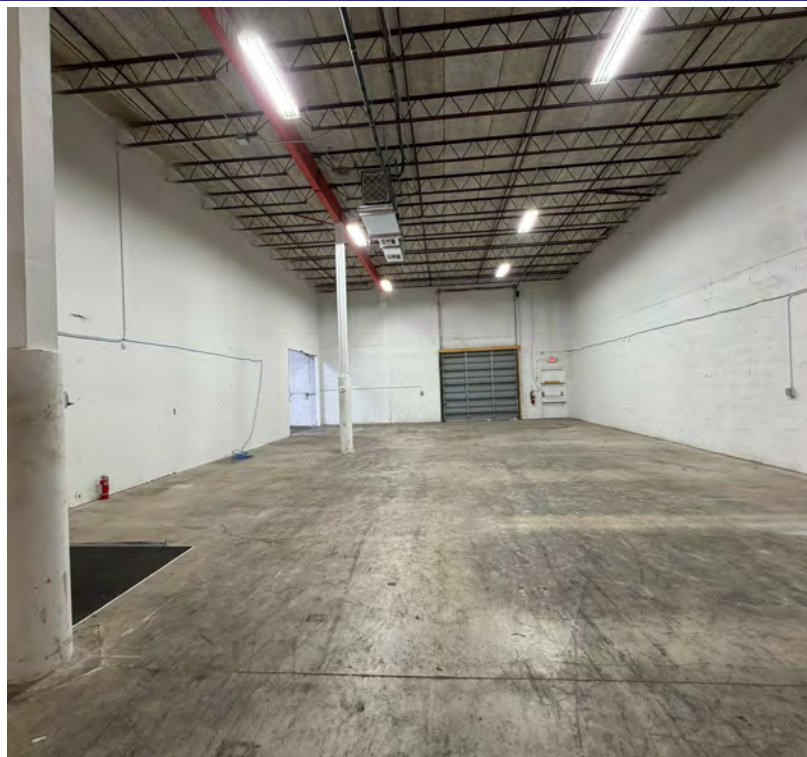


GATEWAY PARK

6500 NW 15TH AVE, FORT LAUDERDALE, FL 33309

SUITE 400



SPACE HIGHLIGHTS

- 3,154 SF
- 100% air-conditioned space
- 2 offices totaling 444 SF
- Impact glass
- kitchenette
- End cap unit
- Rear 10' x 10' loading dock
- 19' clear ceiling height
- Ceiling mount crane in warehouse



HALEY PRESSER

Property Manager / Sales Associate
Direct: 954.485.9200 | Cell: 954.254.5396
Haley@levyrai.com

ANGIE WEAVER

Lauderdale Lakes and Lauderdale Manager
Direct: 954.485.9200 | Cell: 917.645.2339
angie@levyrai.com



FOR LEASE

GATEWAY PARK

6500 NW 15TH AVE, FORT LAUDERDALE, FL 33309

SUITE 400 ADDITIONAL PHOTOS



HALEY PRESSER

Property Manager / Sales Associate
Direct: 954.485.9200 | Cell: 954.254.5396
Haley@levyrai.com

ANGIE WEAVER

Lauderdale Lakes and Lauderdale Manager
Direct: 954.485.9200 | Cell: 917.645.2339
angie@levyrai.com



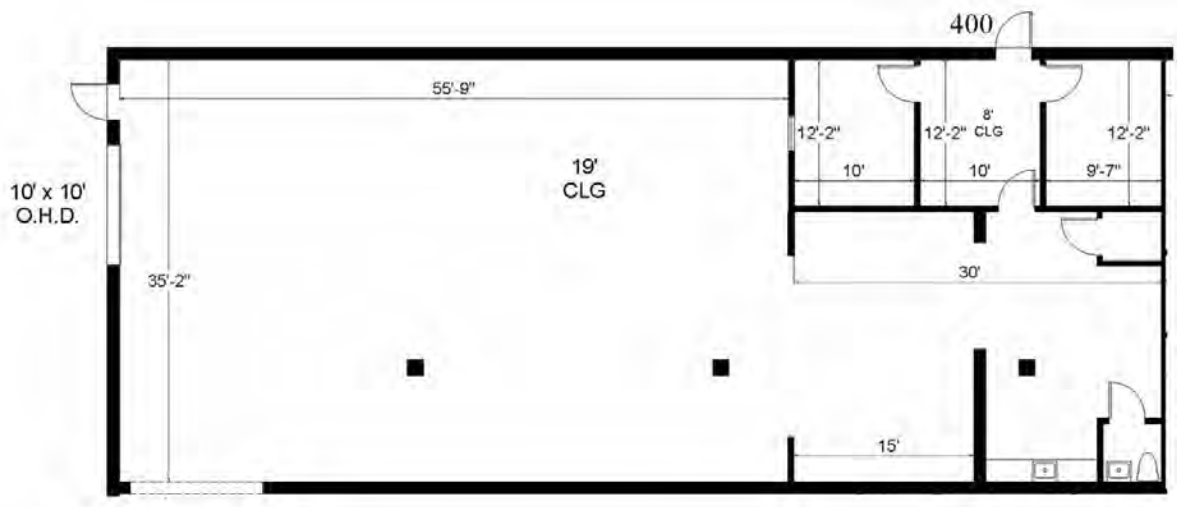
GATEWAY PARK

6500 NW 15TH AVE, FORT LAUDERDALE, FL 33309

SUITE 400 FLOOR PLAN

GATEWAY COMMERCE PARK

6500 NW 15TH AVENUE | SUITE 400 | FT LAUDERDALE, FL 33309



Office 444 SF
 Warehouse 2,710 SF

3,154 SF Rentable Sq. Ft.
www.LevyRealtyAdvisors.com

HALEY PRESSER
 Property Manager / Sales Associate
 Direct: 954.485.9200 | Cell: 954.254.5396
Haley@levyrai.com

ANGIE WEAVER
 Lauderdale Lakes and Lauderdale Manager
 Direct: 954.485.9200 | Cell: 917.645.2339
angie@levyrai.com

