



For sublease

30,240 SF available

10963 Florida Crown Dr
Orlando, FL 32824

 **JLL** SEE A BRIGHTER WAY

Property overview

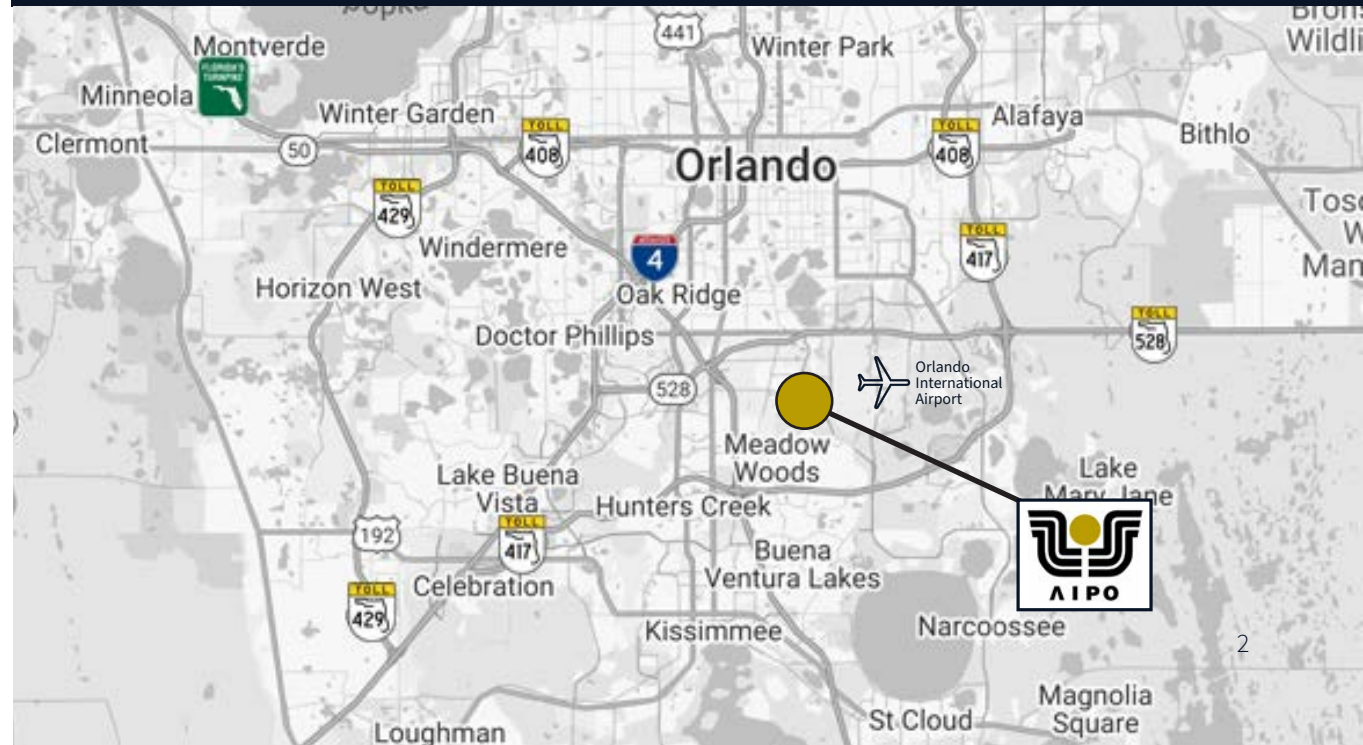
- 221,673 SF building
- 30,420 SF available
- 36' clear height
- Rear load
- 4 - 9' x 10' dock doors
- 285' building depth
- 54' x 54' column spacing
- ESFR sprinklers
- 135' truck court
- 1.00/1,000 SF parking ratio
- Trailer parking available
- Built in 2023
- Zoned I-G
- Available in 30 to 60 days
- One year sublease term
- **\$12.00/SF NNN**



AIPO

10963 Florida Crown Drive is located in Airport Industrial Park at Orlando (AIPO), one of Central Florida's most well-known industrial parks, which offers an ideal location for businesses seeking strategic positioning and excellent connectivity. Situated adjacent to Orlando International Airport (MCO), the park provides unparalleled access to air transportation, making it perfect for companies with time-sensitive shipping needs or those requiring frequent business travel. The park's proximity to major highways, including State Road 528 and Florida's Turnpike, ensures efficient ground transportation for distribution and logistics operations. The park's modern infrastructure combined with its prime location makes it an attractive choice for companies looking to optimize their distribution networks in Central Florida.

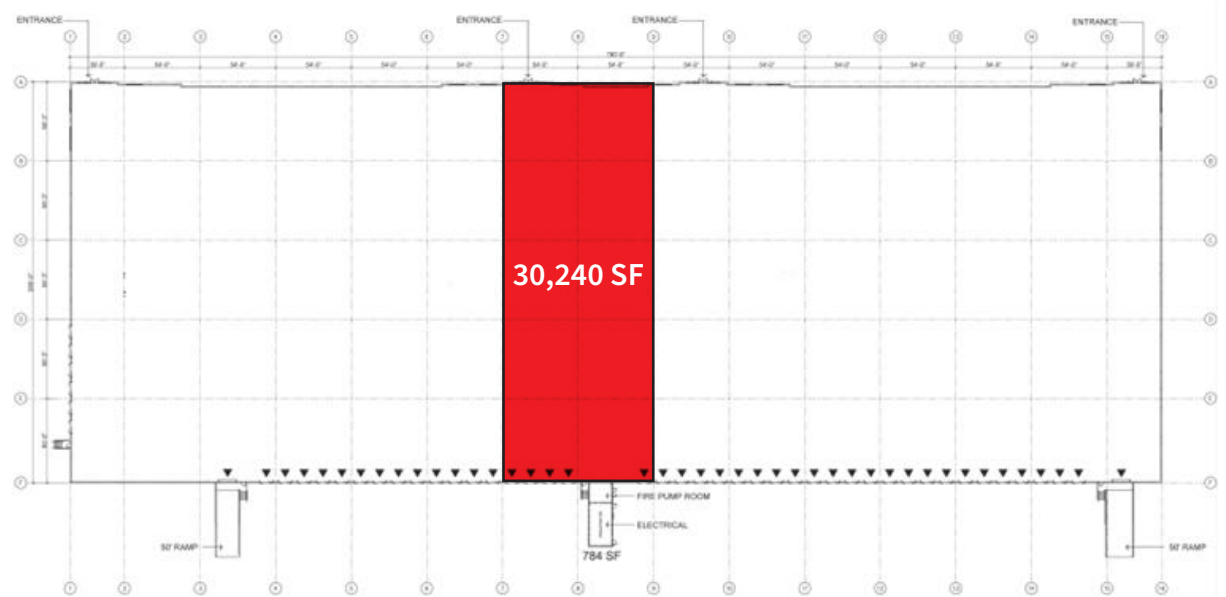
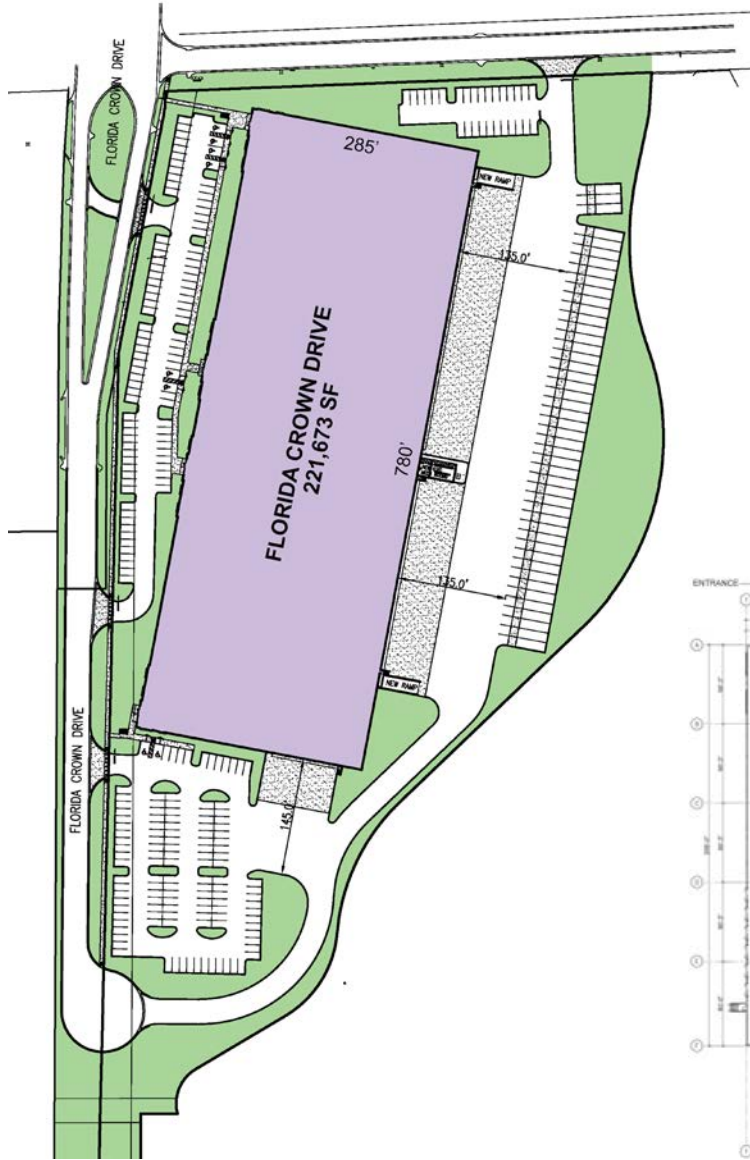
	60 min	120 min	240 min
Total population	3,609,825	9,816,594	21,570,022
Total households	1,348,970	3,909,583	8,603,555
Average HH income	\$105,217	\$101,115	\$105,194
Total businesses	143,907	376,912	964,018
Total employees	1,514,363	3,813,801	8,836,018



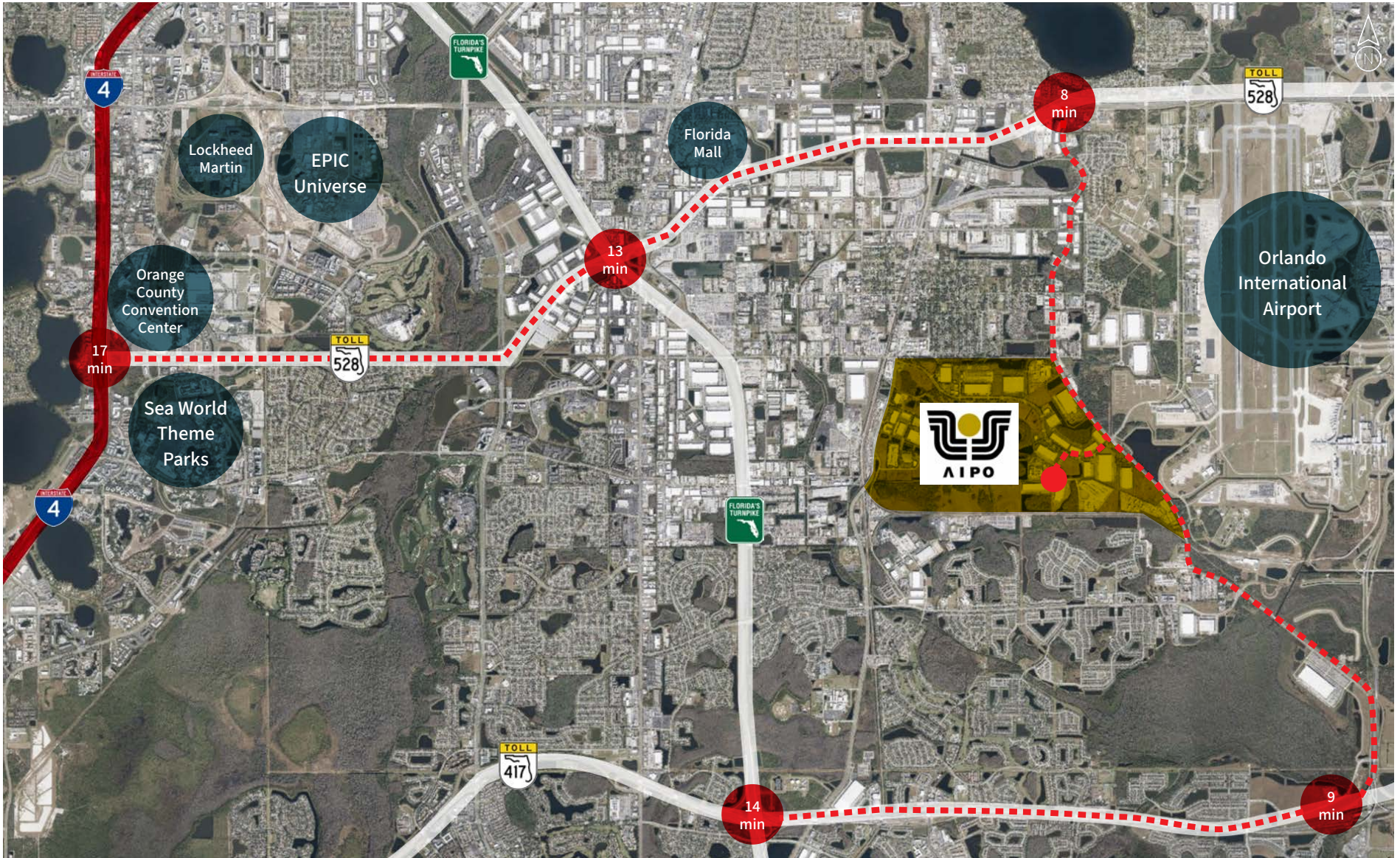
Property aerial



Building plans



Access and amenities



JLL

Bobby Isola, SIOR, CCIM

Executive Managing Director

+1 407 930 1804

bobby.isola@jll.com

Although information has been obtained from sources deemed reliable, JLL does not make any guarantees, warranties or representations, express or implied, as to the completeness or accuracy as to the information contained herein. Any projections, opinions, assumptions or estimates used are for example only. There may be differences between projected and actual results, and those differences may be material. JLL does not accept any liability for any loss or damage suffered by any party resulting from reliance on this information. If the recipient of this information has signed a confidentiality agreement with JLL regarding this matter, this information is subject to the terms of that agreement. ©2025. Jones Lang LaSalle Brokerage, Inc. All rights reserved.

Jones Lang LaSalle Brokerage, Inc., a licensed real estate broker across the US | 250 South Orange Avenue, Suite 700P, Orlando, FL 32801