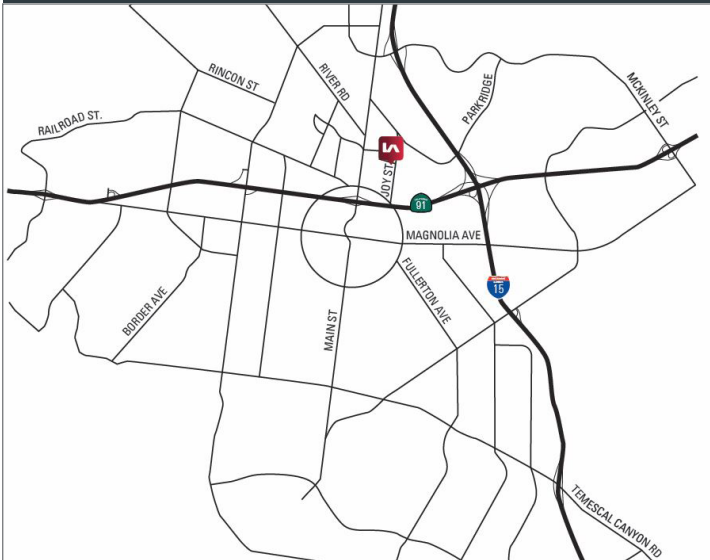




420 PRINCLAND COURT CORONA, CA

AVAILABLE FOR LEASE
±9,950 SF INDUSTRIAL BUILDING



PROPERTY FEATURES

- » 4 GL Doors
- » 600 Amps of Power
- » Drive Around Building
- » 16' Clearance
- » 2:1 Parking

JOHN MARTIN

jmartin@lee-assoc.com

D 949.373.2941

DRE 01346629

CHRIS COYTE

ccoyle@lee-assoc.com

D 909.373.2935

DRE #01017328

LEE & ASSOCIATES - ONTARIO

3535 Inland Empire Boulevard | Ontario, CA 91765

(909) 989-7771 | lee-associates.com

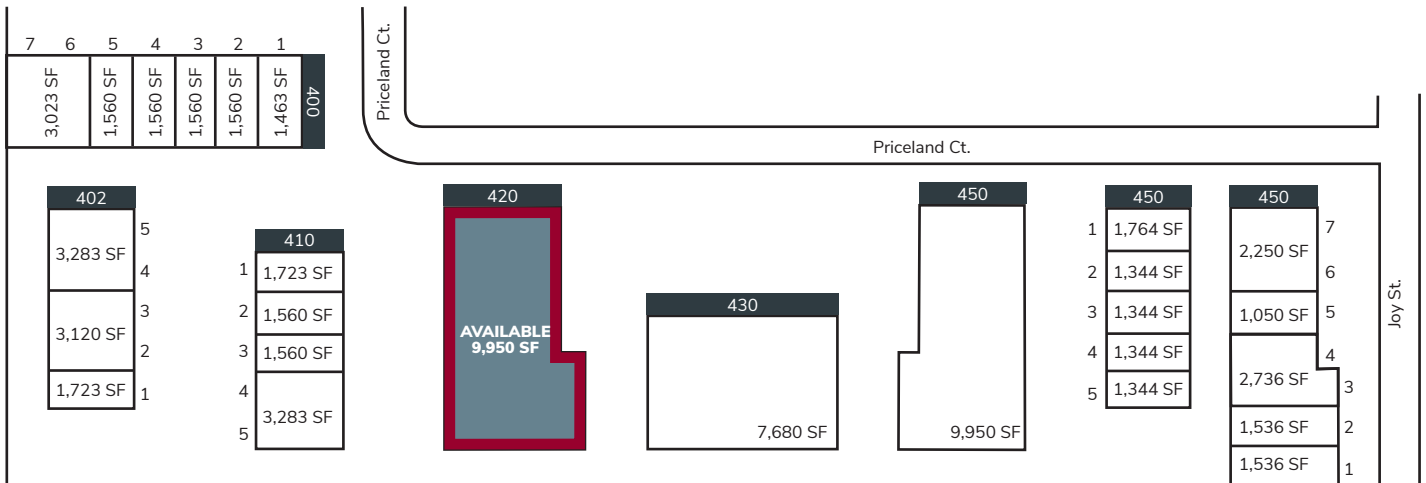
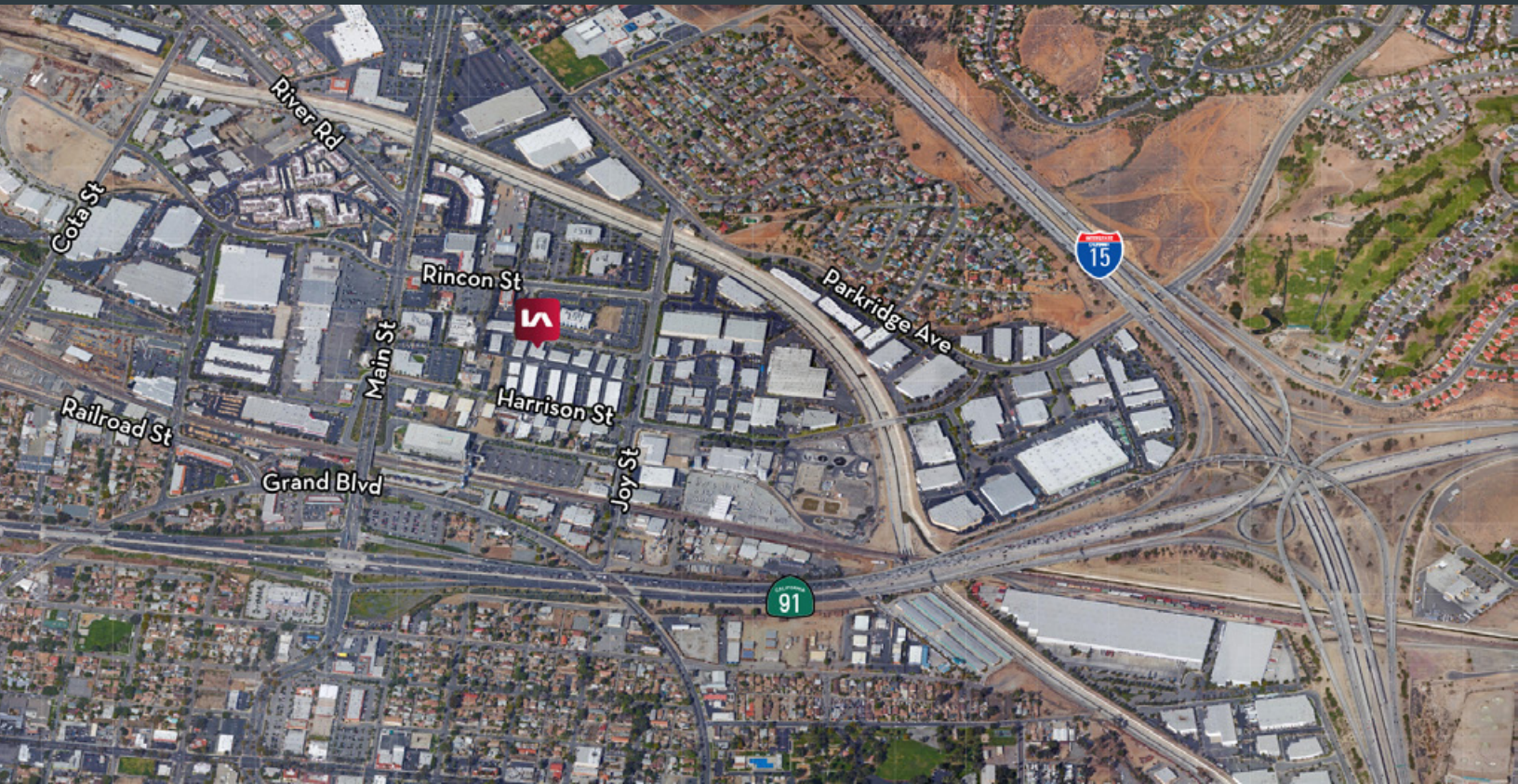
Corporate ID: 00976995



DISCLAIMER: The information contained herein has been obtained from the property owner or other third party and is provided to you without verification as to accuracy. We (Lee & Associates, its brokers, employees, agents, principals, officers, directors and affiliates) make no warranty or representation regarding the information, property, or transaction. You and your attorneys, advisors and consultants should conduct your own investigation of the property and transaction.

420 PRINCELAND COURT

CORONA, CA



JOHN MARTIN
 jmartin@lee-assoc.com
 D 949.373.2941
 DRE 01346629

CHRIS COYTE
 ccoyte@lee-assoc.com
 D 909.373.2935
 DRE #01017328

LEE & ASSOCIATES - ONTARIO
 3535 Inland Empire Boulevard | Ontario, CA 91765
 (909) 989-7771 | lee-associates.com
 Corporate ID: 00976995

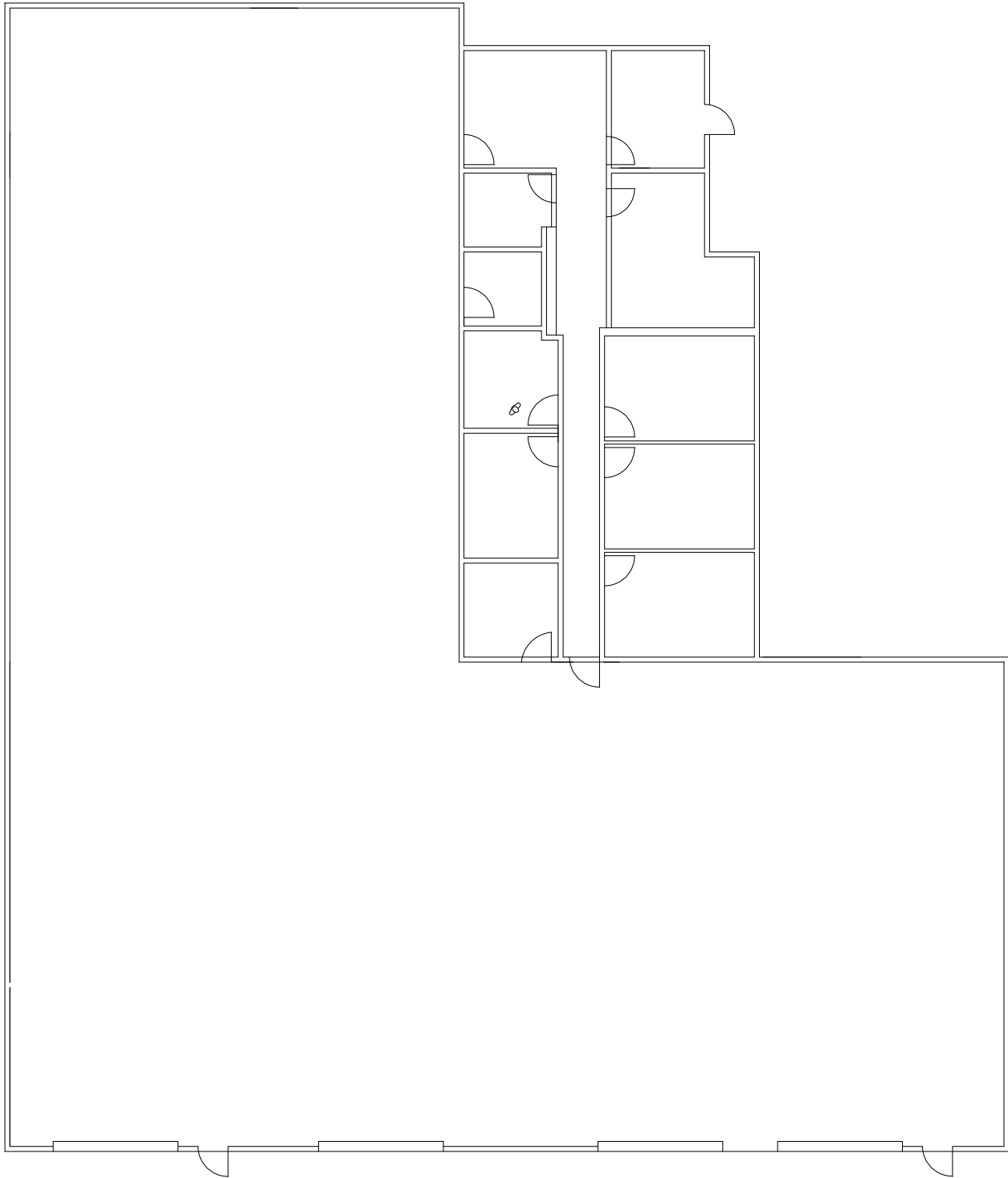


DISCLAIMER: The information contained herein has been obtained from the property owner or other third party and is provided to you without verification as to accuracy. We (Lee & Associates, its brokers, employees, agents, principals, officers, directors and affiliates) make no warranty or representation regarding the information, property, or transaction. You and your attorneys, advisors and consultants should conduct your own investigation of the property and transaction.

420 PRINCELAND COURT

CORONA, CA

420 Princeland Court



JOHN MARTIN

jmartin@lee-assoc.com

D 949.373.2941

DRE 01346629

CHRIS COYTE

ccoyle@lee-assoc.com

D 909.373.2935

DRE #01017328

LEE & ASSOCIATES - ONTARIO

3535 Inland Empire Boulevard | Ontario, CA 91765

(909) 989-7771 | lee-associates.com

Corporate ID: 00976995



DISCLAIMER: The information contained herein has been obtained from the property owner or other third party and is provided to you without verification as to accuracy. We (Lee & Associates, its brokers, employees, agents, principals, officers, directors and affiliates) make no warranty or representation regarding the information, property, or transaction. You and your attorneys, advisors and consultants should conduct your own investigation of the property and transaction.