



# FOR LEASE

IN THE HEART OF FISHERMAN'S WHARF

448 BEACH ST 1,012 SF

38 FT OF FRONTAGE



# INTERIOR PHOTOS

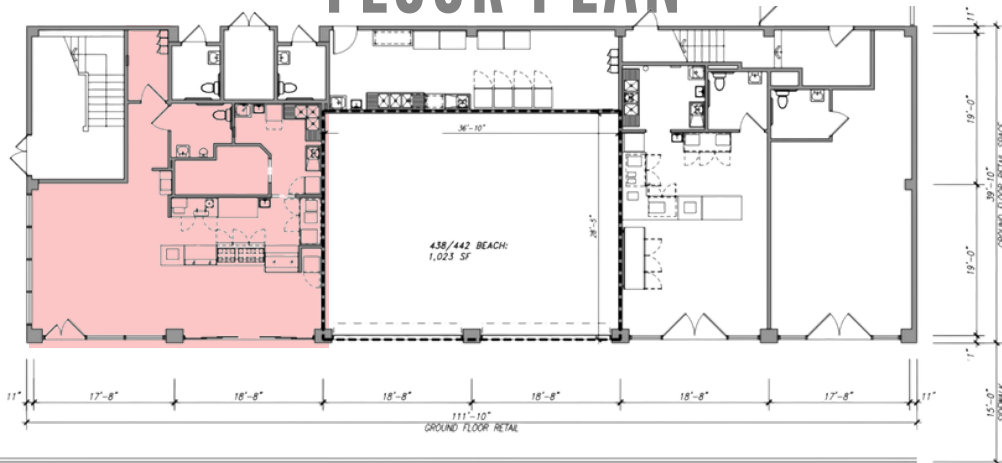
---



# IN THE HEART OF FISHERMAN'S WHARF

- 1,012 SF AVAILABLE IN HEART OF FISHERMAN'S WHARF
- DIRECTLY ACROSS THE STREET FROM F-LINE & E-LINE STREET CAR STOP
- ONE BLOCK FROM HISTORIC FISHING FLEET
- AROUND THE CORNER FROM FISHERMAN'S WHARF CRAB WHEEL SIGN

## FLOOR PLAN



John Cannizzaro | Lic 01898995 | 415.795.2360  
John@cannizzaro-realty.com

# INVESTMENT HIGHLIGHTS

---

- ESTIMATED 16 MILLION ANNUAL VISITORS, 35% BAY AREA RESIDENTS
- VISITORS AVERAGE HOUSEHOLD INCOME OVER \$91,503
- 13 HOTELS WITH OVER 3200 GUEST ROOMS
- ANNUAL CELEBRATIONS: FLEET WEEK, INDEPENDENCE DAY FIREWORKS AND WHARF FEST