

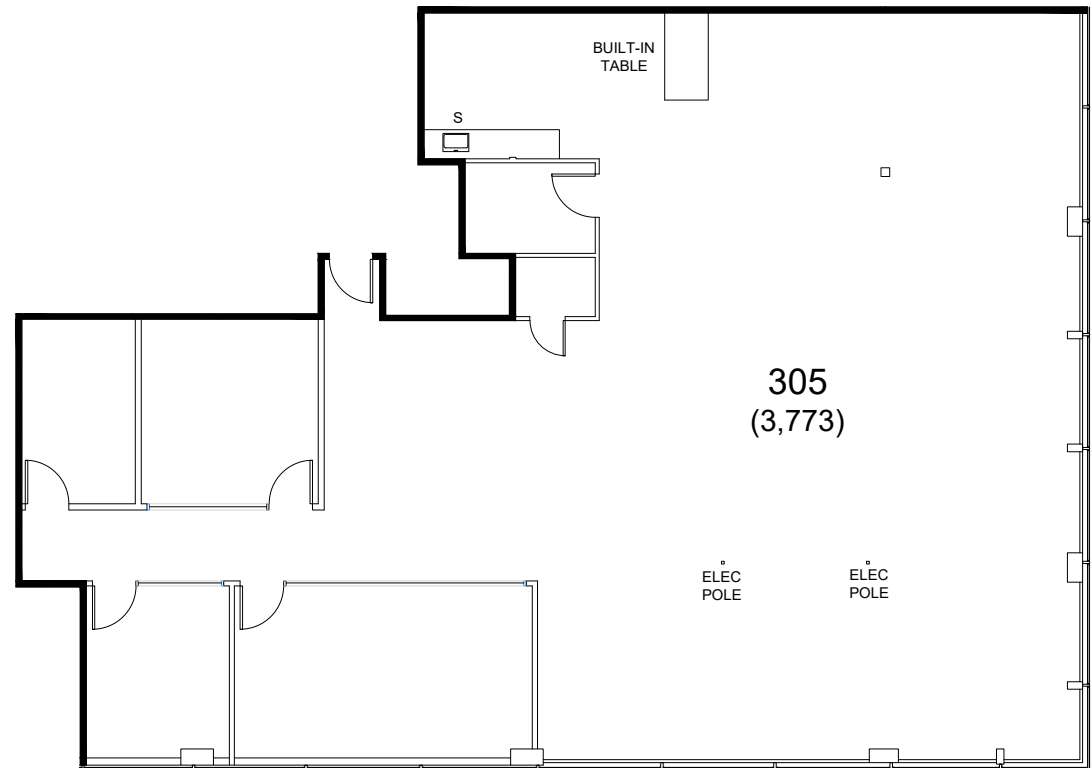
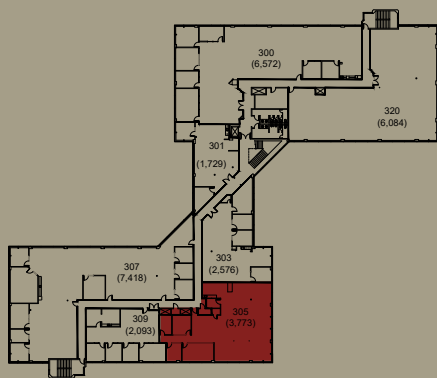


3rd Floor

Suite 305 / ±3,773 RSF

- 3 Private Offices
- Conference Room
- Break Area
- Large Open Space
- Available Now

KEY PLAN



CONTACT US

Chris Blom | Executive Vice President | +1 650 480 2057 | chris.blom@jll.com | LIC #02031205
Ben Paul | Vice Chairman | +1 650 401 2123 | ben.paul@cushwake.com | LIC #01210872

[BACK TO AVAILABILITIES](#)

