



Burke Town Plaza 9554 Old Keene Mill Road Burke, VA

2nd Floor Offices for Lease



Office suites from 650 sf – 1,700 sf

Specifications

- Flexible suite sizes ranging from approximately 650 - 1,700 SF
- Available for immediate occupancy
- \$18.00 - \$19.00 PSF (plus electric)
- Second-floor walk-up access
- Windowed offices with independent HVAC control
- Ample free surface parking for tenants and visitors

Property Information

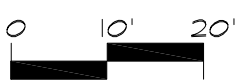
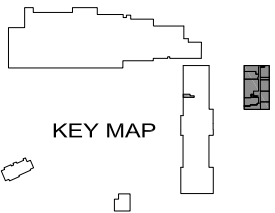
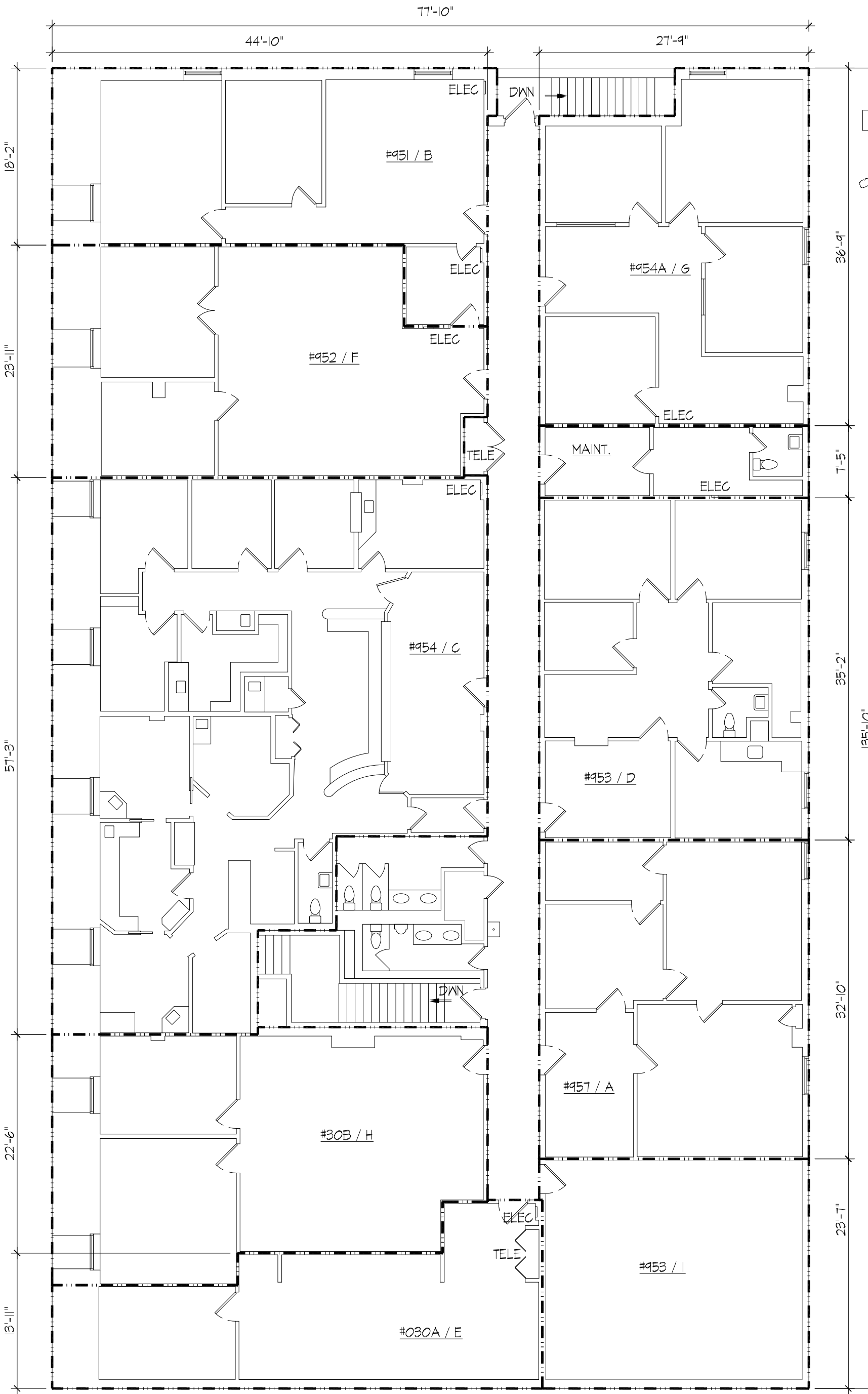
- Flexible lease terms
- Located in one of the premier neighborhood shopping centers with Safeway, CVS, Glory Days with other food options
- Near intersection of Lee Chapel Rd and Old Keene Mill Rd

For Leasing Information:

Steve Plott (703) 795-2505 steve.plott@metrores.com
Nate Adams (703) 926-5860 nathan.adams@metrores.com
Office (703) 451-3232

Metropolitan Real Estate Services, LLC
6205 Old Keene Mill Court, Suite 100
Springfield, VA 22152
www.metrores.com

We obtained the information above from sources we believe to be reliable. However, we have not verified its accuracy and make no guarantee, warranty or representation about it. It is submitted subject to the possibility of errors, omissions, change of price, rental or other conditions, prior sale, lease or financing, or withdrawal without notice. We include projections, opinions, assumptions or estimates for example only, and they may not represent current or future performance of the property. You and your tax and legal advisors should conduct your own investigation of the property and transaction.



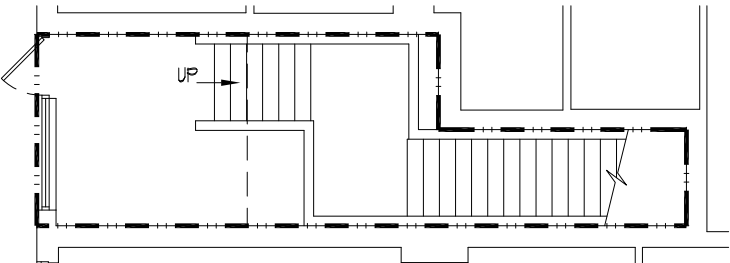
2nd FLOOR OFFICES #9554
Burke Town Plaza - Site 1039
 BURKE, VA

DATE: 11.14.13
 DRAWING: 04106
 SCALE: 1" = 20'
 SHT SIZE: 11x17

SITE PLAN

1039
BT-
#9554

#9554 PROF. OFFICES					
#957 / A	ACSSYS	845 SF RR	954A / G	VACANT	1080 SF RR
#951 / B	VACANT	845 SF RR	30B / H	VACANT	875 SF RR
#954 / C	BURKE DENTAL	1889 SF RR	#953 / I	MNT ASSOCIATES	624 SF RR
#953 / D	DR. FEISEE	945 SF RR		MAINTENANCE	206 SF
#030A / E	JACKSON HEWITT	650 SF RR		COMMON AREA	1083 SF
#952 / F	P.M.H.A.	845 SF RR		COMMON; 1st FLOOR	273 SF



ADT'23
13,993

Lee Chapel Road

Old Keene Mill Road

ADT'23
23,576

N
11/14/23



SAFeway

CVS pharmacy

1 2 3 4 5 6 9 10 11

McDonald's

33

NAVY FEDERAL
Credit Union



12
13
14
15
16
17
18
19
20
21
22
23
25
26
27
28
29
30

Second Floor

34 38
37 36
8 39
7 40



THE JOINT
chiropractic



Torrence Street