

FOR LEASE

14241 E. Firestone Blvd, La Mirada, Ca

OFFICE SPACE

Prime Central Location between OC and LA Counties

- 4 Story Class A Building with Direct Exposure to I-5 Fwy.
- Easy Access to 91, 105, 710 and 605 Freeways via the I-5 Fwy.
- Building Signage Available.
- Walking distance to Restaurants, Hotel Amenities, Banks.
- FREE Parking.



WE KNOW WHAT MATTERS

Commercial Real Estate Services Since 1987

Massy Farzine

714.343.9888

Mfarzine@esdicorp.com



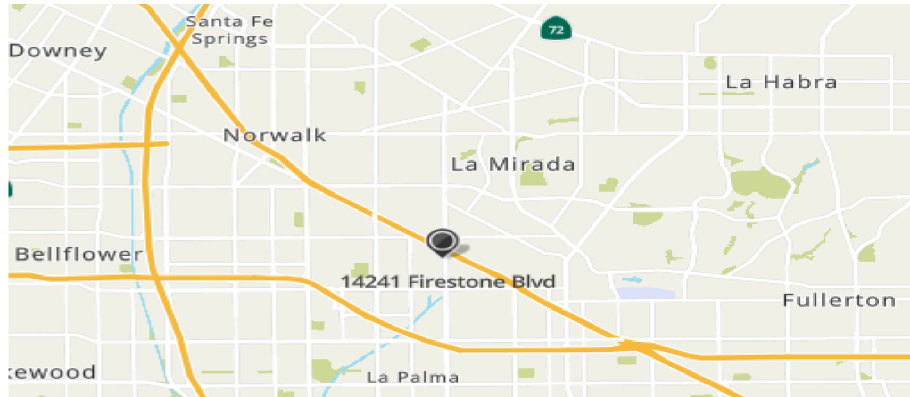
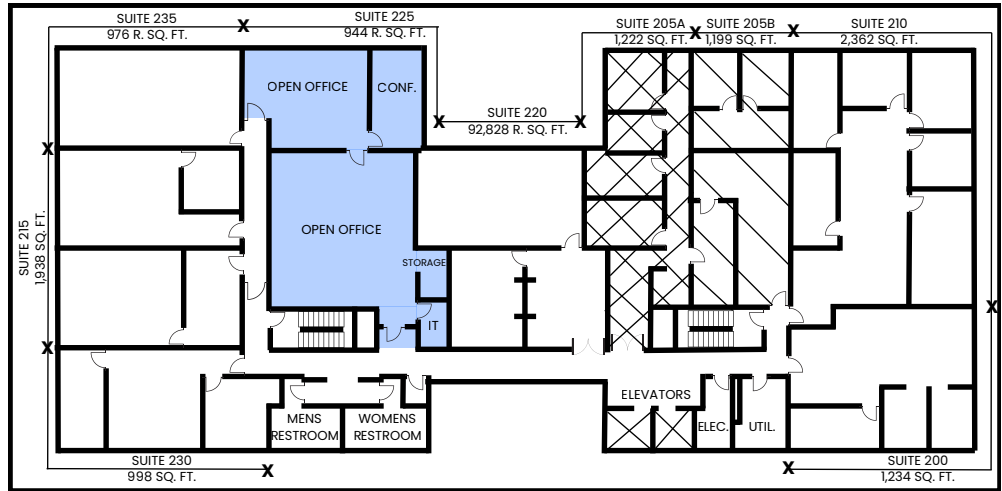
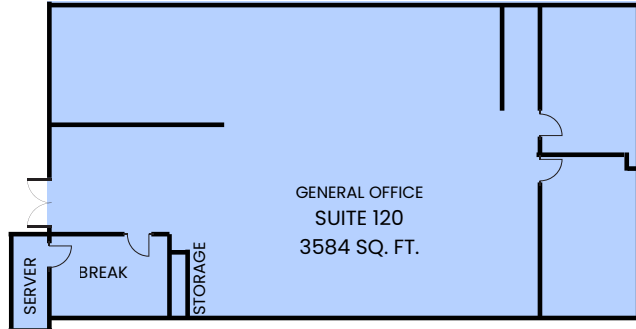
To schedule a tour, please call 714.343.9888

No warranty or representation, expressed or implied, is made as to the accuracy of the information contained herein, and is submitted subject to errors, omissions, change of price, rental or other conditions, withdrawal without notice, and to any listing conditions imposed by our principals.

14241 E. Firestone Blvd, La Mirada, Ca

Suite 120 **3,584 SF**
 2 private offices, large open area and breakroom, located off the main lobby
\$2.75/sf FSG

Suite 225 **2,257 SF**
 Large open area, window office, Storage room.
\$2.55/sf FSG



To schedule a tour, please call 714.343.9888

No warranty or representation, expressed or implied, is made as to the accuracy of the information contained herein, and is submitted subject to errors, omissions, change of price, rental or other conditions, withdrawal without notice, and to any listing conditions imposed by our principals.