

# Bridgeview Technology Park

24590 CLAWITER ROAD, HAYWARD, CA  
±52,946 SF

Perfectly located in the  
East Bay's home of biotechnology and  
high-tech companies



# About Bridgeview Technology Park

This multi-tenant campus consists of three buildings comprising 252,000 square feet, featuring laboratory, cGMP manufacturing and office space.

Easy access to Highway 92 and I-880

Close proximity to the San Francisco, Oakland, and San Jose airports

Access to multiple BART stations (Hayward and South Hayward) and Amtrak station

Nearby major biotech research institutions including UC Berkeley, Stanford University, and UC San Francisco



**±52,946 SF**

TOTAL  
SQUARE FEET



**3**

BUILDING  
CAMPUS



**Class A**

LAB / OFFICE /  
WAREHOUSE  
BUILDINGS



**LOBBY**



**OPEN OFFICE**



**BIOLOGY LAB**



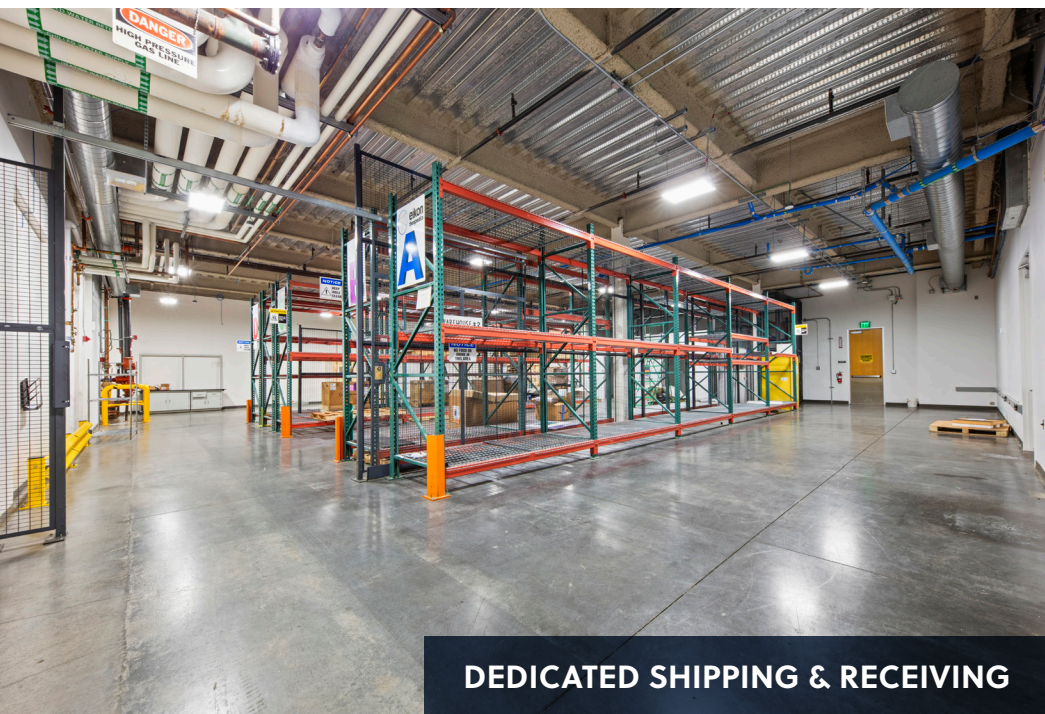
**ISO 8 CLEAN ROOM**



**ALL HANDS AREA**



**GAME ROOM**



**DEDICATED SHIPPING & RECEIVING**



**AUTOCLAVE & GLASSWASH, SCULLERY SINK, ICE MACHINE**

# 24590 Clawiter Rd



**Level I**  
**±26,473**  
RENTABLE SQUARE FEET

Power: 2,500 Amps @ 277/480V, 3-phase

500 kW backup generator

ISO 8 clean room

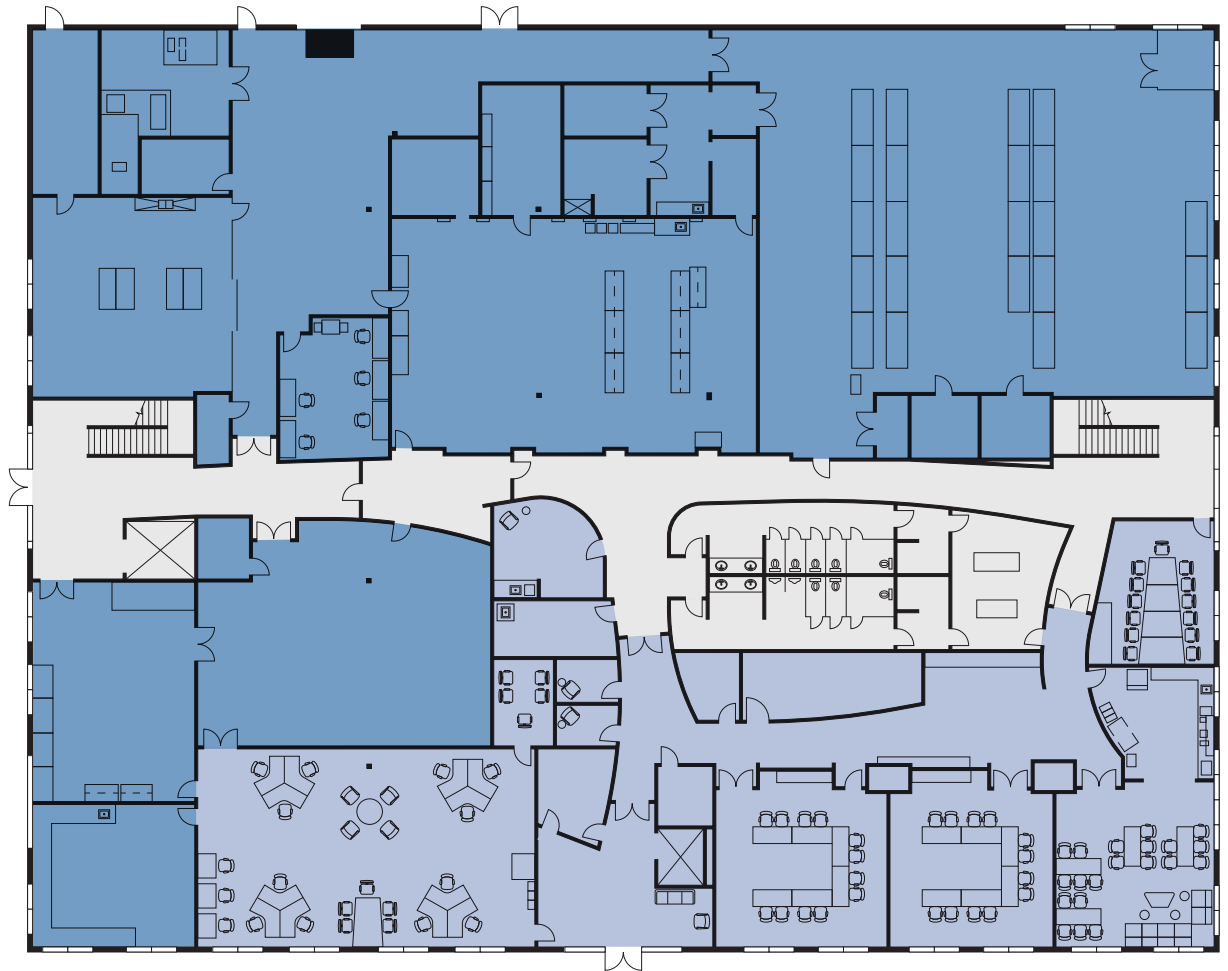
House utilities: CDA, VAC, RO/DI

Large break area

Yoga room

All hands area

AMENITIES    LAB / LAB SUPPORT    BUILDING SUPPORT/COMMON AREA



# 24590 Clawiter Rd

OFFICE LAB BUILDING SUPPORT



**Level 2**  
**±26,473**  
RENTABLE SQUARE FEET

Fully furnished office space

Biology labs with fume hoods

Glasswash & Autoclave

Break area

Freight elevator serviced



# Fully Connected

**33** MILES TO  
SAN FRANCISCO

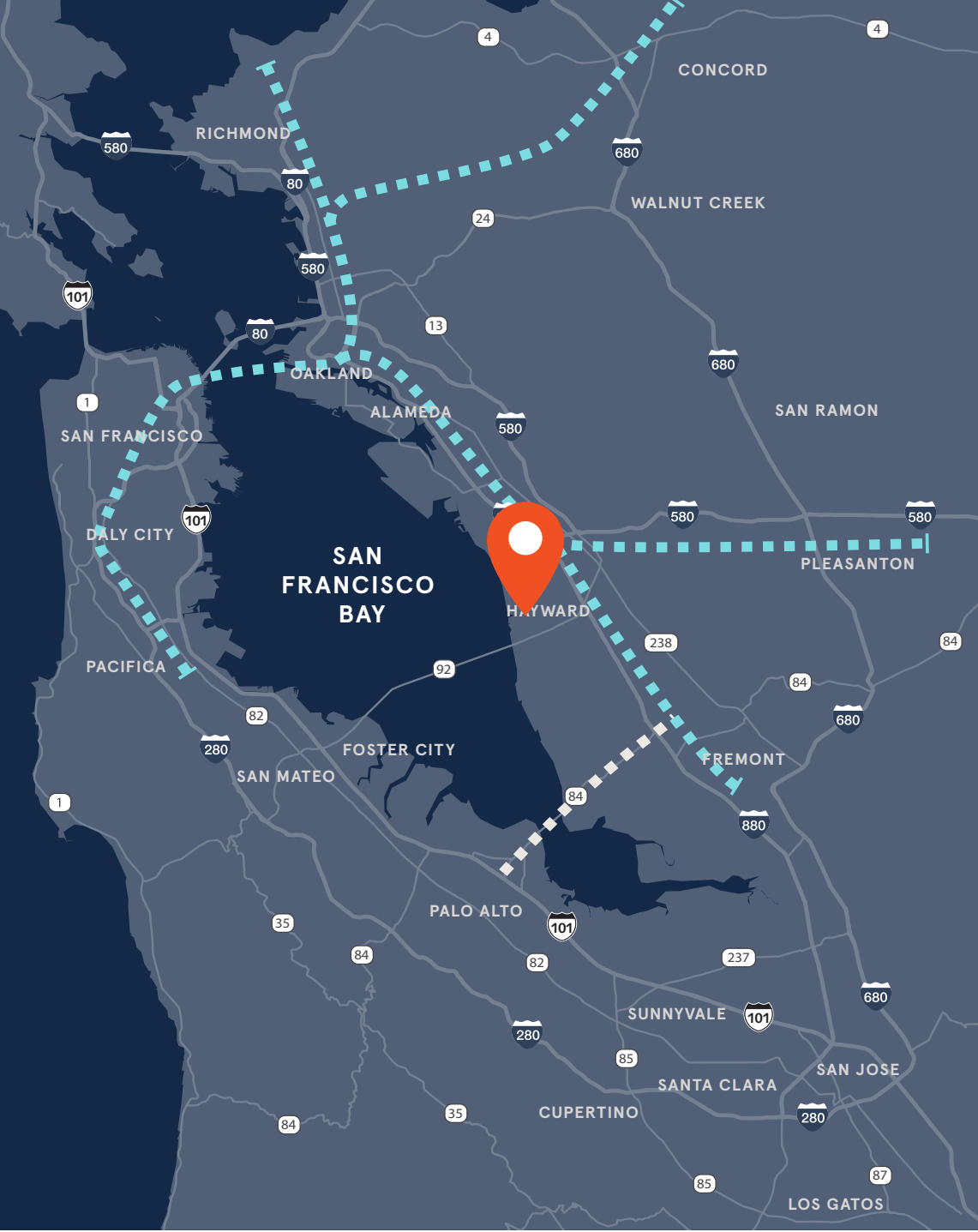
**16** MILES TO  
SAN MATEO

**34** MILES TO  
SUNNYVALE

**32** MILES TO  
MOUNTAIN VIEW

**25** MILES TO  
S SAN FRANCISCO

**41** MILES TO  
SAN JOSE



# Bridgeview Technology Park

CLAWITER ROAD & INDUSTRIAL ROAD, HAYWARD, CA

## FOR LEASING INFORMATION CONTACT

GREGG DOMANICO  
CBRE  
415.215.5218  
gregg.domanico@cbre.com  
LIC N° 00996779

MICHAEL DOMANICO  
CBRE  
650.430.1464  
michael.domanico@cbre.com  
LIC N° 01944774

GIO HAUGHTON  
CBRE  
650.387.1197  
gio.haughton@cbre.com  
LIC N° 02107010

A  BioMed Realty property

**CBRE**