

20250 SW ACACIA STREET ACACIA ATRIUM

NEWPORT BEACH • CA • 92660

±1,112 SF - ±1,125 SF OF OFFICE SPACE FOR LEASE





Prominent Location in the Heart of Newport Beach



Free Surface & Covered Parking



Ideal Proximity to John Wayne Airport and 55 & 73 Fwys



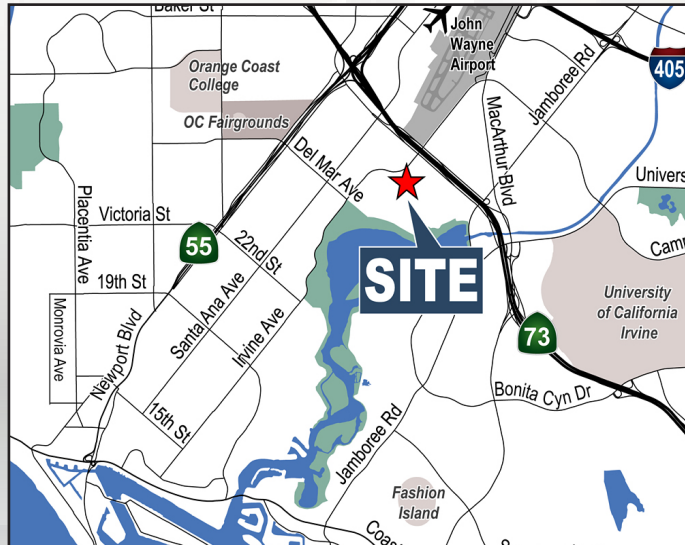
Feng Shui Designed Class B Office Building



Walking Distance to Numerous Retail Amenities & Newport Beach Golf Club



Ownership & Property Management



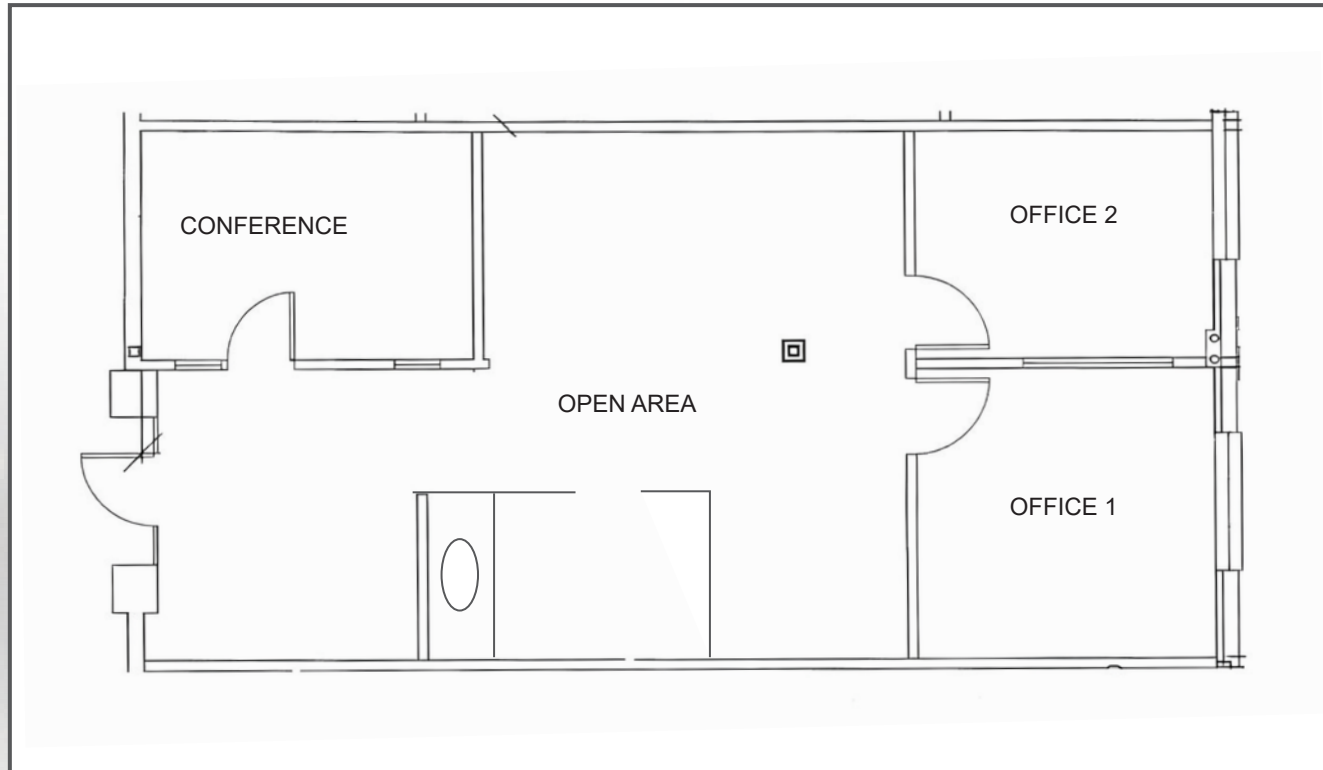
CARTER HARRINGTON
Lic. #01762924
949.724.4710
charrington@lee-associates.com

LEE & ASSOCIATES
COMMERCIAL REAL ESTATE SERVICES
NEWPORT BEACH

SUITE 125 - ±1,112 SF

Availabilities

RSF	Suite	Description	Available	Rate/SF
± 1,112 RSF	125	Tenant will vacate premises on 3/31/26 : Conference room, two window offices, open area, kitchen with a sink.	4/15/26	\$2.95 FSG



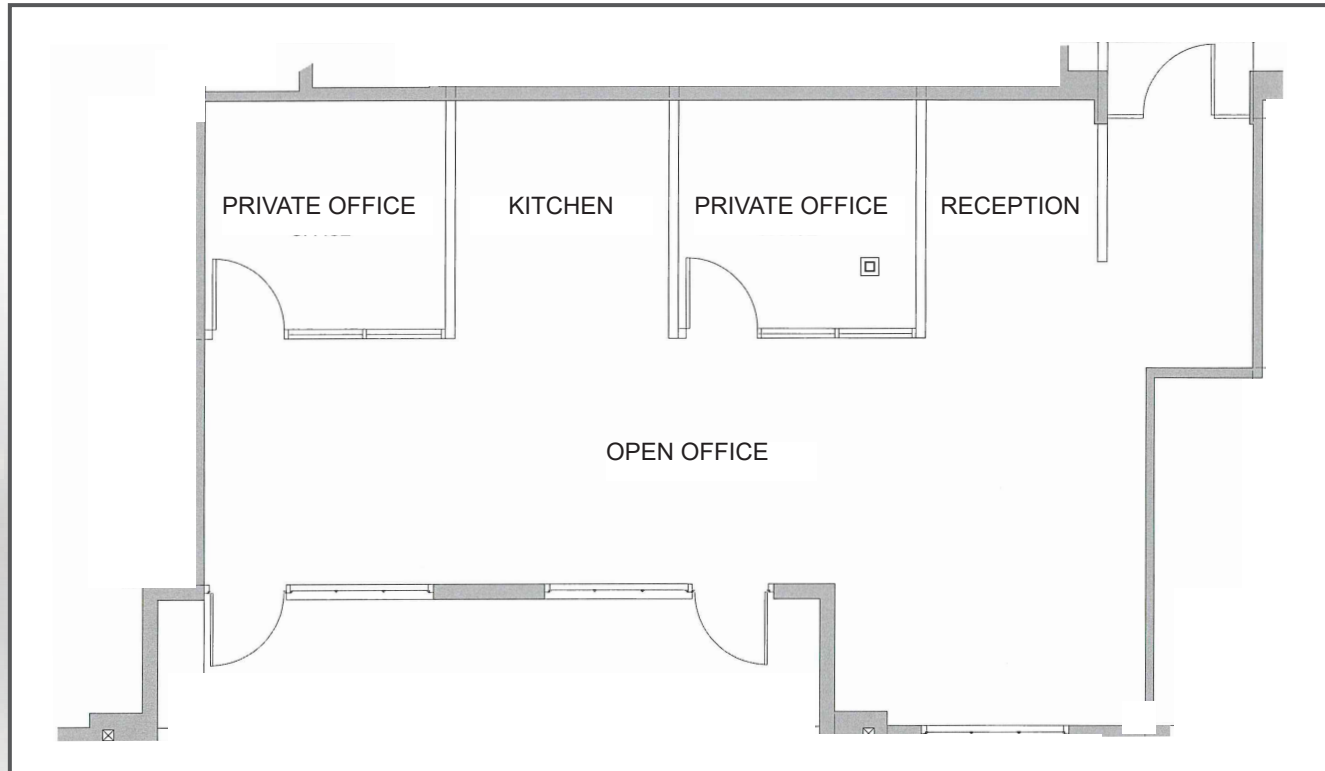
CARTER HARRINGTON
 Lic. #01762924
 949.724.4710
 charrington@lee-associates.com

LEE & ASSOCIATES
 COMMERCIAL REAL ESTATE SERVICES
 NEWPORT BEACH

SUITE 245 - ±1,125 SF

Availabilities

RSF	Suite	Description	Available	Rate/SF
± 1,125 RSF	245	Under construction : 2 private offices, balcony, kitchen with sink, reception area.	3/15/26 - 4/1/26	\$2.95 FSG



CARTER HARRINGTON
 Lic. #01762924
 949.724.4710
 charrington@lee-associates.com

LEE & ASSOCIATES
 COMMERCIAL REAL ESTATE SERVICES
 NEWPORT BEACH

20250 SW ACACIA STREET ACACIA ATRIUM

NEWPORT BEACH • CA • 92660

±1,112 SF - ±1,125 SF OF OFFICE SPACE FOR LEASE

FOR MORE INFORMATION. CONTACT:

CARTER HARRINGTON

Lic. #01762924

949.724.4710

charrington@lee-associates.com

 **LEE &
ASSOCIATES**
COMMERCIAL REAL ESTATE SERVICES
NEWPORT BEACH

The information contained herein has been obtained from the property owner or other third party and is provided to you without verification as to accuracy. We (Lee & Associates, its brokers, employees, agents, principals, officers, directors and affiliates) make no warranty or representation regarding the information, property, or transaction. You and your attorneys, advisors and consultants should conduct your own investigation of the property and transaction.