



OPES COMMERCIAL REAL ESTATE



**13949 M 350 Highway
Kansas City, Missouri 64139**

**FOR SALE
\$225,000**

NATE PRATHER

SENIOR VICE PRESIDENT

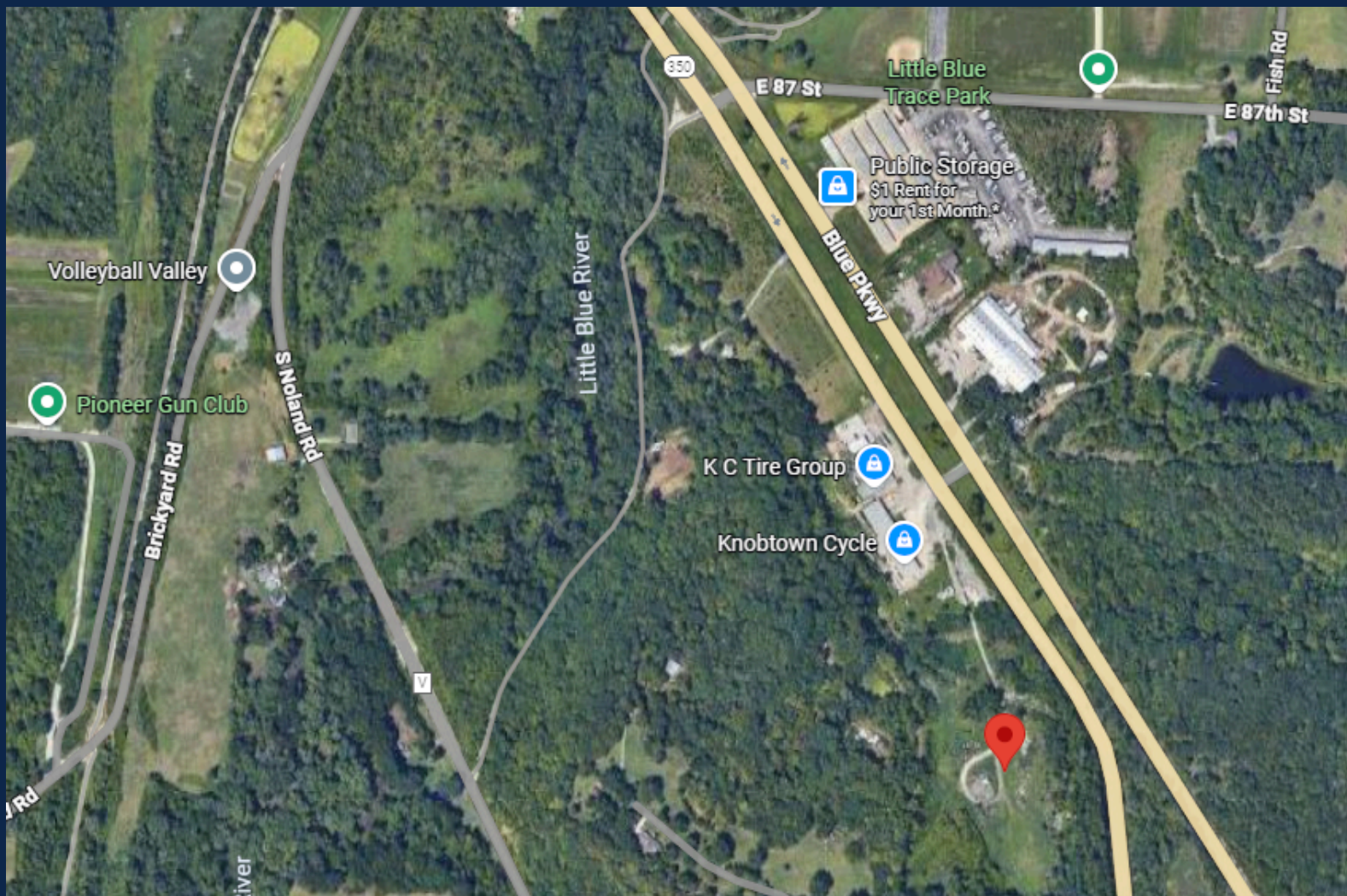
816-268-4483

NTPRATHER@OPESCRE.COM

Although every reasonable effort is made to present current and accurate information, Opes Commercial Real Estate makes no guarantees of any kind

PROPERTY FEATURES:

- Excellent opportunity for land in Kansas City, Missouri
- 13.09 +/- acres for sale
- Excellent access to and from 350 Highway
- Zoned R-80 - some commercial uses are permitted
- More than 20,000 cars per day on 350 Highway



NATE PRATHER
SENIOR VICE PRESIDENT
816-268-4483
NTPRATHER@OPESCRE.COM