

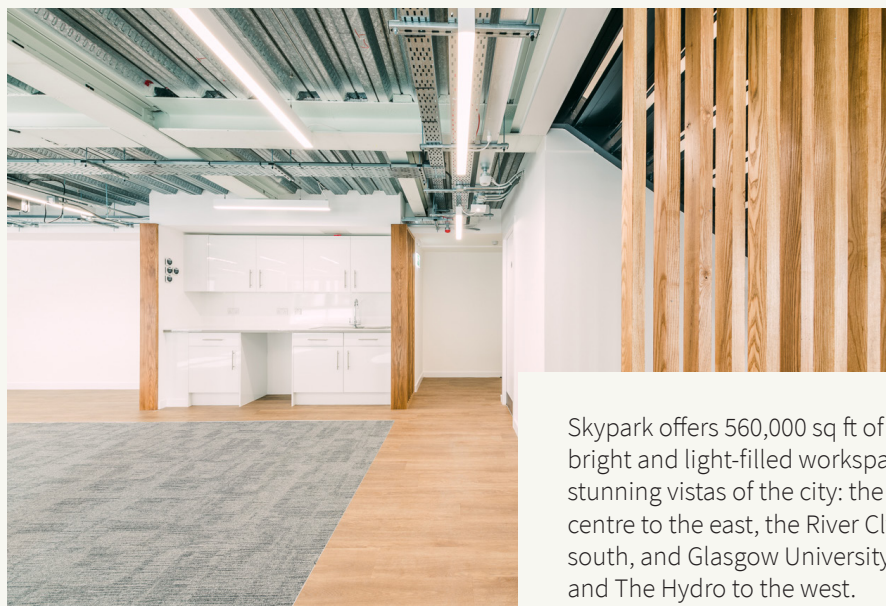
Skypark.

**SKYPARK 2**

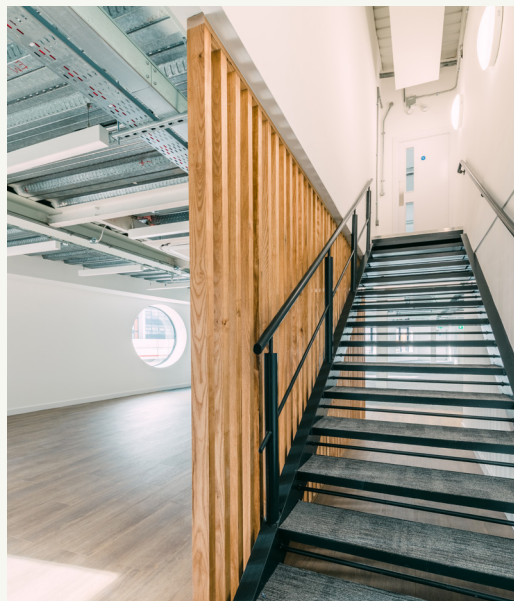
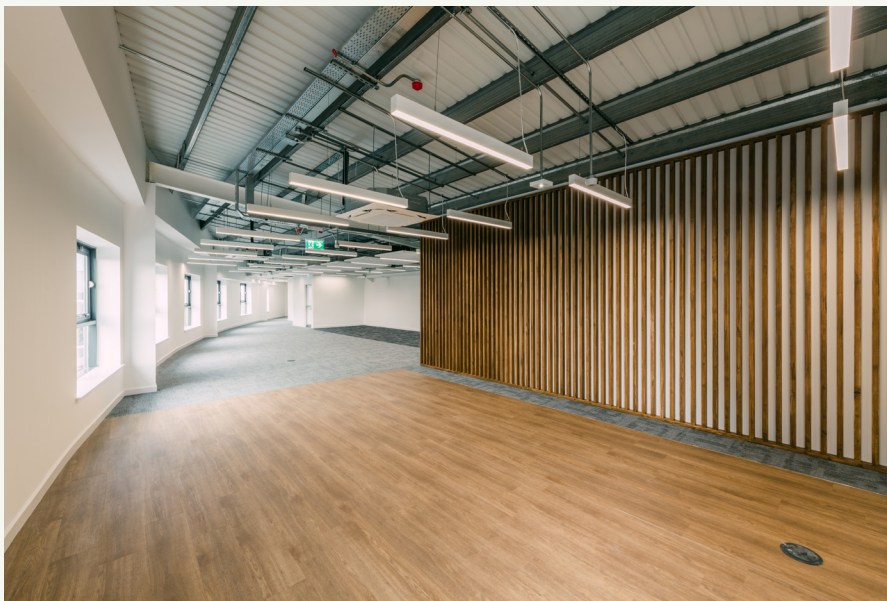


The light, the views, the location. Sparkling in the Glasgow skyline, Skypark is a true Glasgow landmark and an inspiring setting for business.

[www.skypark-glasgow.com](http://www.skypark-glasgow.com)



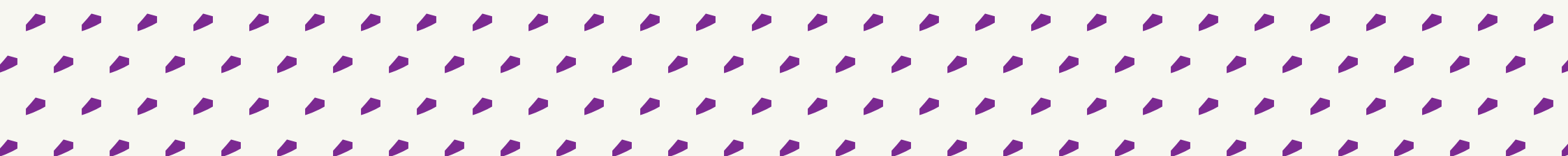
Skypark offers 560,000 sq ft of contemporary, bright and light-filled workspace, with stunning vistas of the city: the vibrant city centre to the east, the River Clyde to the south, and Glasgow University, the Trossachs and The Hydro to the west.



With everything from whole floors with 360-degree views, to high quality suites and managed workspace, we can offer businesses of all kinds and sizes a brilliant new home.

*Key features:*

- 24 hour access and security
- Monitored CCTV
- On-site management team support
- Dedicated car parking
- Free visitor parking
- Fast rail, bus and road connections
- Cycle facilities
- Data and power resilience capability
- Cafe
- Children's nursery
- On-site social community



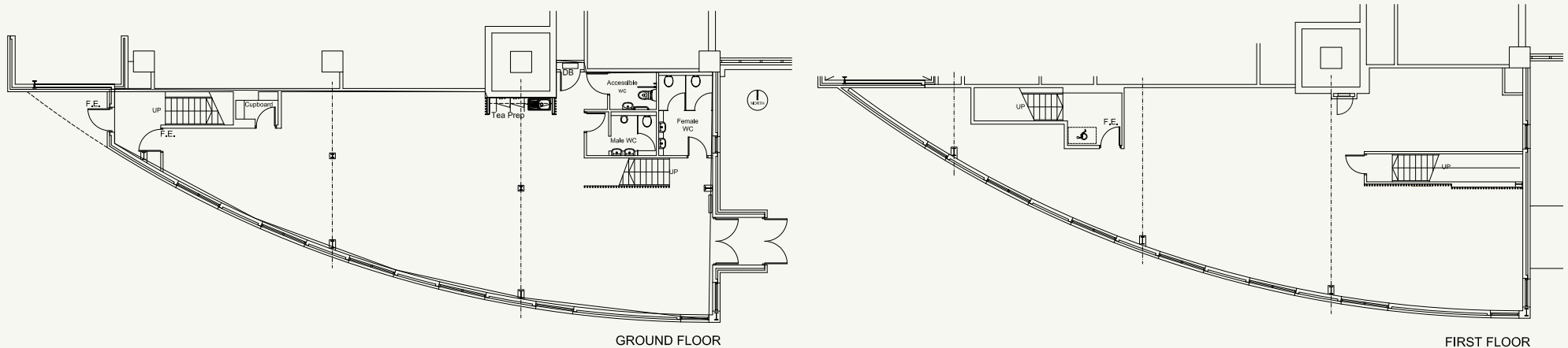
# SKYPARK 2

**12 ELLIOT PLACE**  
**3,456 SQ FT**  
**321.07 SQ M**

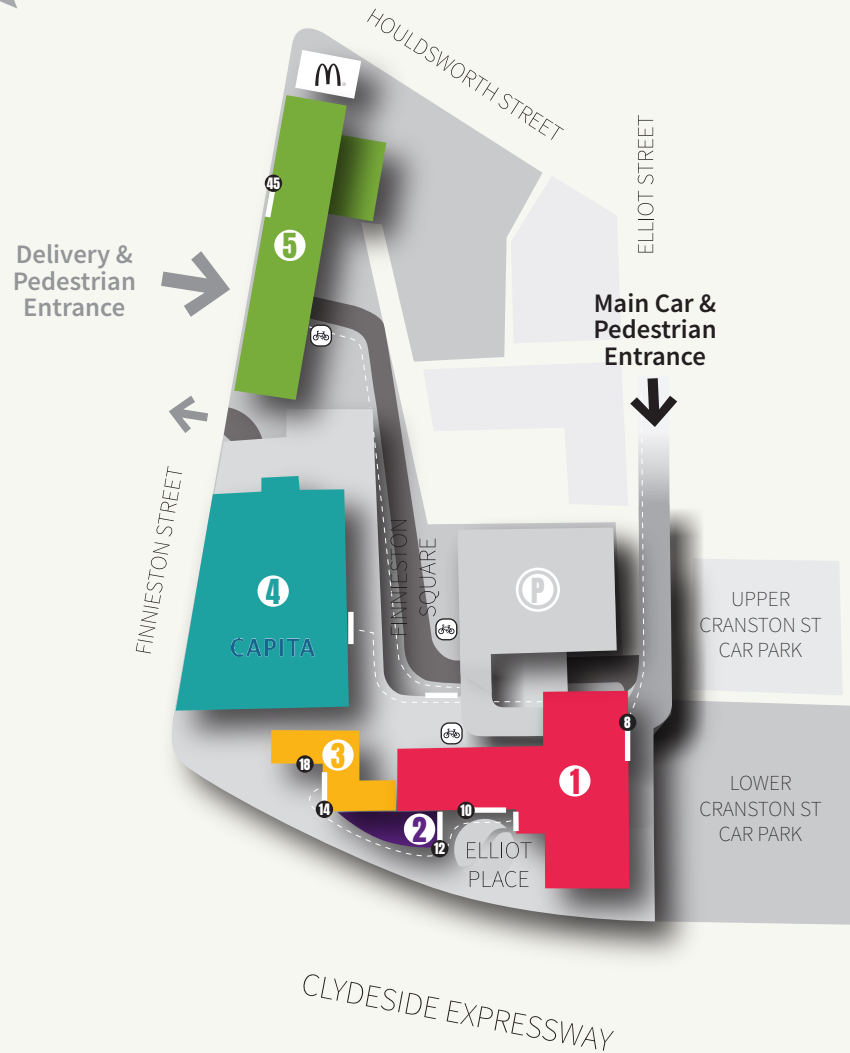
Rent: £69,500 per annum  
Rateable Value: £42,250  
Service Charge: £13,022.42 per annum

Skypark 2 is a stand-alone building, split over two levels. Providing views of the south and west towards the River Clyde, access is via ground floor by our garden breakout area. The suite is provided open plan in line with the following specification:

- Open plan layout
- Inter-connecting internal staircase
- VRV air conditioning
- Raised access floor
- Raft/exposed ceiling finish TBC
- LED lighting
- Carpet tiled floor finish
- Tea prep facility
- Dedicated male and female toilets
- EPC Rating B



# Skypark.



**KEY**

- Building Number
- Street Address
- Building Entrance
- Ⓟ Visitor Car Parking
- 🚲 Cycle Parking
- - - Pedestrian Access

---

- 10 Bright Horizons Nursery

**GET IN TOUCH**

Ken McInnes  
 0141 270 3136  
[ken.mcinnnes@ryden.co.uk](mailto:ken.mcinnnes@ryden.co.uk)

Tim Jacobsen  
 0141 270 3170  
[tim.jacobsen@ryden.co.uk](mailto:tim.jacobsen@ryden.co.uk)

# Ryden

Ryden LLP give notice to anyone who may read these particulars as follows: 1. Particulars: These particulars are not an offer or contract, nor part of one. You should not rely on statements by Ryden LLP in the particulars or by word of mouth or in writing ("information") as being factually accurate about the property, its condition or its value. Ryden LLP has any authority to make any representations about the property, and accordingly any information given is entirely without responsibility on the part of the agents, seller(s) or lessor(s). 2. Photos etc: The photographs show only certain parts of the property as they appeared at the time they were taken. Areas, measurements and distances given are approximate only. 3. Regulations etc: Any reference to alterations to, or use of, any part of the property does not mean that any necessary planning, building regulations or other consent has been obtained. A buyer or lessee must find out by inspection or in other ways that these matters have been properly dealt with and that all information is correct. 4. VAT: The VAT position relating to the property may change without notice. January 2021.