

Industrial Warehouse • Arch Road Business Park

2385

±12,966-27,330 SF FOR LEASE

ARCH AIRPORT ROAD

Stockton • California



Jones Lang LaSalle Brokerage, Inc., CA Real Estate License #01856260

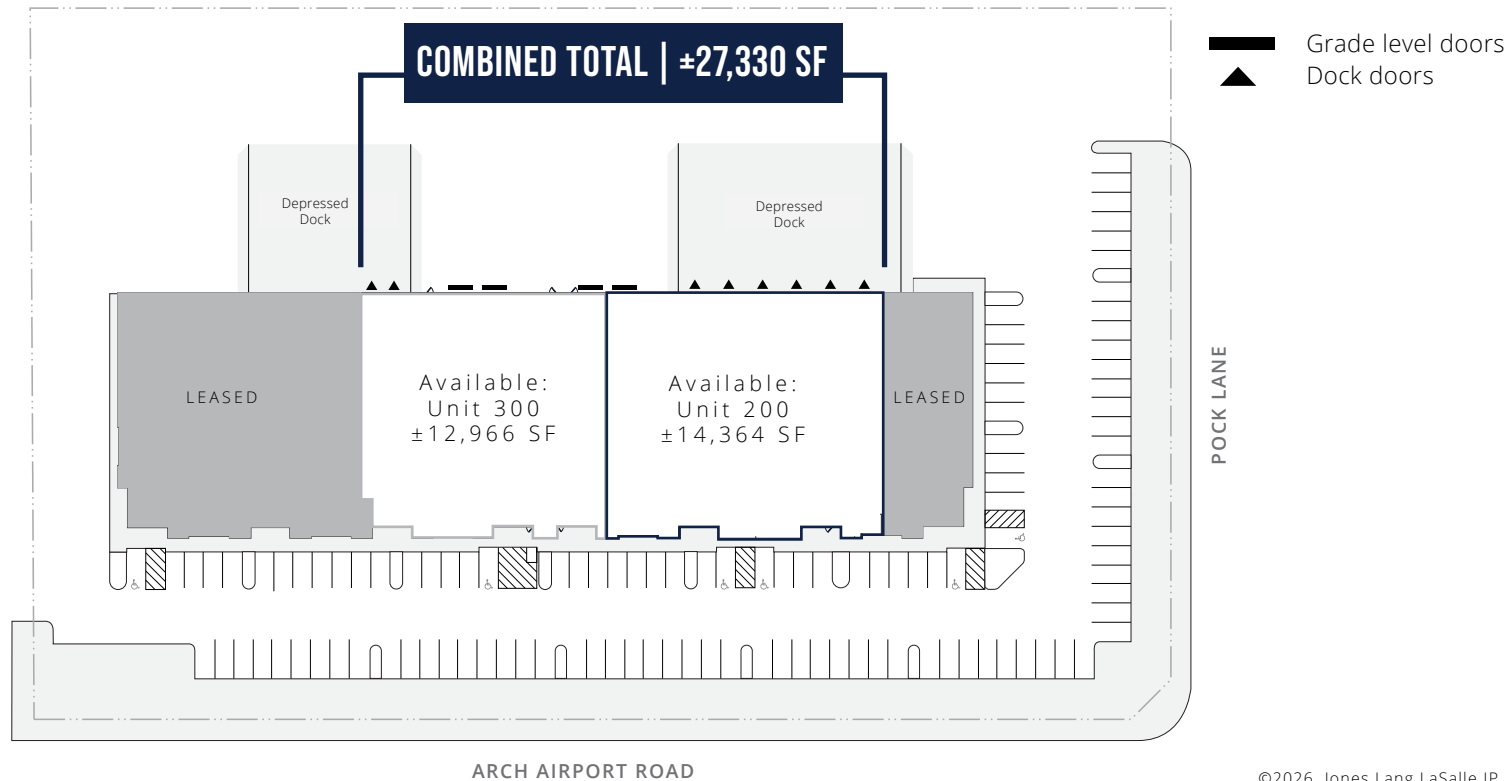
PROPERTY FEATURES



Available	Suite 200 ±14,364 SF
	±850 SF office
	6 dock doors
	1 grade level door
	<hr/>
	Suite 300 ±12,966 SF
	±4,500 SF office
	2 dock doors
	3 grade level doors
<hr/>	
	Combined Total: ±27,330 SF

Total Building Size	±45,486 SF
Lot Size	±4.06 AC
Power	400 amps (tenant to verify)
Clear Height	21'
Column Spacing	57' x 57'
Sprinklers	0.33 / 3,000
Zoning	I-G (City of Stockton)
Lease Rate	Contact broker

SITE PLAN



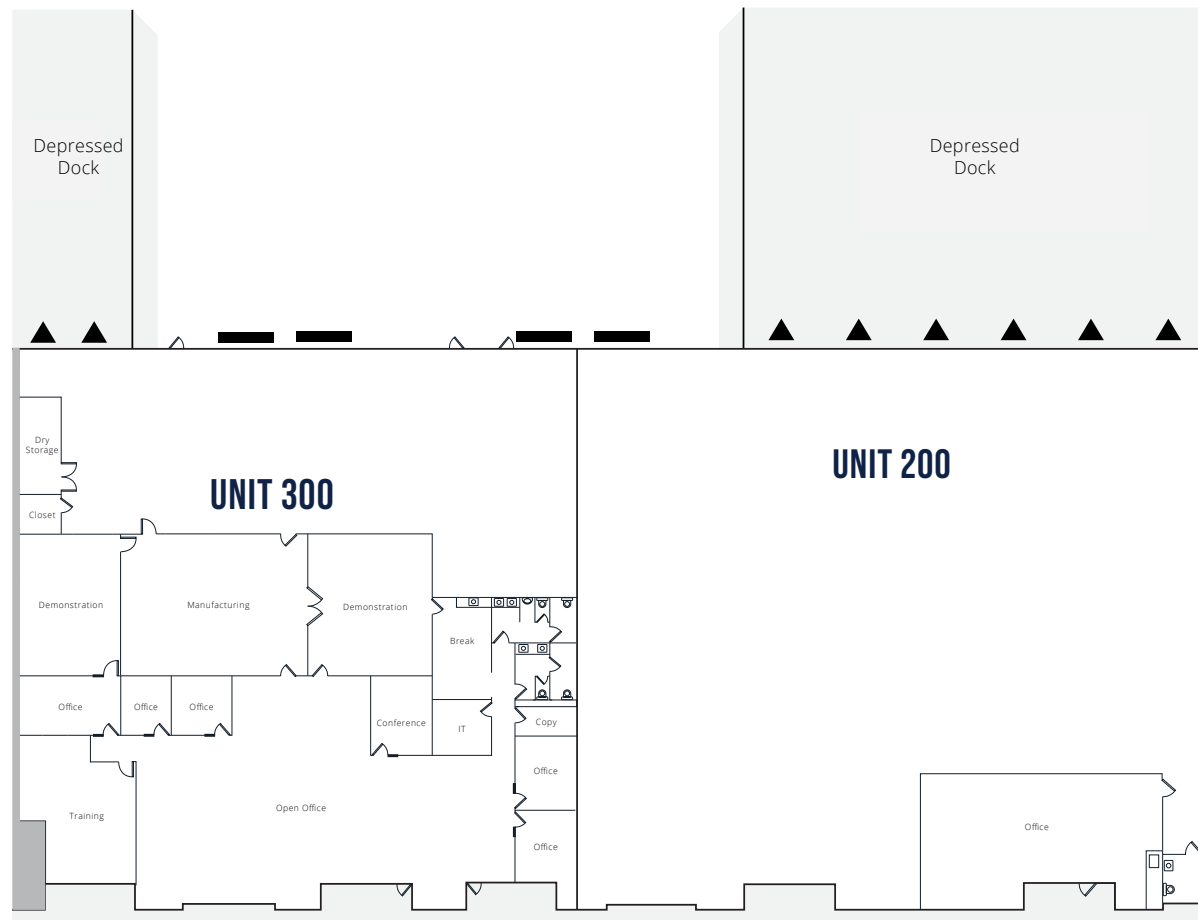
FLOOR PLANS



UNIT 300

±12,966 SF
 ±4,500 SF office
 2 dock doors
 3 grade level doors

▬ Grade level doors
 ▲ Dock doors



UNIT 200

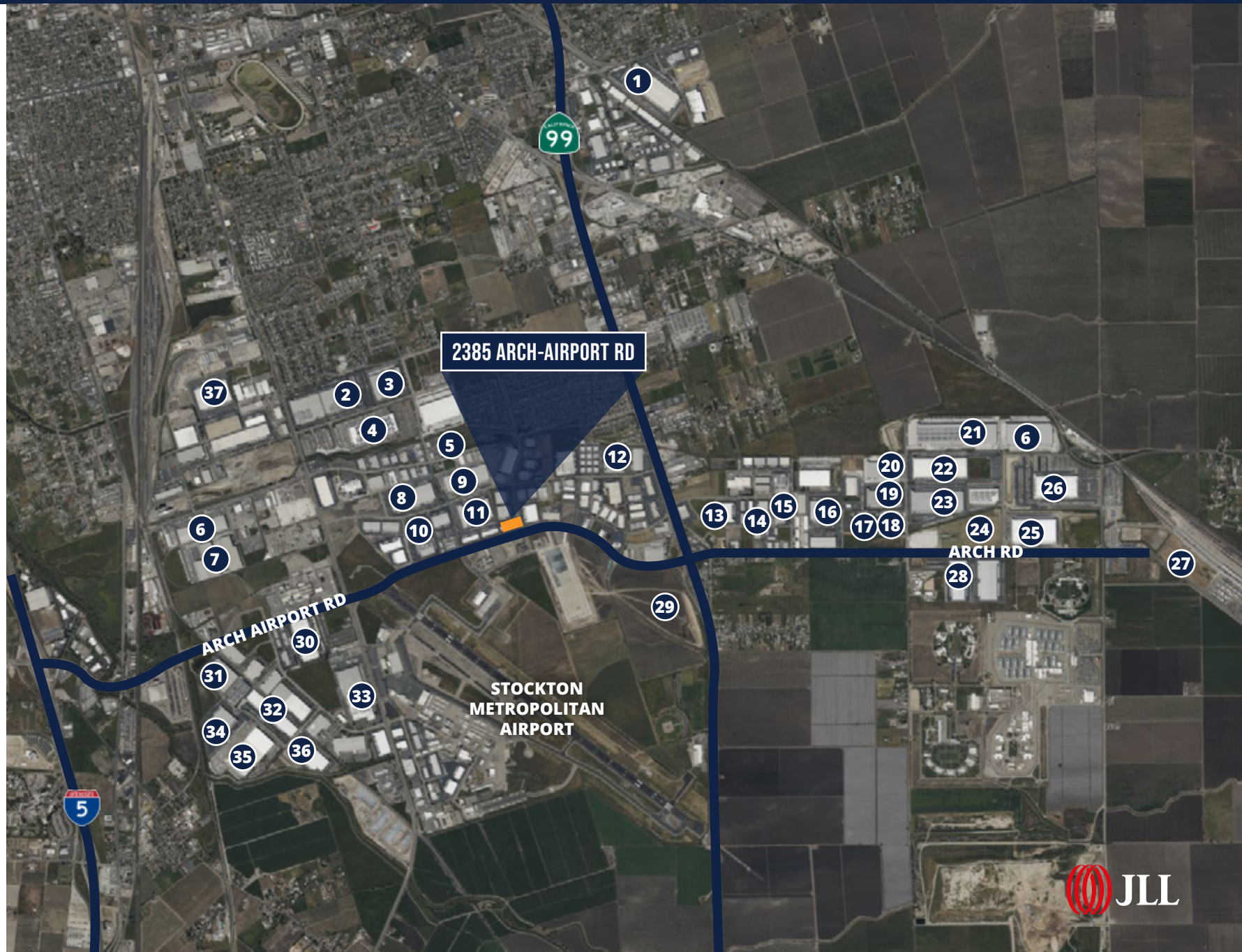
±14,364 SF
 ±850 SF office
 6 dock doors
 1 grade level door

*FLOOR PLANS NOT DRAWN TO SCALE

CORPORATE NEIGHBORS



- 1 Costco Wholesale
- 2 Cost Plus World Market
- 3 Cost Plus World Market
- 4 Amazon
- 5 Home Depot
- 6 Allen Distribution
- 7 C&S Wholesale Grocers
- 8 Raley's
- 9 Trader Joe's
- 10 Staples
- 11 Whirlpool
- 12 Lifestyle
- 13 Weber
- 14 International Paper
- 15 Southwest Traders
- 16 Pace Supply
- 17 Allen Distribution
- 18 Pitney Bowes
- 19 Fox
- 20 Amazon
- 21 Amazon
- 22 KeHe
- 23 General Mills
- 24 Niagara
- 25 Niagara
- 26 Amazon
- 27 BNSF
- 28 FedEx
- 29 Target
- 30 CPFD
- 31 BMW
- 32 Pactiv
- 33 Simpson StrongTie
- 34 Prism Logistics
- 35 Dollar Tree
- 36 Costco Wholesale
- 37 O'Reilly





2385
ARCH AIRPORT ROAD

EXCLUSIVE BROKERS

TIM MUSTIN
JLL | Managing Director
tim.mustin@jll.com
+1 209 390 1687
RE License #01857876

JOHN FONDALE, SIOR
JLL | Managing Director
john.fondale@jll.com
+1 209 390 1694
RE License #01017415

MICHAEL MATTER
JLL | Vice President
michael.matter@jll.com
+1 209 390 1702
RE License #01435801

JACK FONDALE
JLL | Associate
jack.fondale@jll.com
+1 916 390 3006
RE License #02250595

WALKER DURANT
Buzz Oates | Asset Manager
walkerdurant@buzzoates.com
+1 916 379 3814
RE License #02182849

Although information has been obtained from sources deemed reliable, neither Owner nor JLL makes any guarantees, warranties or representations, express or implied, as to the completeness or accuracy as to the information contained herein. Any projections, opinions, assumptions or estimates used are for example only. There may be differences between projected and actual results, and those differences may be material. The Property may be withdrawn without notice. Neither Owner nor JLL accepts any liability for any loss or damage suffered by any party resulting from reliance on this information. If the recipient of this information has signed a confidentiality agreement regarding this matter, this information is subject to the terms of that agreement. ©2026. Jones Lang LaSalle IP, Inc. All rights reserved.

