

# 1,208± SF Renovated First Floor Office Unit For Lease

Situated Off The Alameda With Quick Access To Hwy 880

1130-1132 McKendrie Street, San Jose



**KEON VOSSOUGH**  
Vice President  
Lic. #01019117  
408.691.9776  
keon@moinc.net

**BOBBY FACCHINO**  
Senior Associate  
Lic. #02178873  
408.318.0623  
bobby@moinc.net

MEACHAM/OPPENHEIMER, INC.  
8 N San Pedro St. #300  
San Jose, CA 95110  
408.378.5900  
[www.moinc.net](http://www.moinc.net)

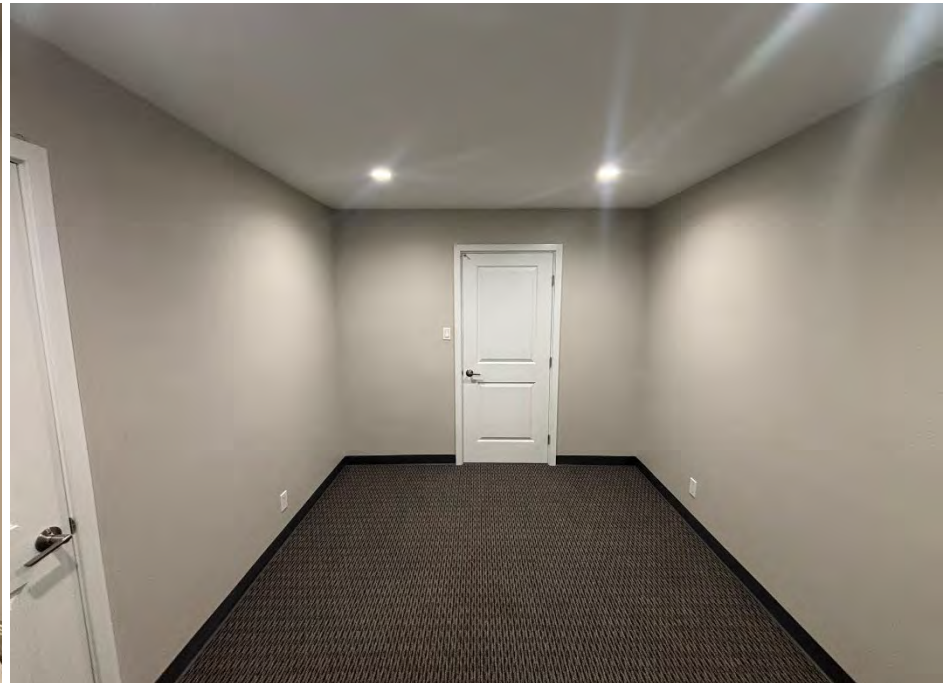


# Renovated 1<sup>st</sup> Floor Office Unit For Lease

## 1130-1132 McKendrie Street, San Jose

- Located Right Near HWY 880
- Parking in Rear Of The Building
- Front Door & Back Door Access
- 1st Floor Office Space
- Unit A: 1,208± SF | Rent: \$3,500/Month Modified Gross
- Tenant Responsible for PG&E & Water bill
- Recently Renovated Bathroom & Kitchen Area
- Kitchen has a Brand-New Gas Stove
- Bathroom has a Brand-New Shower

# 1<sup>st</sup> Floor Unit A: 1,208± SF



# 1<sup>st</sup> Floor: Updated Kitchen & Bathroom



# 1<sup>st</sup> Floor: Updated Kitchen & Bathroom



# Exterior Photos





INTERSTATE  
CALIFORNIA  
880

82

1130-1132  
McKendrie St

The Alameda

82

# Demographics



<b>2026 SUMMARY</b>	<b>1-MILE</b>	<b>3-MILE</b>	<b>5-MILE</b>
<b>Population</b>	21,699	231,384	660,340
<b>Households</b>	7,182	88,887	240,378
<b>Average Household Size</b>	2.51	2.45	2.67
<b>Owner Occupied Housing Units</b>	3,030	30,533	95,453
<b>Renter Occupied Housing Units</b>	4,152	58,344	144,925
<b>Median Age</b>	33.2	36.3	36.9
<b>Median Household Income</b>	\$145,875	\$131,633	\$147,929
<b>Average Household Income</b>	\$199,214	\$181,244	\$199,939

# 1130-1132 McKendrie Street, San Jose



**KEON VOSSOUGH**

Vice President  
Lic. #01019117  
408.691.9776  
keon@moinc.net

**BOBBY FACCHINO**

Senior Associate  
Lic. #02178873  
408.318.0623  
bobby@moinc.net

MEACHAM/OPPENHEIMER, INC.  
8 N San Pedro St. #300  
San Jose, CA 95110  
Tel. 408.378.5900  
[www.moinc.net](http://www.moinc.net)

