

# NOW LEASING

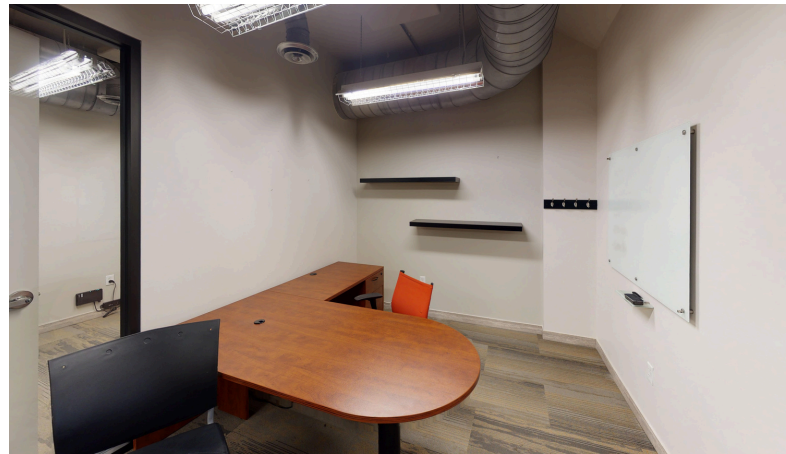
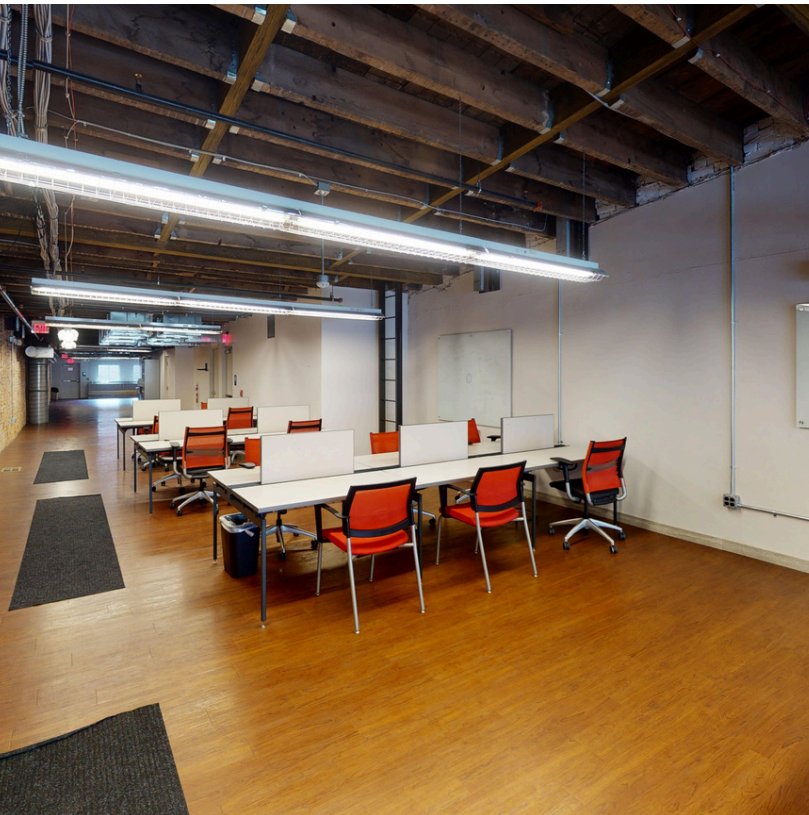
## 806 HAMILTON STREET

DOWNTOWN ALLENTOWN, PA



## 2,300 - 5,000 SF OFFICE SPACE AVAILABLE

- OVER 1 MILLION VISITORS DOWNTOWN BY 2024
- FLEXIBLE LEASE TERMS
- COMPETITIVE RATES
- TURNKEY & FURNISHED SPACE
- 1,000 SPACE ADJACENT PARKING



### AT CITY CENTER, YOU ARE MORE THAN A TENANT, YOU ARE PART OF A COMMUNITY.

Located in the center of a bustling community, our spaces are surrounded by a diverse mix of people who are passionate about their local community. Tower 6 is a platform for businesses to elevate their brand, foster a high energy environment, attract and retain talented employees, while being at the center of a highly collaborative business environment to ultimately grow the bottom line. Contact us to schedule a tour and see the space for yourself.

**SCHEDULE  
A TOUR**

**MEGAN COLON**  
MCOLON@CITYCENTERGRP.COM  
610.625.5538

**JILL WHEELER**  
JWHEELER@CITYCENTERGRP.COM  
610.625.5533

FOLLOW THE PROJECT



# NOW LEASING

## 806 HAMILTON STREET

DOWNTOWN ALLENTOWN, PA



## 2,300 - 5,000 SF OFFICE SPACE AVAILABLE

- OVER 1 MILLION VISITORS DOWNTOWN BY 2024
- FLEXIBLE LEASE TERMS
- COMPETITIVE RATES
- TURNKEY & FURNISHED SPACE
- 1,000 SPACE ADJACENT PARKING



### AT CITY CENTER, YOU ARE MORE THAN A TENANT, YOU ARE PART OF A COMMUNITY.

Located in the center of a bustling community, our spaces are surrounded by a diverse mix of people who are passionate about their local community. Tower 6 is a platform for businesses to elevate their brand, foster a high energy environment, attract and retain talented employees, while being at the center of a highly collaborative business environment to ultimately grow the bottom line. Contact us to schedule a tour and see the space for yourself.

**SCHEDULE  
A TOUR**

**MEGAN COLON**  
MCOLON@CITYCENTERGRP.COM  
610.625.5538

**JILL WHEELER**  
JWHEELER@CITYCENTERGRP.COM  
610.625.5533

FOLLOW THE PROJECT



# NOW LEASING

## 806 HAMILTON STREET

DOWNTOWN ALLENTOWN, PA



# CITY CENTER GROUP



**SCHEDULE  
A TOUR**

**MEGAN COLON**  
MCOLON@CITYCENTERGRP.COM  
610.625.5538

**JILL WHEELER**  
JWHEELER@CITYCENTERGRP.COM  
610.625.5533

FOLLOW THE PROJECT

