



Keegan & Coppin
COMPANY, INC.

FOR LEASE

789 LOMBARDI COURT
SANTA ROSA, CA

INDUSTRIAL SPACE IN
SANTA ROSA



Go beyond broker.

REPRESENTED BY:

PETER BRICEÑO, SREA
LIC # 01885655 (707) 528-1400, EXT 255
PBRICENO@KEEGANCOPPIN.COM

SHAWN JOHNSON,
MANAGING PARTNER / SIOR
LIC # 00835502 (707) 528-1400, EXT 238
SJOHNSON@KEEGANCOPPIN.COM



789 LOMBARDI COURT
SUITES 201/206/207
SANTA ROSA, CA



**INDUSTRIAL
SPACE FOR
LEASE**

PROPERTY DETAILS

PROPERTY INFORMATION

HIGHLIGHTS

- Close proximity to shopping and amenities
- Well-maintained common area
- Owner will consider long -term leases
- High Quality Small Office and Breakroom
- Private Restroom

LEASE TERMS

Rate

Negotiable

Terms

3-5 year lease terms.

Total Building SF

11,520+/- sf

Description of Location - Area

This space is located in a business park in the southwest corridor of Santa Rosa, adjacent to Corporate Center Parkway Business Park and new restaurants and retail shopping centers. There is easy freeway access to Hwy 12 and only minutes from downtown Santa Rosa.

Zoning

IL

User Space

Office Use

SPACE

Suite 202/203: 2,520+/- SQFT Office

DESCRIPTION

Professional office and reception area supported by a warehouse. Includes private restroom and small conference/work area.

PRESENTED BY:

PETER BRICEÑO, SREA
LIC # 01885655 (707) 528-1400, EXT 255
PBRICENO@KEEGANCOPPIN.COM

SHAWN JOHNSON, MANAGING PARTNER / SIOR
LIC # 00835502 (707) 528-1400, EXT 238
SJOHNSON@KEEGANCOPPIN.COM

The above information, while not guaranteed, has been secured from sources we believe to be reliable. Submitted subject to error, change or withdrawal. An interested party should verify the status of the property and the information herein.



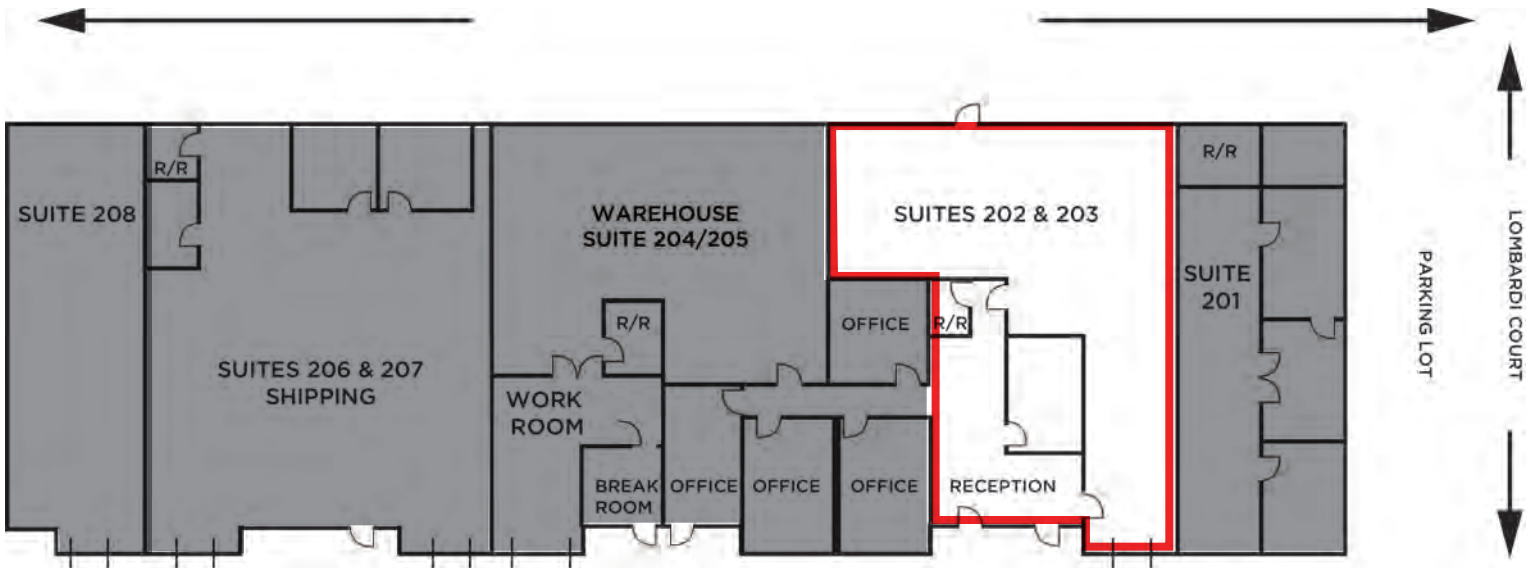
Keegan & Coppin
COMPANY, INC.



789 LOMBARDI COURT
SUITES 201/206/207
SANTA ROSA, CA

**INDUSTRIAL
SPACE FOR
LEASE**

FLOOR PLAN



AVAILABLE

NOT AVAILABLE

PRESENTED BY:

PETER BRICEÑO, SREA
LIC # 01885655 (707) 528-1400, EXT 255
PBRICENO@KEEGANCOPPIN.COM

SHAWN JOHNSON, MANAGING PARTNER / SIOR
LIC # 00835502 (707) 528-1400, EXT 238
SJOHNSON@KEEGANCOPPIN.COM

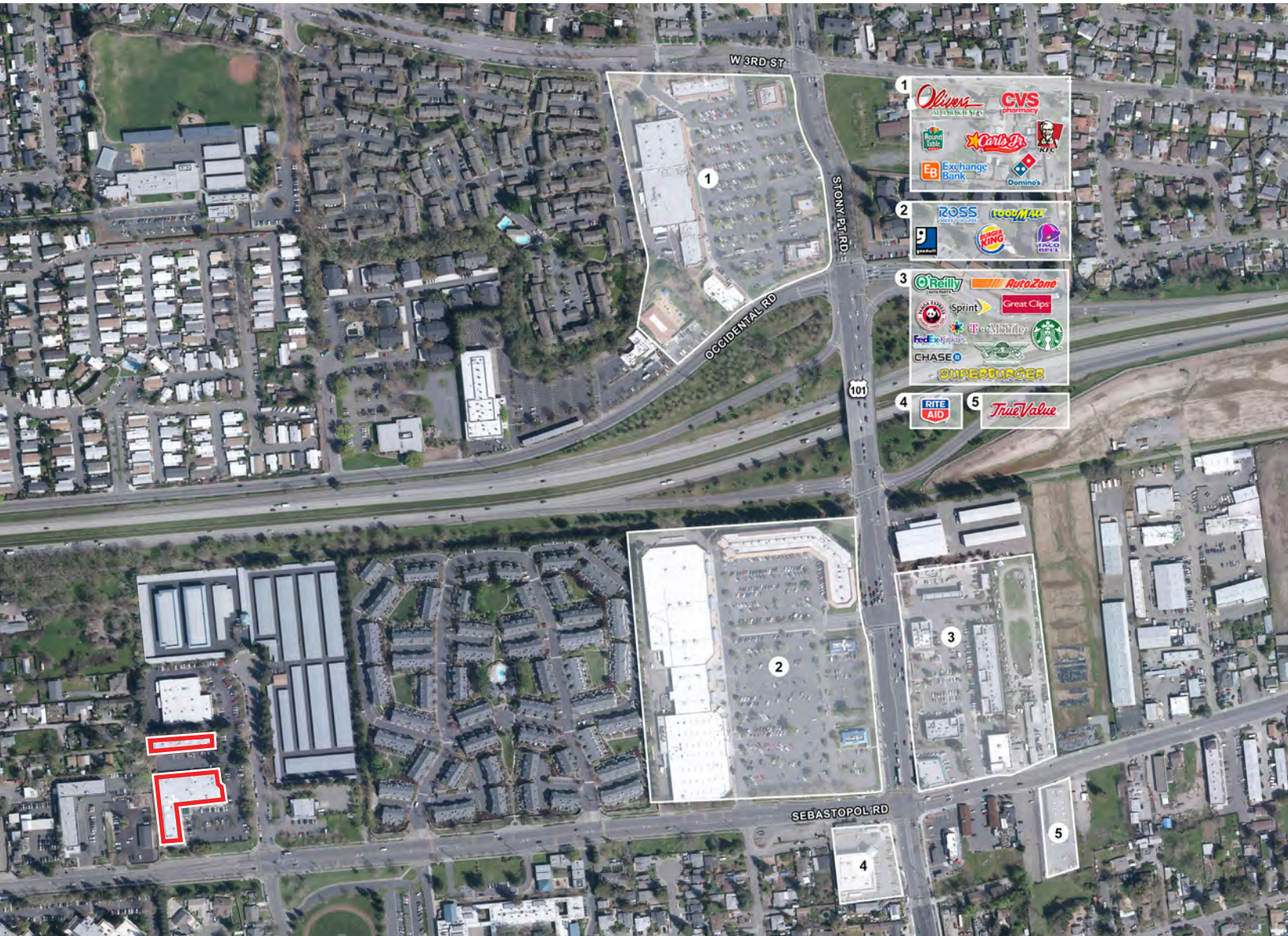
The above information, while not guaranteed, has been secured from sources we believe to be reliable. Submitted subject to error, change or withdrawal. An interested party should verify the status of the property and the information herein.



789 LOMBARDI COURT
SUITES 201/206/207
SANTA ROSA, CA

**INDUSTRIAL
SPACE FOR
LEASE**

VICINITY AERIAL



- 1
- 2
- 3
- 4
- 5

Keegan & Coppin Co., Inc.
1355 N Dutton Ave., Suite 100
Santa Rosa, CA 95401
keegancoppin.com
P: (707) 528-1400

REPRESENTED BY:

PETER BRICEÑO, SREA
LIC # 01885655 (707) 528-1400, EXT 255
PBRICENO@KEEGANCOPPIN.COM

SHAWN JOHNSON,
MANAGING PARTNER / SIOR
LIC # 00835502 (707) 528-1400, EXT 238
SJOHNSON@KEEGANCOPPIN.COM