

FOR LEASE



Laurel Square

10119 Washington Boulevard / Laurel, MD 20723

Overview

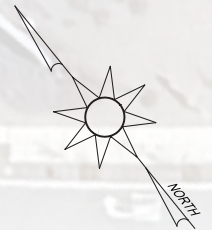
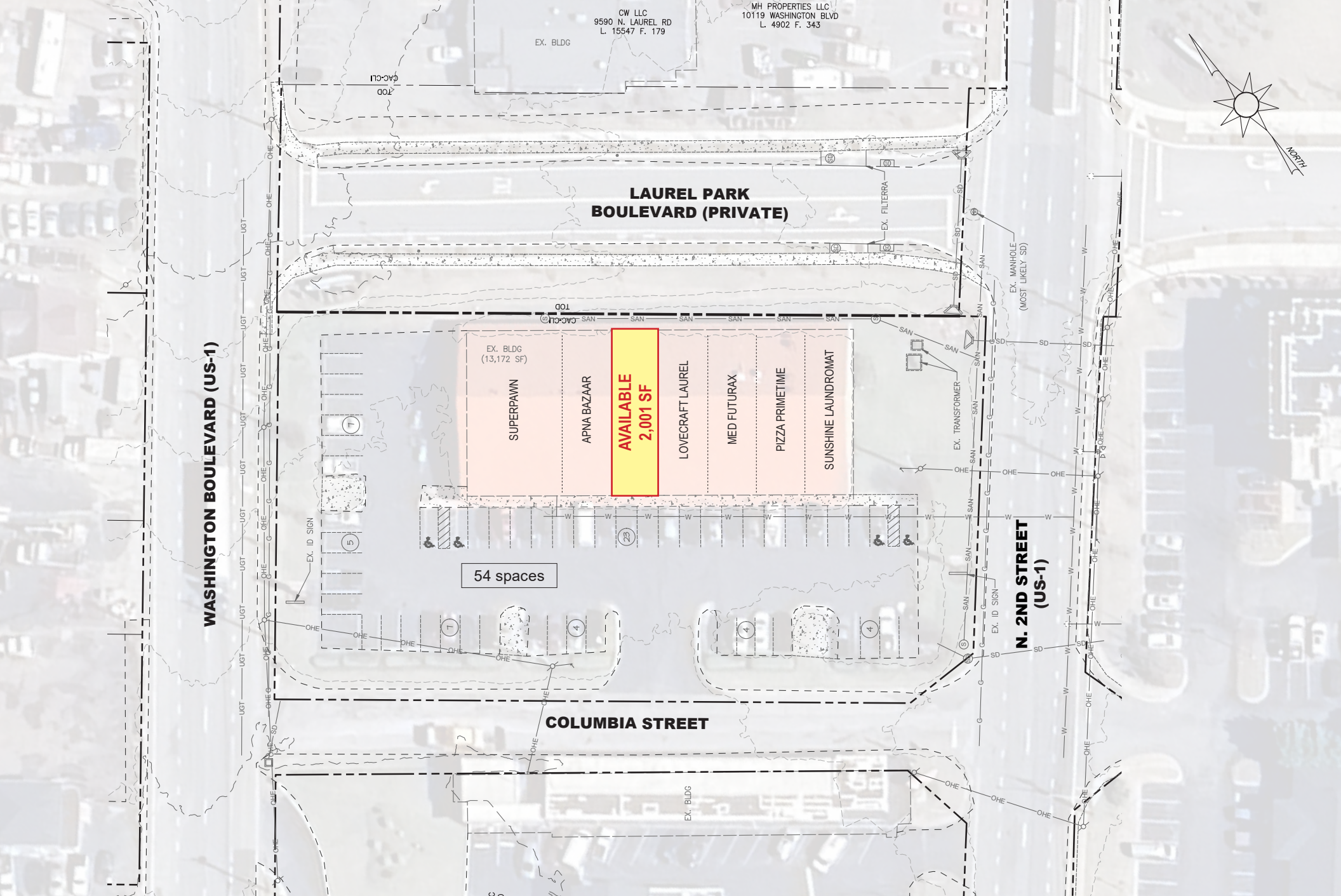
Laurel Square Shopping Center is situated in the US 1 median at the northern entrance to the City of Laurel. The site features access and pylon signage on both the north and southbound lanes of Washington Boulevard. Laurel Square is an ideal location for quasi-retail or service-oriented businesses looking for a presence in the heart of Laurel.

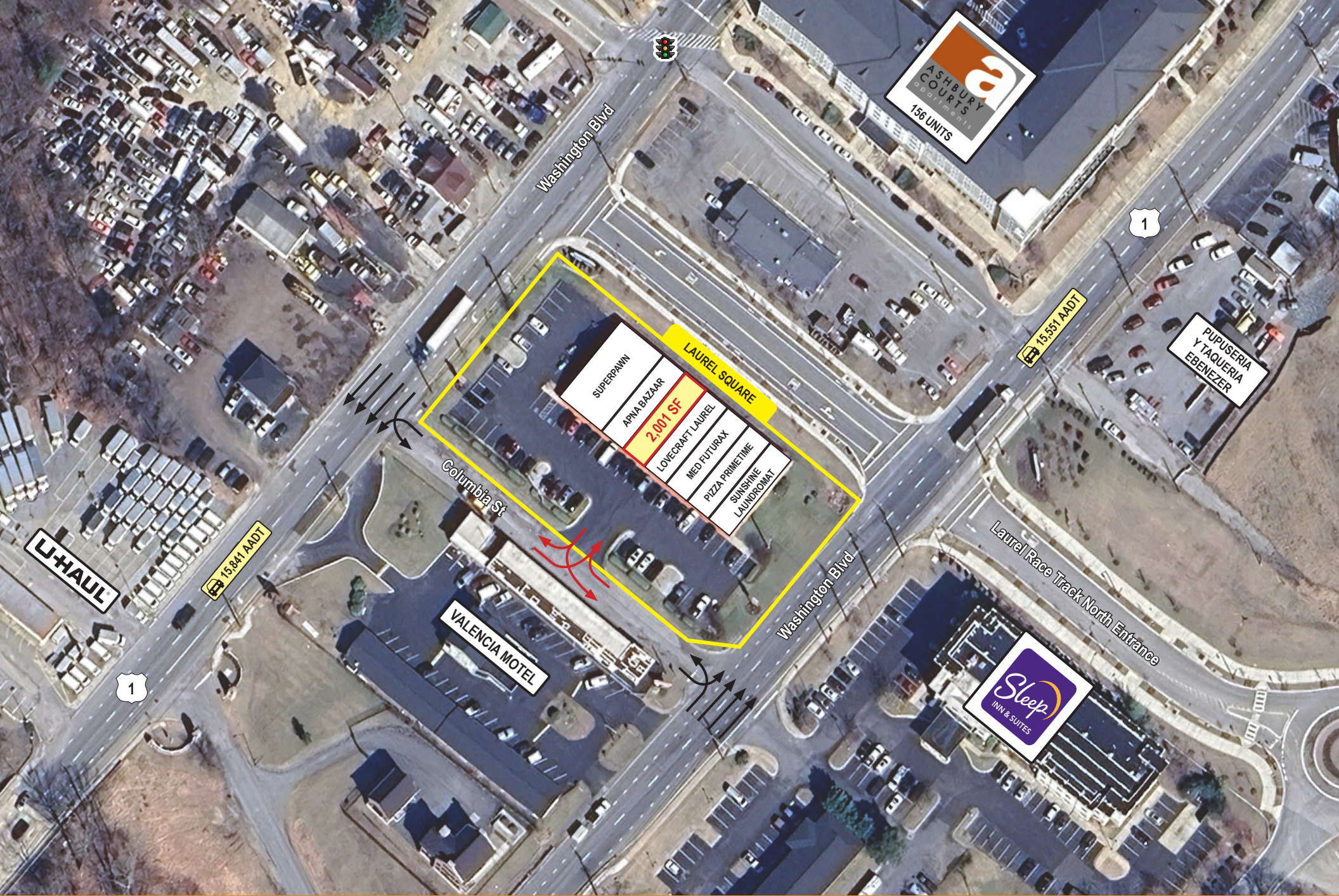
Quick Facts

- Availability: Immediate
- Size: 2,001 square feet
- Rental Rate: Negotiable
- Net Charges: \$3.38 psf CAM; \$0.54 psf INS; \$2.50 psf TAX
- Nearby Retailers:



2025 Demographics	1 mile	3 miles	5 miles
POPULATION	12,723	102,199	173,987
HOUSEHOLDS	4,936	38,219	62,430
AVG. HH INCOME	\$111,736	\$133,846	\$146,029
DAYTIME POPULATION	12,603	82,779	186,053
TRAFFIC COUNT	15,841 AADT (Washingon Blvd - Southbound)	15,551 AADT (Washingon Blvd - Northbound)	





Interested? Contact:

Andrew Segall

✉ asegall@segallgroup.com

☎ 410.753.3947

📱 410.960.0361

Marcelo Grosberg

✉ mgrosberg@segallgroup.com

☎ 410.753.3948

📱 443.927.6100



Maryland

605 South Eden Street
Suite 200
Baltimore, MD 21231
410.753.3000

DC • Northern VA

8245 Boone Boulevard
Suite 200
Tysons, VA 22182
202.833.3830

Richmond

4701 Cox Road
Suite 100
Glen Allen, VA 23060
804.207.4040

Online

www.segallgroup.com

Member of
REALTY RESOURCES

**RETAIL
READY.**

segall
GROUP