

210 ELIZABETH STREET



TIMELESS CHARM MEETS

MODERN EDGE

210 Elizabeth Street is the premier office building in the heart of New York City's vibrant Nolita neighborhood. All newly renovated with 38,000-RSF of office space featuring boutique floorplates, premium finishes, multiple outdoor spaces, and historic charm. 210 Elizabeth Street offers the perfect combination for an outstanding tenant experience.

PROPERTY HIGHLIGHTS

- Fully restored historic building completed in 2024. Originally constructed in 1880, Manual Glas Architects oversaw the renovation of 204-210 Elizabeth Street, including new, stunning glass-enclosed landings on each floor
- 4,000+ SF tenant-only rooftop deck, with sweeping skyline views, fully equipped kitchen, Lynx gas grills, ADA accessibility and restrooms
- Abundant natural light from multiple exposures in each suite, with select suites featuring original brick vaulted ceilings, and a Penthouse floor with a private terrace and roof deck
- All new, state-of-the-art infrastructure upgrades, including elevators, individual tenant-controlled HVAC systems, ADA compliance, and fire safety systems
- Luxury residential finishes, including hardwood floors, top of the line stainless steel appliances and integrated cabinetry, with private restrooms and pantries in each suite
- A few minutes walk to multiple subway lines including the 6, R/W, F/M/B/D, and J/Z trains, and 1-minute from the nearest Citi Bike station
- Convenient award winning and Michelin Star eateries in the building and immediate neighborhood



58,390 TOTAL SQUARE FEET



SIX-STORY COMPLEX



24/7 ATTENDED LOBBY
WITH FOB ACCESS



EXCLUSIVE, NEWLY
COMPLETED RENOVATION

TAILORED TO
**YOUR
 BUSINESS**

AVAILABILITY



ASKING RENT
 UPON REQUEST



POSSESSION
 IMMEDIATE



TERM
 5+ YEARS



ENTIRE 6TH FLOOR

TOTAL	2,732 RSF
PRIVATE ROOFDECK	1,300 SF
PRIVATE TERRACE	360 SF

ENTIRE 5TH FLOOR

TOTAL	3,241 RSF
-------	-----------

ENTIRE 4TH FLOOR

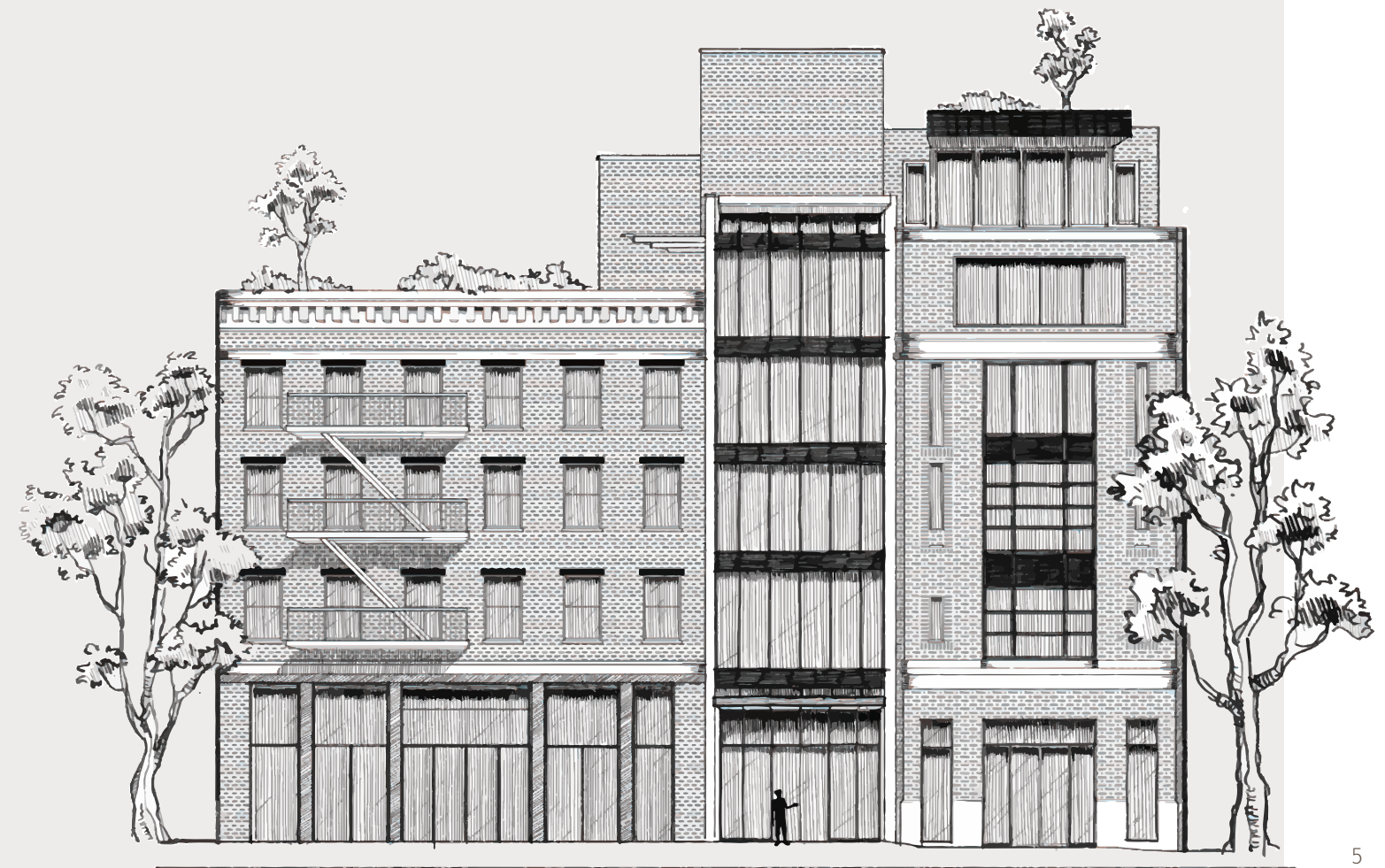
NORTH	7,111 RSF
SOUTH	3,241 RSF
TOTAL	10,327 RSF

ENTIRE 3RD FLOOR

NORTH	7,111 RSF
SOUTH	3,210 RSF
TOTAL	10,321 RSF

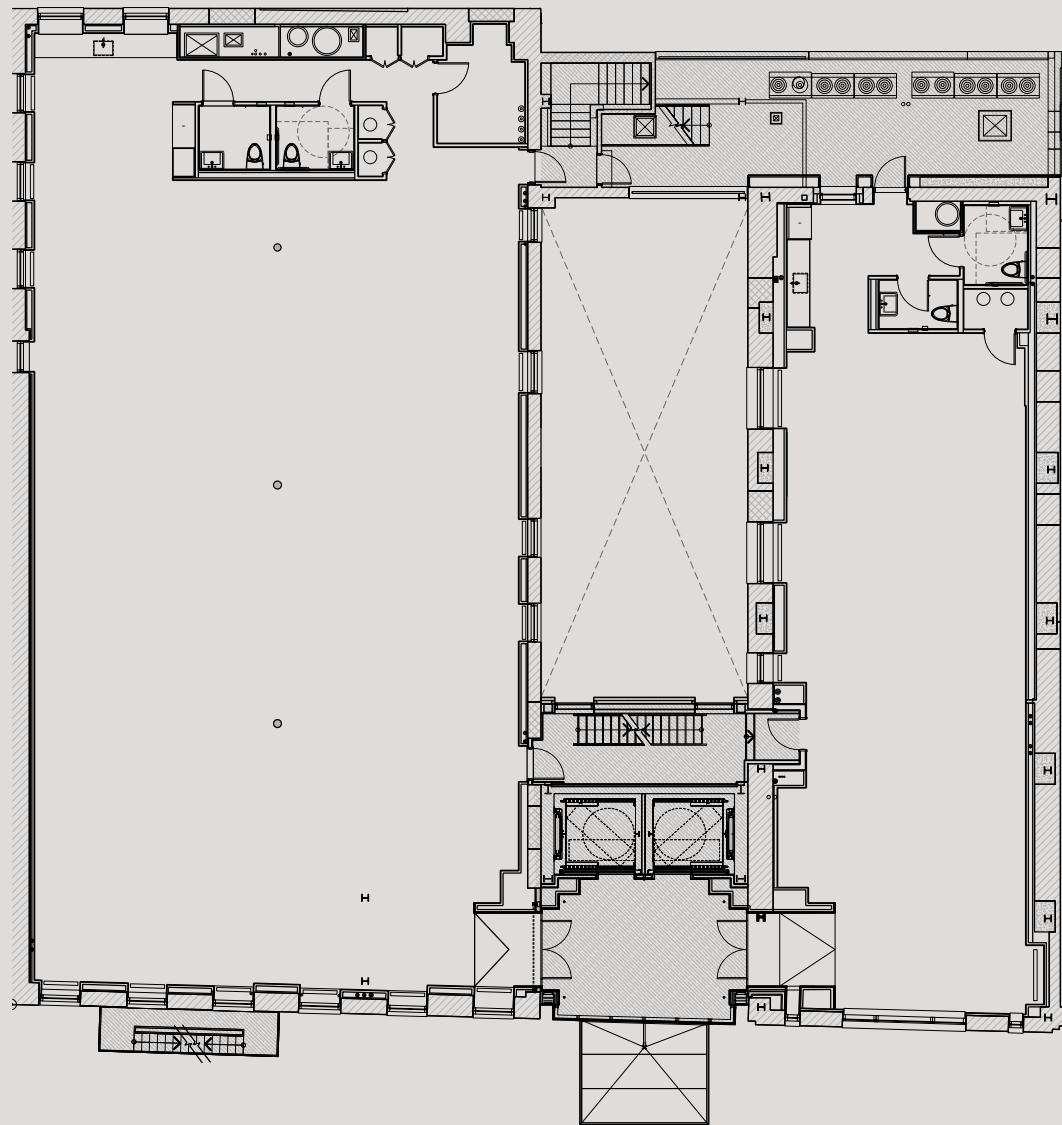
ENTIRE 2ND FLOOR

NORTH	7,104 RSF
SOUTH	3,499 RSF
TOTAL	10,603 RSF



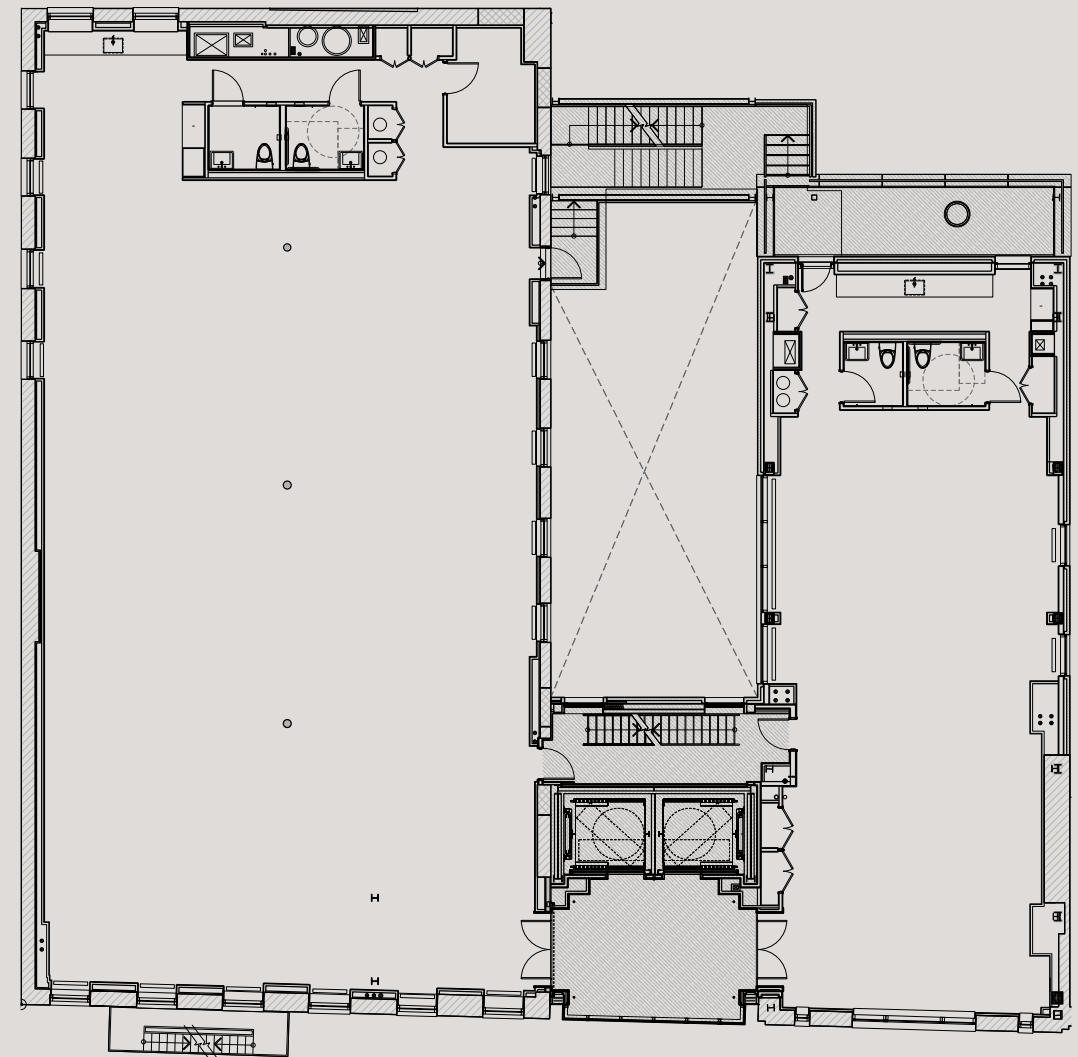
CORE & SHELL PLAN

SECOND FLOOR



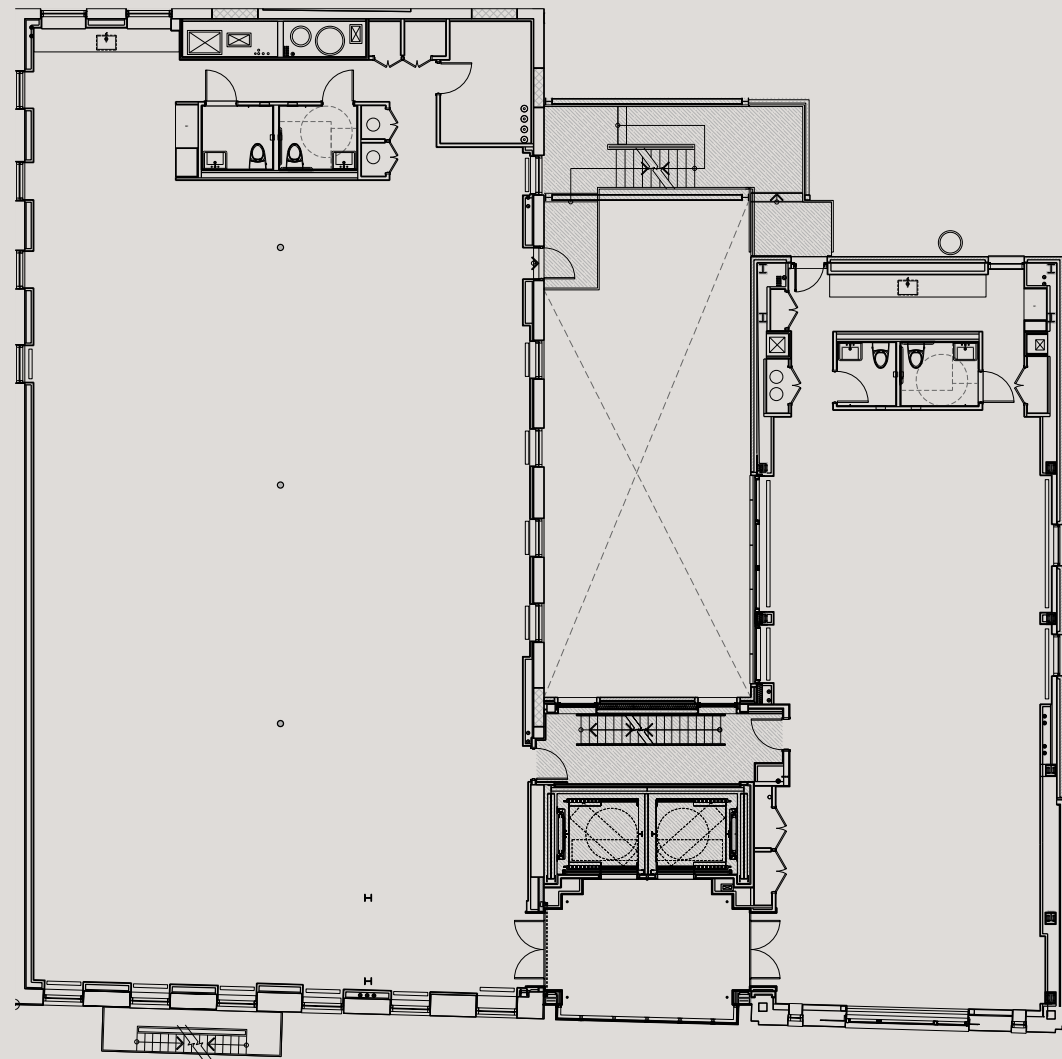
CORE & SHELL PLAN

THIRD FLOOR



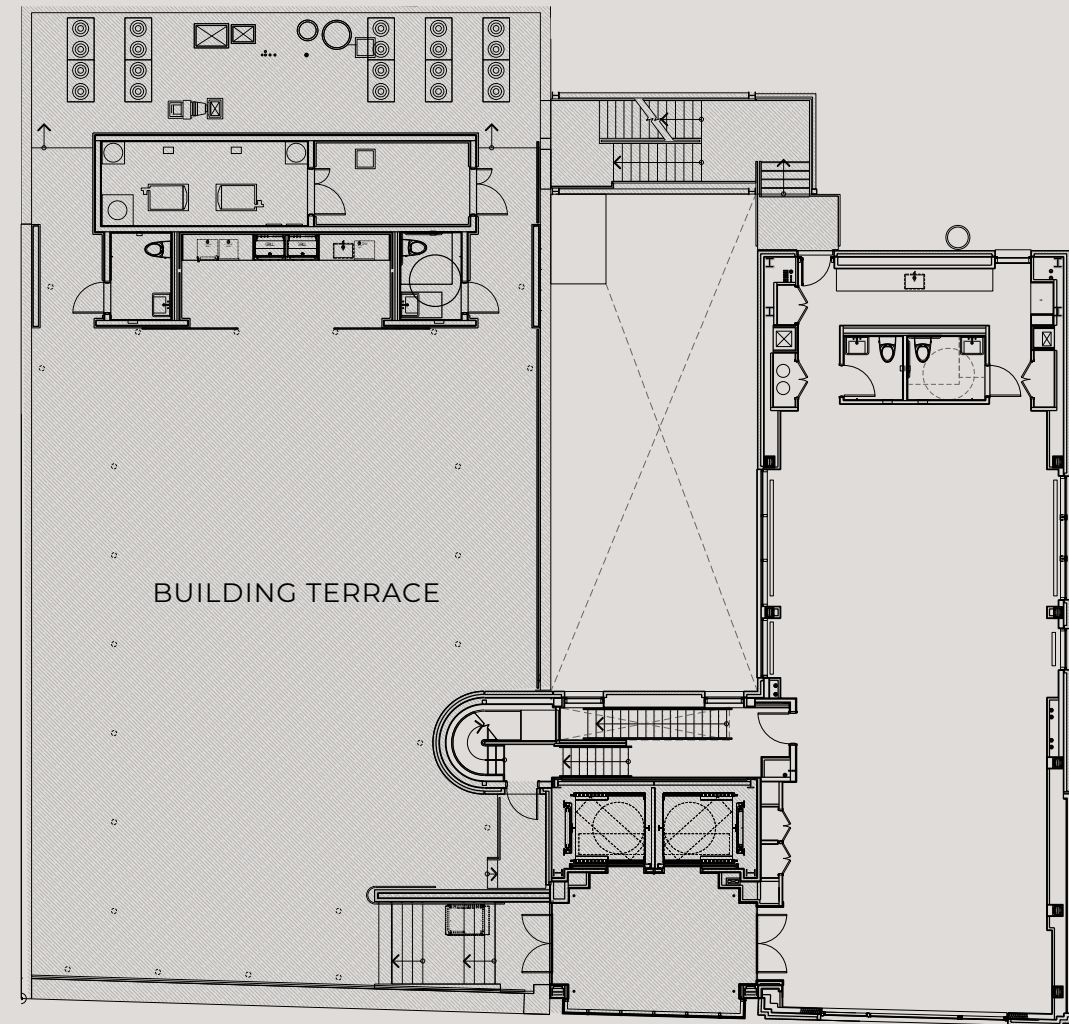
CORE & SHELL PLAN

FOURTH FLOOR



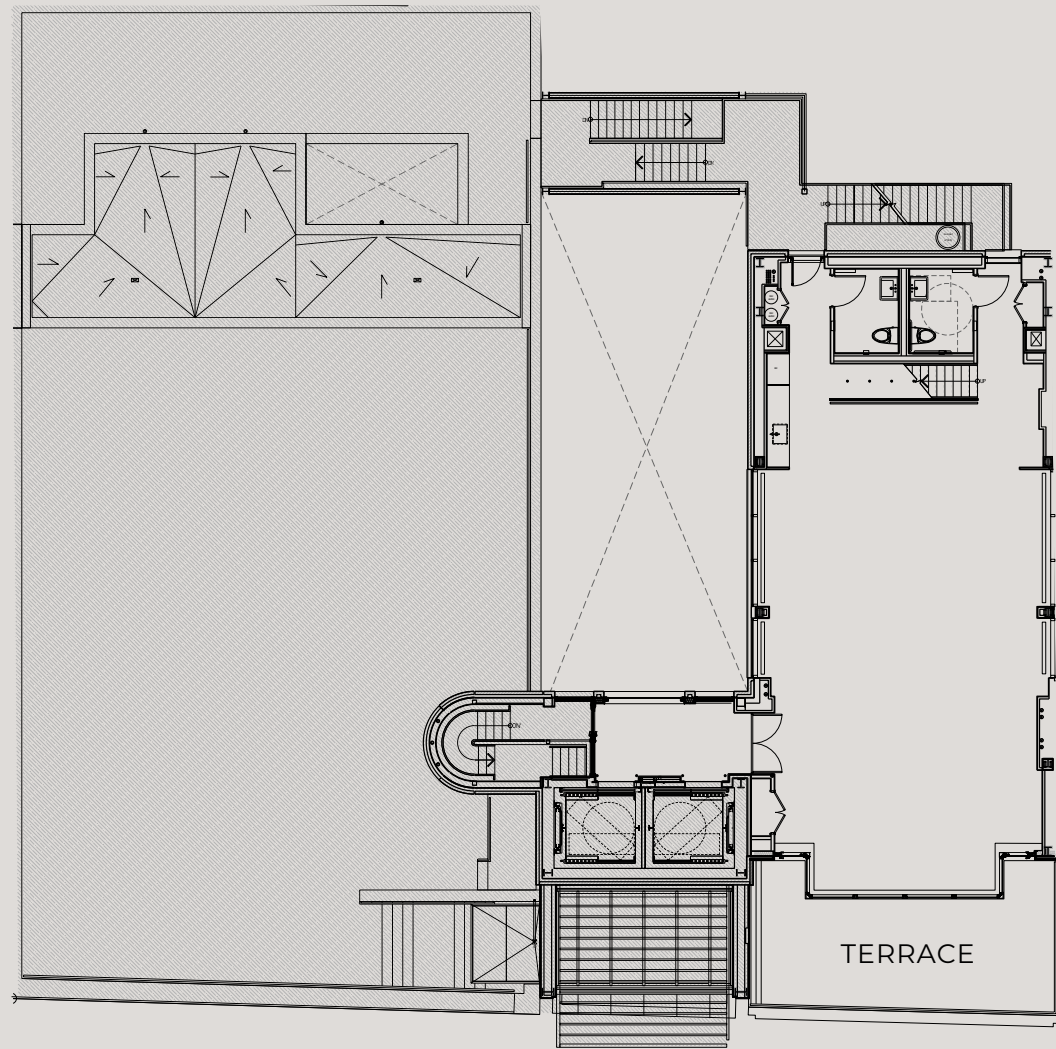
CORE & SHELL PLAN

FIFTH FLOOR



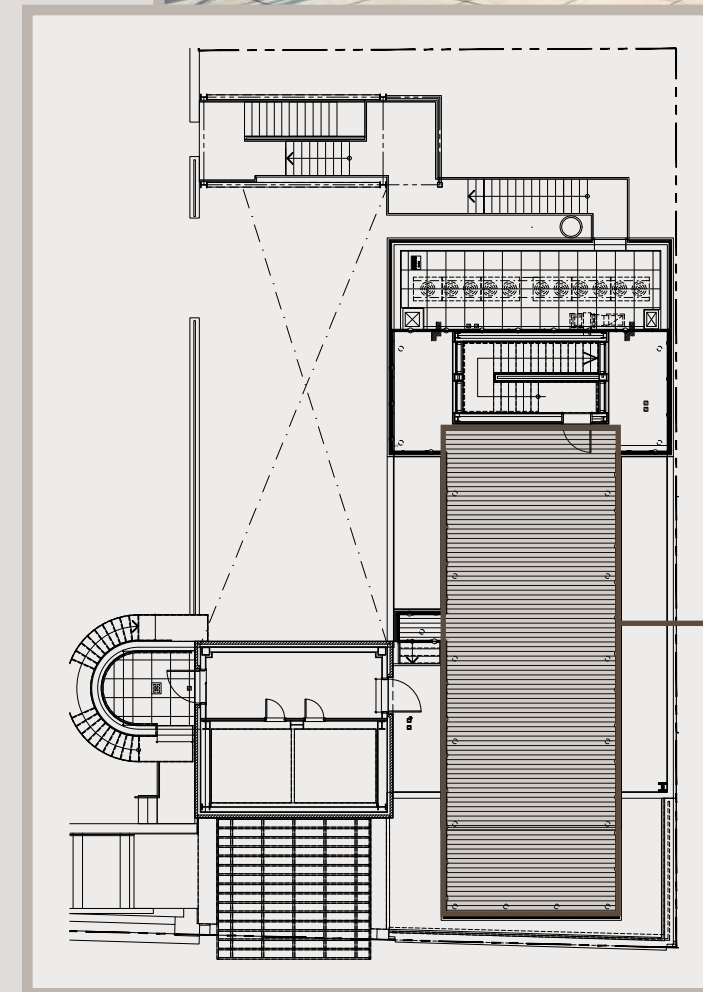
CORE & SHELL PLAN

SIXTH FLOOR



PRIVATE SIXTH FLOOR

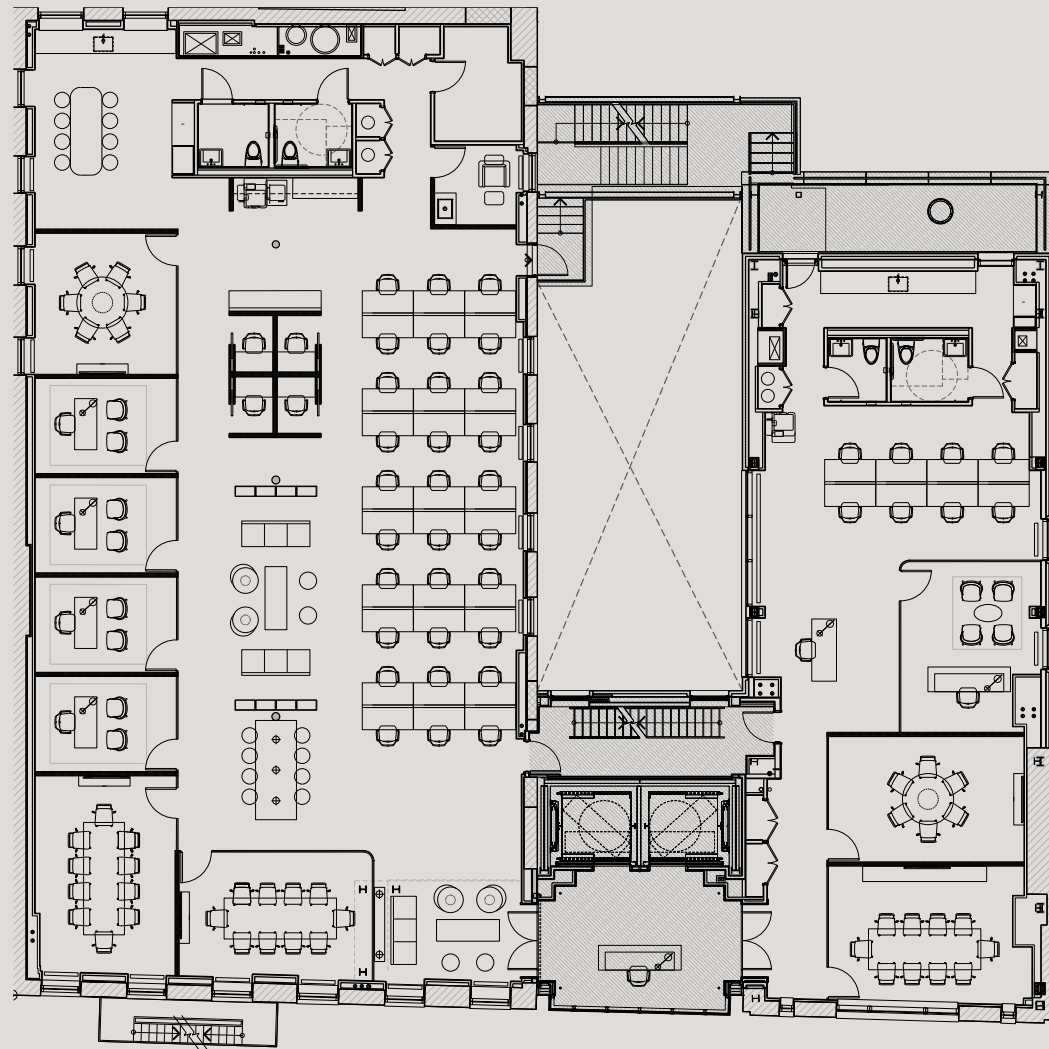
ROOFTOP



PRIVATE SIXTH FLOOR ROOFDECK

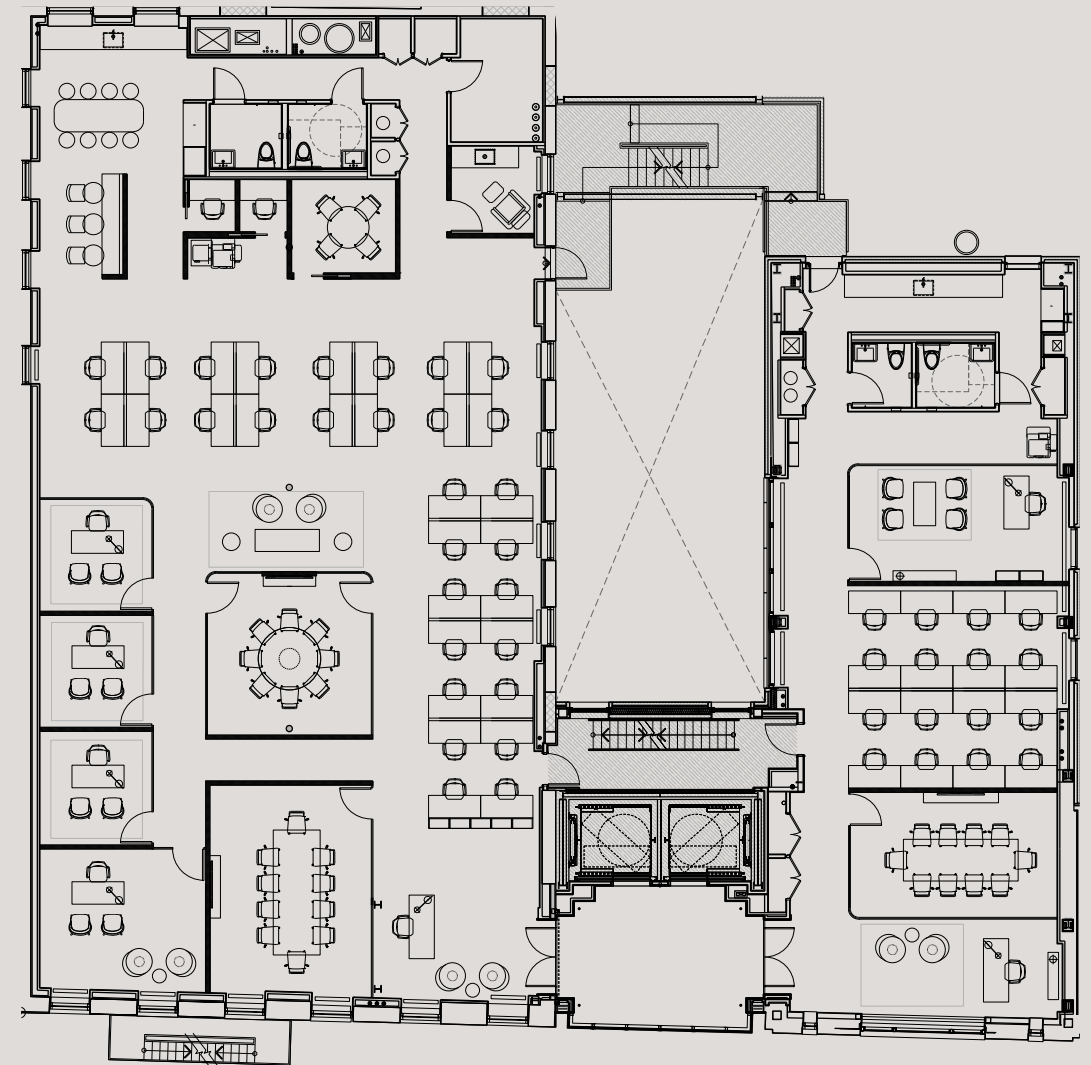
SINGLE TENANT

TEST FIT EXAMPLE



MULTI-TENANT

TEST FIT EXAMPLE



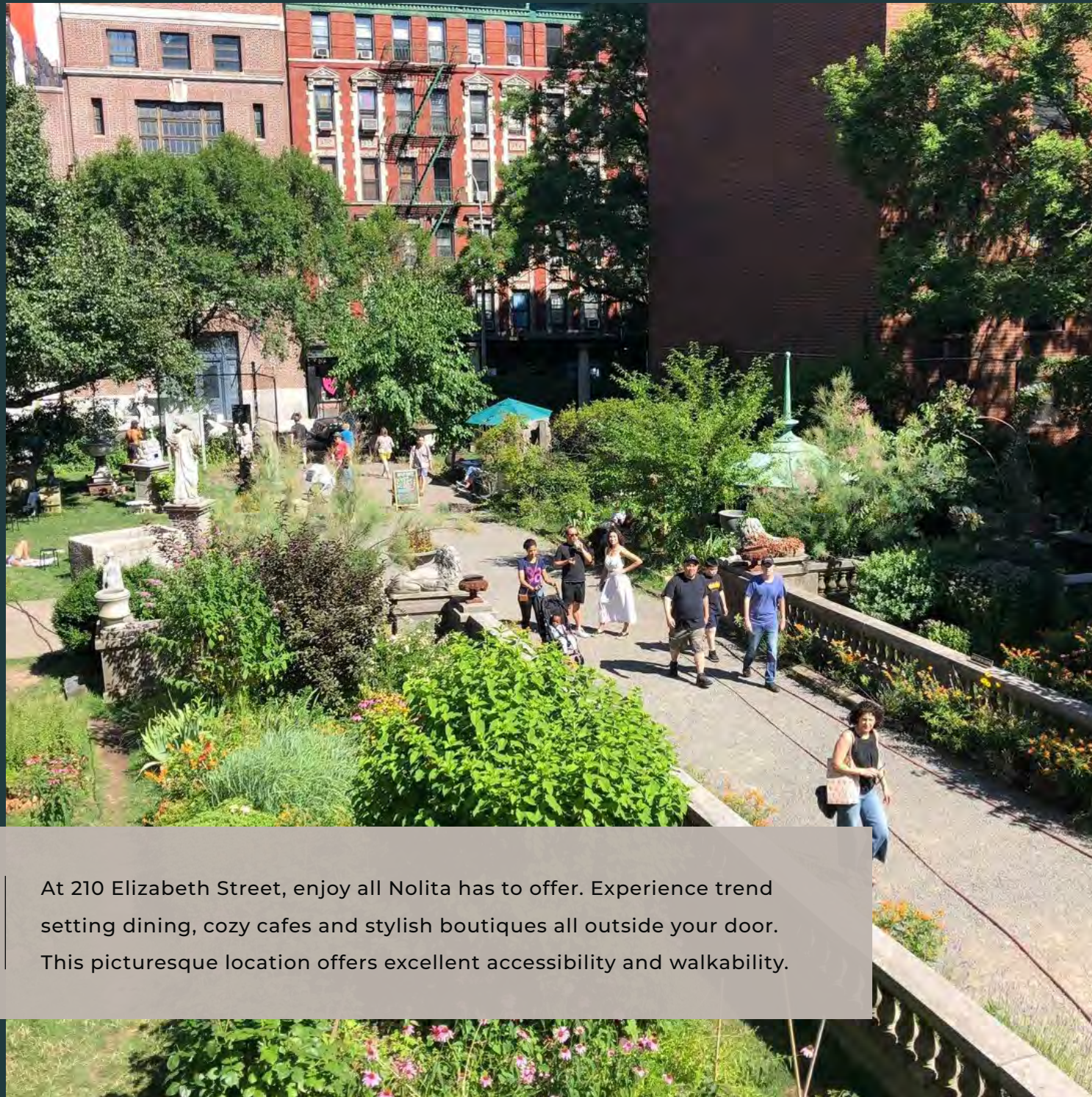
VISUALIZE YOUR
FUTURE
SPACE



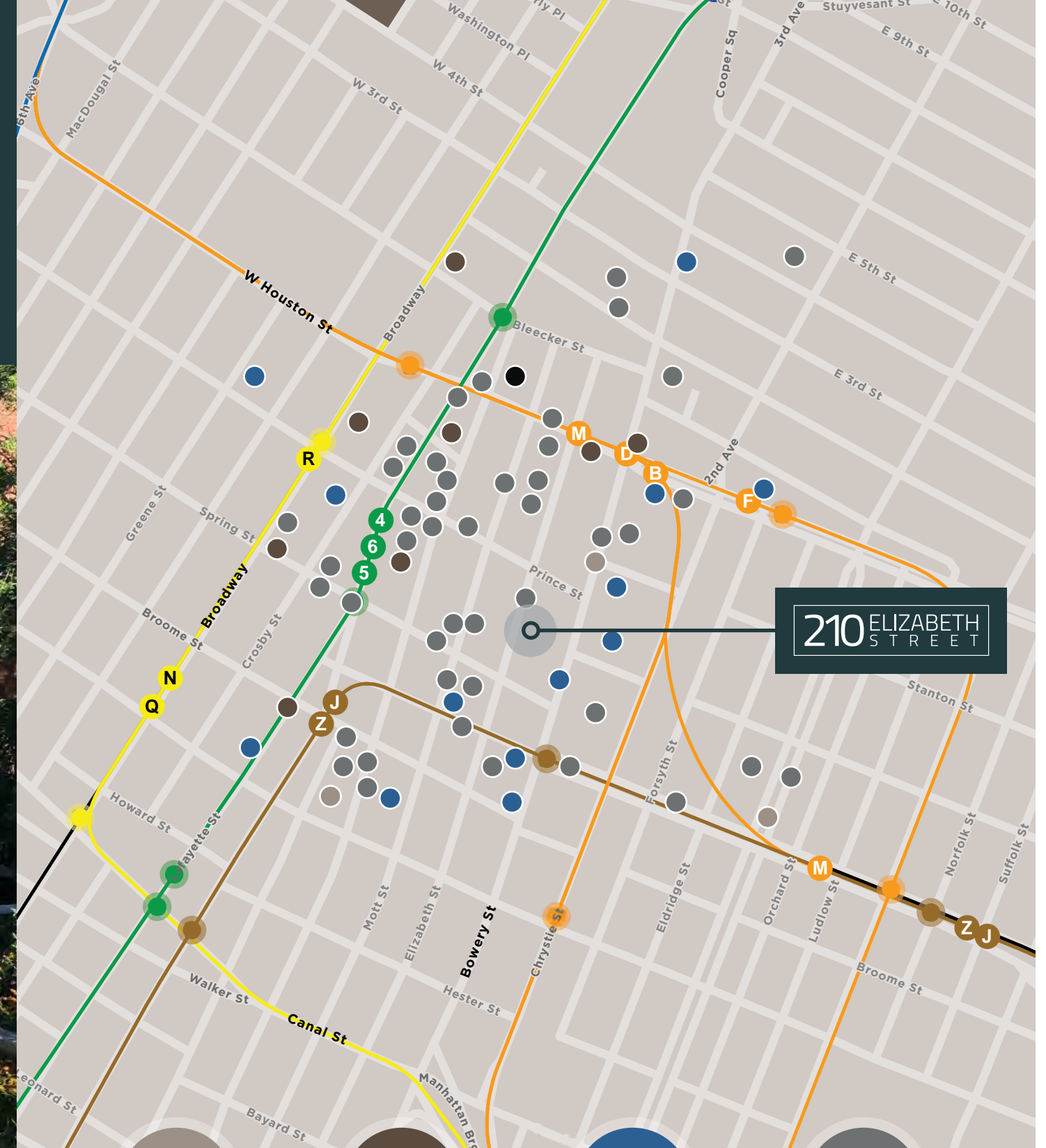


HEARTBEAT

OF MANHATTAN



At 210 Elizabeth Street, enjoy all Nolita has to offer. Experience trend setting dining, cozy cafes and stylish boutiques all outside your door. This picturesque location offers excellent accessibility and walkability.



210 ELIZABETH STREET



03
MUSEUMS



08
GYMS



13
HOTELS



45
RESTAURANTS



210 ELIZABETH STREET



For more information or to schedule an exclusive tour, please contact:

ALAN WILDES

+1 212 841 5925

alan.wildes@cushwake.com

HARLEY DALTON

+1 212 589 5106

harley.dalton@cushwake.com

JENNA CATALON

+1 212 709 0702

jenna.catalon@cushwake.com

PETER KERANS

+1 212 841 7662

peter.kerans@cushwake.com

©2024 Cushman & Wakefield. All rights reserved. The information contained in this communication is strictly confidential. This information has been obtained from sources believed to be reliable but has not been verified. NO WARRANTY OR REPRESENTATION, EXPRESS OR IMPLIED, IS MADE AS TO THE CONDITION OF THE PROPERTY (OR PROPERTIES) REFERENCED HEREIN OR AS TO THE ACCURACY OR COMPLETENESS OF THE INFORMATION CONTAINED HEREIN, AND SAME IS SUBMITTED SUBJECT TO ERRORS, OMISSIONS, CHANGE OF PRICE, RENTAL OR OTHER CONDITIONS, WITHDRAWAL WITHOUT NOTICE, AND TO ANY SPECIAL LISTING CONDITIONS IMPOSED BY THE PROPERTY OWNER(S). ANY PROJECTIONS, OPINIONS OR ESTIMATES ARE SUBJECT TO UNCERTAINTY AND DO NOT SIGNIFY CURRENT OR FUTURE PROPERTY PERFORMANCE.