


Office Space  
For Lease  
2,659 SF

# 3812 COCONUT PALM DRIVE

**SKYLIGHT:  
YOUR BRIGHT FUTURE  
IN TAMPA**

Prime office space in East Tampa



 3812 Coconut Palm Drive  
Tampa, FL 33619

**CBRE**

  
**SKYLIGHT**

# EXCEPTIONAL OFFICE SPACE DESIGNED FOR SUCCESS



## Prime Location

Strategically located within Sabal Park, a prestigious corporate park in Tampa's thriving I-75 corridor



## Stunning Aesthetics

Enjoy a productive and inspiring work environment with glass and natural light throughout the building



## Exceptional Accessibility

Boasts close proximity to major transportation arteries: Interstate 4, Interstate 75, and US 301, making commutes and travel a breeze



## Professional Environment

Situated in a well-maintained and professionally managed office park, surrounded by established businesses



## Convenient Commute

Just a short 15-minute drive to vibrant Downtown Tampa



## Parking

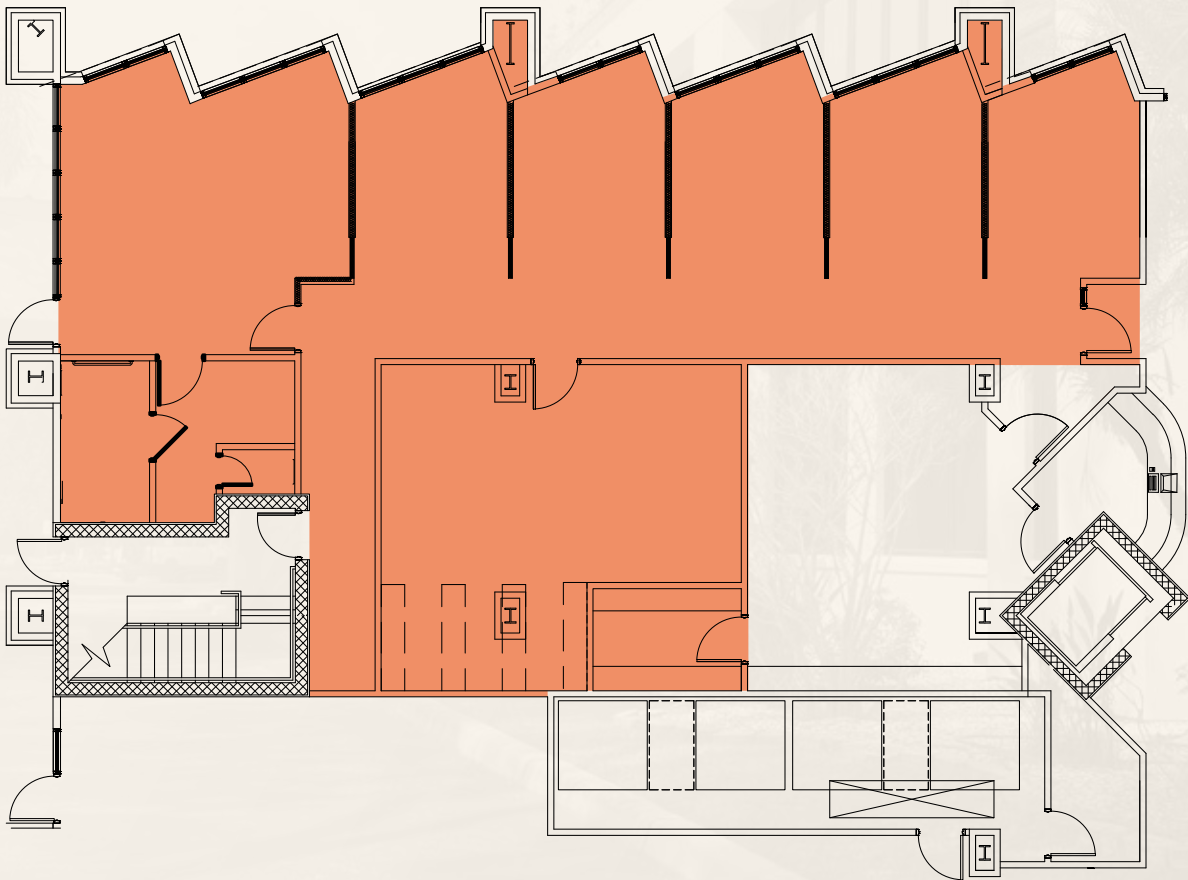
Ample 4.5 / 1,000 Parking



# FLOOR PLAN SUITE 175

A Functional & Flexible Workspace.  
Inside the Office of Tomorrow.

**2,659 SF**



# MAP YOUR SUCCESS



## Prime Location

Strategically located within Sabal Park, a prestigious corporate park in Tampa's thriving I-75 corridor



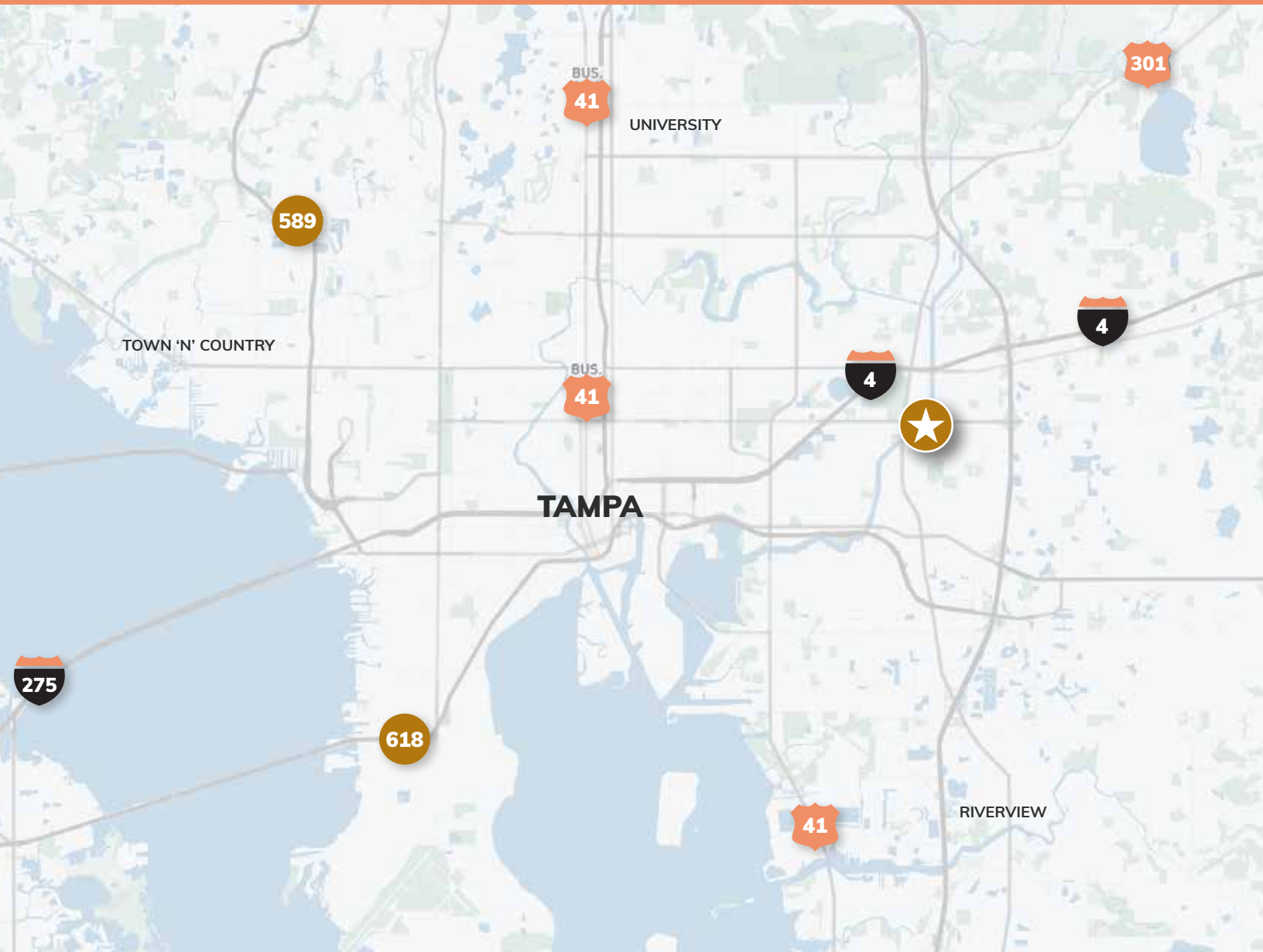
## Exceptional Accessibility

Boasts close proximity to major transportation arteries: Interstate 4, Interstate 75, and US 301, making commutes and travel a breeze



## Convenient Commute

Just a short 15-minute drive to the vibrant Downtown Tampa






**3812 Coconut Palm Drive** offers a prime location and modern amenities to help your business flourish. Enjoy ample parking, stunning views, convenient access to major roadways and a professional environment designed for success.

**Kyle Chaikin**

First Vice President  
+1 813 273 8433  
kyle.chaikin@cbre.com

**Nicole Grzywacz**

Sr. Transaction Manager  
+1 813 273 8445  
nicole.grzywacz@cbre.com

 3812 Coconut Palm Drive  
Tampa, FL 33619

**CBRE**

  
**SKYLIGHT**