



1238 Homer Street

Vancouver, BC

Available Suites

Suite #	Availability	Size
6	Immediate	1,341 SF
Elevator exposure, reception, kitchen, 2 window offices, open area, operable windows and exposed ceiling.		
7	LEASED	989 SF
Open plan, kitchen, exposed ceilings and opening windows. (Can be combined with Suite 6 for 2,267 SF)		
200	Immediate	2,722 SF
Elevator exposure, reception, 7 offices, 1 meeting room, kitchen, open area and storage.		
202	Immediate	821 SF
1 office and open area.		
203	Immediate	598 SF
Bright west facing, 2 offices and open area.		

Building Details

The "Grafton" is located in the popular Yaletown district of Downtown Vancouver. This area of Vancouver is known for its "Turn of the Century" character and is home to some of Vancouver's finer restaurants, boutiques and fashion retailers.



No warranty or representation, express or implied, is made as to the accuracy of the information contained herein, and the same is submitted subject to errors, omissions, change of price, rental or other conditions, prior sale, lease or financing, or withdrawal without notice, and of any special listing conditions imposed by our principals no warranties or representations are made as to the condition of the property or any hazards contained therein are any to be implied. Aerial image(s) courtesy of Google, Landsat/Copernicus

Lease Details

Lease Rate

Contact listing agent

Additional Rent

\$22.25 PSF (est. 2025)

Lease Term

Flexible

Highlights

- ▶ Only steps to Canada Line Station
- ▶ Fully improved premises
- ▶ Concrete construction
- ▶ Operable windows
- ▶ Air-conditioned

Hayden Elliott

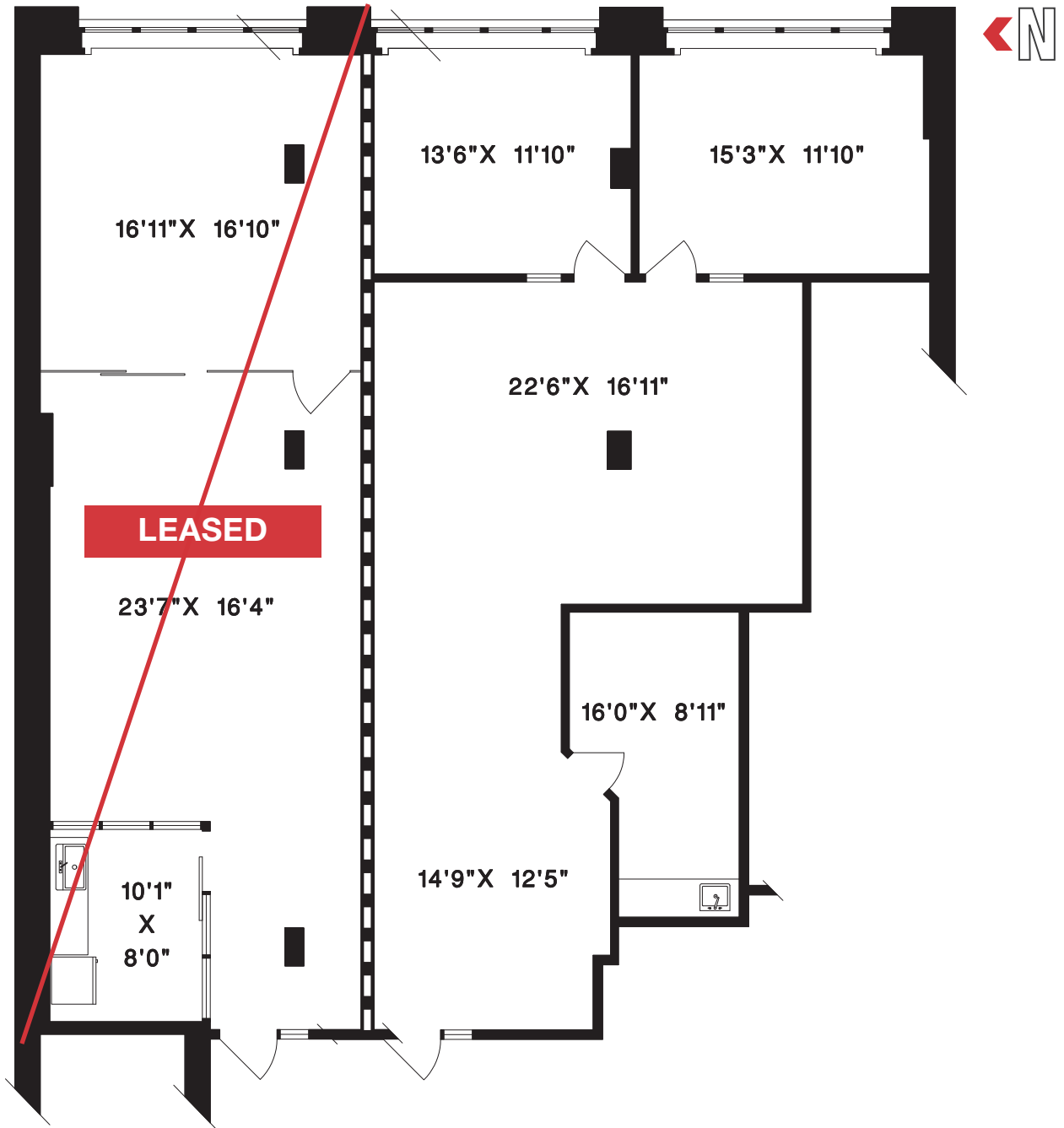
Vice President, Office Leasing
604 219 9404
hayden.elliott@naicommercial.ca

1075 W Georgia St, Suite 1300
Vancouver, BC V6E 3C9
+1 604 683 7535 | naicommercial.ca

Floor Plans

Suite 7: 989 SF

Suite 6: 1,341 SF



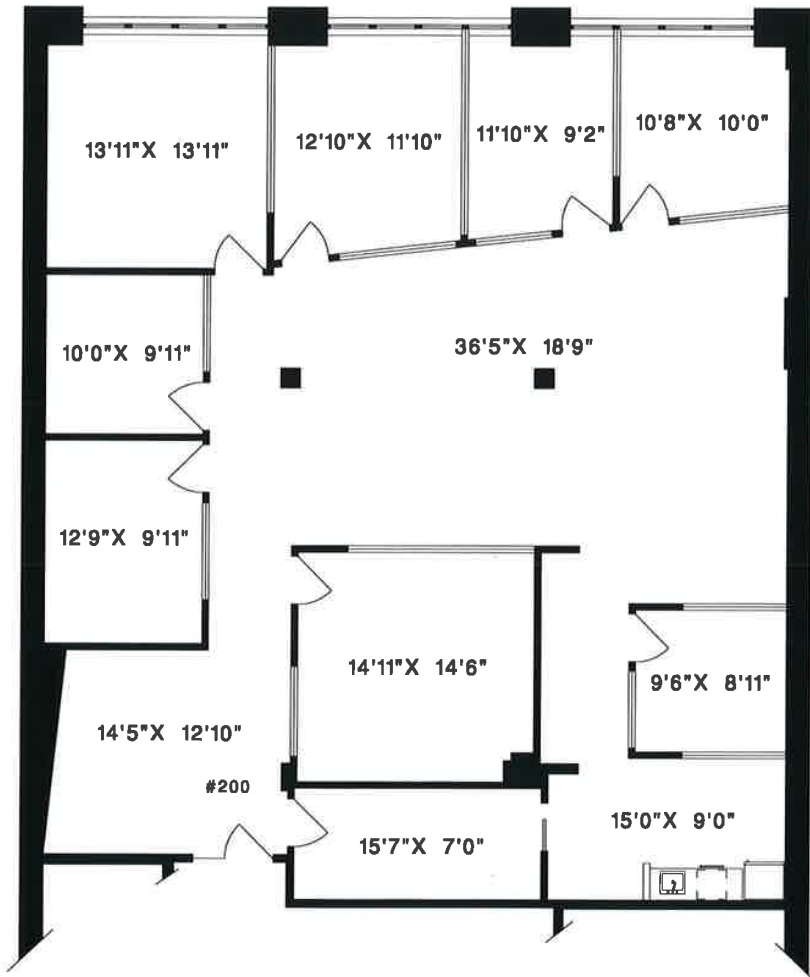
Hayden Elliott

Vice President, Office Leasing
604 219 9404
hayden.elliott@naicommercial.ca

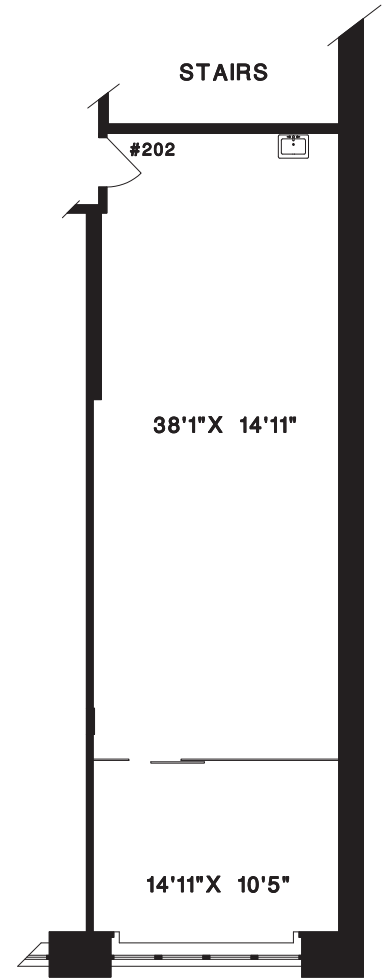
1075 W Georgia St, Suite 1300
Vancouver, BC V6E 3C9
+1 604 683 7535 | naicommercial.ca

Floor Plans

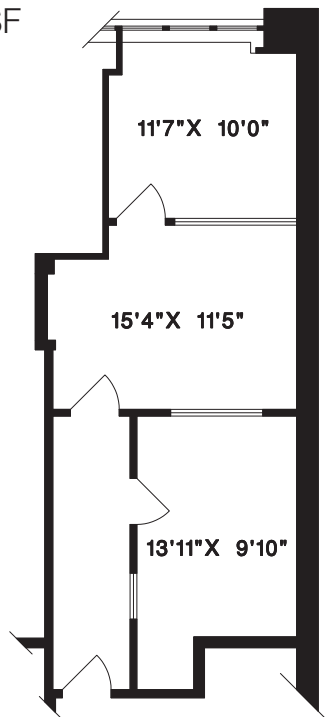
Suite 200: 2,722 SF



Suite 202: 821 SF



Suite 203: 598 SF



Hayden Elliott
Vice President, Office Leasing
604 219 9404
hayden.elliott@naicommercial.ca

1075 W Georgia St, Suite 1300
Vancouver, BC V6E 3C9
+1 604 683 7535 | naicommercial.ca