

179

CBRE

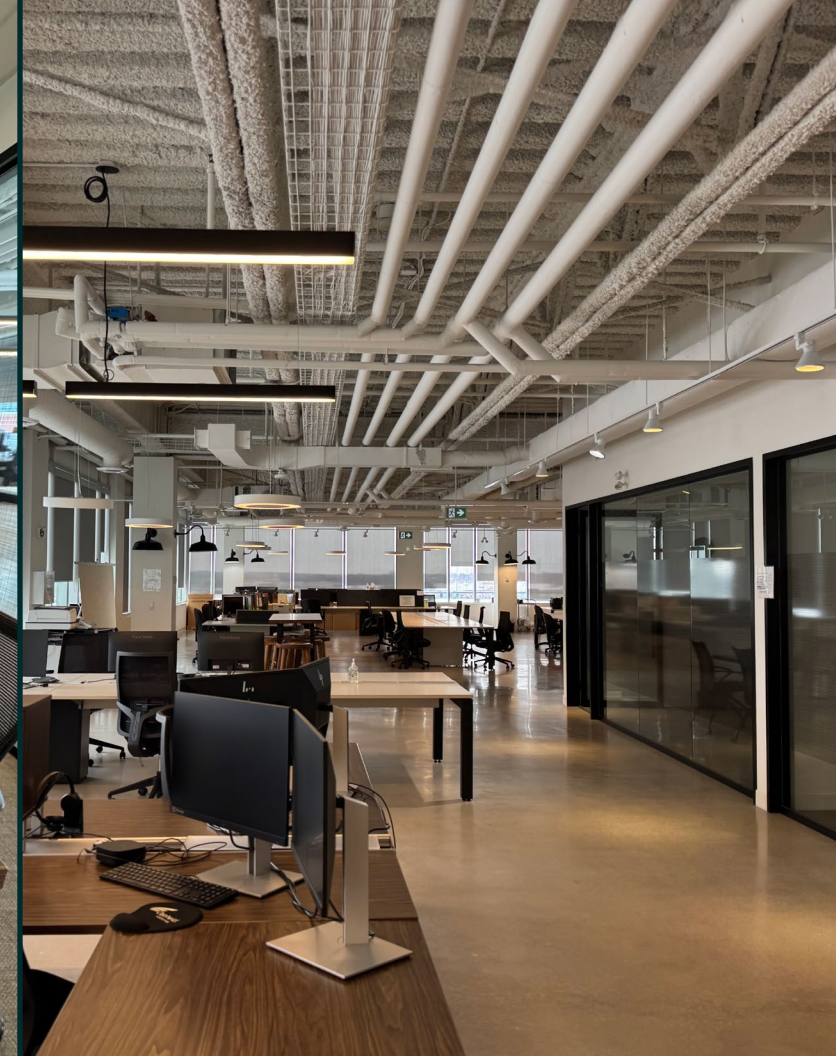
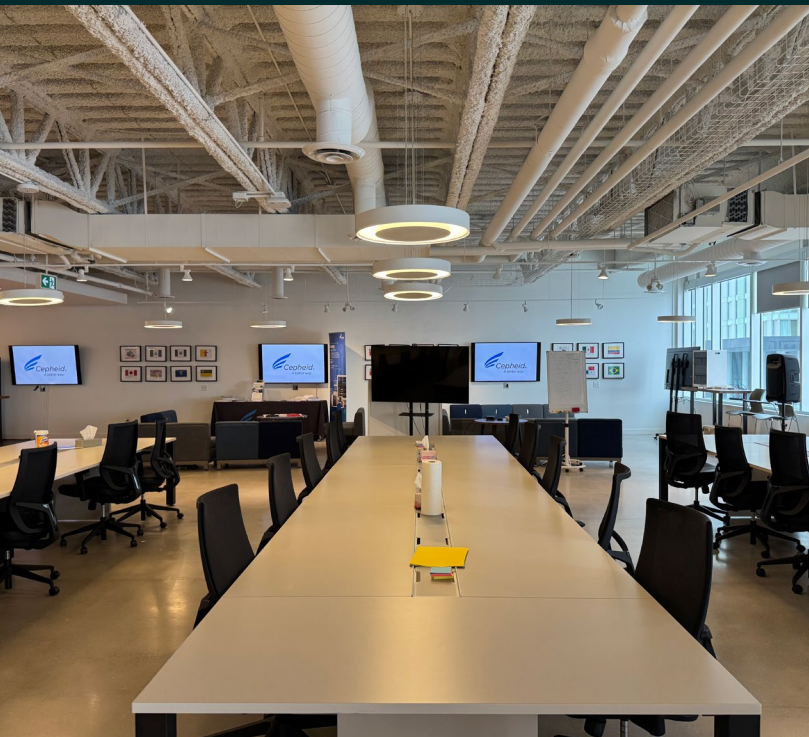
Enterprise Blvd, Markham
Full Third Floor - Suite 301

OFFICE FOR SUBLEASE



Property Details

SIZE 10,844 Rentable sq. ft.
SUBLEASE TERM Until April 30, 2029
NET RENT Contact Listing Agents
ADDITIONAL RENT \$18.00 per sq. ft. (2025 Estimate)



Premium Office For Sublease



HIGH QUALITY OPEN
CONCEPT SPACE



TONS OF NATURAL
LIGHT



LAYOUT:
SMALL RECEPTION
AREA
OPEN AREA
(APPROXIMATELY 100
WORKSTATIONS)
5 MEETING ROOMS
2 PRIVATE OFFICES
LARGE KITCHENETTE
WITH LOUNGE
INTERNAL
WASHROOMS



FURNITURE IS
AVAILABLE



PROMINENT
BUILDING SIGNAGE
FACING HIGHWAY 407

Building Features



FREE PARKING
(MIX OF UNDERGROUND AND SURFACE)

CONVENIENT ACCESS TO MANY RETAIL
AMENITIES ON SITE

UNDERGROUND PARKING PROVIDES
DIRECT ACCESS TO OFFICE FLOORS

PROMINENT BUILDING SIGNAGE

Complex Features



10 RESTAURANTS, INCLUDING SUBWAY,
MILESTONES, ME VA ME, SOUTH STREET
BURGER, THAI EXPRESS & AROMA

GOODLIFE FITNESS

12 THEATRE CINEPLEX

GOLFTOWN

RBC

Floor Plan



Local Amenities

179 ENTERPRISE BLVD

Milestones

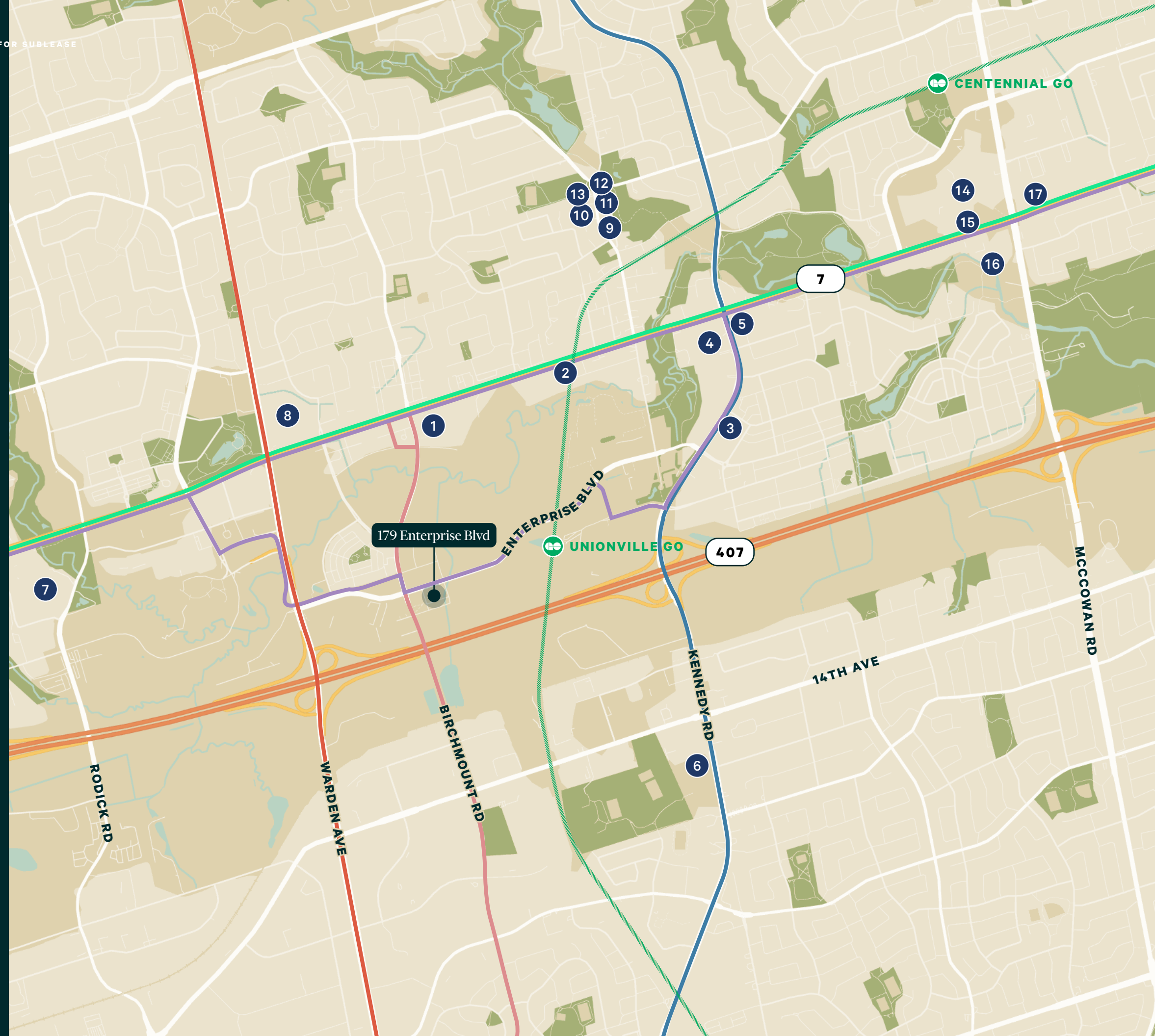
Lucullus Bakers & Roasters
Subway
Cineplex Cinemas Markham and VIP
Aroma Espresso Bar
Kiu Japanese Restaurant
Good Catch Bar & Cafe
Dolce Sorrento

- | | |
|--|---|
| 1 Panera Bread
Pet Valu
Sansotei Ramen
Five Guys
LCBO
Machi Machi
Whole Foods
BMO Bank of Montreal | 7 First Markham Place |
| 2 Smash Kitchen and Bar | 8 No Frills
Cora Breakfast and Lunch
McDonald's
TD Canada Trust
King Edward's Arms |
| 3 T&T Supermarket | 9 Flavours of Unionville |
| 4 New City Restaurant | 10 Il Postino |
| 5 Eggsmart | 11 Unionville Arms Pub & Grill |
| 6 McDonald's | 12 Starbucks |
| | 13 Jake's on Main |
| | 14 CF Markville |
| | 15 Swiss Chalet |
| | 16 FoodyMart |
| | 17 Congee Queen |

TRANSIT



- GO STATION
- VIVA Purple
- YRT Route 1 - Highway 7
- TTC Route 68B - Warden
- TTC Route 8 - Kennedy





OFFICE FOR SUBLEASE

179 Enterprise Blvd, Markham
Full Third Floor - Suite 301

CONTACT US

Jason Kelly*
Sales Associate
+1 416 495 6282
jason.kelly@cbre.com

Connor Pardy
Sales Representative
+1 905 234 0394
connor.pardy@cbre.com

*Sales Representative **Broker | All Outlines Are Approximate | CBRE Limited, Brokerage | 2005 Sheppard Ave. E., #800, Toronto, ON M2J 5B4

This disclaimer shall apply to CBRE Limited, Real Estate Brokerage, and to all other divisions of the Corporation; to include all employees and independent contractors ("CBRE"). The information set out herein, including, without limitation, any projections, images, opinions, assumptions and estimates obtained from third parties (the "Information") has not been verified by CBRE, and CBRE does not represent, warrant or guarantee the accuracy, correctness and completeness of the Information. CBRE does not accept or assume any responsibility or liability, direct or consequential, for the Information or the recipient's reliance upon the Information. The recipient of the Information should take such steps as the recipient may deem necessary to verify the Information prior to placing any reliance upon the Information. The Information may change and any property described in the Information may be withdrawn from the market at any time without notice or obligation to the recipient from CBRE. CBRE and the CBRE logo are the service marks of CBRE Limited and/or its affiliated or related companies in other countries. All other marks displayed on this document are the property of their respective owners. All Rights Reserved. Mapping Sources: Canadian Mapping Services canadamapping@cbre.com; MapPoint, DMTI Spatial, EnviroNics Analytics, Microsoft Bing, Google Earth-

