



Real Estate  
Developments



COMING SOON



CRUs + Drive-Thrus  
AVAILABLE



EVER @ Mattson

6507 25 Avenue SW, Edmonton

**CRUs + Drive-Thrus  
Available  
2026 est.**



# EVER @ Mattson

6507 25 Avenue SW, Edmonton

## No Frills Anchored Retail Complex

EVER @ Mattson will serve as a destination for the developing neighbourhood of Mattson and the adjacent neighbourhoods of Summerside, The Orchards, and Walker Lakes. The centre will provide convenient goods and services for residents with a No Frills anchoring the centre and multiple retail and professional opportunities.

- Corner exposure and access on both 66th Street and the future 25th Avenue SW
- Site is in a rapidly growing residential area with multiple new and proposed low-medium density neighbourhoods currently under development
- Shadow anchored by a CO-OP Grocery store and Gas Bar
- Minutes away from Ellerslie Road and 91st Street
- Access to the QEII via 41st Avenue SW
- 10 minutes to Beaumont; 20 minutes to Leduc



FULL SITE - Looking Southwest

## Demographics (2019)



### POPULATION

1 KM	3 KM	5 KM
15,792	48,469	81,597



### AVERAGE INCOME

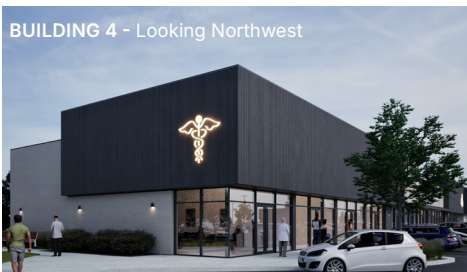
1 KM	3 KM	5 KM
\$122,590	\$125,403	\$118,950



BUILDING 3 - Looking South



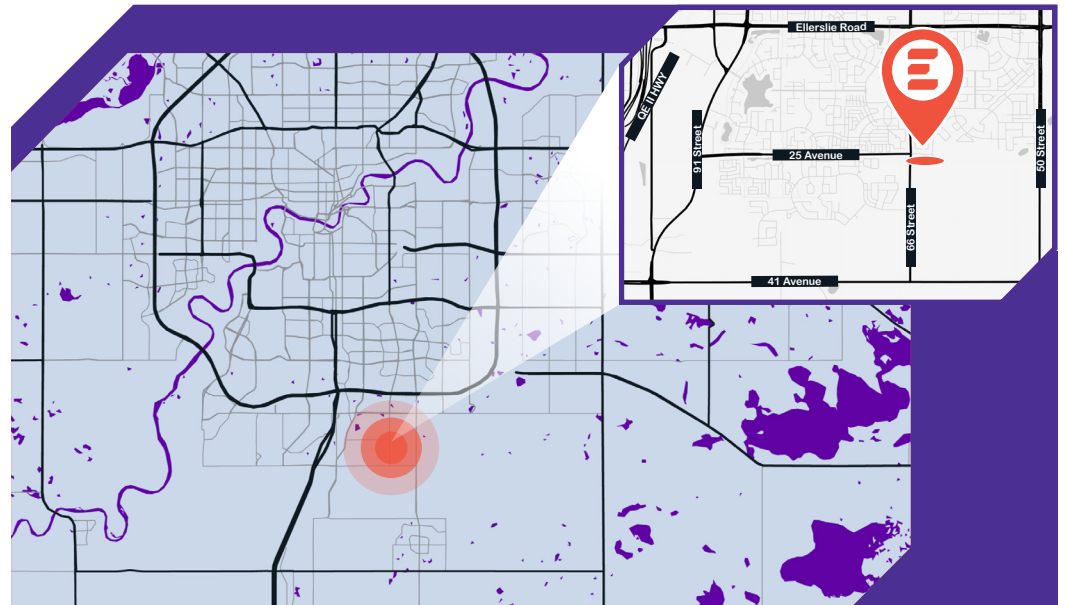
BUILDINGS 7&8 - Looking Northwest



BUILDING 4 - Looking Northwest

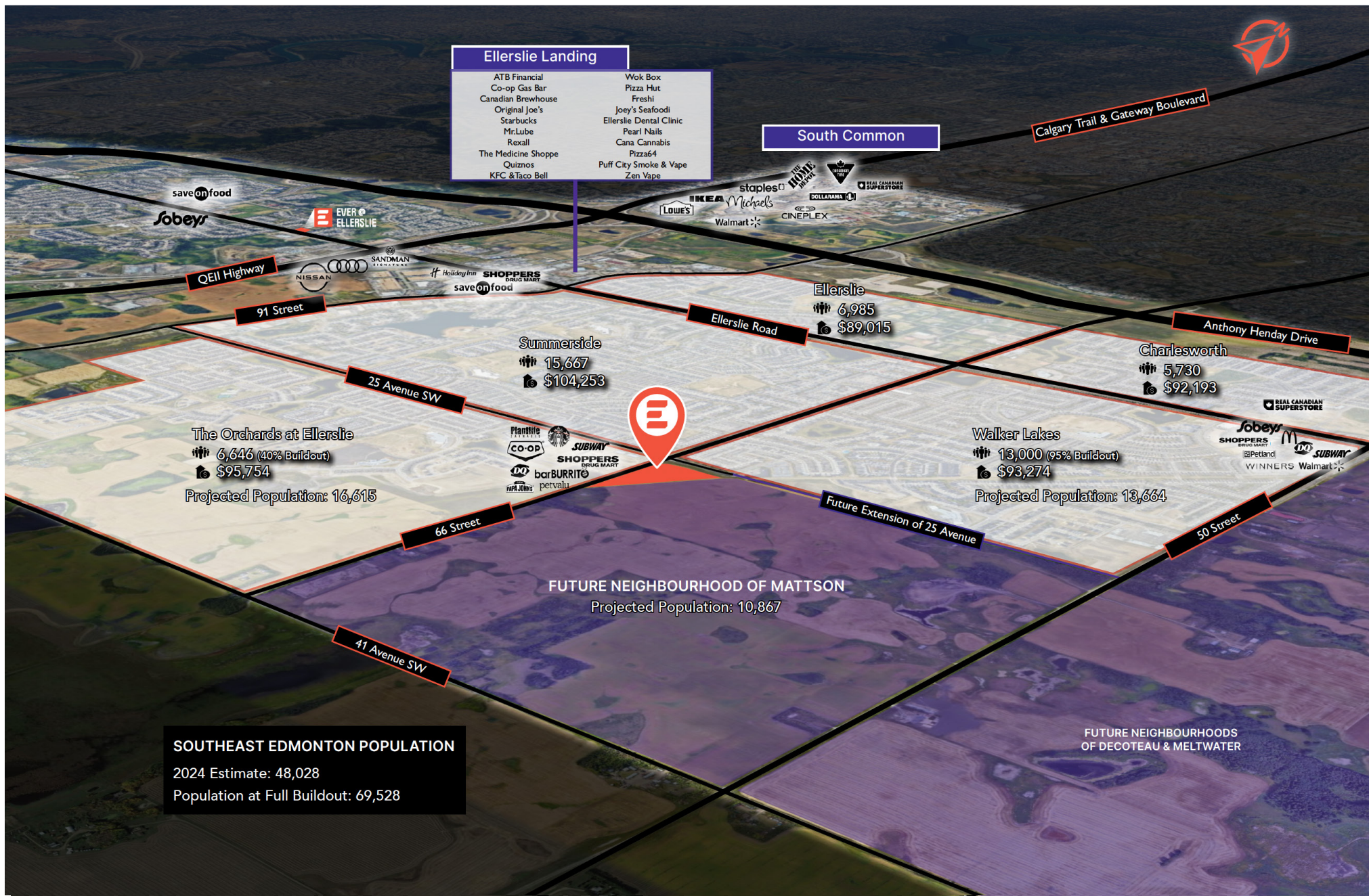


BUILDING 9 - Looking West



Please note this development is currently in the design phase and plans are subject to change. Site plan and renderings are for discussion purposes only. Renderings may not reflect most current iteration of site plan presented.

**CRUs + Drive-Thrus  
Available  
2026 est.**



CRUs + Drive-Thrus  
Available  
2026 est.



## SITE PROGRESS - MAY 2026



**CRUs + Drive-Thrus Available 2026 est.**



Real Estate Developments



FOR LEASE    PENDING    FULLY RESERVED

**Building 1 - Grocery**

101    NO FRILLS    28,000 SF ±

**Building 2 - Medical**

101 - 104    MEDICAL CLINIC & PHARMACY    4,633 SF ±

105 - 109    RADIOLOGY    5,326 SF ±

**Building 3 - Athletic Services**

101    SWIM SCHOOL    4,994 SF ±

**Building 4 - Medical/Wellness**

101 - 103    DENTAL CLINIC    3,488 SF ±

104 - 105    OPTICAL CLINIC    2,324 SF ±

106    1,135 SF ±

107    1,135 SF ±

108    PENDING    1,134 SF ±

109    NAIL SALON    1,136 SF ±

110/111    PHYSIOTHERAPY    1,816 SF ±

**Building 5 - Drive-Thru**

101    GANESH SWEETS    2,889 SF ±

**Building 6 - Child Care Service**

101    DAYCARE    6,161 SF ±

**Building 7 - Retail and Drive-Thru**

101    2,541 SF ±

102    1,740 SF ±

103    723 SF ±

**Building 8 - Retail and Drive-Thru**

101    2,571 SF ±

102    1,426 SF ±

103    BARBER    724 SF ±

**Building 9 - Gas Station, C-Store, Retail**

101    GAS STATION    2,036 SF ±

CAR WASH    1,023 SF ±

102    LIQUOR STORE    1,695 SF ±

**AVAILABILITY**  
2026 (est.)

**ZONING**  
CG - General Commercial

**PARKING**  
325 +/- Paved Surface Stalls (est.)

**LEASE RATE**  
Market

**DEVELOPMENT SIZE**  
81,896 SF +/-

**LAND AREA**  
8.54 acres +/-



**Rahim Rahemtullah**  
Partner/VP Sales  
E: rahim.r@everred.ca  
D: 587.635.4202  
C: 780.695.1200



**Alexandria Wiemer**  
Sales Manager  
Associate, RE/MAX Commercial Excel  
E: alex.w@everred.ca

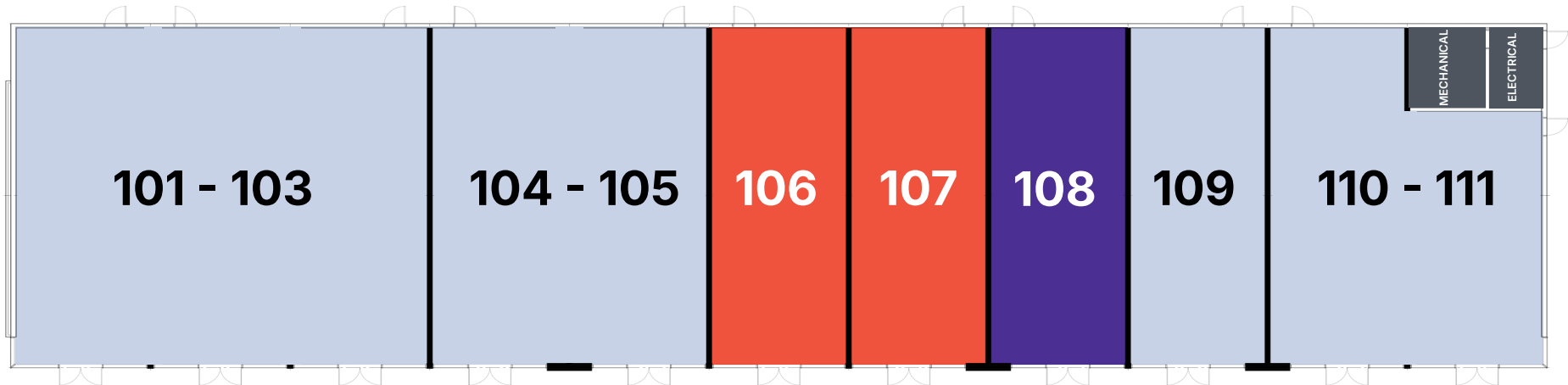
**CRUs + Drive-Thrus  
Available  
2026 est.**



## BUILDING 4 - RETAIL & PROFESSIONAL

■ FOR LEASE 
 ■ PENDING 
 ■ LEASED

25 Ave SW



Front

### BUILDING 4

#### Single Storey CRUs

<b>101 - 103</b>	DENTAL CLINIC	3,488 SF ±
<b>104 - 105</b>	OPTICAL CLINIC	2,324 SF ±
<b>106</b>	1,135 SF ±	
<b>107</b>	1,135 SF ±	
<b>108</b>	PENDING	1,134 SF ±
<b>109</b>	NAIL SALON	1,136 SF ±
<b>110 - 111</b>	PHYSIOTHERAPY	1,816 SF ±

### HIGHLIGHTS

- Endcap Drive-Thru opportunity (unit 101)
- Near access point from 25th Avenue SW
- Pylon signs with exposure to 66th Street and 25th Avenue SW
- Patio space opportunities
- Frontage on 25th Avenue SW

Contiguous options available.  
Unit sizes will be confirmed upon completion of construction by surveyor. Please contact us for details and turn-key solutions.

CRUs + Drive-Thrus  
Available  
2026 est.



## BUILDING 7 - DRIVE-THRU ENDCAP, RETAIL & PROFESSIONAL



### BUILDING 7

#### Drive-Thru & Retail

<b>101</b>	2,541 SF ±
<b>102</b>	1,740 SF ±
<b>103</b>	723 SF ±

### HIGHLIGHTS

- Endcap Drive-Thru opportunity (unit 101)
- Near access point from 25th Avenue SW
- Pylon signs with exposure to 66th Street and 25th Avenue SW
- Patio space opportunities
- Frontage on 25th Avenue SW

Contiguous options available.  
Unit sizes will be confirmed upon completion of construction by surveyor. Please contact us for details and turn-key solutions.

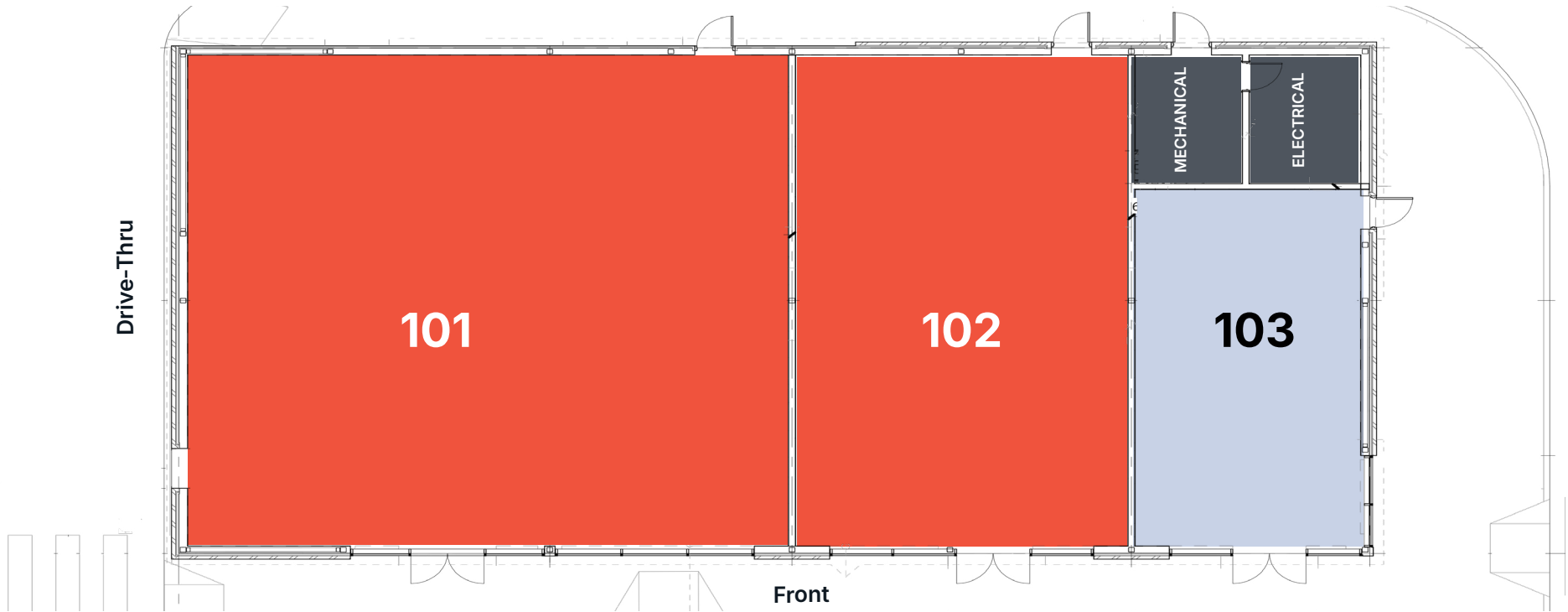
**CRUs + Drive-Thrus  
Available  
2026 est.**



## BUILDING 8 - DRIVE-THRU ENDCAP, RETAIL & PROFESSIONAL

■ FOR LEASE   
 ■ PENDING   
 ■ LEASED

25 Ave SW



### BUILDING 8

*Drive-Thru & Retail*

<b>101</b>	2,571 SF ±	
<b>102</b>	1,426 SF ±	
<b>103</b>	BARBER	724 SF ±

### HIGHLIGHTS

- Endcap Drive-Thru opportunity (unit 101)
- Near access point from 25th Avenue SW
- Pylon signs with exposure to 66th Street and 25th Avenue SW
- Patio space opportunities
- Frontage on 25th Avenue SW

Contiguous options available.  
Unit sizes will be confirmed upon completion of construction by surveyor. Please contact us for details and turn-key solutions.