

# Fletcher Parkway Medical Center

8881 FLETCHER PARKWAY  
LA MESA, CA



**GROUND FLOOR IMAGING CENTER AVAILABLE**  
UNDER NEW OWNERSHIP WITH MAJOR RENOVATIONS COMPLETED

**CBRE**

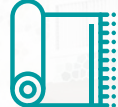
## Project Improvements



Renovated common area restrooms



Upgraded elevator cabs



Replaced hallway carpeting



Exterior facade upgraded



LED exit lighting upgraded



Common area painted



Artwork in common areas



Interior electronic tenant directories and building maps



Main lobby renovation



Recaulked and resealed windows



Enhanced monument signage



Side lobby renovated



Free Parking

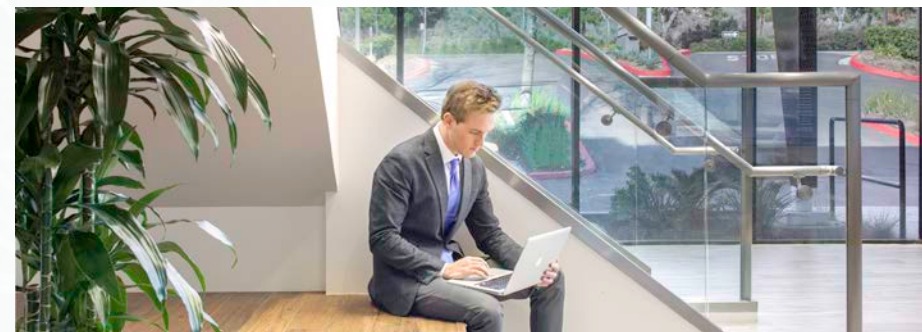
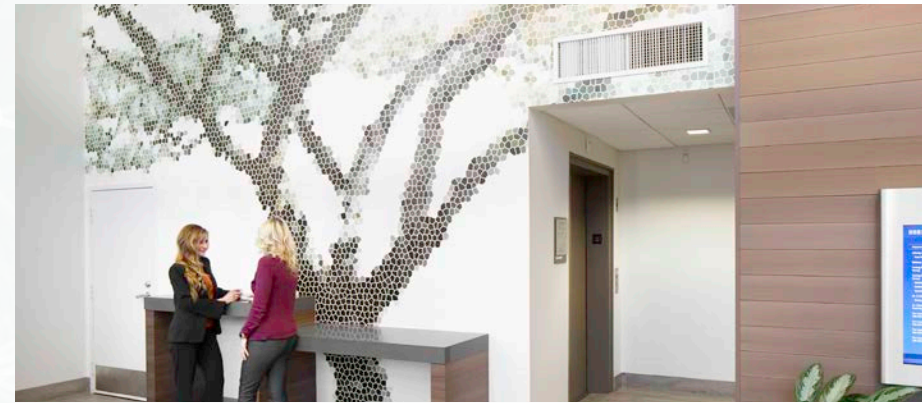
## Project Design Statement

The exterior and interior renovation of the Anchor Health, 8881 Fletcher Parkway, medical office building has been designed to be a seamless experience from the building exterior to interior public spaces. Architectural features are warm and inviting, and also serve as feature way finding elements. The design language of materials is reflected throughout all aspects of the renovation including, exterior and interior architectural elements, finishes, millwork, signage and branded graphics.



## Available Suites for Lease

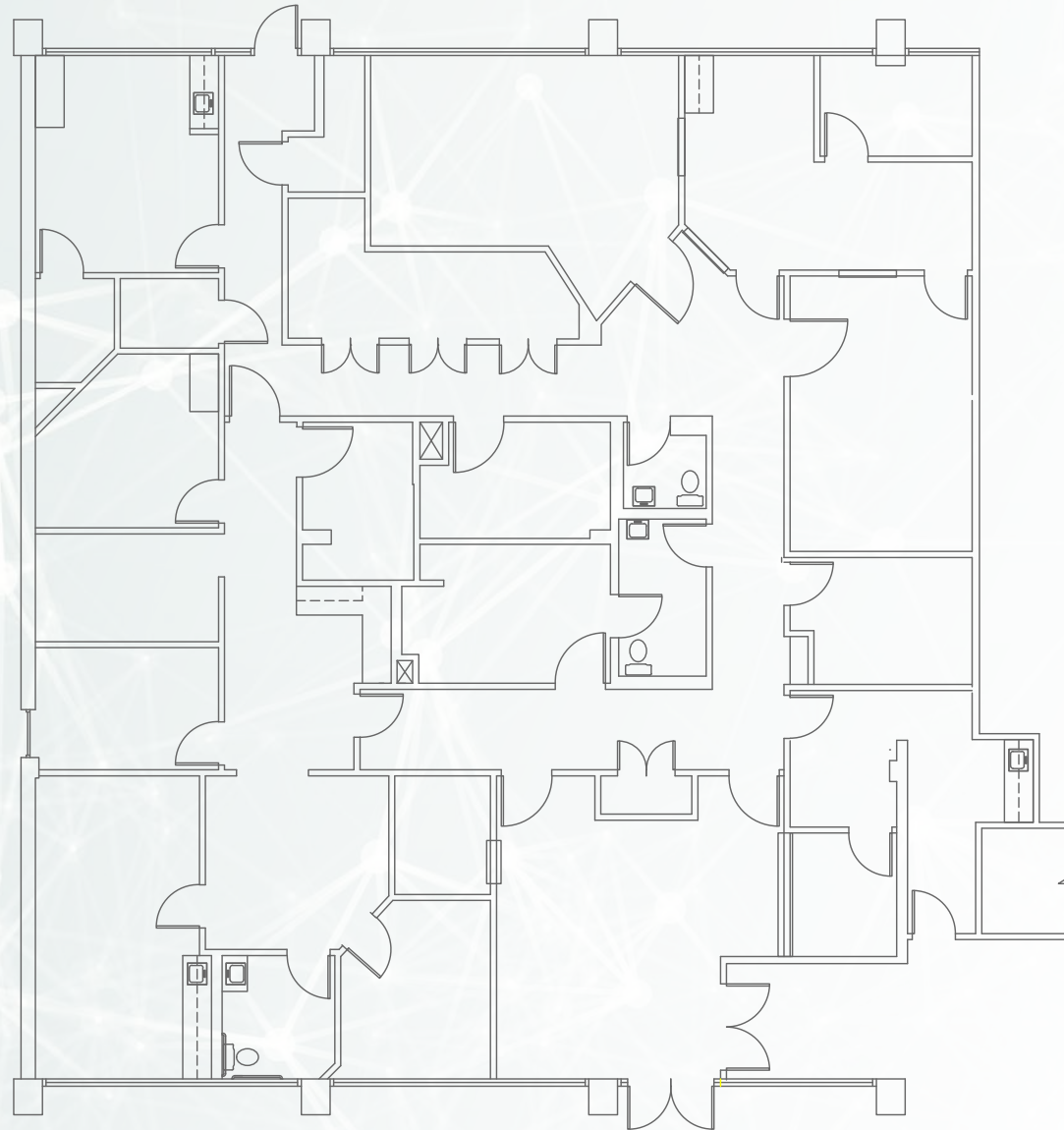
SUITE	SF	AVAILABLE
102	5,125 RSF	Available now
105	1,166 RSF	Available now
265	2,158 RSF	5/1/2026
285	1,270 RSF	8/1/2026
395	1,998 RSF	Available now



# Available Suites for Lease

1st floor

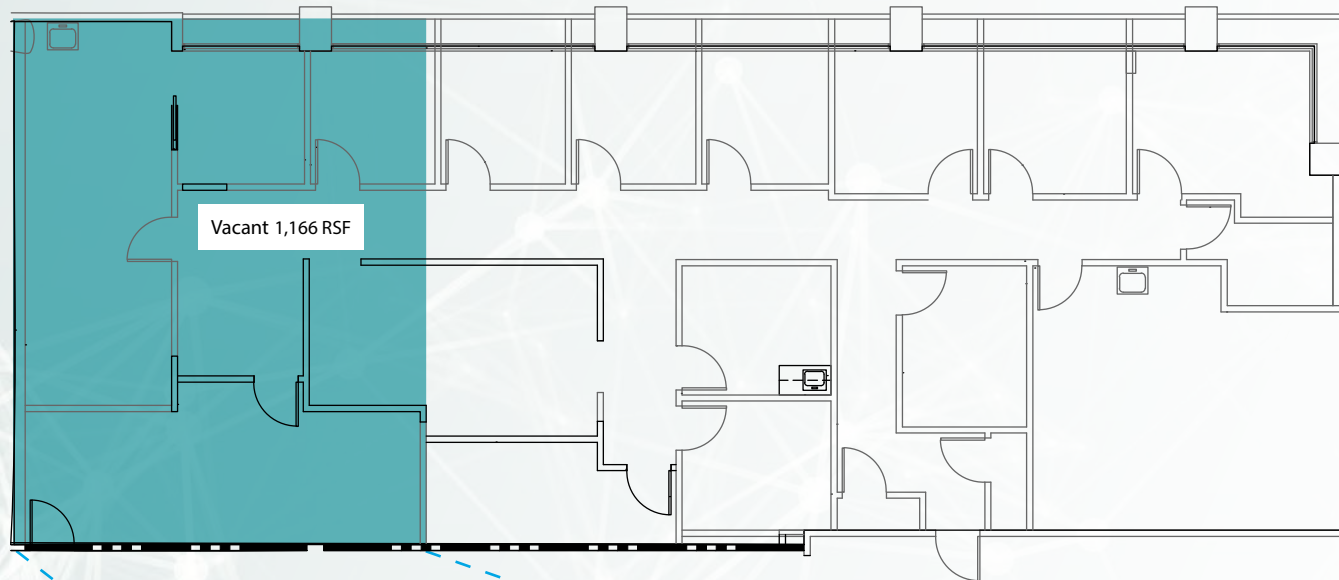
102 5,125 RSF



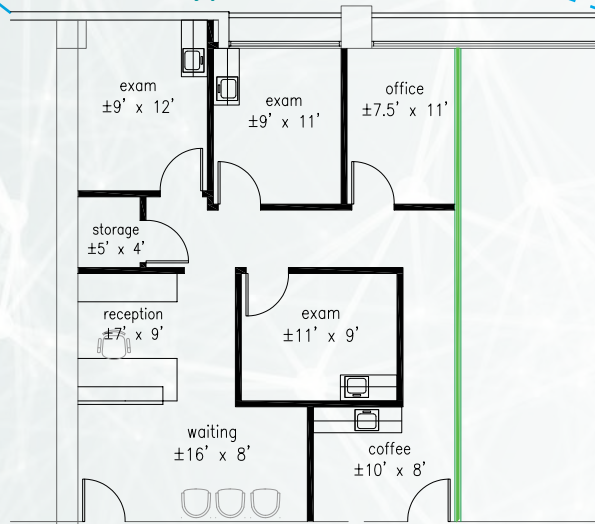
# Available Suites for Lease

1st floor

105 1,166 RSF



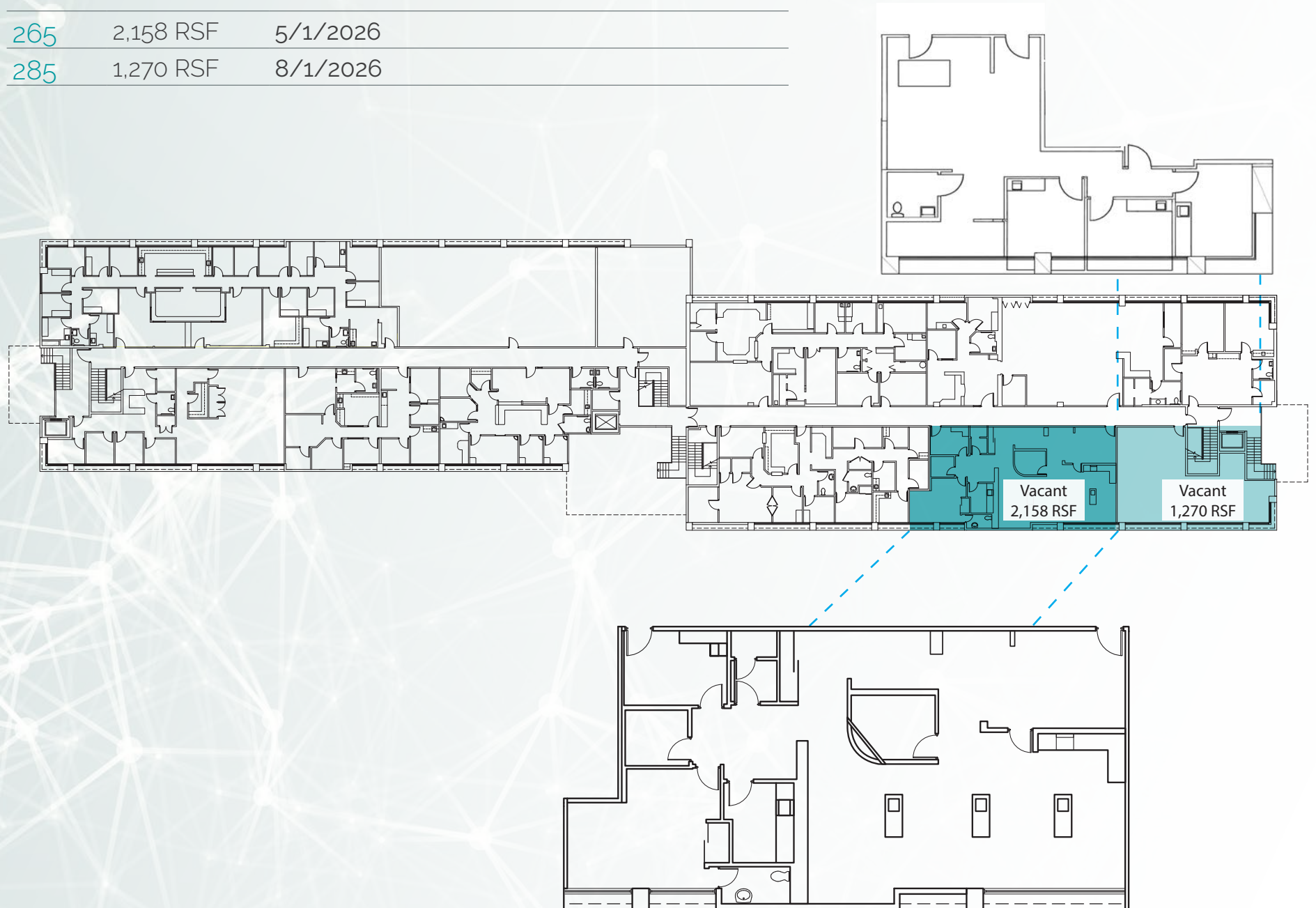
Hypothetical Plan



# Available Suites for Lease

2nd floor

265	2,158 RSF	5/1/2026
285	1,270 RSF	8/1/2026

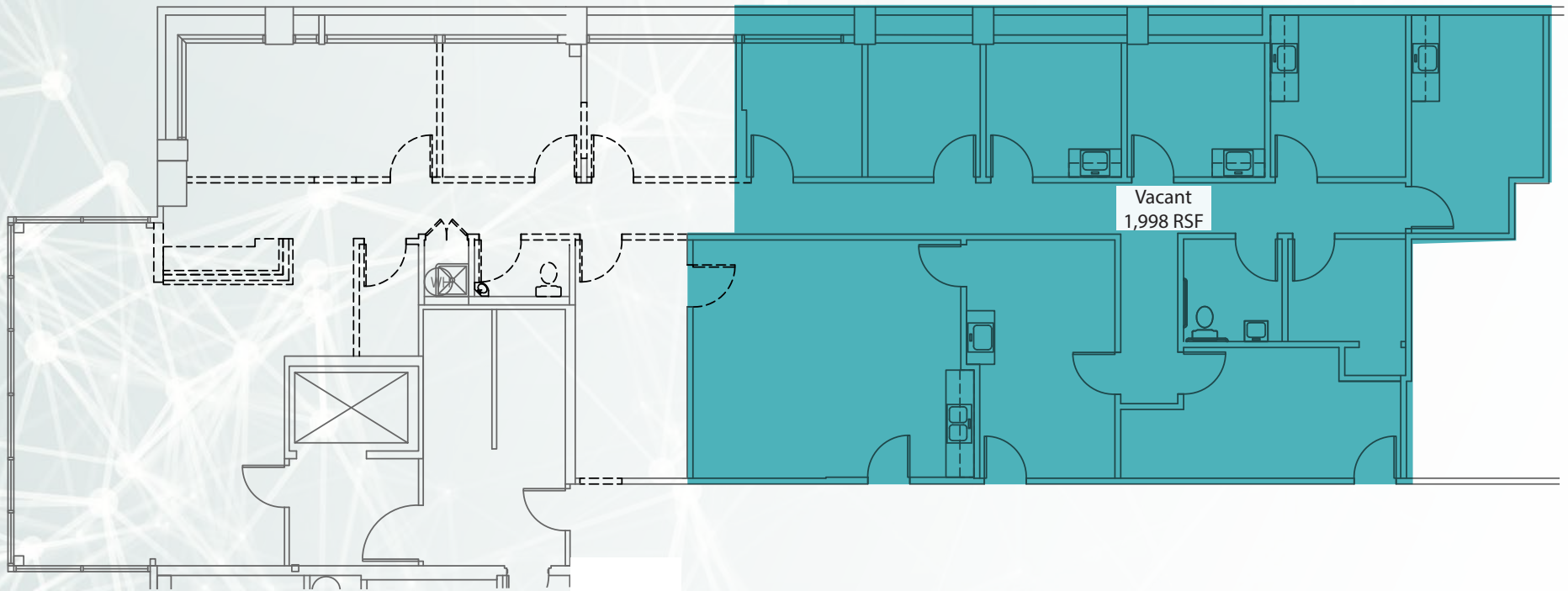


# Available Suites for Lease

3rd floor

395

1,998 RSF



# Aerial Map

## Fletcher Parkway Medical Center

### KEY TENANTS

- Sharp Healthcare
- Grossmont Surgery Center
- Grossmont Imaging
- Quest Laboratory
- Physical Therapy
- Pediatrics
- Audiology
- Dental

Grossmont Transit Center

Sharp Grossmont Hospital



macy's

Cinema

BARNES & NOBLE  
BOOKSELLERS

WALMART

TRADER JOE'S



# Fletcher Parkway Medical Center

8881 FLETCHER PARKWAY  
LA MESA, CA

## LARS EISENHAUER

Lic. 01372911

+1 760 438 8534

[lars.eisenhauer@cbre.com](mailto:lars.eisenhauer@cbre.com)

## DAN HENRY

Lic. 02035998

+1 760 438 8569

[dan.henry@cbre.com](mailto:dan.henry@cbre.com)

# CBRE

CBRE, INC  
Broker Lic. 00409987



© 2026 CBRE, Inc. All rights reserved. This information has been obtained from sources believed reliable but has not been verified for accuracy or completeness. CBRE, Inc. makes no guarantee, representation or warranty and accepts no responsibility or liability as to the accuracy, completeness, or reliability of the information contained herein. You should conduct a careful, independent investigation of the property and verify all information. Any reliance on this information is solely at your own risk. CBRE and the CBRE logo are service marks of CBRE, Inc. All other marks displayed on this document are the property of their respective owners, and the use of such marks does not imply any affiliation with or endorsement of CBRE. Photos herein are the property of their respective owners. Use of these images without the express written consent of the owner is prohibited. 2.23.26\_BSO

