

26054 Acero

Mission Viejo, CA 92691

Property Features

- + Suite 200: ±3,750 SF of second story office
- + Fully furnished “Plug & Play”
- + Mix of private offices and open area
- + Large and small conference rooms
- + ±4:1,000 parking ratio
- + Walking distance to retail amenities
- + Extensive landscaping
- + Minutes to the shops at Mission Viejo
- + Close proximity to the 5 freeway

Contact Us

Keith Black

Vice President

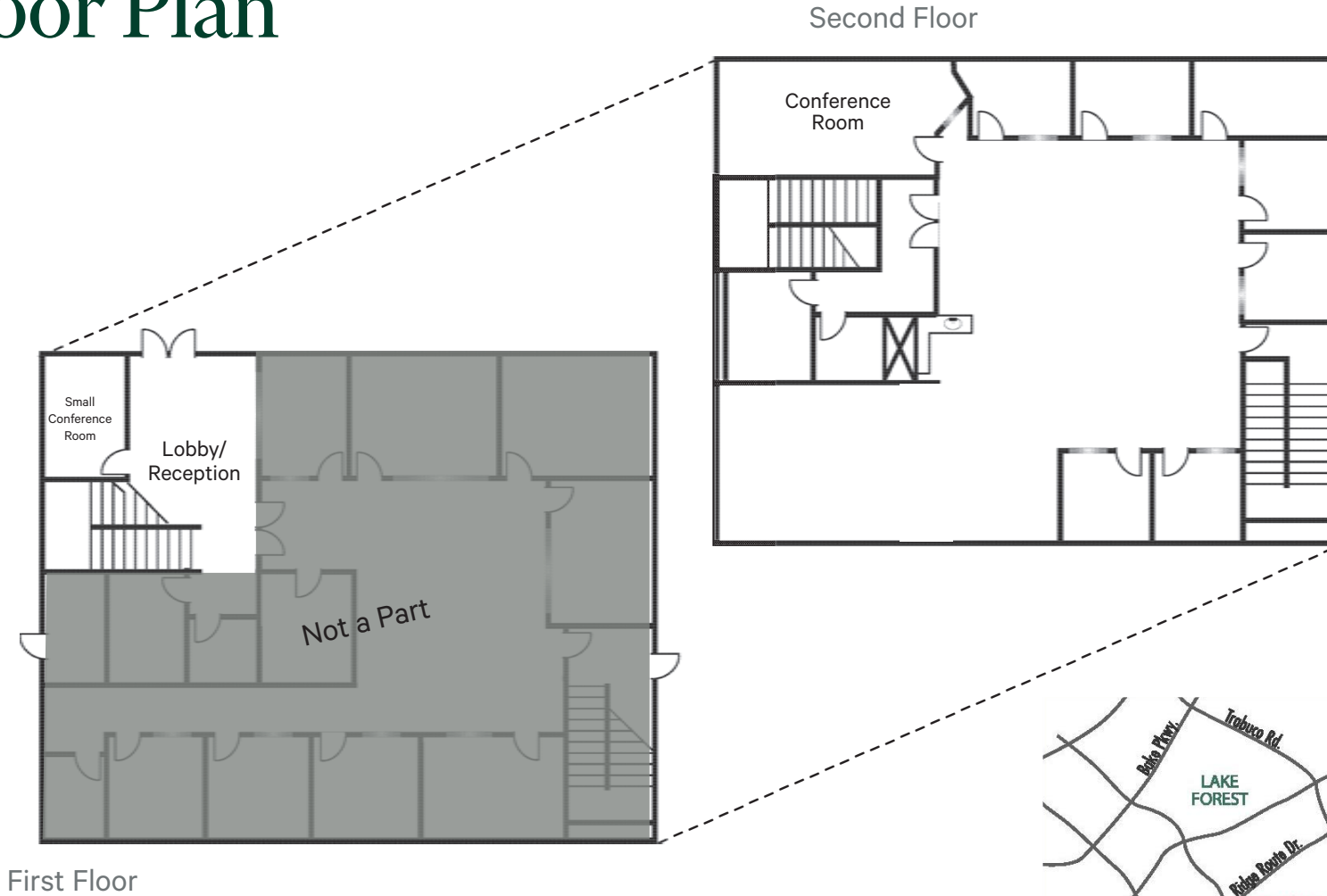
+1 949 725 8633

keith.black@cbre.com

Lic. 01266477



Floor Plan



First Floor

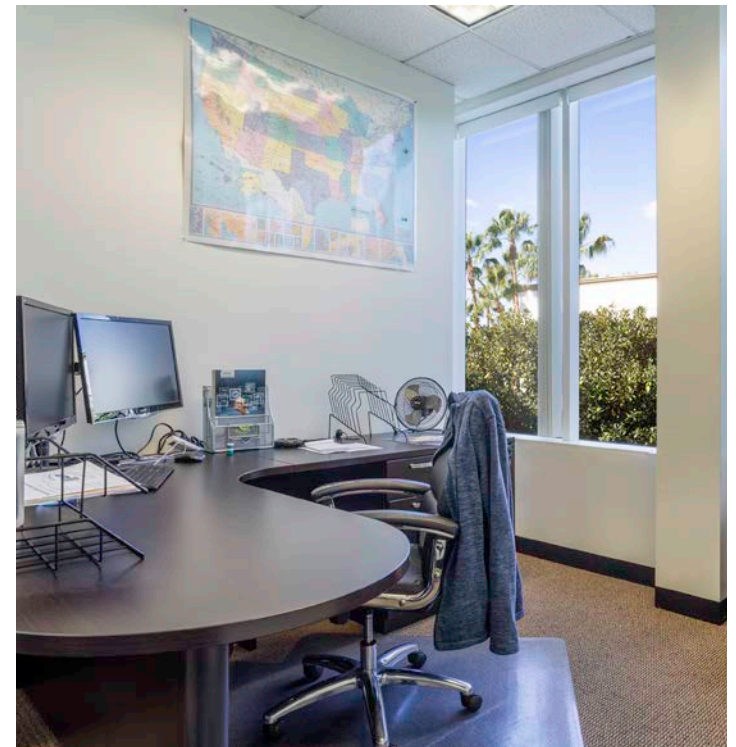
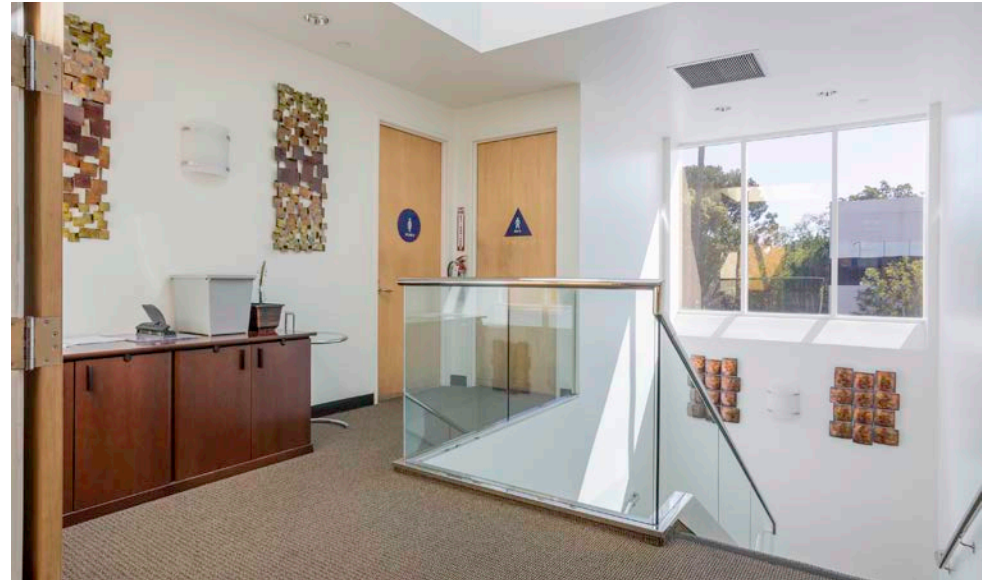
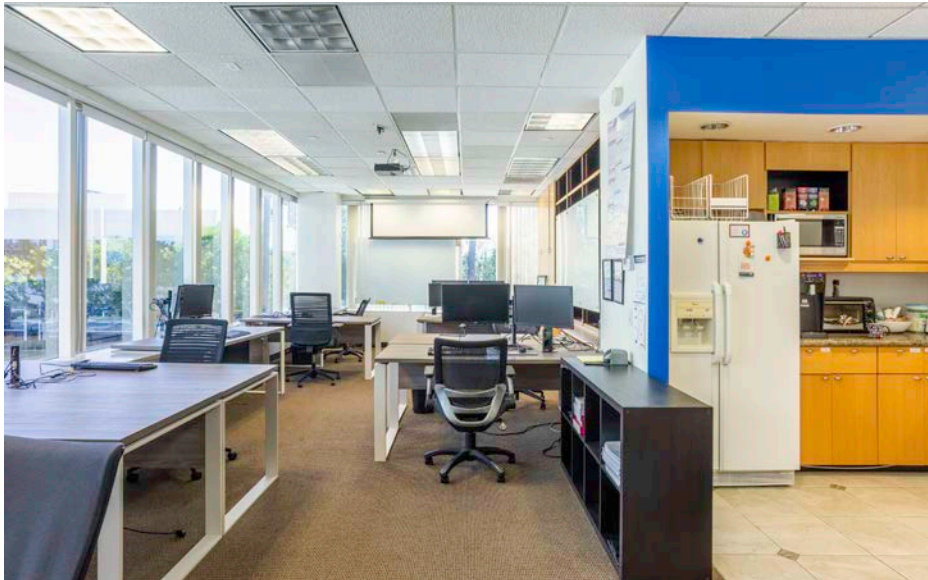
Second Floor

Location Map



Alicia Park
26054 Acero | Mission Viejo, CA 92691

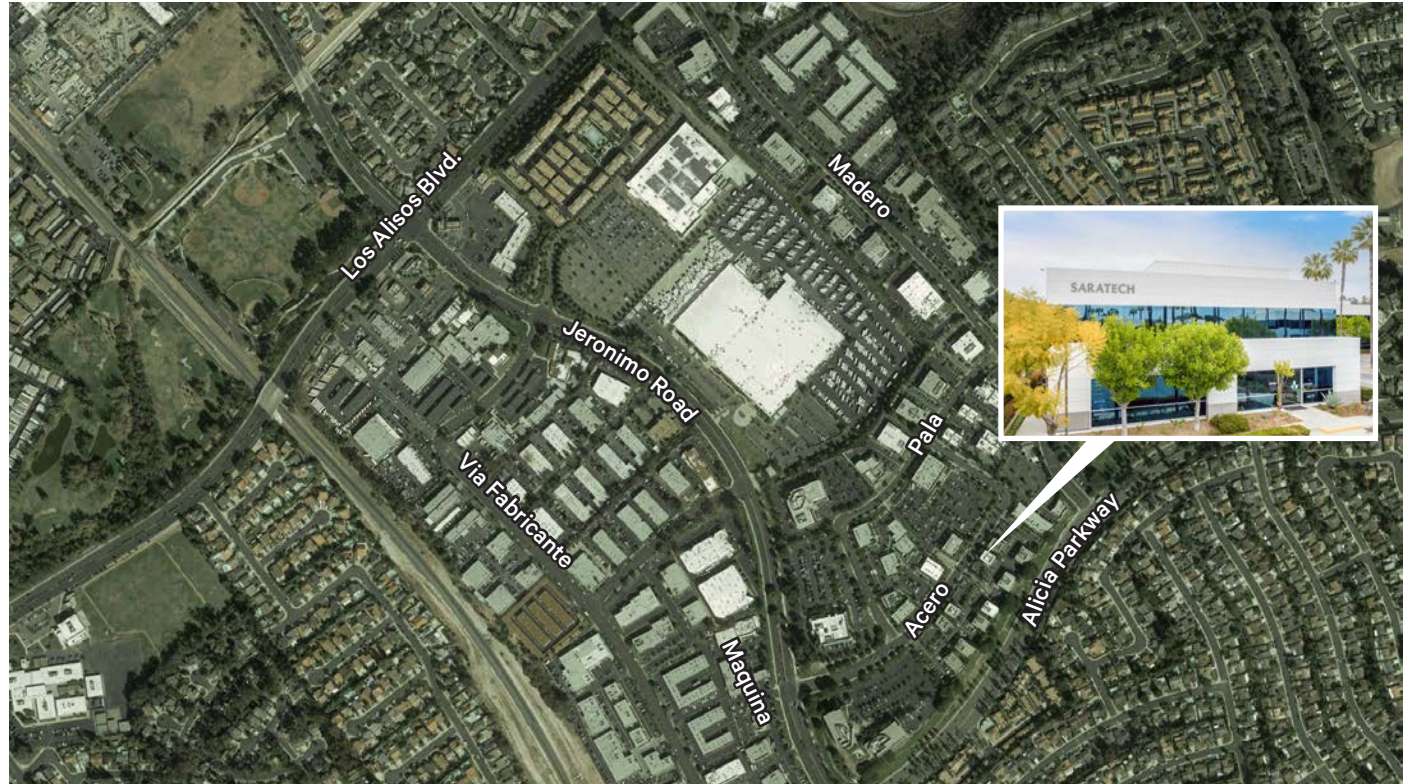
For Lease



Alicia Park

26054 Acero | Mission Viejo, CA 92691

For Lease



Contact Us

Keith Black

Vice President
+1 949 725 8633
keith.black@cbre.com
Lic. 01266477

© 2024 CBRE, Inc. All rights reserved. This information has been obtained from sources believed reliable but has not been verified for accuracy or completeness. CBRE, Inc. makes no guarantee, representation or warranty and accepts no responsibility or liability as to the accuracy, completeness, or reliability of the information contained herein. You should conduct a careful, independent investigation of the property and verify all information. Any reliance on this information is solely at your own risk. CBRE and the CBRE logo are service marks of CBRE, Inc. All other marks displayed on this document are the property of their respective owners, and the use of such marks does not imply any affiliation with or endorsement of CBRE. Photos herein are the property of their respective owners. Use of these images without the express written consent of the owner is prohibited.

CBRE