



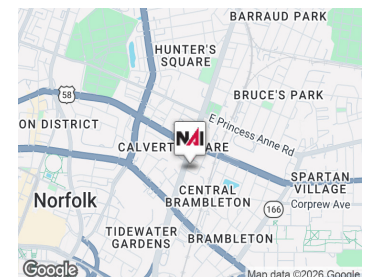
Tidewater Drive Business Center
850 Tidewater Drive Norfolk, Virginia 23504

Property Highlights

- Modern open floor plan design
- Ample natural light throughout
- Secure access and 24/7 building security
- State-of-the-art HVAC and climate control systems
- On-site parking for tenants and visitors
- Accessible location with major roadways nearby
- Customizable office spaces to fit your needs
- Ideal space for administrative and service oriented business

Amenities

- Reserve Parking
- Monument Signage



Offering Summary

Lease Rate:	\$19.00 SF/yr (MG)
Building Size:	23,108 SF
Available SF:	3,000 SF
Lot Size:	1.6 Acres

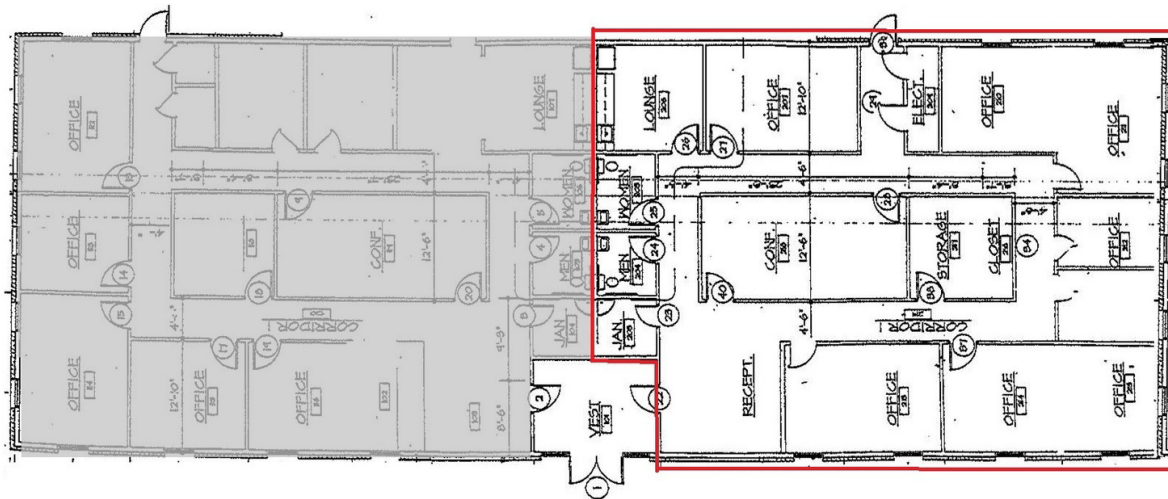
For More Information

Patrick L. Reynolds, CCIM, SIOR
O: 757 216 8438
patrickreynolds@naidominion.com

FLYER

850 Tidewater Drive, Norfolk, VA 23504

We obtained the information above from sources we believe to be reliable. However, we have not verified its accuracy and make no guarantee, warranty or representation about it. It is submitted subject to the possibility of errors, omissions, change of price, rental or other conditions, prior sale, lease or financing, or withdrawal without notice. We include projections, opinions, assumptions or estimates for example only, and they may not represent current or future performance of the property. You and your tax and legal advisors should conduct your own investigation of the property and transaction.



850 TIDEWATER DRIVE
SUITE A

850 TIDEWATER DRIVE
SUITE B



Map data ©2026 Google Imagery ©2026 Airbus, Maxar Technologies

FLYER

850 Tidewater Drive, Norfolk, VA 23504

We obtained the information above from sources we believe to be reliable. However, we have not verified its accuracy and make no guarantee, warranty or representation about it. It is submitted subject to the possibility of errors, omissions, change of price, rental or other conditions, prior sale, lease or financing, or withdrawal without notice. We include projections, opinions, assumptions or estimates for example only, and they may not represent current or future performance of the property. You and your tax and legal advisors should conduct your own investigation of the property and transaction.