



3295 El Camino Real

Atherton, California

PROPERTY OVERVIEW

PREEMINENT ATHERTON OFFICE OPPORTUNITY

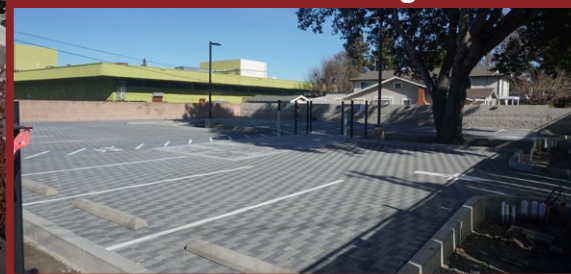
HIGHLIGHTS

- ±8,600 SF Newly Remodeled Facility
- High-end Creative Finishes
- Versatile Open Office Layout
- Fully Built out Kitchenette
- High Visibility Location
- Rare Atherton Address
- Tenant Improvements Available
- Private 19 Car Parking Lot
- Beautiful Indoor Courtyard
- Close to Downtown RWC and Menlo Park
- Local/Responsive Ownership

TERMS

- Flexible Term Lengths
- Call For Rate

New 19 Car Parking Lot



LEASE OPPORTUNITY → ±8,600 SF REMODELED OFFICE SPACE AVAILABLE

3295 El Camino Real, Atherton



CONTACT US

Anthony Kamm
ak@seq-rs.com
650.888.3858
CAL DRE LIC NO. 01783456

Ryan Pegnim
rcp@seq-rs.com
650.346.9820
CAL DRE LIC NO. 01478696

Frank Orrell
fo@seq-rs.com
650.302.4775
CAL DRE LIC NO. 01872831



LEASE OPPORTUNITY → ±8,600 SF REMODELED OFFICE SPACE AVAILABLE

3295 El Camino Real, Atherton



CONTACT US

Anthony Kamm

ak@seq-rs.com

650.888.3858

CAL DRE LIC NO. 01783456

Ryan Pegnim

rcp@seq-rs.com

650.346.9820

CAL DRE LIC NO. 01478696

Frank Orrell

fo@seq-rs.com

650.302.4775

CAL DRE LIC NO. 01872831



LEASE OPPORTUNITY → ±8,600 SF REMODELED OFFICE SPACE AVAILABLE

3295 El Camino Real, Atherton



CONTACT US

Anthony Kamm

ak@seq-rs.com

650.888.3858

CAL DRE LIC NO. 01783456

Ryan Pegnim

rcp@seq-rs.com

650.346.9820

CAL DRE LIC NO. 01478696

Frank Orrell

fo@seq-rs.com

650.302.4775

CAL DRE LIC NO. 01872831



3295 El Camino Real, Atherton



LEASE OPPORTUNITY → ±8,600 SF REMODELED OFFICE SPACE AVAILABLE

3295 El Camino Real, Atherton



A 40 minute commute from San Francisco to 3295 El Camino Real.

Conveniently located on the San Francisco Peninsula off of Highway 101. The Facility is 20 minutes south of San Francisco International Airport and Roughly 20 minutes north of San Jose International Airport. The property is located off the Woodside Road exit of Highway 101, 8 minutes to Caltrain. The location provides Easy Access to Hwy 101, 280, Woodside Rd., El Camino Real, and CalTrain.