



30 BOND STREET

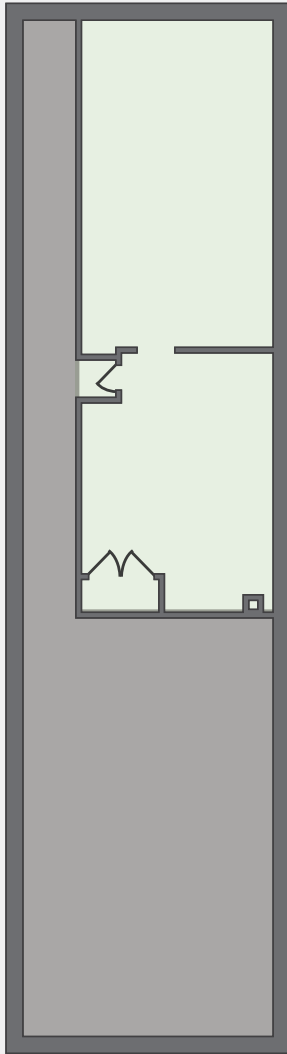
BETWEEN LAFAYETTE AND BOWERY | NOHO

Retail Property Specs

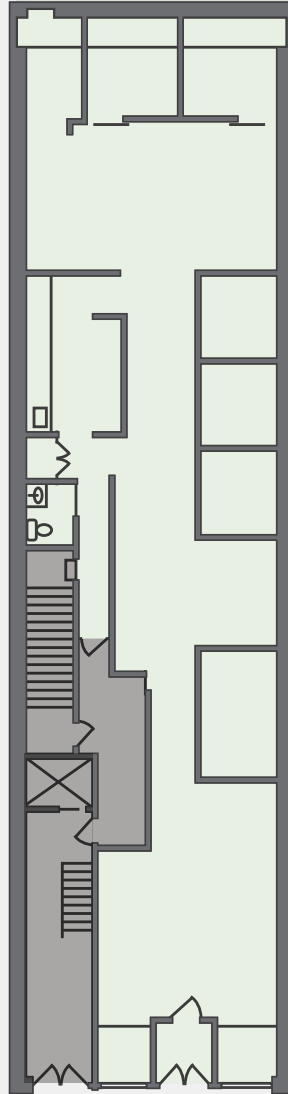
30 BOND STREET

BETWEEN LAFAYETTE AND BOWERY | NOHO

LOWER LEVEL



GROUND LEVEL



Bond Street

LOCATION

North block between Lafayette St and Bowery

SPACE

Ground Floor..... 2,050 SQFT

Lower Level 1,400 SQFT

POSSESSION

Immediate

FRONTAGE

20 feet

NEIGHBORING RETAIL

Goop
Reformation
Away
il Buco
Boglioli
A.P.C. SURPLUS
Kenneth Cole

TERM

Negotiable

ASKING RENT

Upon Request

lululemon
Showfields
Bond No. 9
C'est Beau 1872
Equinox Bond Street
Kith

DAVID JACOBI

P 212 421 3634 | M 917 992 9215 | david@premierequities.com

 PREMIER EQUITIES



Goop



Il Buco



Boglioli



Kith