



Sublease Available

Mission City

2385 Northside Drive
San Diego, CA 92108

Overview

Premises:	20,000-30,644 RSF on the 3rd Floor
Rental Rate:	\$2.50/SF, Plus Utilities
Availability:	30 Days
Term:	Thru 9/30/2027 or 9/30/2030 (longer term available on a direct basis)
Submarket:	Mission Valley
Built:	2007
Parking:	4/1,000 RSF

Features

- Fully furnished
- High-end buildout
- Natural light
- Secure space

For more information:



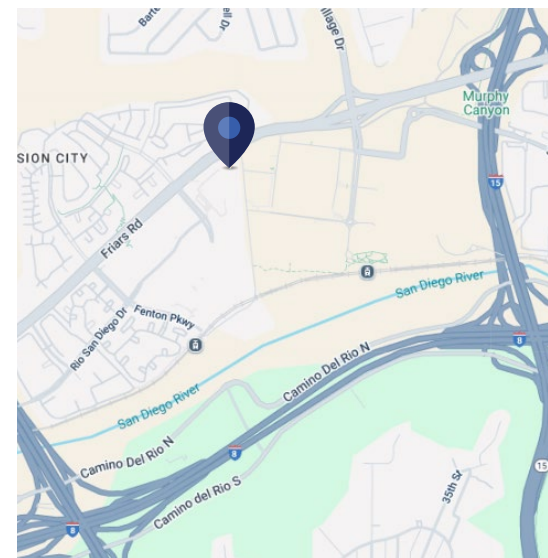
Tommy Friedrich
760.419.3342
tfriedrich@cresa.com



Sam Heiber
202.783.3889
sheiber@cresa.com



Ben Lowe
202.887.6525
blowe@cresa.com



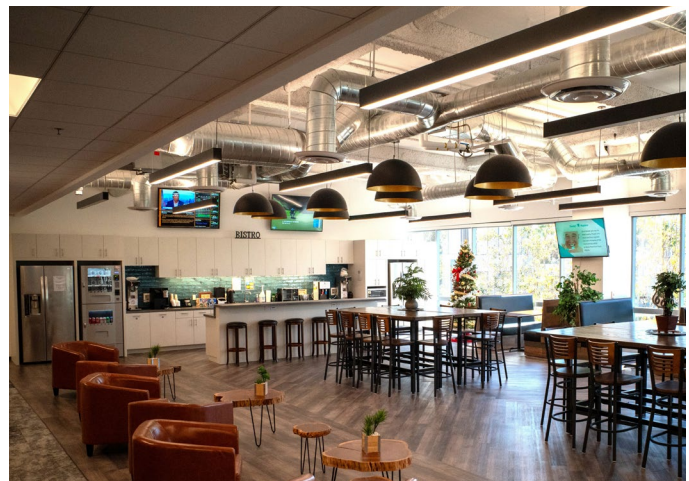
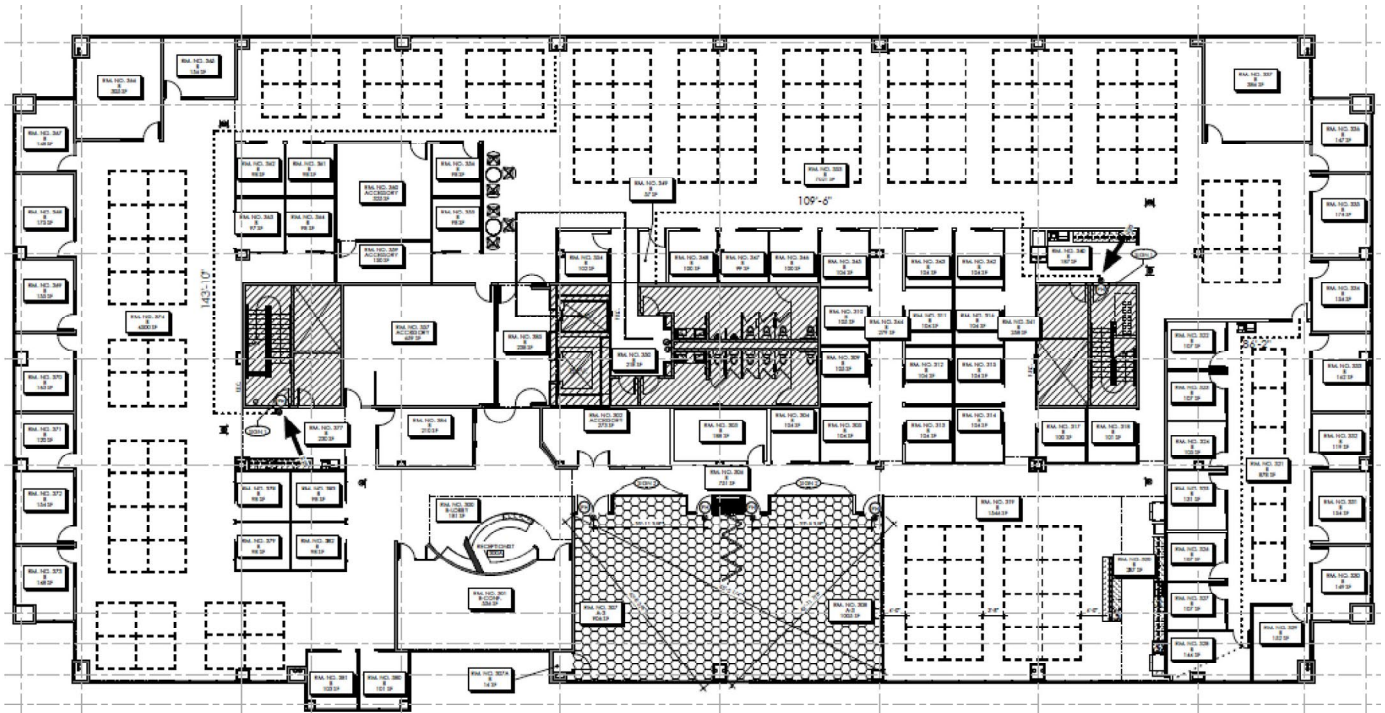
Sublease Available



Mission City

2385 Northside Drive
San Diego, CA 92108

3rd Floor



For more information:



Tommy Friedrich
760.419.3342
tfriedrich@cresa.com



Sam Heiber
202.783.3889
sheiber@cresa.com



Ben Lowe
202.887.6525
blowe@cresa.com

Cresa
2051 San Elijo Avenue
Cardiff, CA 92007

Sublease Available



Mission City

2385 Northside Drive
San Diego, CA 92108

3rd Floor

