



21059

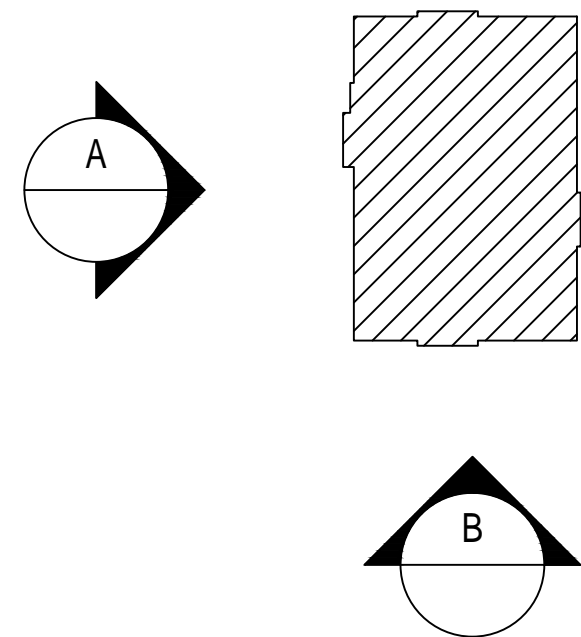
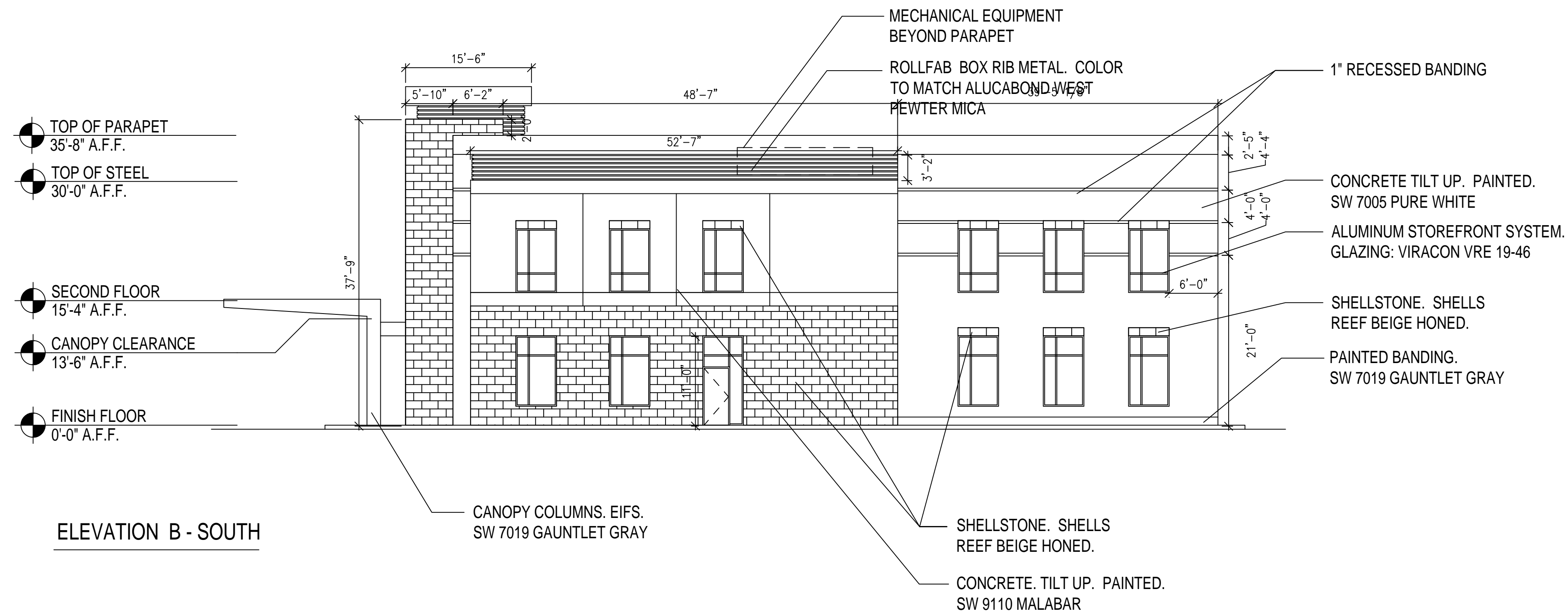
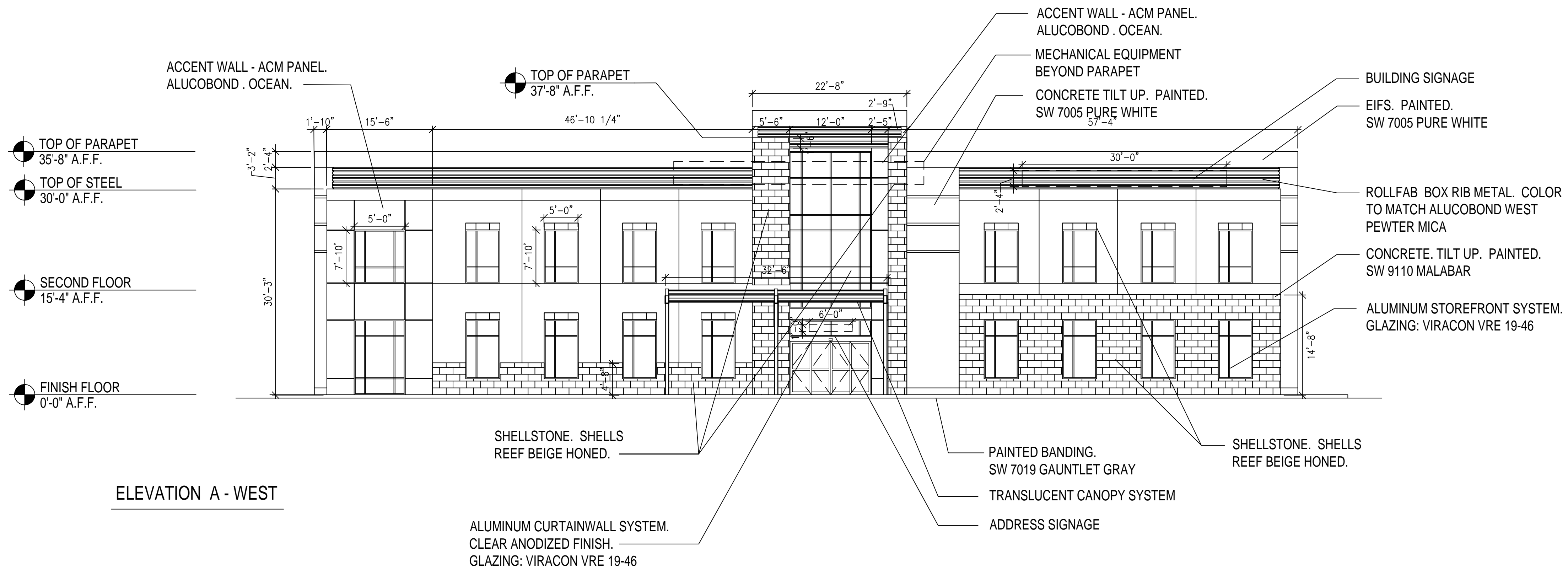
DAVIS STOKES COLLABORATIVE, P.C.  
**DSC** ARCHITECTS

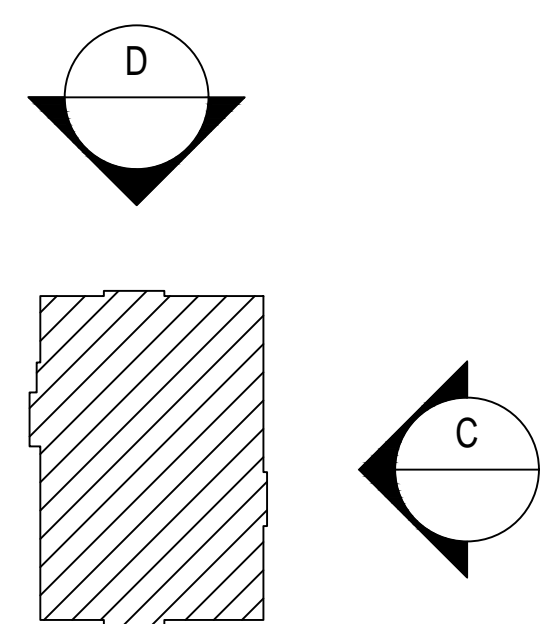
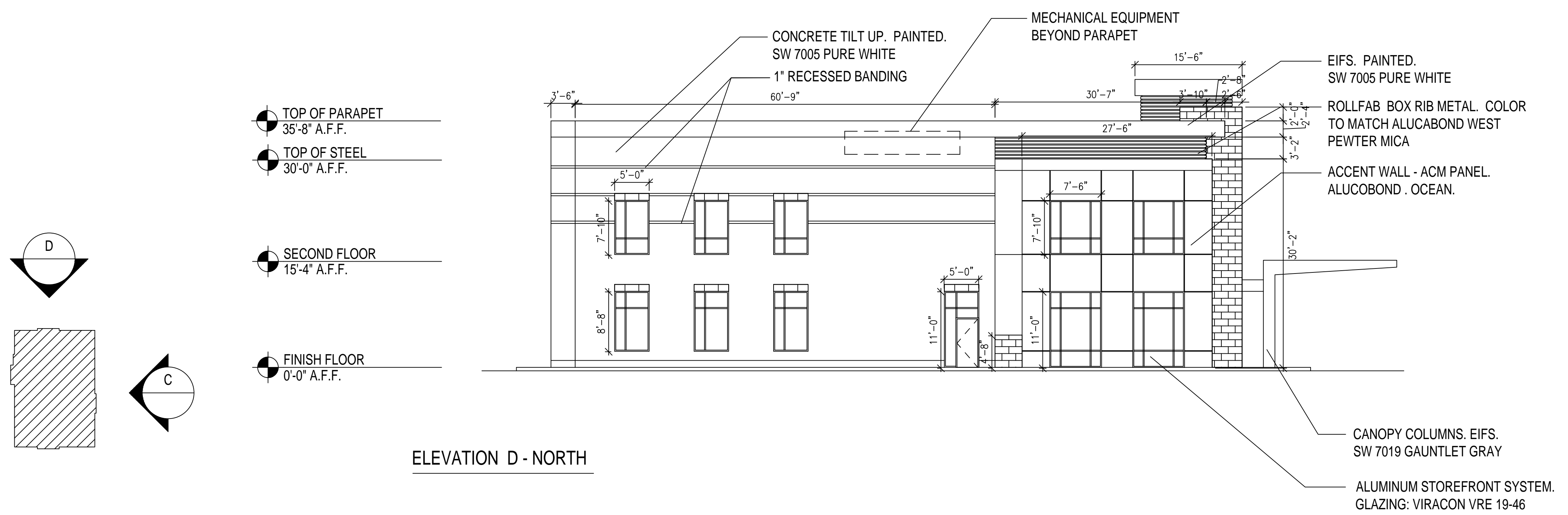
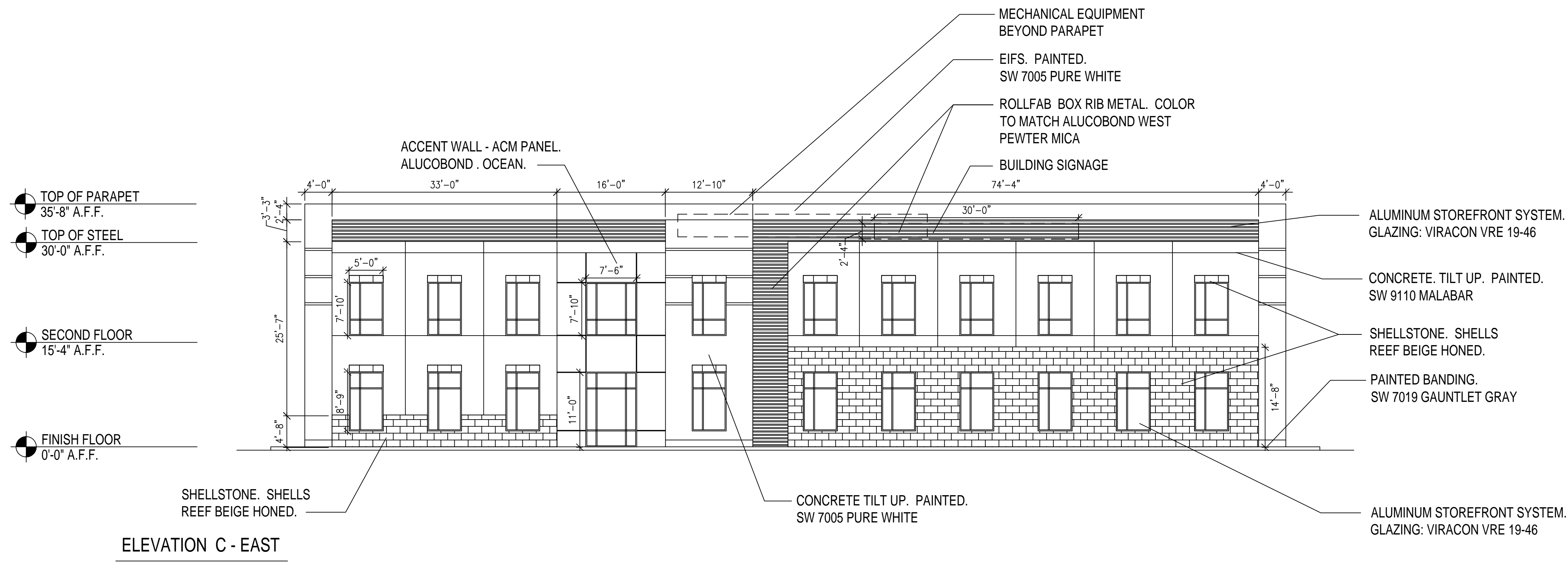
## HEALTH PARK AT AVENIR - MEDICAL OFFICE - BUILDING 3

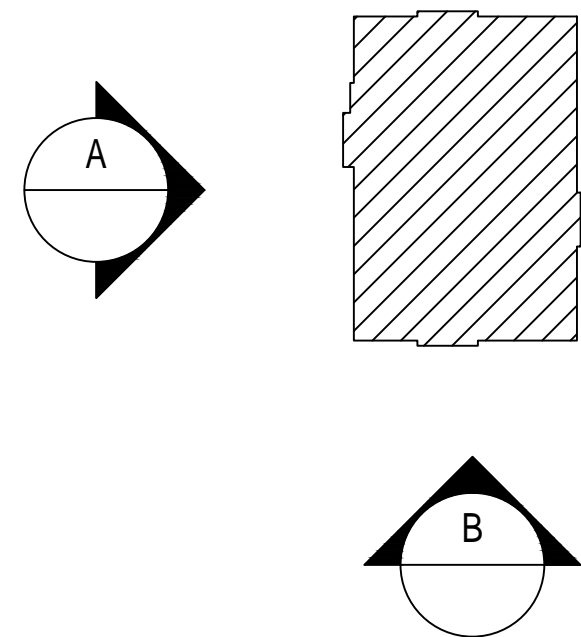
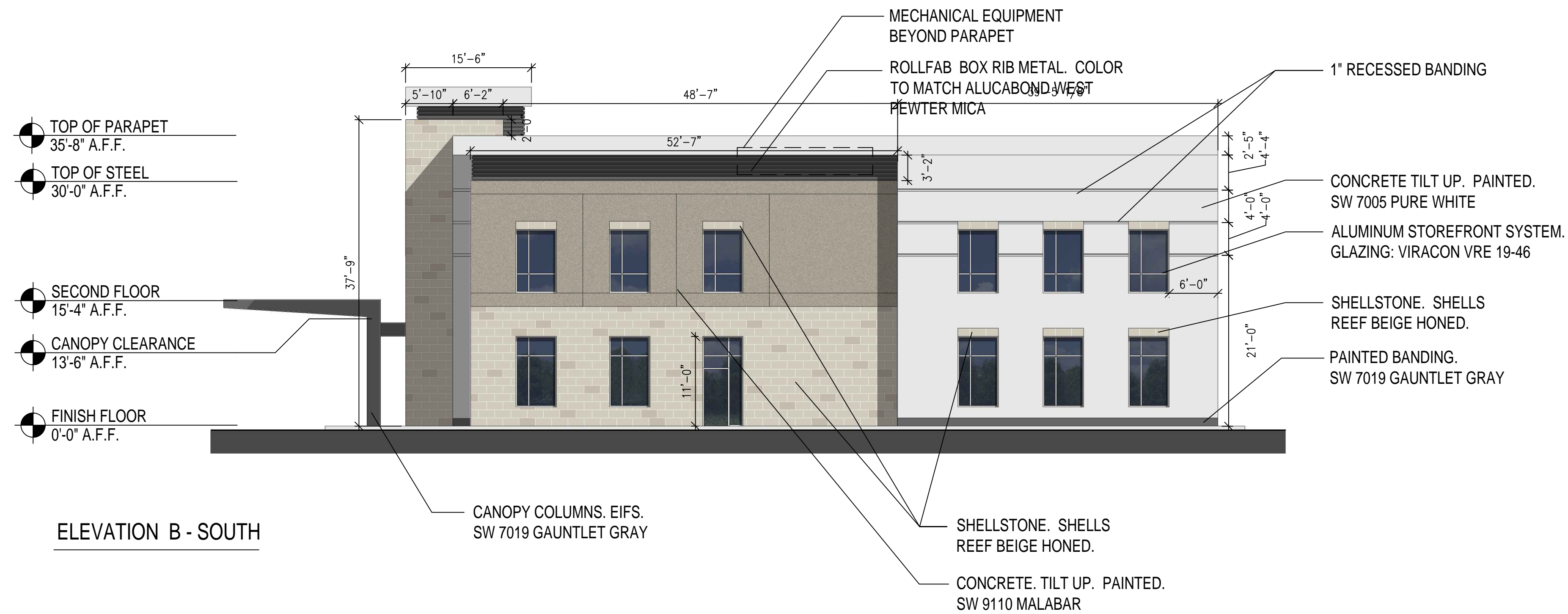
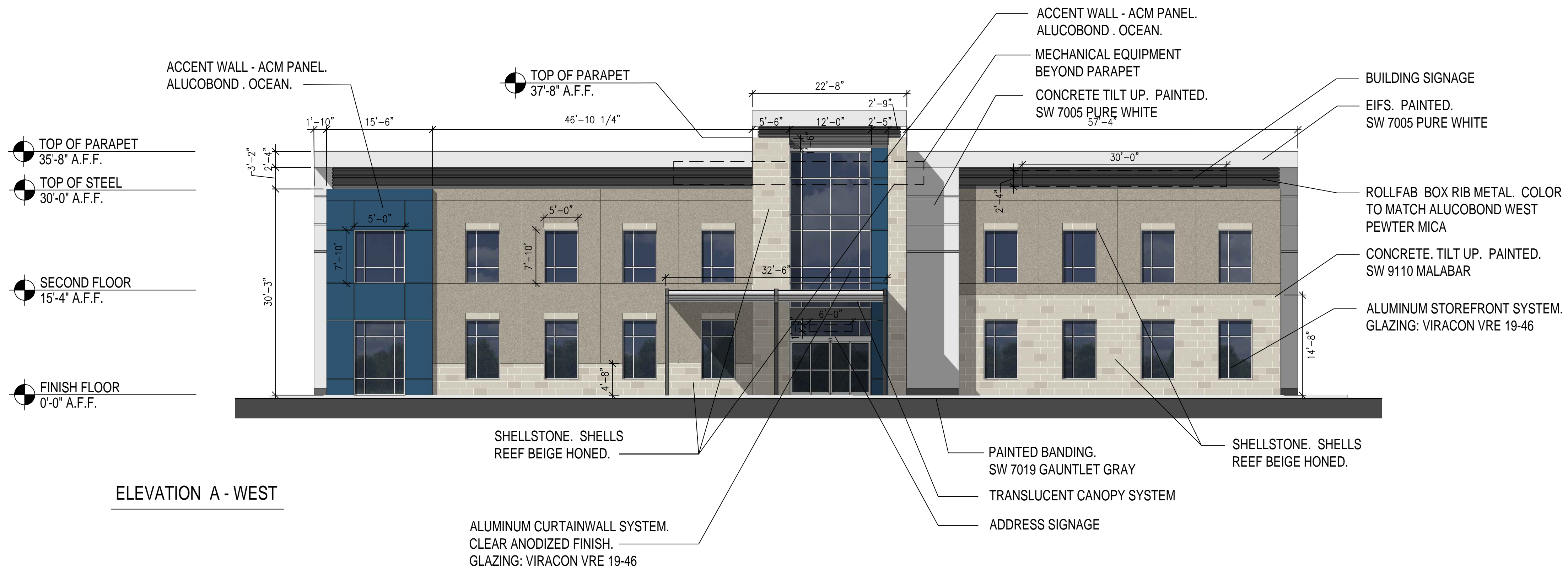
Palm Beach Gardens, Florida

10.10.23

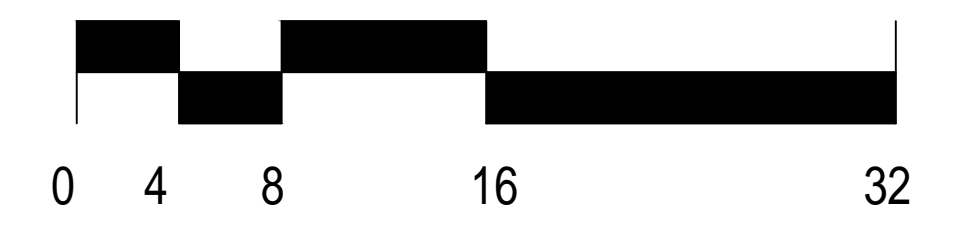
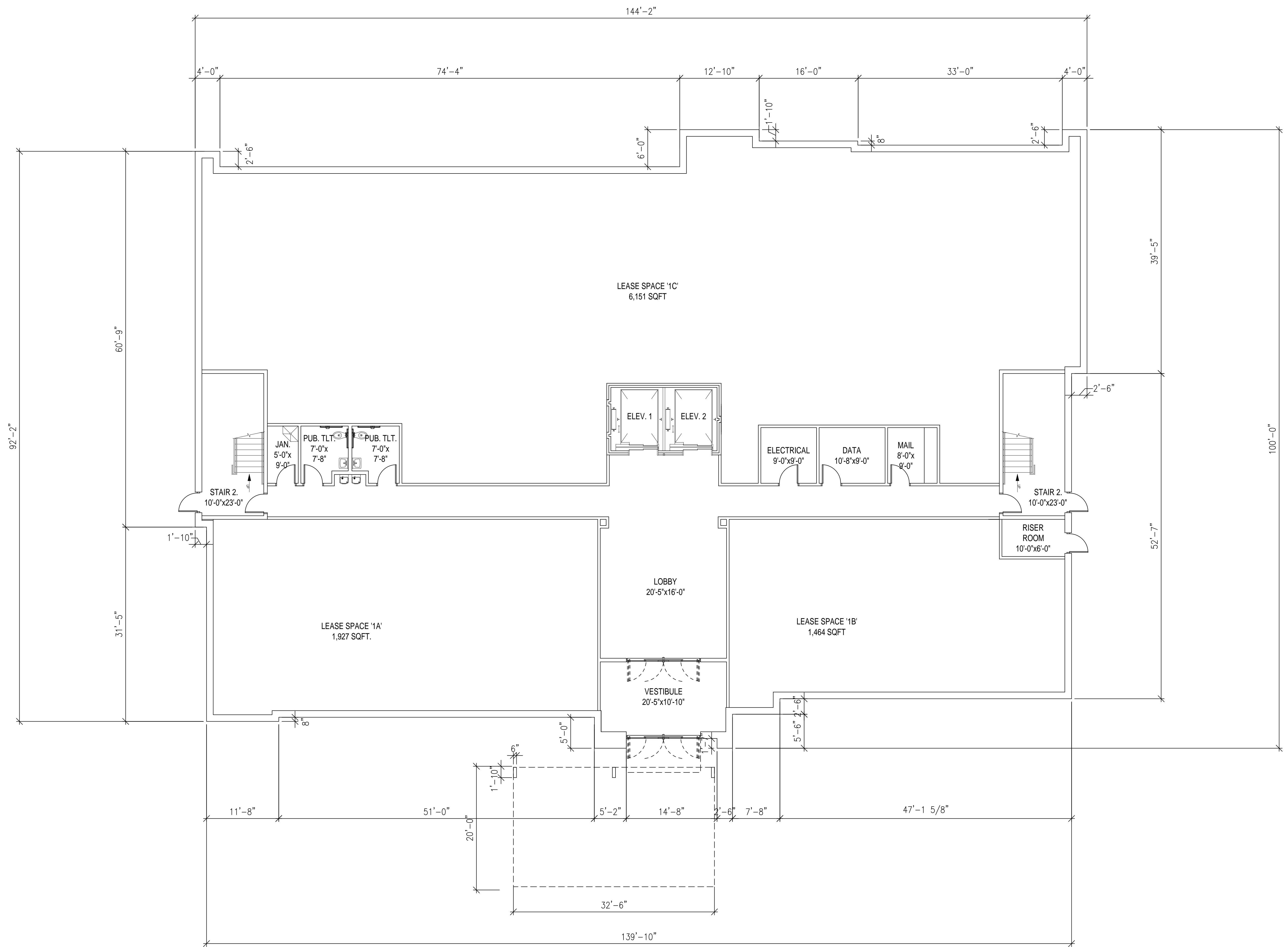
Schematic Rendering



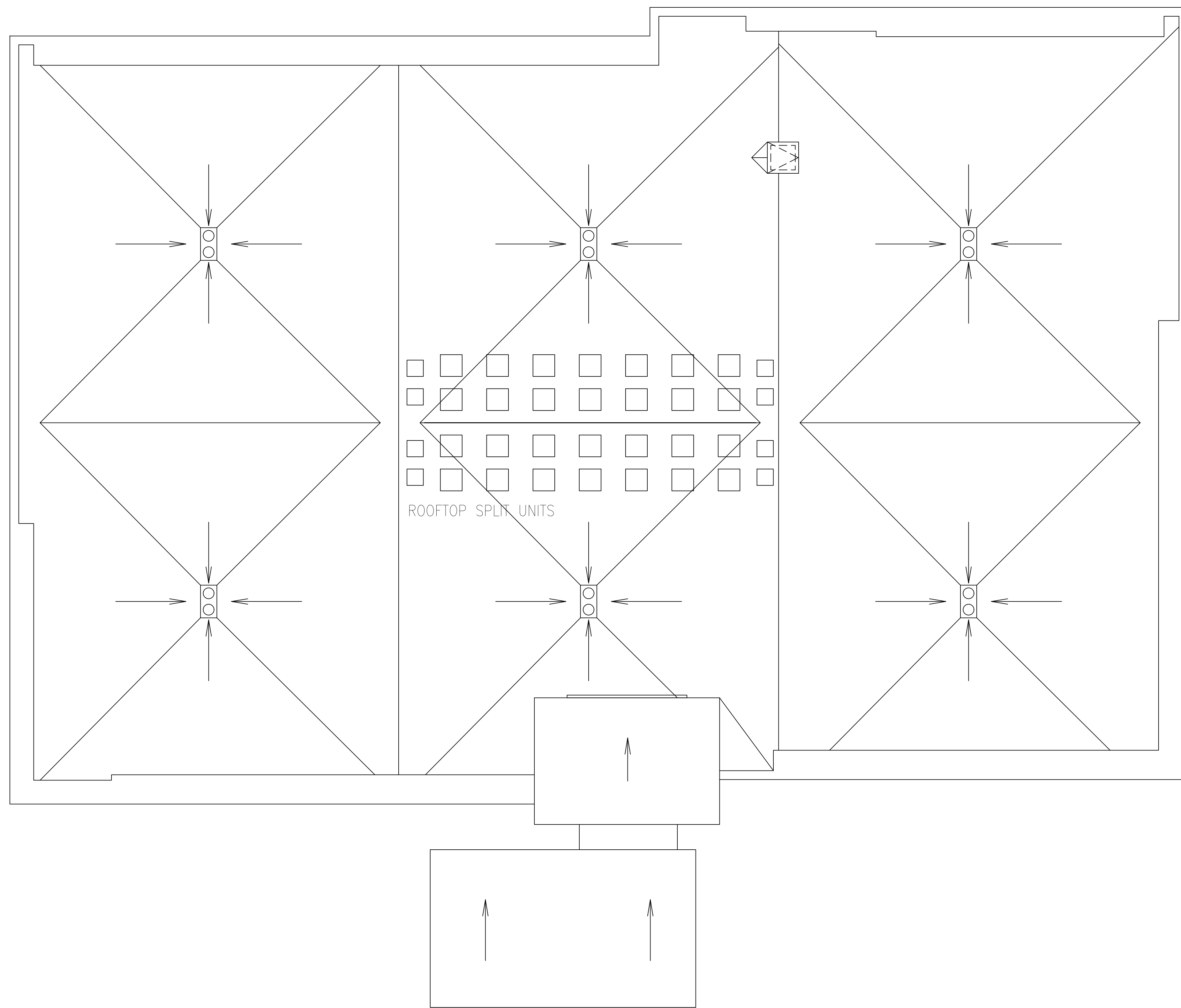






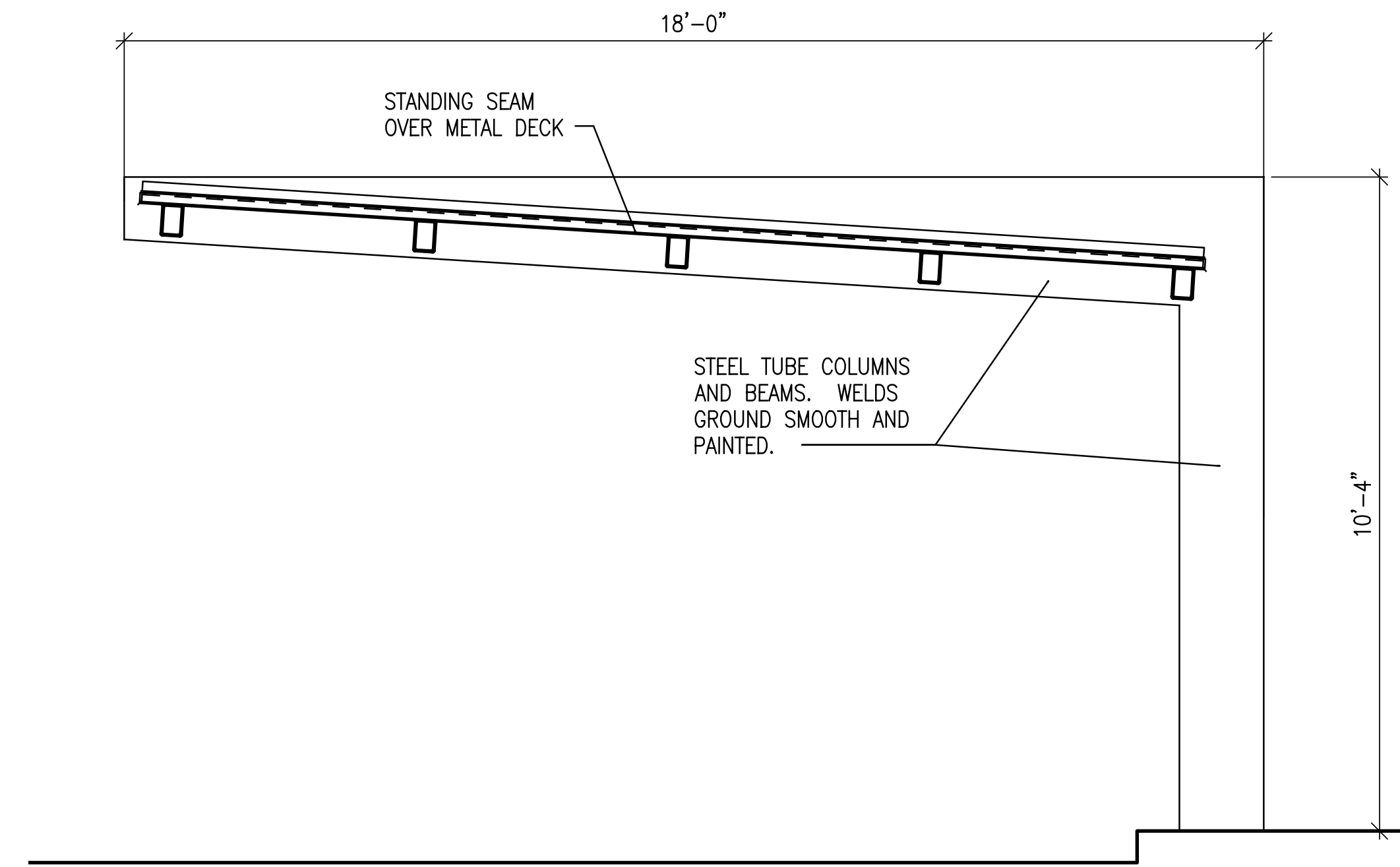






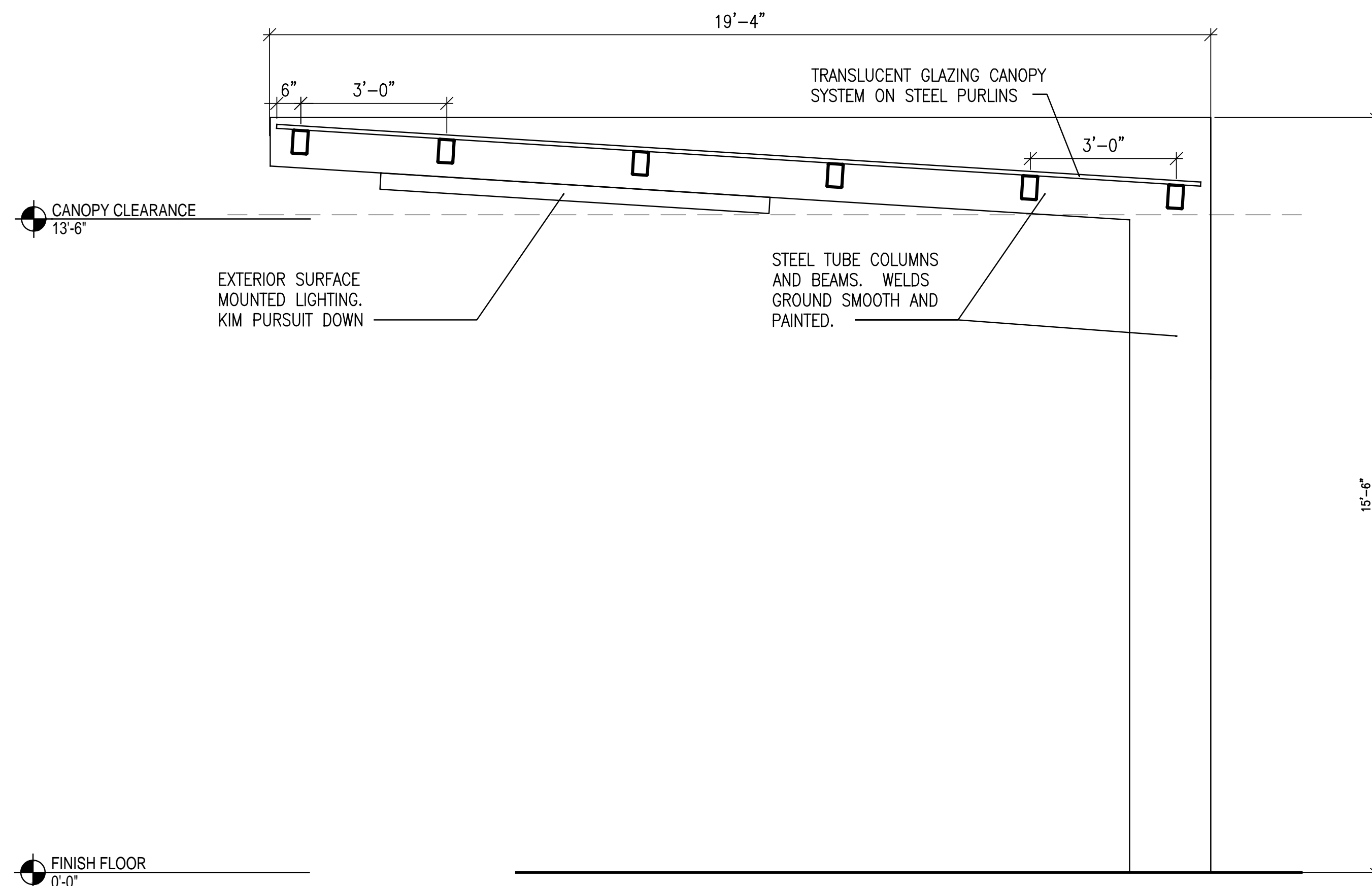
ROOFTOP SPLIT UNITS



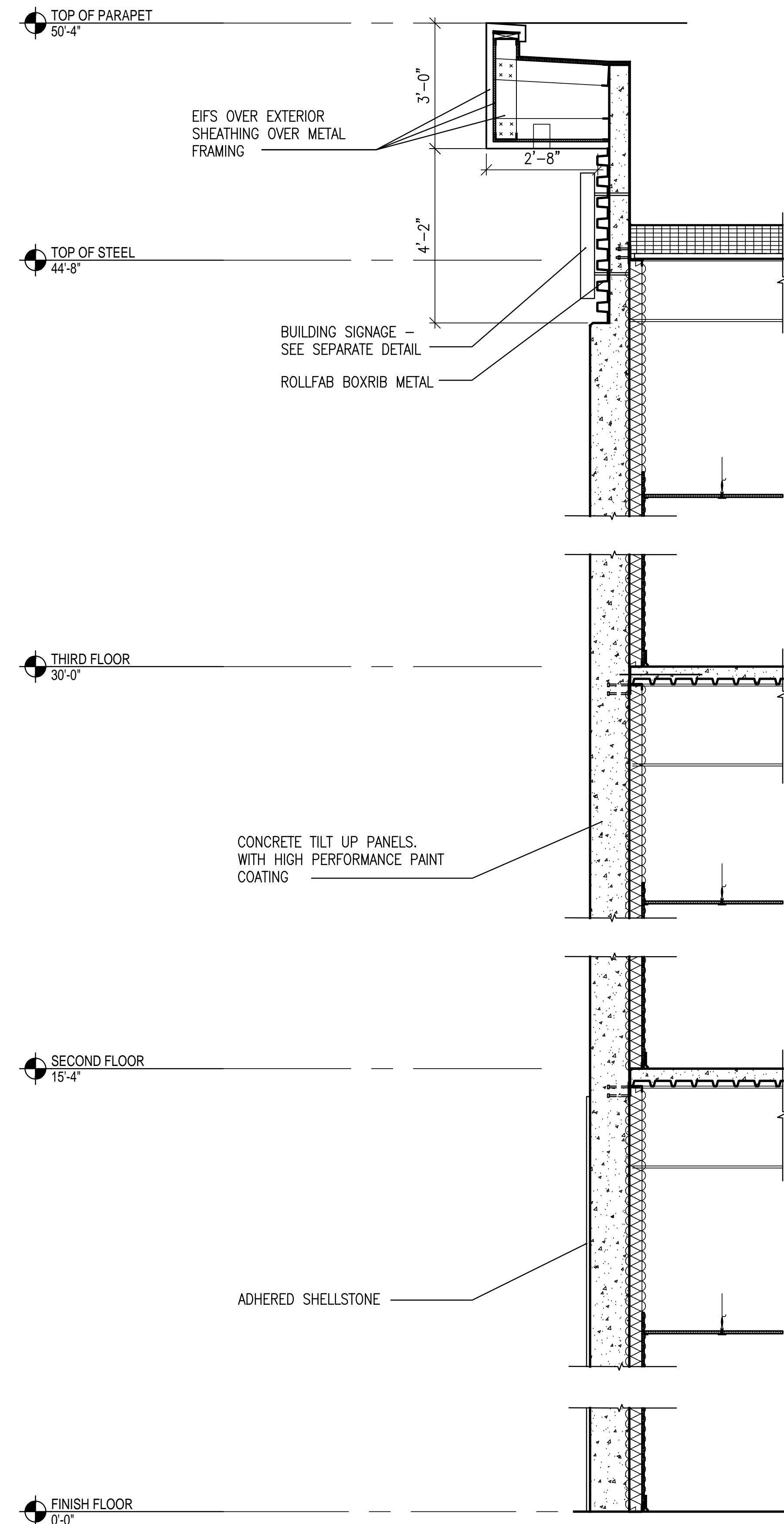


SECTION THROUGH PARKING CANOPY

TRANSLUCENT SYSTEM CONSIST OF 16MM POLYCARBONATE GLAZING PANELS SET IN ALUMINUM FRAMING BY CPI DAYLIGHTING



SECTION THROUGH DRIVE CANOPY



SECTION THROUGH TYPICAL WALL

- GENERAL NOTES:
- MEDICAL OFFICE BUILDING CONSTRUCTION CONCRETE TILT UP STRUCTURE AND METAL STUDS.
  - ALL MATERIALS TO MEET HIGH VELOCITY WIND ZONE REQUIREMENTS

