

# Individual Office in Century City for Shared Sublease

1801 Century Park East  
Los Angeles, CA 90067  
19<sup>th</sup> Floor



**Available** Interior Office  
± 16' x 12.5'

**Asking Rent** \$1,500/month

**Term** Negotiable

- Office Available Immediately
- Furniture Included
- Shared Reception, Conference Room & Kitchen
- Convenient Access to Westfield Century City
- Law Firm is the Sublessor
- Perfect for a Legal Professional



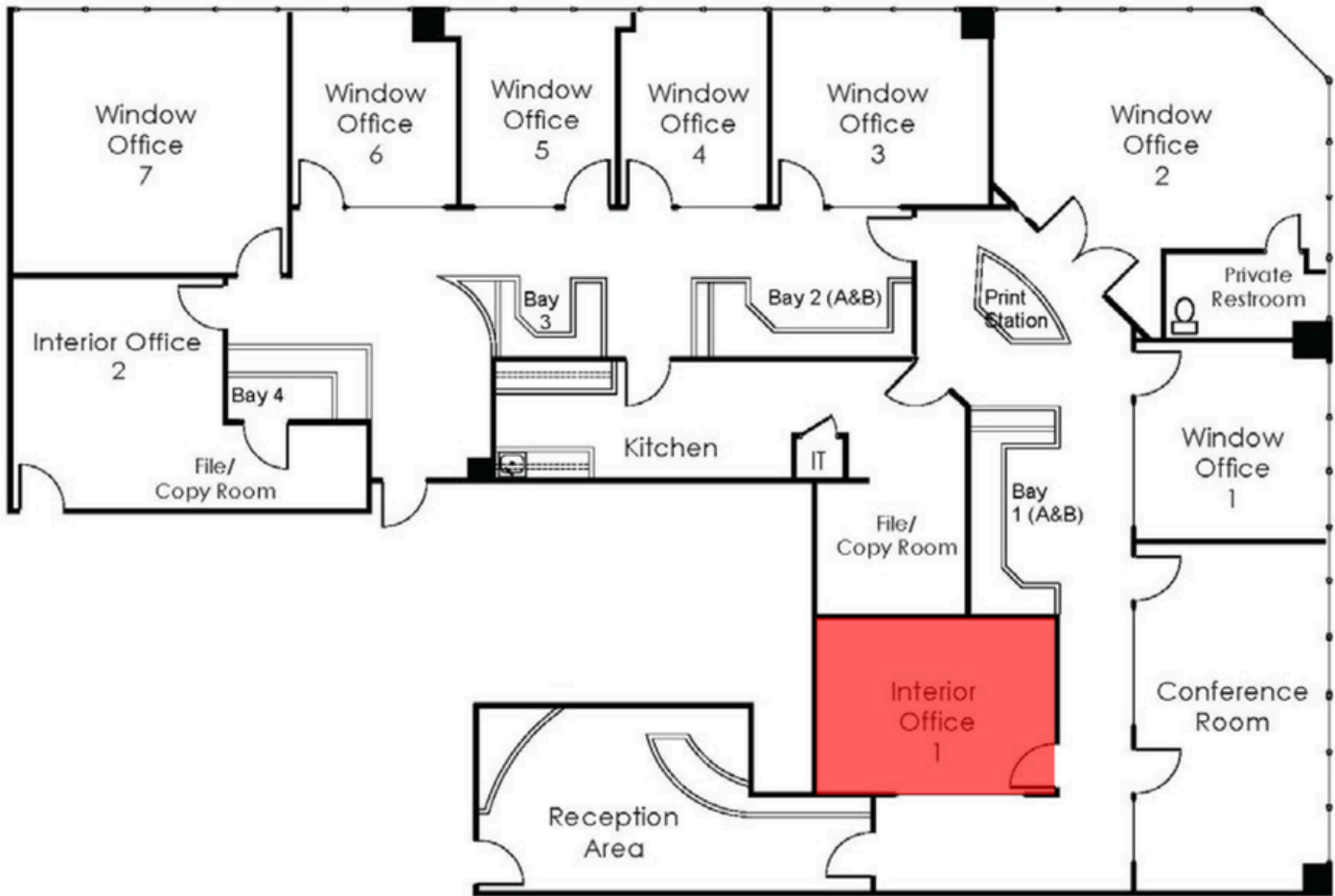
**Jeff Lipson**  
310.202.9008 x 113  
[jlipson@wilshireag.com](mailto:jlipson@wilshireag.com)  
DRE# 01196852



**Kiersten Echon**  
310.202.9008 x 136  
[kiersten@wilshireag.com](mailto:kiersten@wilshireag.com)  
DRE# 02339219

# Individual Office in Century City for Shared Sublease

1801 Century Park East  
Los Angeles, CA 90067  
19<sup>th</sup> Floor



**Jeff Lipson**  
310.202.9008 x 113  
[jlipson@wilshireag.com](mailto:jlipson@wilshireag.com)  
DRE# 01196852



**Kiersten Echon**  
310.202.9008 x 136  
[kiersten@wilshireag.com](mailto:kiersten@wilshireag.com)  
DRE# 02339219