

# Landmark Office Building

205 S. Whiting Street  
Alexandria, VA 22304



## HIGHLIGHTS

- Just off I-395 at the Duke Street Exit close to future location of Inova Alexandria Hospital
- Free surface and garage parking
- All-inclusive pricing
- On-site property management and maintenance
- Snack shop in the lobby as well as several medical offices and retail businesses within the building, such as hair salon, gym and payroll processing

## AVAILABLE SUITES

- |             |          |                |
|-------------|----------|----------------|
| • Suite 401 | 815 SF   | \$2,500/month  |
| • Suite 600 | 4,960 SF | \$15,290/month |
| • Suite 601 | 905 SF   | \$2,790/month  |
| • Suite 602 | 1,330 SF | \$4,100/month  |

## PRICING AND TERMS

- Starting at \$37.00/sf, full service, including daily limited cleaning (price based on limited build out)
- 5 – 10 years



## CONTACT AND FURTHER INFORMATION

**Cecilia Gondor, Managing Member**

L&M Management LLC

101 S. Whiting Street, Suite 113

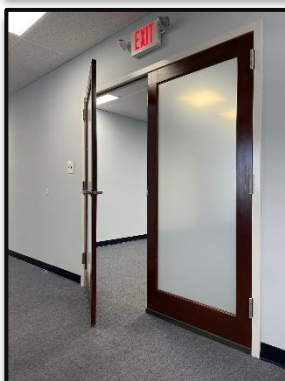
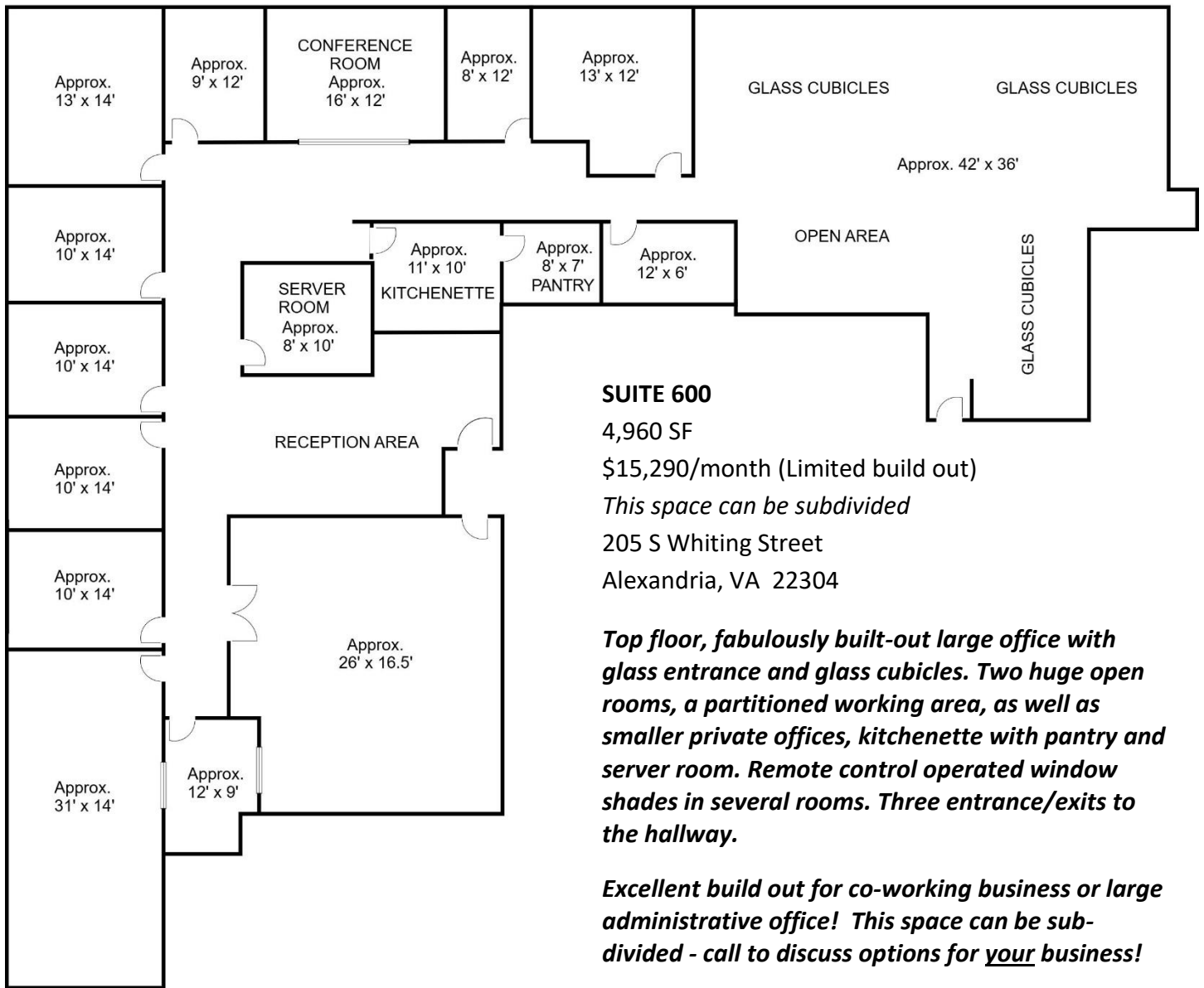
Alexandria, VA 22304

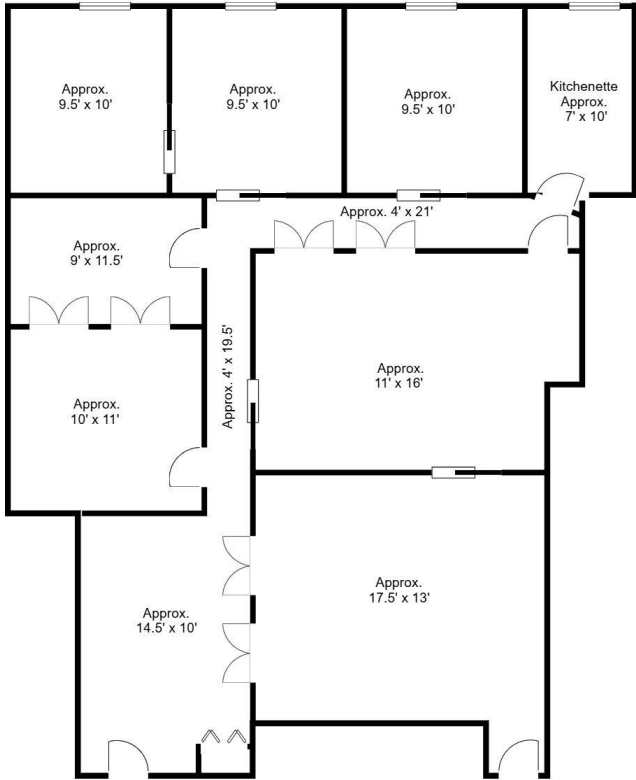
(w) (703) 751-5100

[cgondor@rentatlandmark.com](mailto:cgondor@rentatlandmark.com)

[www.LeaseAtLandmark.com](http://www.LeaseAtLandmark.com)

*Pricing information as of 6/2025 and is subject to change*





LANDMARK OFFICE BUILDING  
Suite 602  
1,330 square feet  
205 S Whiting Street  
Alexandria, VA 22304

rentable square feet include a core factor of 5%

## SUITE 602

1,330 SF

\$4,100/month

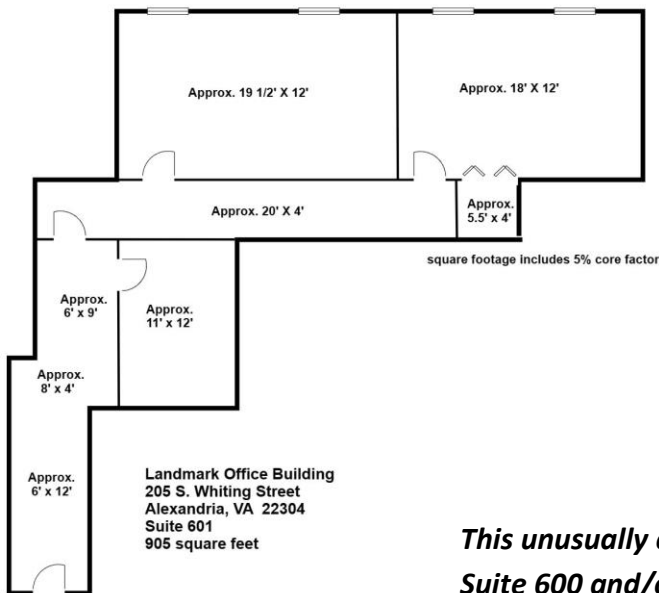
*This space can be combined with Suite 601*

205 S Whiting Street

Alexandria, VA 22304

***This top-floor space is excellent for collaboration! Large meeting rooms are surrounded by smaller offices with wide-opening double wood doors to expand or separate areas. The suite has its own HVAC system with 2 thermostats and a kitchenette. Move in ready!***

***Can be combined with Suite 601 and Suite 600 for up to 7, 185 square feet.***



square footage includes 5% core factor

## SUITE 601

905 SF

\$2,790/month

205 S Whiting Street

Alexandria, VA 22304

***This unusually configured space can be leased alone or combined with Suite 600 and/or Suite 602. It is located on the top floor of the building and has an impressive view.***



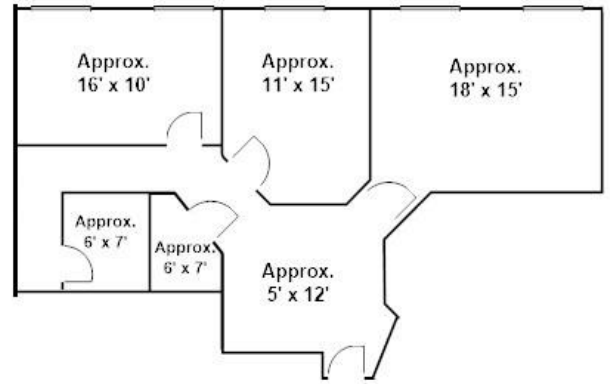
*Pricing information as of 6/2025 and is subject to change*

**SUITE 401**

815 SF

\$2,375/month

*This comfortable suite includes 3 executive offices with windows, a spacious reception area and 2 storage and/or IT rooms.*



**LANDMARK OFFICE BUILDING**  
Suite 401  
815 Square Feet  
205 S. Whiting St.  
Alexandria, VA 22304



*Pricing information as of 6/2025 and is subject to change*

**CONTACT AND FURTHER INFORMATION – (703) 751-5100 -- [www.LeaseAtLandmark.com](http://www.LeaseAtLandmark.com)**