



**5380 Canotek Road
Unit 23, 25
Ottawa ON, K1J 1H7**

**Sublease
Available**

Space Profile

Premises	Unit 23 + 25
Approx. RSF	1,958 RSF
Rental Rate	Please Contact
Additional Rent	\$8.10 (Est. 2024)
Available	Immediate
Term	Until 02/28/2031
Parking	1.70/1,000
Zoning	IL2 H(14)

Map



Features

- Office space with excellent access to Highway 417
- Well-designed layout featuring multiple private offices, meeting rooms, a kitchenette, and a welcoming reception area
- Ample on-site parking for staff and visitors
- Strong electrical capacity to support office operations
- Additional rent includes water, hydro is fixed and depends on the tenant's usage, and gas is paid directly to the utility provider

For More Information

Cresa
1335 Carling Ave
Suite 602
Ottawa, ON K1Z 8N8

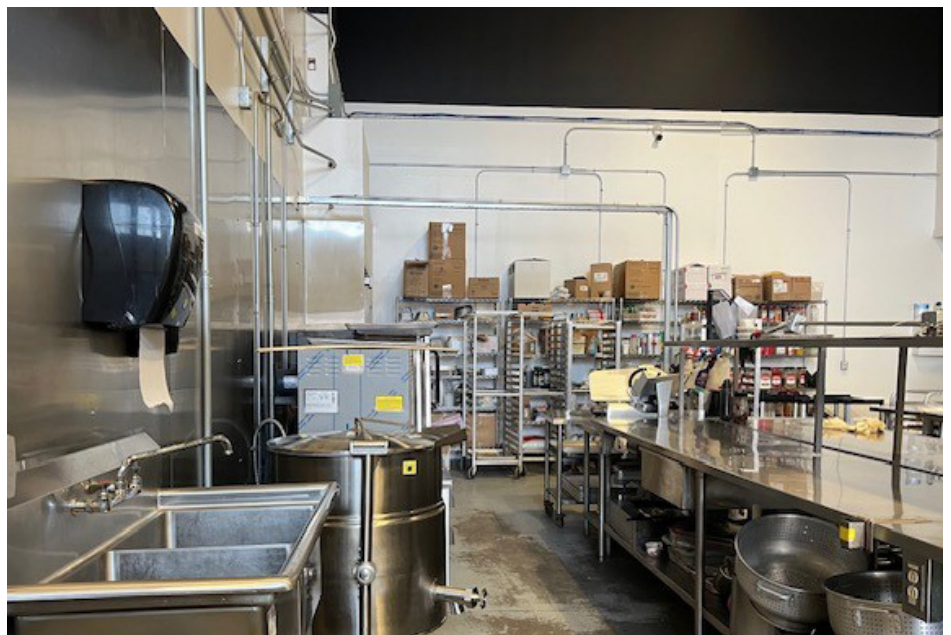
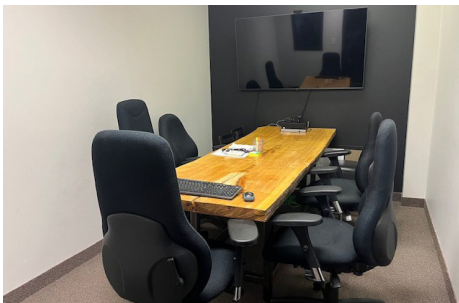
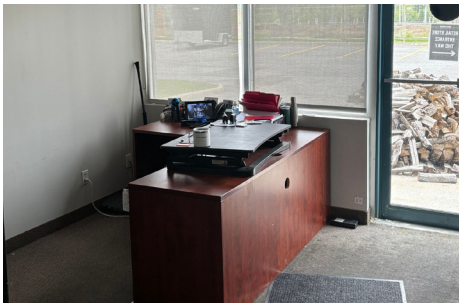


Zach Coakeley
613.797.9224
zcoakeley@cresa.com



5380 Canotek Rd
Ottawa ON
K1J 1H7

Space Photos



For More Information

Zach Coakeley
613.797.9224
zcoakeley@cresa.com

Floor Plan

