

*The Spec Suite*  
**Advantage**

Sixth Floor

600  
*Fifth*



# Sixth Floor

Summer 2026 Delivery

2,500 RSF to 20,000 RSF  
Built-Out and Ready for Occupancy

20,077 RSF

Suite 601  
3,863 RSF

Suite 602  
3,884 RSF

Suite 603  
4,819 RSF

Click On Floor Plan  
To View Each Suite

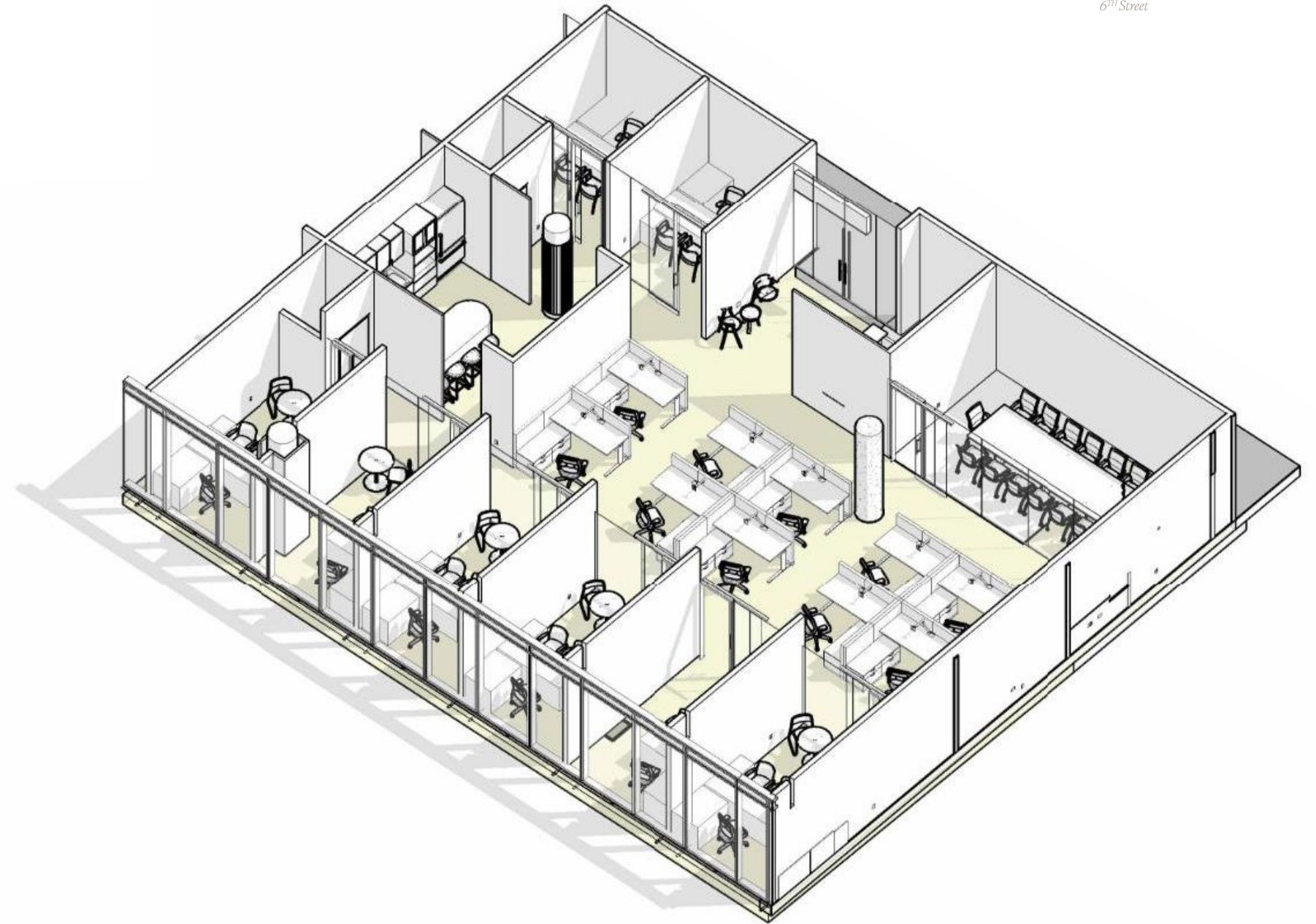


Representative Imagery



Suite 601  
3,863 RSF

- 10 WORKSTATIONS
- 8 OFFICES (6 WINDOWED)
- 1 CONFERENCE

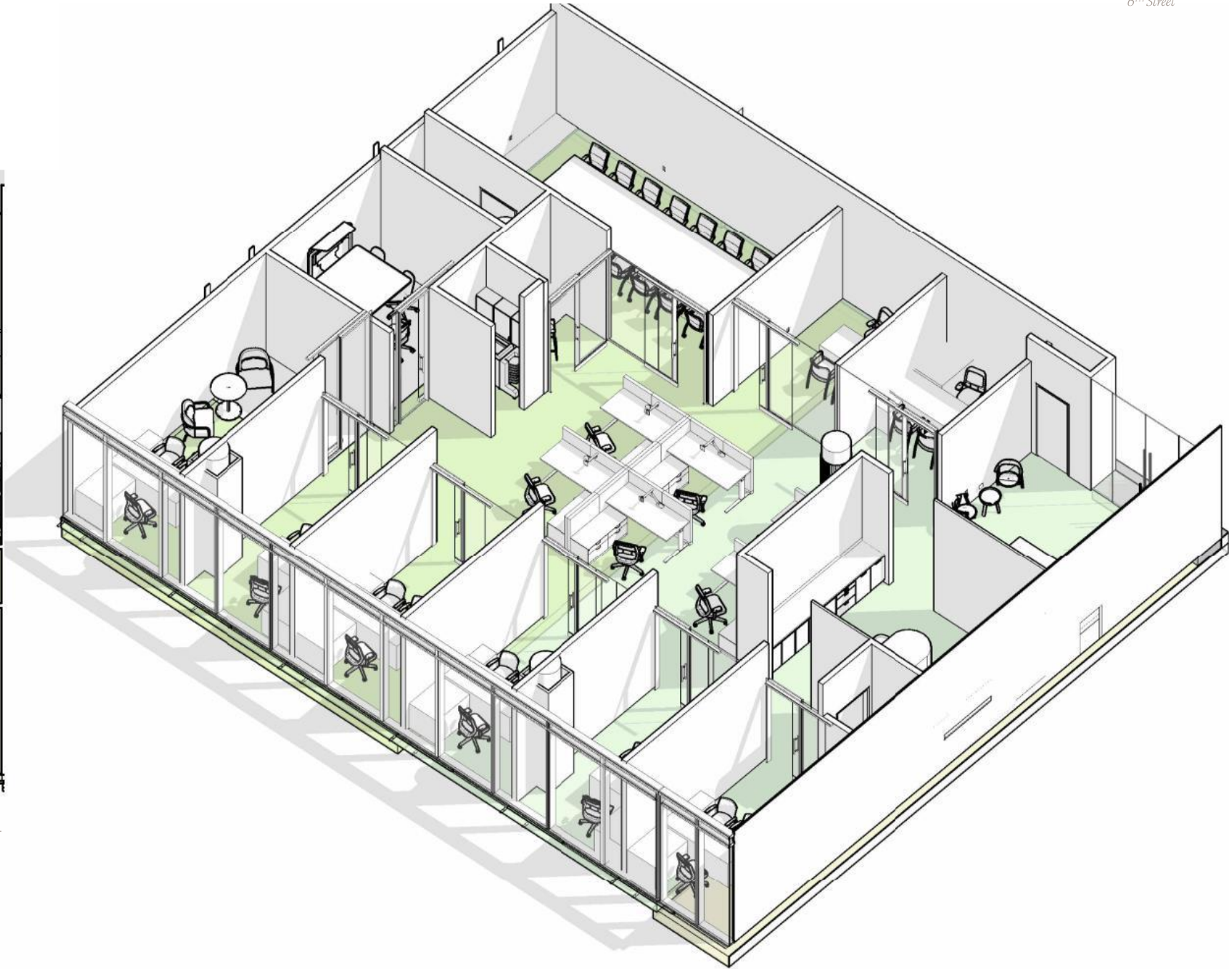


Suite 602  
3,884 RSF

- 6 WORKSTATIONS
- 8 OFFICES (6 WINDOWED)
- 1 HUDDLE ROOM
- 1 CONFERENCE



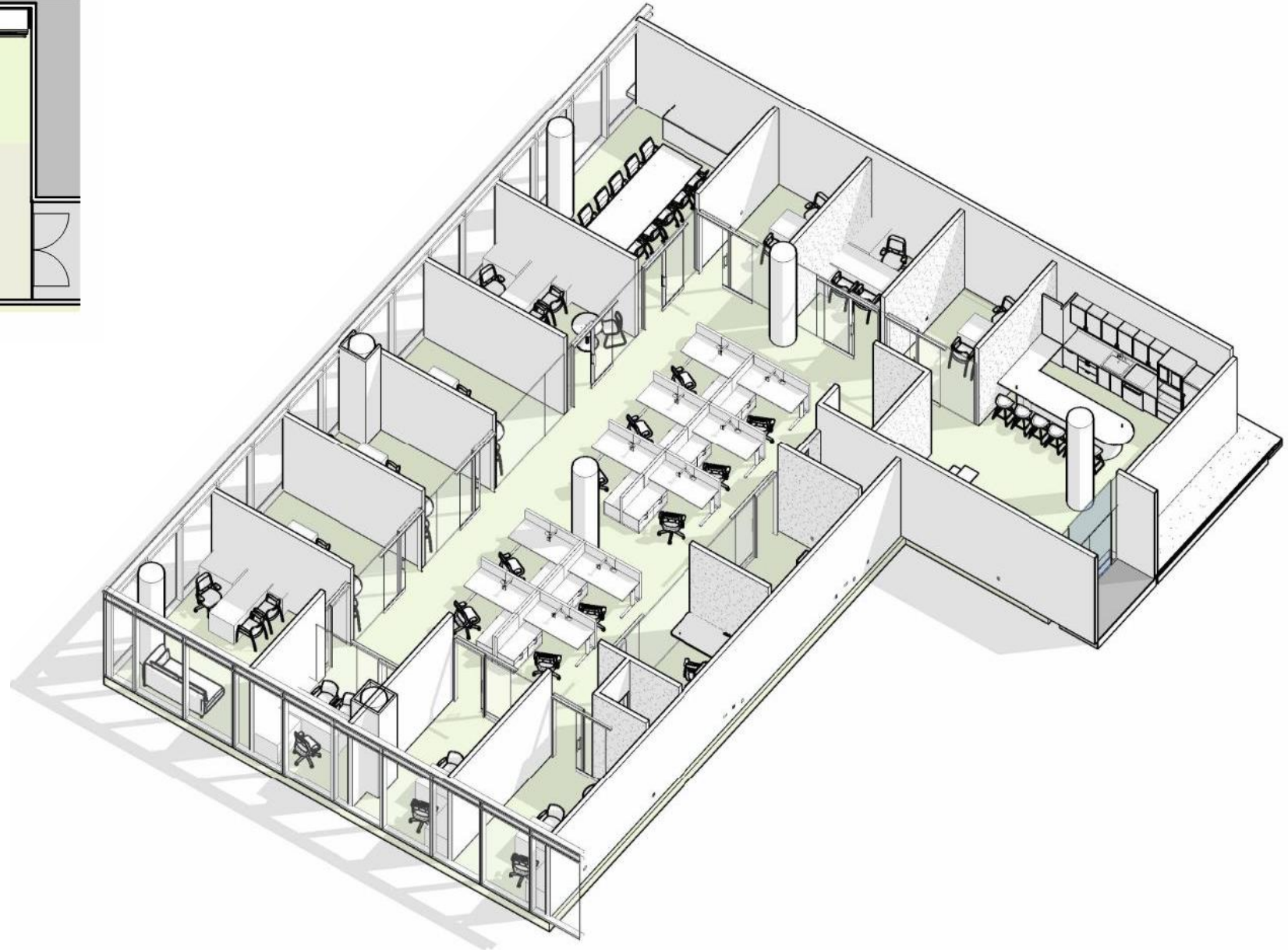
WINDOWLINE  
6<sup>TH</sup> Street



# Suite 603

4,819 RSF

- 10 WORKSTATIONS
- 13 OFFICES (8 WINDOWED)
- 1 CONFERENCE



*Shared*  
Amenities

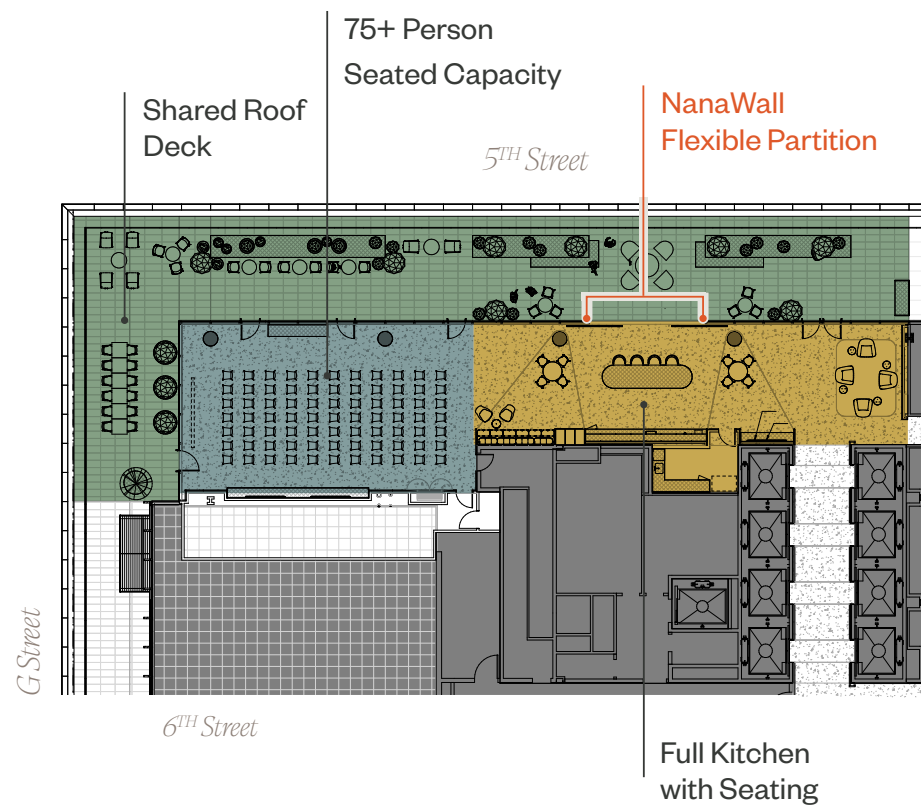
# Flexibility Mastered

## Penthouse Features

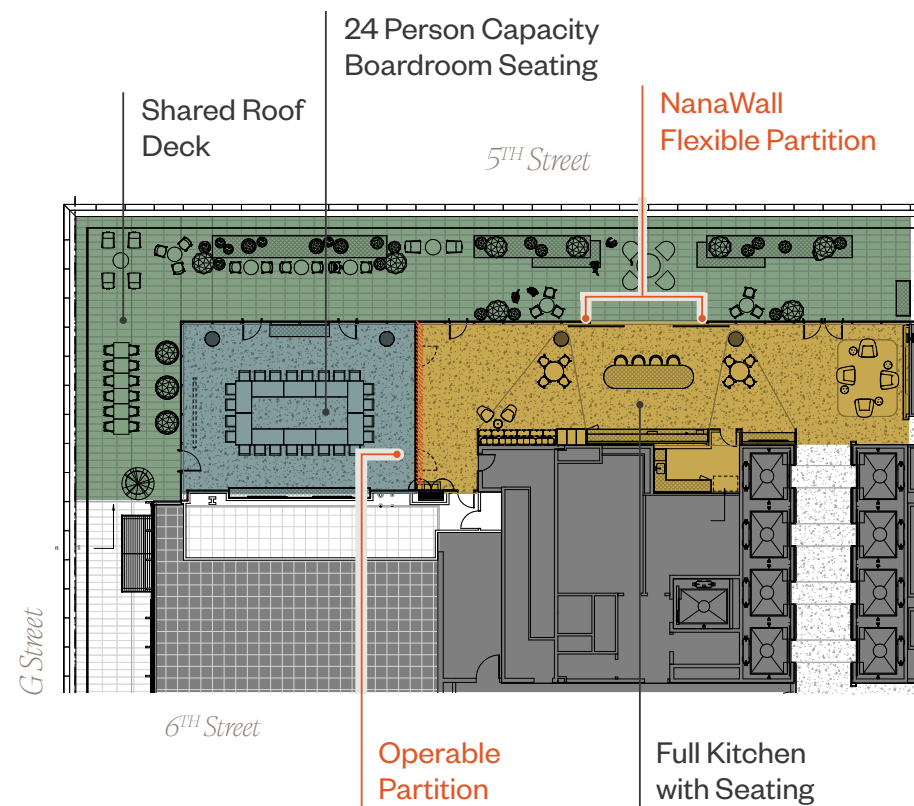
### Hypothetical Layout

High-Ceiling 75+ Person Seated Capacity Conference Facility • Full Height Glass • Best-in-Class Tenant Lounge  
D.C.'s Best Multi-Purpose Space • Sliding Glass NanaWall with Views of Prime Pennsylvania Avenue location

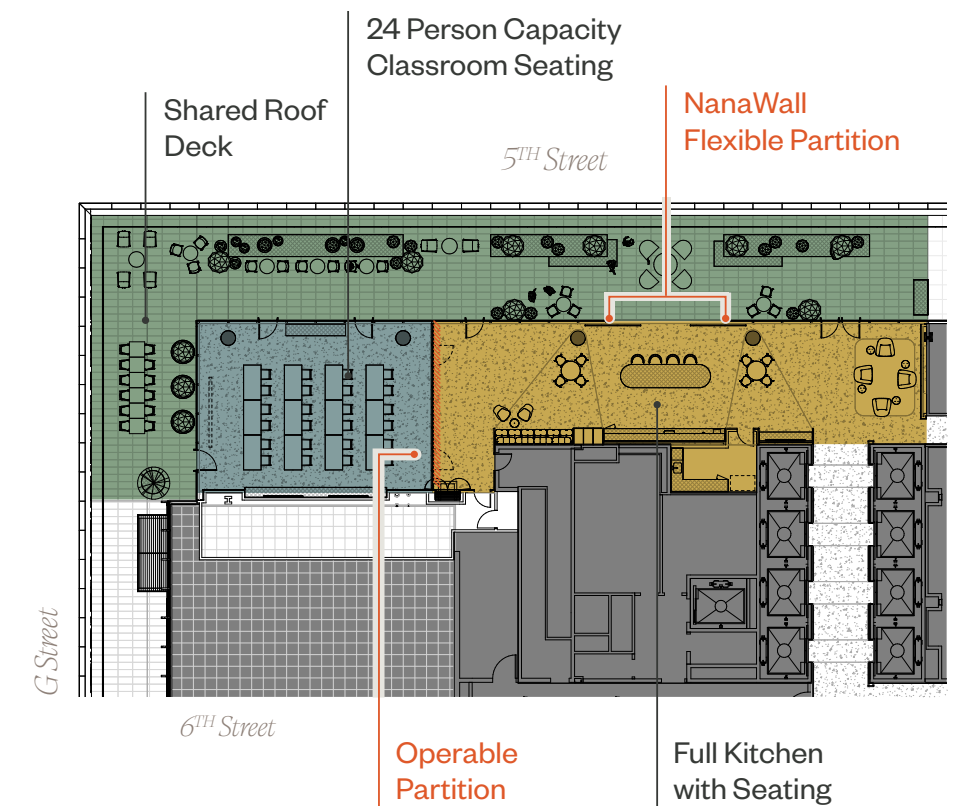
### The Big Crowd



### The Board Meeting



### The Focused Classroom





The top spot  
*for all occasions*



# *Room to ride*

Our spacious and secure bike room provides plenty of space for bikers and direct access to 6th Street.



# *State-of-the-art* motivation

Our ground floor, lobby-level fitness center looks out to The National Building Museum for a workout with a view.



# 600 *Fifth*

ROCKEFELLER  
GROUP

STONEBRIDGE

Owned, Developed and Managed by  
Rockefeller Group and Stonebridge.

*Scott Frankel*

202.585.5652

scott.frankel@cbre.com

*Carroll Cavanagh*

202.585.5586

carroll.cavanagh@cbre.com

*DJ Callahan*

202.585.5723

daniel.callahan@cbre.com

*Emily Eppolito*

202.585.5695

emily.eppolito@cbre.com

*Dimitri Hajimihalis*

202.585.5611

dimitri.hajimihalis@cbre.com

Leasing by

**CBRE**