

Office Suites Available



The Plaza Shopping Center
16761-16789 Bernardo Center Drive
Rancho Bernardo, CA 92128

This information is compiled from data which we believe to be correct but no liability is assumed by this company as to accuracy of such data. V4

For more information, please contact:

Peter Orth
619-318-7767
peter.orth@cdccommercial.com
DRE Lic. #00448913

Matt Orth
858-736-1337
morth@cdccommercial.com
DRE Lic. #01884500

11440 W. Bernardo Ct., #300
San Diego, CA 92127
T: 760-743-8500
www.cdccommercial.com

Property Information

Available Office Space

16787 Bernardo Center Dr.

- ▲ **Suite A-9 - ~1,400 SF**
- ▲ **Suite A-11 - ~1,000 SF**
Suite includes small kitchen/break room
- ▲ **Suite A15 - ~996 SF**

▲ Great Demographics, high income levels and a strong workforce presence in the area

▲ Adjacent to the 125,000 square foot Vons-anchored Rancho Bernardo Town Center Shopping Center

▲ The Plaza is an active shopping center with a strong social gathering draw

Contact Broker for additional information.

This information is compiled from data which we believe to be correct but no liability is assumed by this company as to accuracy of such data. V4

For more information, please contact:



Peter Orth
619-318-7767
peter.orth@cdccommercial.com
DRE Lic. #00448913

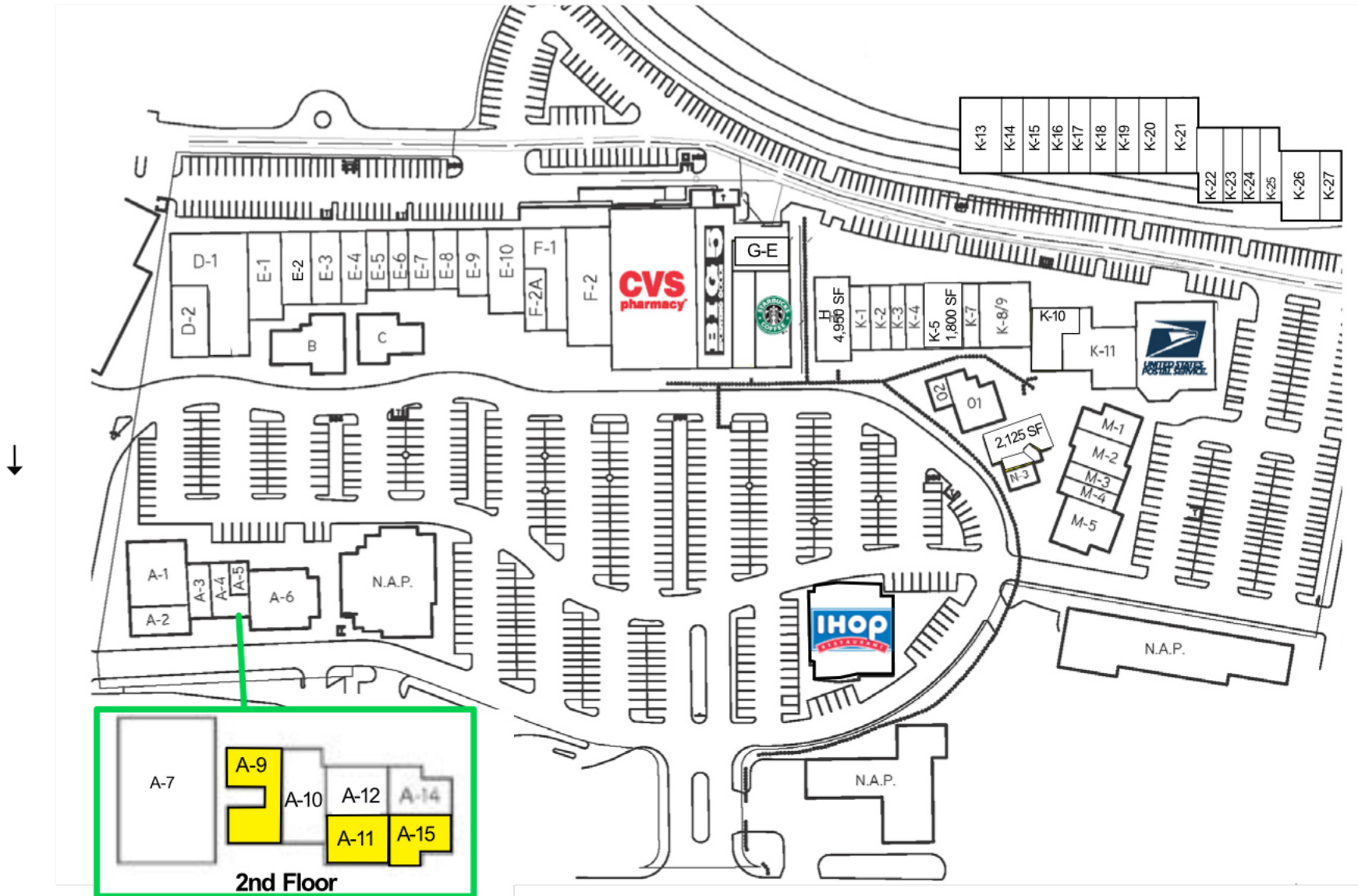
Matt Orth
858-736-1337
morth@cdccommercial.com
DRE Lic. #01884500

11440 W. Bernardo Ct., #300
San Diego, CA 92127
T: 760-743-8500
www.cdccommercial.com

Join:



Site Plan



This information is compiled from data which we believe to be correct but no liability is assumed by this company as to accuracy of such data. V4

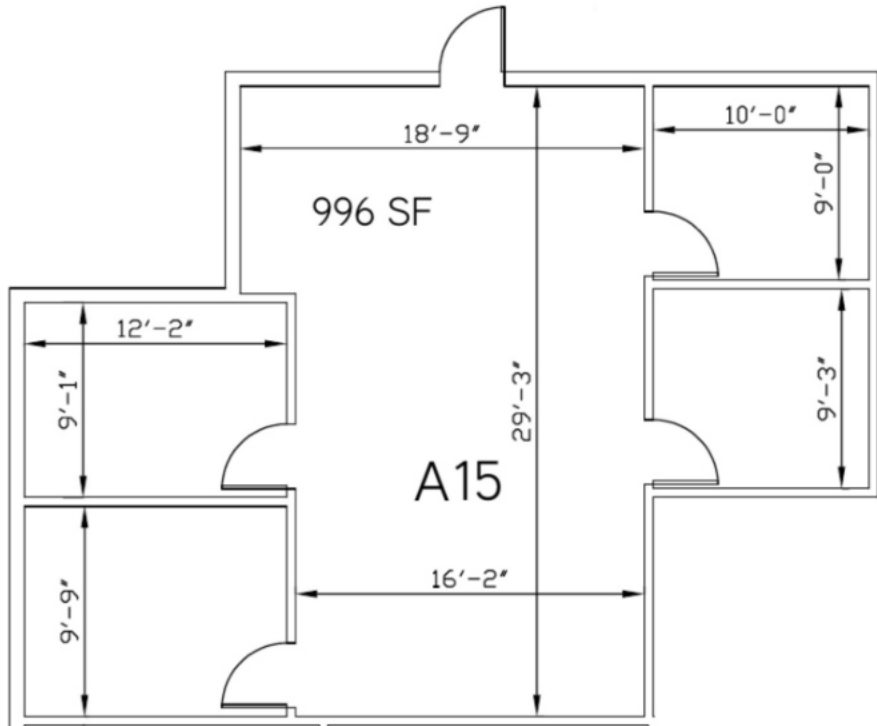
For more information, please contact:

Peter Orth
 619-318-7767
peter.orth@cdccommercial.com
 DRE Lic. #00448913

Matt Orth
 858-736-1337
morth@cdccommercial.com
 DRE Lic. #01884500

11440 W. Bernardo Ct., #300
 San Diego, CA 92127
 T: 760-743-8500
www.cdccommercial.com

Floor Plan



Suite A15 - ~996 SF

This information is compiled from data which we believe to be correct but no liability is assumed by this company as to accuracy of such data. V4



Demographics

Population	2 Mile	5 Mile	10 Mile
2024 Total Population:	46,310	166,497	569,471
2029 Population Projection:	46,002	164,965	562,956
Median Age:	46.2	42.7	39.5
Households			
2024 Total Households:	18,258	59,403	188,769
HH Growth 2020-2024:	0.7%	0.4%	0.2%
Average Household Inc:	\$144,687	\$157,497	\$146,347
Avg Household Size:	2.5	2.7	2.9
Avg HH Vehicles:	2.00	2.00	2.00
Housing			
Median Home Value:	\$794,057	\$866,263	\$851,147
Median Year Built:	1980	1985	1985

This information is compiled from data which we believe to be correct but no liability is assumed by this company as to accuracy of such data. V4

