

## INDUSTRIAL SPACE FOR LEASE

5510 Ambler Dr  
#4, Mississauga



## COMMENTS

Industrial unit with a truck level door. Well Maintained Building With One Minute Access To Hwy 401. Excellent Shipping Area Suitable For 53 Foot Trailers. Woodworking, Logistics, Stone Cutting And Welding Uses Are Not Allowed.

## DETAILS:

**Total Size:** 4,133 Sq. Ft.

**Office Area:** 413 Sq. Ft.

**Zoning:** E-2

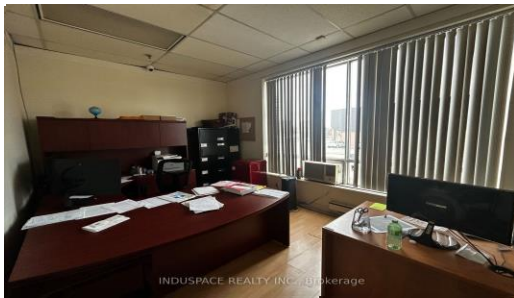
**List Rate:** \$16.95 Sq. Ft. Net

**TMI:** \$4.90 (2025)

**A/C:** Part

**Sprinklers:** Y

**Heat:** Gas Forced Air Open



**Jason Gilbert**

Broker

Cell: (416) 419-2115

jasongilbert@induspacerealty.com

[www.induspacerealty.com](http://www.induspacerealty.com)



**John S. Gilbert**

Broker of Record/Owner

Cell: (416) 828-5547

jgilbert@induspacerealty.com

5800 Ambler Drive, Suite 210, Mississauga, Ontario L4W 4J4 | T:(905) 277 4747