

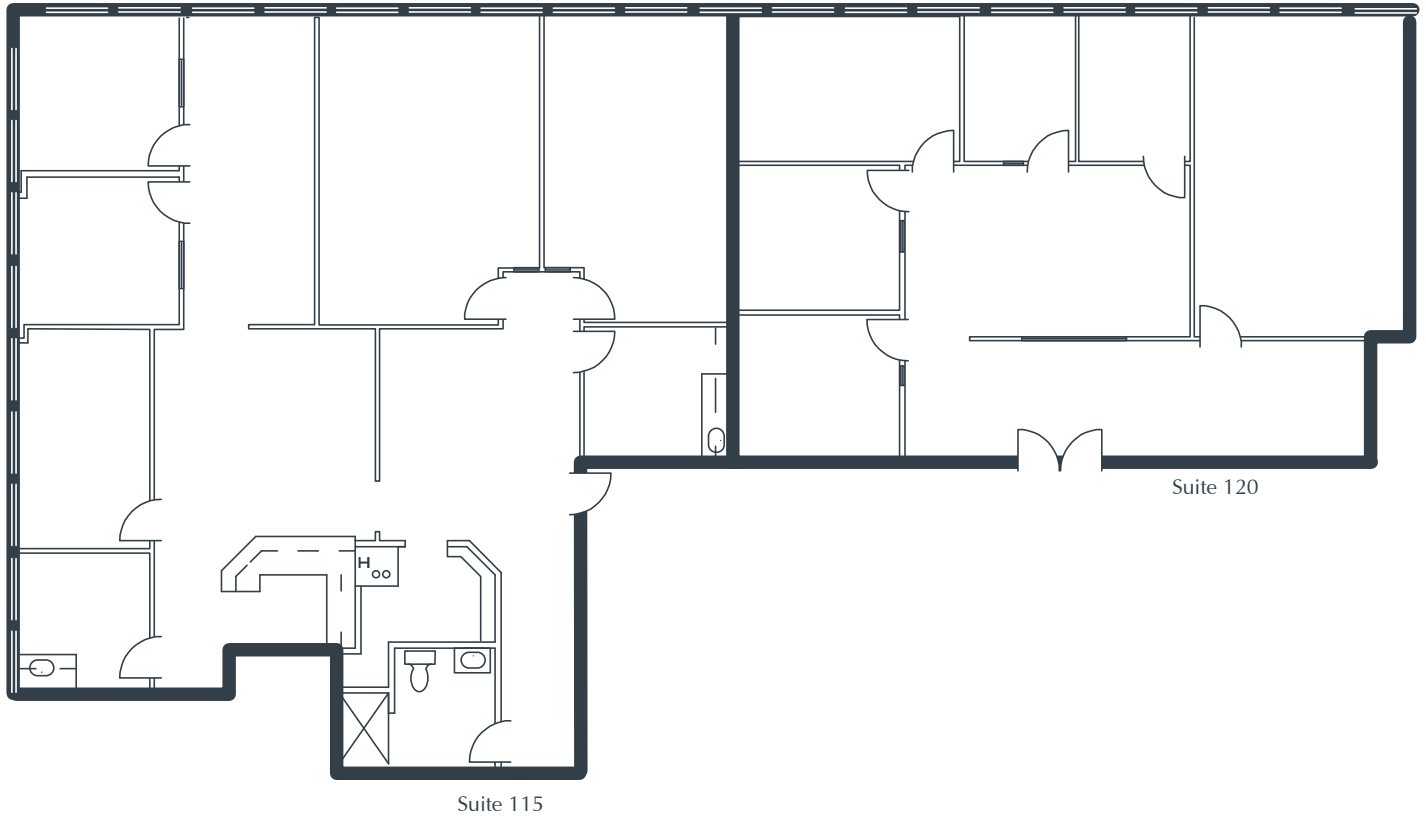
PACIFIC POINTE CORPORATE CENTRE

901 Calle Amanecer, Suites 115 & 120
San Clemente, CA

4,448 Square Feet

Call for Pricing

Full Service Gross



NOTES

- Reception
- 8 Window Offices
- 2 Interior Offices
- Conference Room
- Restroom
- 2 Kitchens
- Open Work Areas
- Part of a Professionally Managed Business Park

Created by Olen Commercial Realty Corp., 2022.
Information is not to be published or copied without
written approval. Square footage and floor plans are
estimates and should be separately verified. All rates,
terms, floor plans, and building facts are subject to
change without notice.

ea 05.28.2025

LAURA PRESTON-FAYERMAN

Senior Leasing Director

949.719.7205

lfayerman@olen.com



Seven Corporate Plaza

Newport Beach, CA

949.644.6536

www.olen.com