

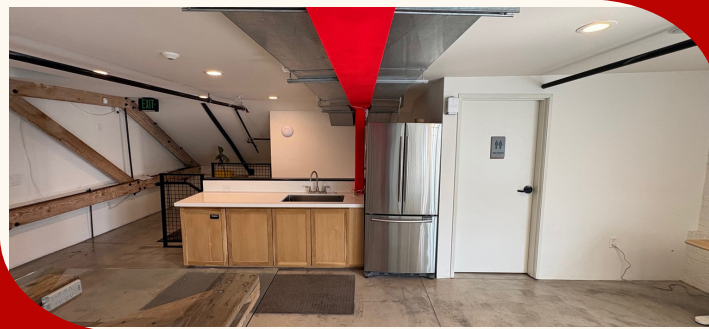
# 240

## W. CHAPMAN AVE.

Orange, CA

### BUILDING NOTES:

- Located in the heart of Old Towne Orange
- Surrounded by numerous retail amenities
- High-visibility corner location



### EMILIO ROSAS

Associate

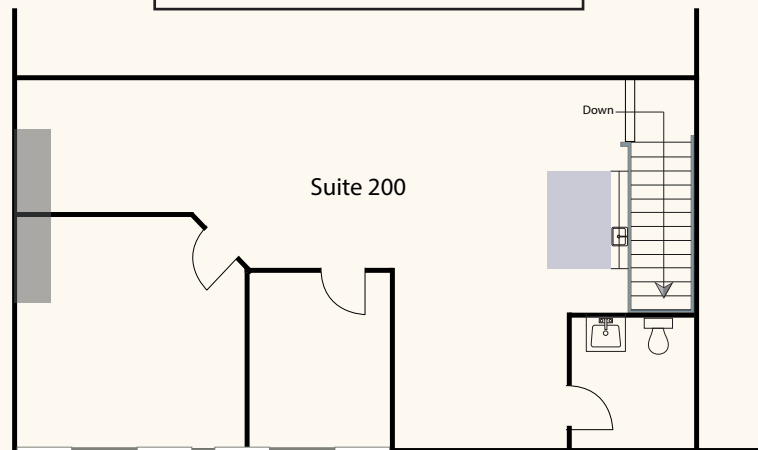
t 949-608-2077

m 714-745-1743

CA RE Lic. #02225494

[emilio.rosas@nrmk.com](mailto:emilio.rosas@nrmk.com)

### HIGHLIGHTS:



Creative Office Space



Suite 200: 1,336 SF



Available 6/1/2026



1 private office, 1 conference room, kitchenette, and a private restroom



Reserved parking available. Additional parking located within 175 yards - public parking structure.

CORPORATE LICENSE #01355491

18401 Von Karman Ave., Suite 150, Irvine, CA 92612

[nrmk.com](http://nrmk.com)

# NEWMARK

The information contained herein has been obtained from sources deemed reliable but has not been verified and no guarantee, warranty or representation, either express or implied, is made with respect to such information. Terms of sale or lease and availability are subject to change or withdrawal without notice.