

# LEASING OPPORTUNITY





# THE COMMONS

Mashpee Commons offers a unique, walkable retail environment, located within a mixed-use neighborhood on Cape Cod. The Commons is home to over 100 shops and restaurants, as well as 77 apartments. In addition to commercial and residential space, Mashpee Commons is a year-round destination for events and activities including parades, block parties, and festivals. The Commons is conveniently located at the intersection of route 151 and route 28 in Mashpee, Massachusetts, 11 miles from the Bourne and Sagamore bridges.



# OPPORTUNITY

## LOCATION DETAILS

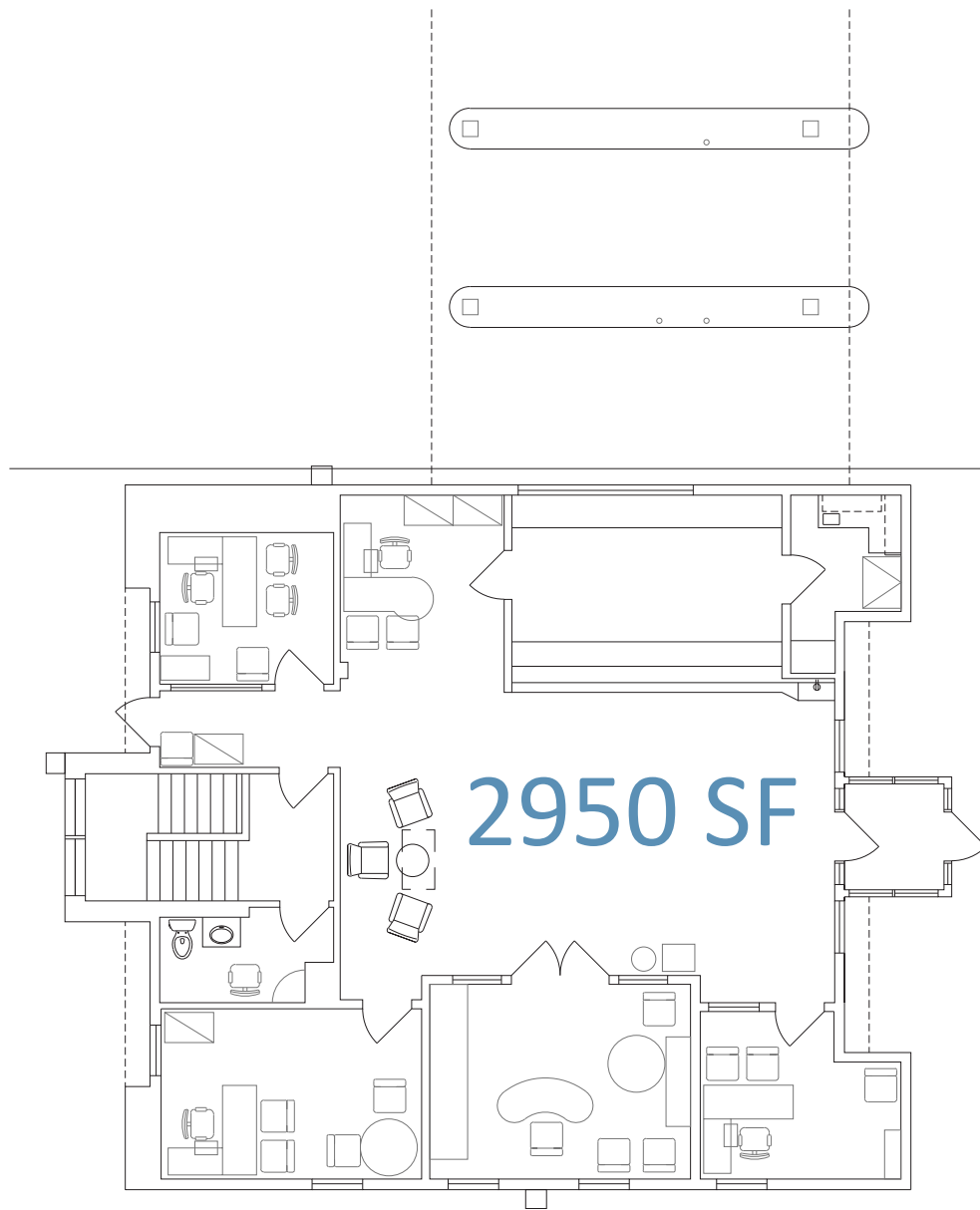
- Free standing building
- 2950 sf - 1st floor
- Finished basement
- Three lane drive-through (can be enclosed)



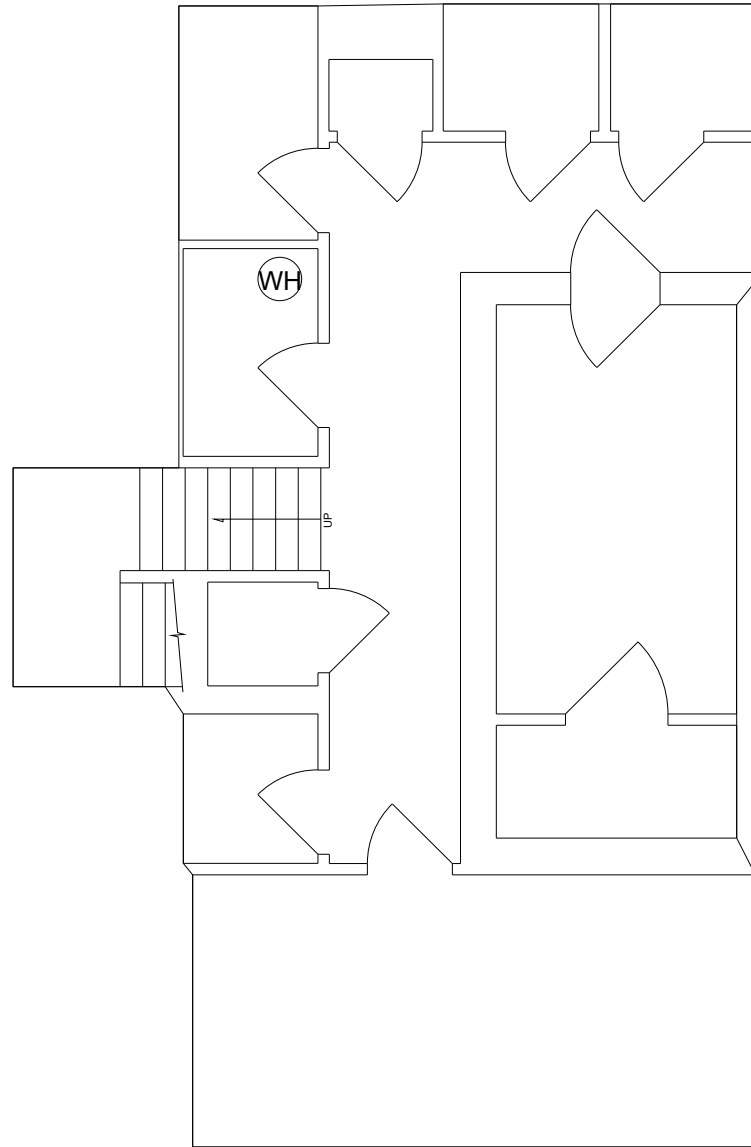
# ADDITIONAL IMAGES



# GROUND FLOOR



# BASEMENT





# KEY RETAILERS

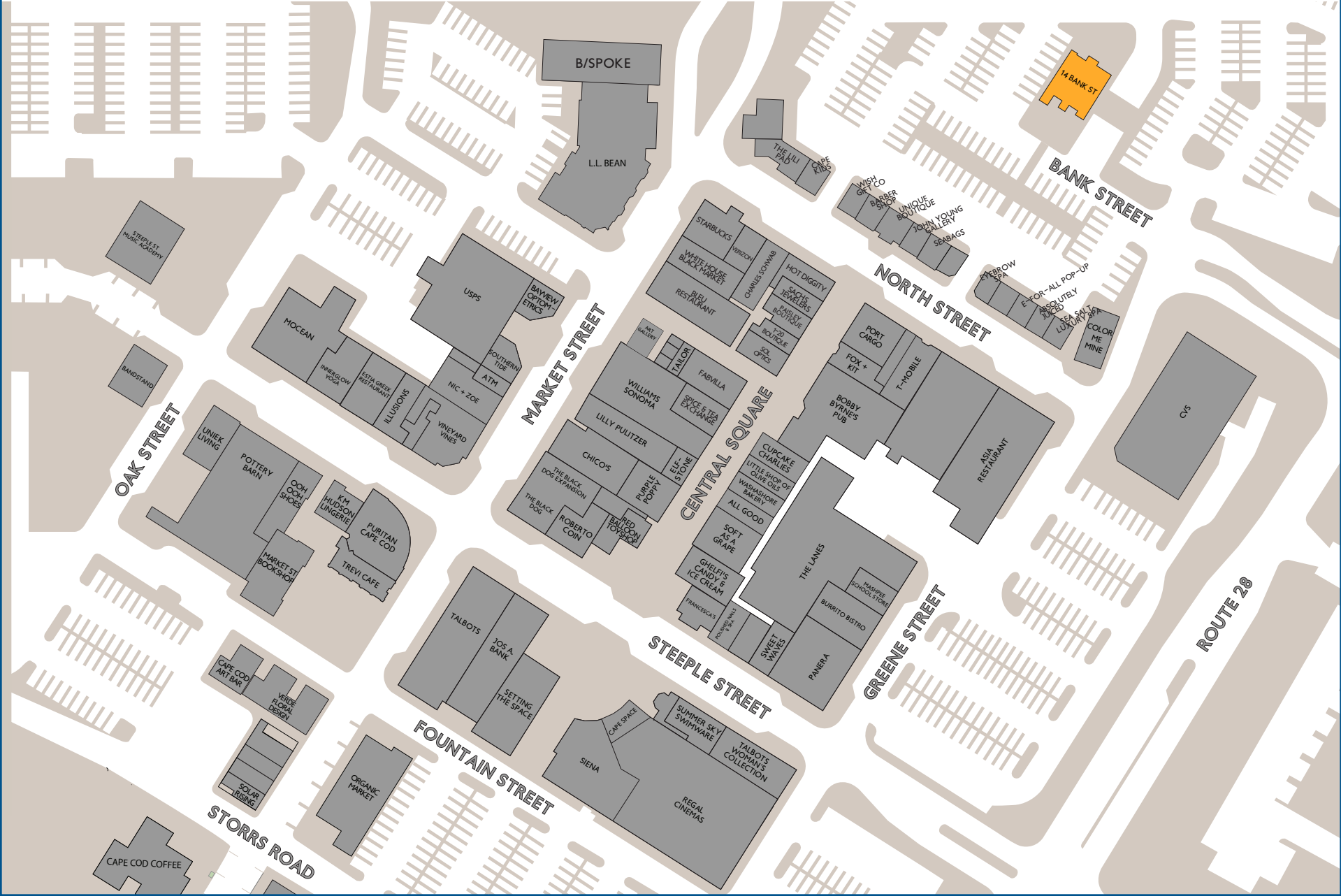
## DINING & ENTERTAINMENT



## FASHION & LIFESTYLE



# LEASE PLAN

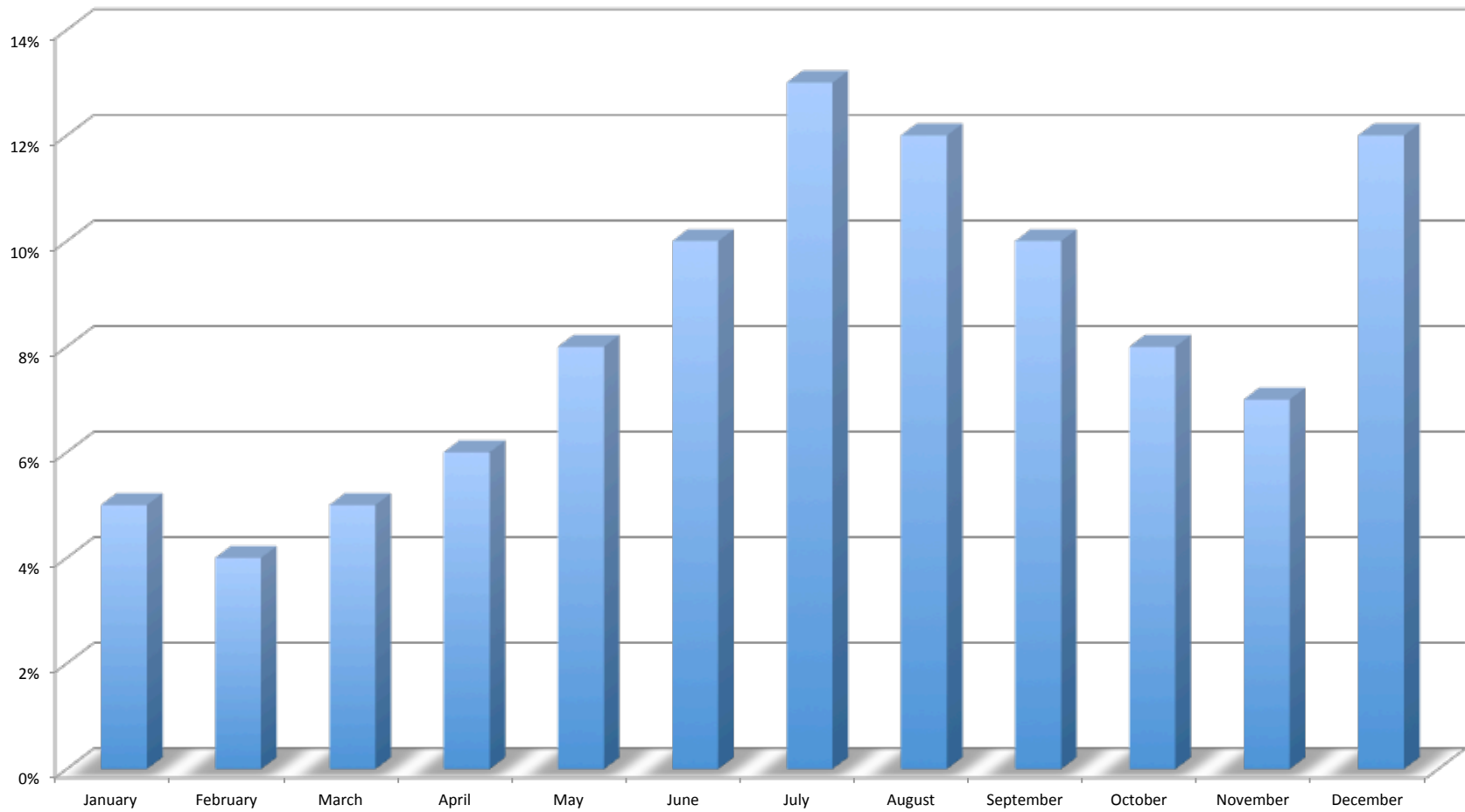


# PRIME LOCATION



# SEASONALITY CHART

GROSS SALES BY MONTH



# CONVENIENTLY LOCATED



- Mashpee Commons is conveniently located on Cape Cod at the intersection of route 151 and route 28 in Mashpee, MA
- 1h 23m drive from Boston
- 1h 12m drive from Providence





JOHN RENZ, VICE PRESIDENT, LEASING  
508.477.5400 | JRENZ@MASHPEECOMMONS.COM

**MASHPEECOMMONS.COM**

