

The background features a dark grey grid with diagonal lines. Overlaid on this are several orange geometric shapes: a large circle on the right, a smaller circle inside it, and a complex polygonal shape on the left. The background is also filled with a pattern of small white dots in some areas.

70 WELLINGTON ST  
GLASGOW G2 6UA



Following an extensive refurbishment, with environmental credentials at its heart, 70 Wellington Street has arrived. The building's carbon reduction concept, 70 Sourced, is the key driver in delivering sustainable, modern workspace and welfare amenity to attract today's discerning office occupier.

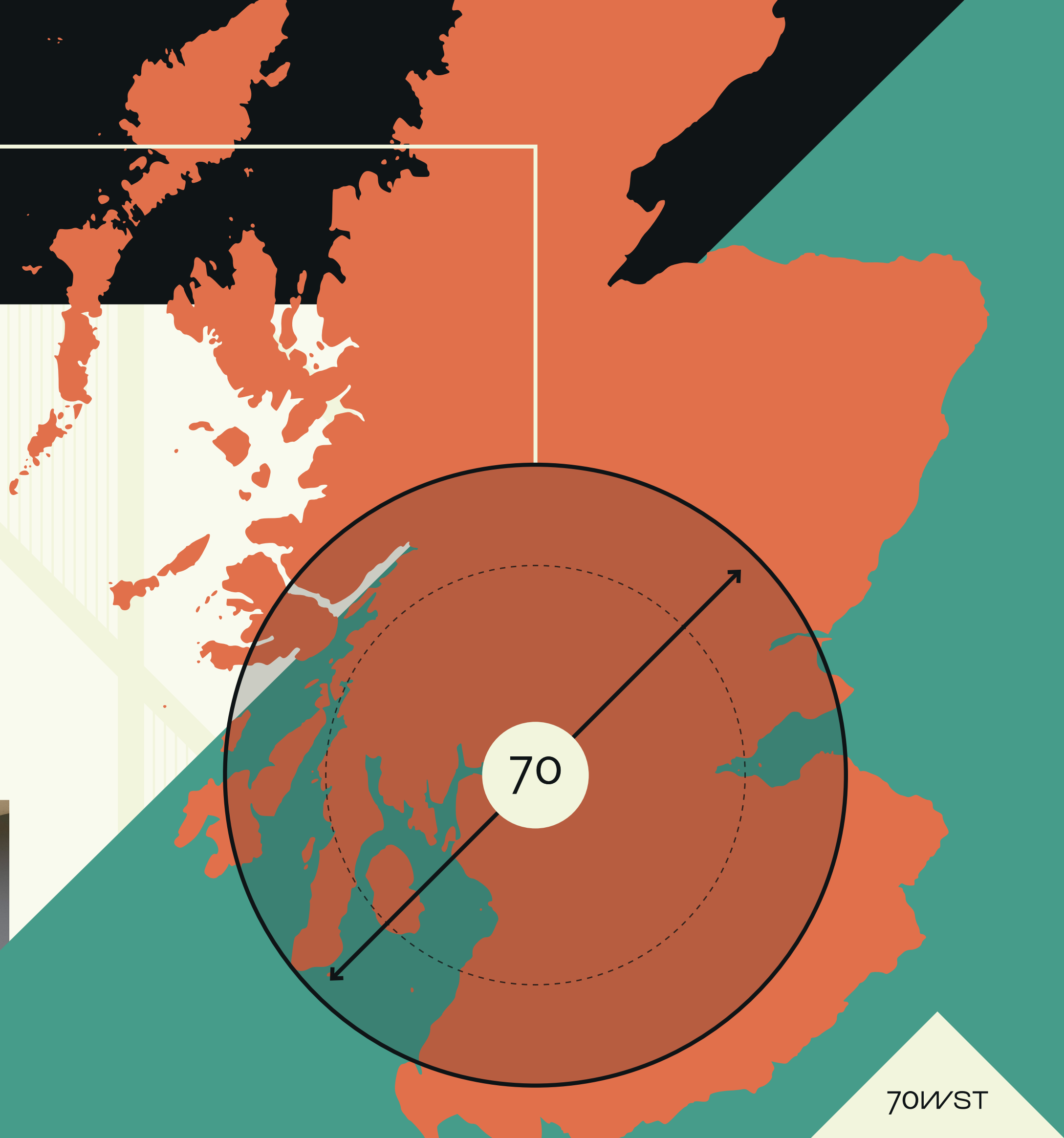
First impressions are everything! We have completely transformed the arrival experience with our newly designed managed foyer, featuring recycled black paneling coupled with a new angular 'Mirri' reception desk, feature lighting, projector art, digital directory board and of course our much loved angel, 'risen' from the original building on the site.

# 70 Sourced

**70 Sourced signifies the 70 mile radius from the building, which has driven our product and supplier selection, wherever possible.**

Materials have been repurposed to ensure minimal waste and sourced from local businesses. Furniture has been reupholstered with new designs using Bute Fabrics and existing floor tiles retained alongside the exposed brick slips. Cable trays from previous fit outs have been re-used and painted to form part of the new reception design and colour palette.

For more information please view our 70 Sourced PDF via the link below:

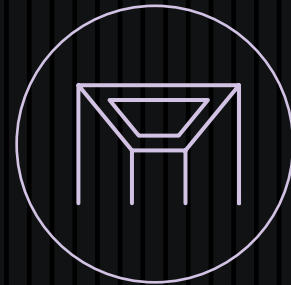




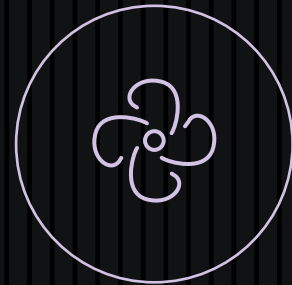
New LED lighting



New double glazed openable windows



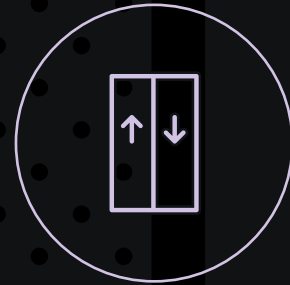
Exposed feature ceilings



Air Conditioning



Newly refurbished double height reception foyer



2 x 10 person passenger lifts



Accessible bathroom and shower

# BUILDING SPECIFICATION



# WELFARE FACILITY



8 brand new high quality shower cubicles



New drying room facilities



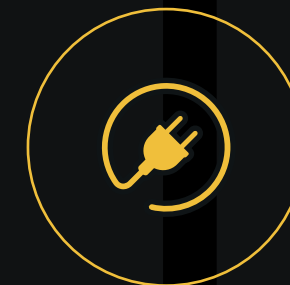
New cycle storage for 32 bikes



New lobby with vanity units, hair dryers and hair straighteners



New cycle washing and maintenance station



New EV chargers for 8 vehicles



34 brand new lockers



70WST

# GRAND

# WorkStation

Say goodbye to mundane office settings and hello to a dynamic workspace. The ground floor at 70 Wellington Street delivers a range of fully fitted suites which benefit from access to our stylish collaboration and breakout space – the source of creativity.

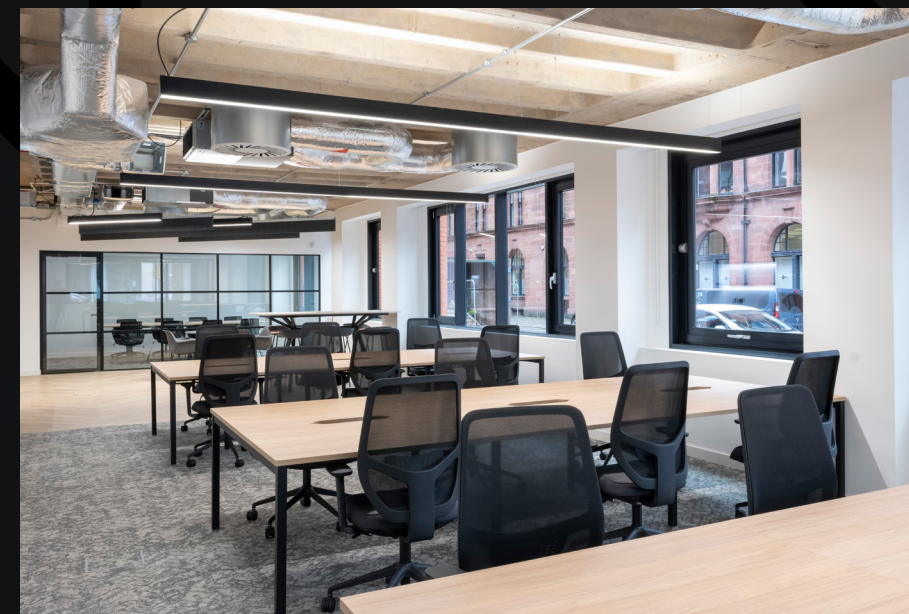
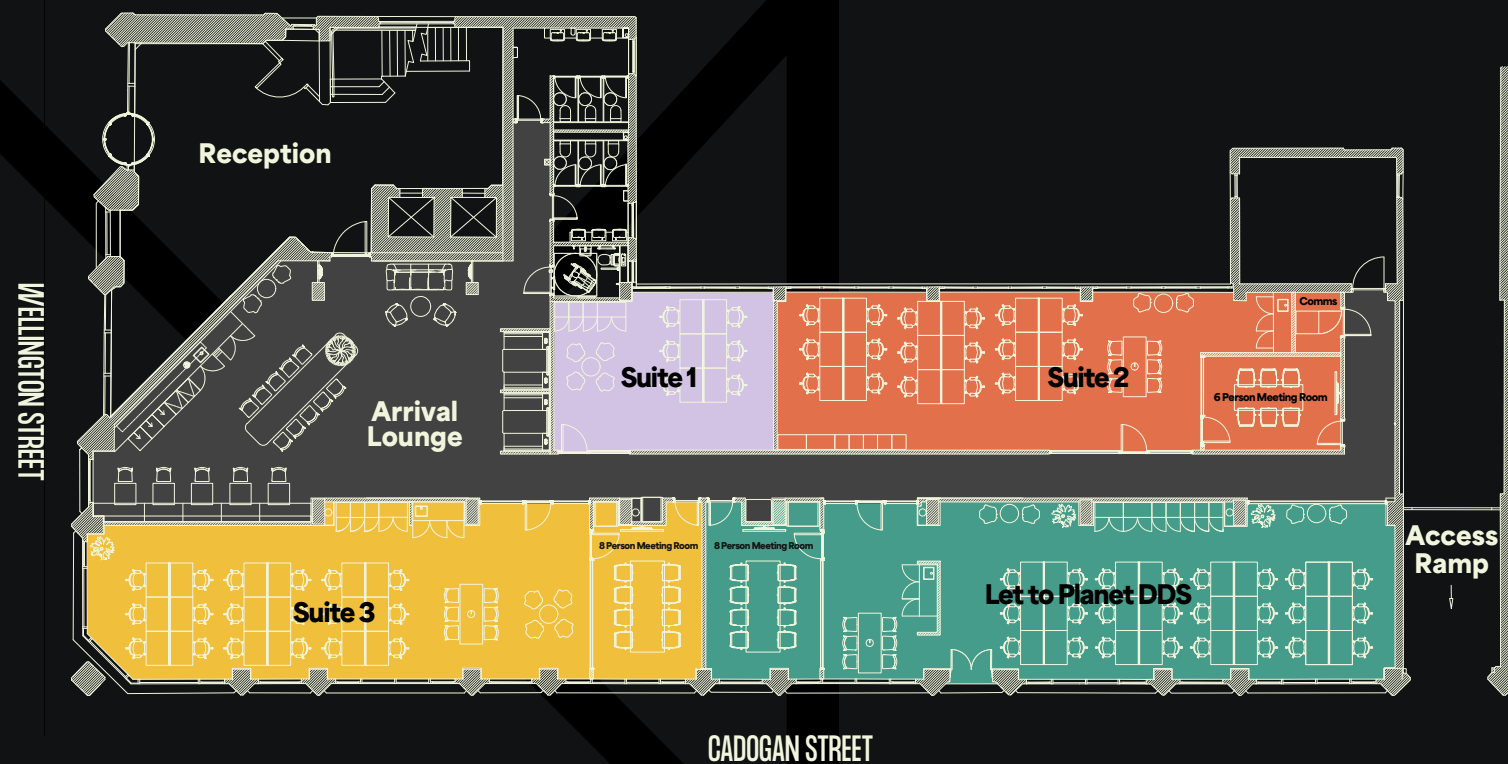


## Specification

The suites will be provided to the following specification:

- Fashionable, fully-fitted suites with stylish furniture
- Communal arrival lounge and WC's
- Dedicated tea points
- Dedicated meeting rooms (in larger suites)
- LED lighting
- Exposed VRF air conditioning
- Exposed ribbed concrete slab
- Fully fitted communal bar style kitchen with agile workstations

## Floor Plan



Suite	NIA	No. of Workstations	Size of Meeting Room
Suite 1	470 sq ft	06	-
Suite 2	1,143 sq ft	18	6 Person
Suite 3	1,273 sq ft	18	8 Person
Suite 4	Let to Planet DDS		

## LEASE

The suites are available on new, flexible, FRI lease terms. All-inclusive packages available, further details can be provided upon request.

## EPC

A copy of the EPC is available upon request.

## LEGAL COSTS

Each party to be responsible for their own legal costs incurred in any transaction. Draft license available upon request.

## RATING

For business rating information please visit the Scottish Assessors Association website: [www.saa.gov.uk](http://www.saa.gov.uk)

70WST

# 1S T

# The 1st Floor

Full floor available for a single occupier or can be subdivided to create suites to suit occupier requirements.

First Floor	2,500 - 7,160 sq ft
-------------	---------------------

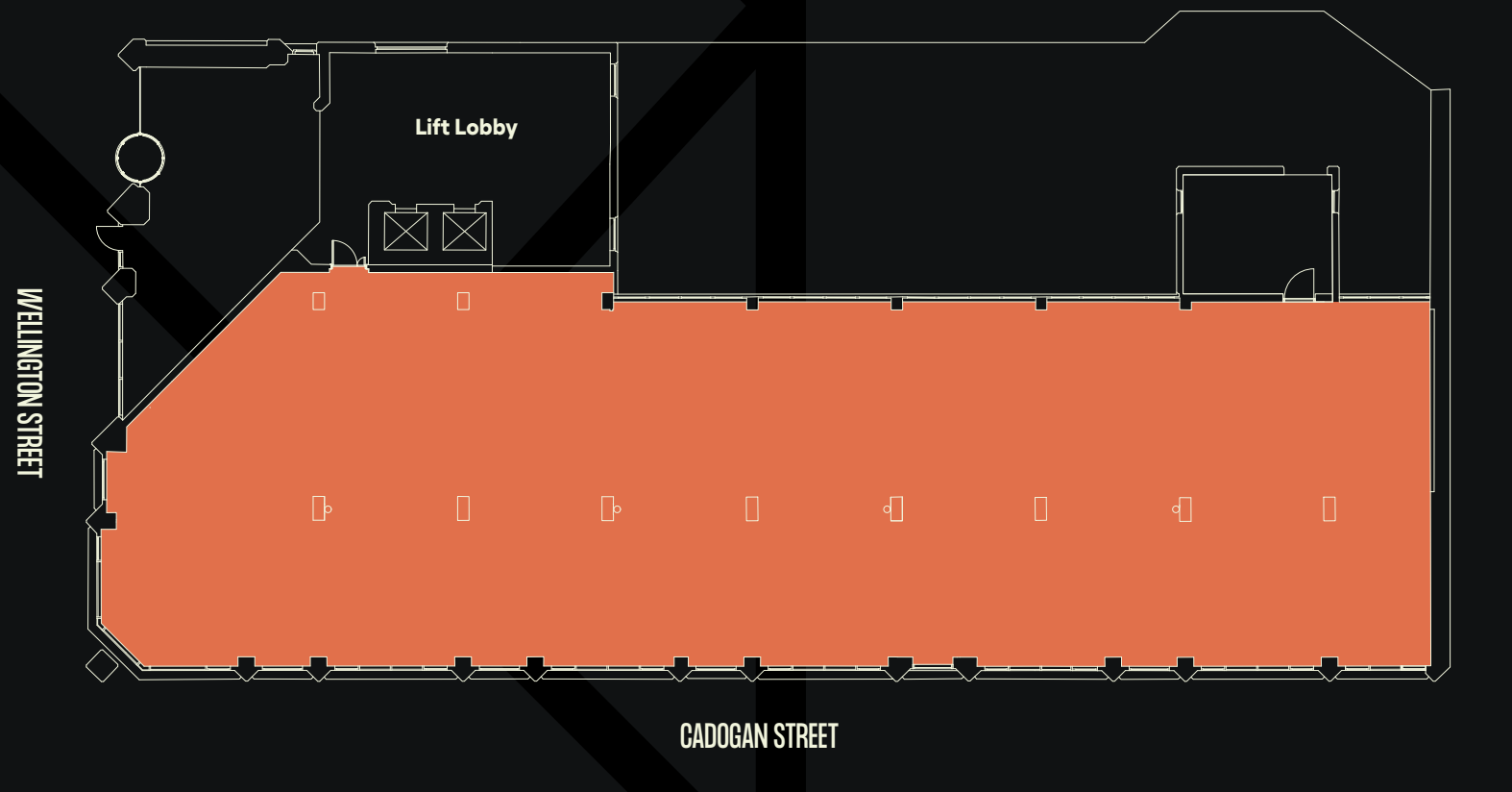


## Specification

The floors can be provided to the following specification:

- Exposed ribbed concrete slab
- Suspended lighting
- Newly decorated (70)
- Refurbished cable channels (70)
- Exposed VRF air conditioning system
- The floor can be split to provide suites from 2,500 sq ft

## Floor Plan



## LEASE

The suite is available on a new FRI lease on terms to be agreed.

## EPC

A copy of the EPC is available upon request.

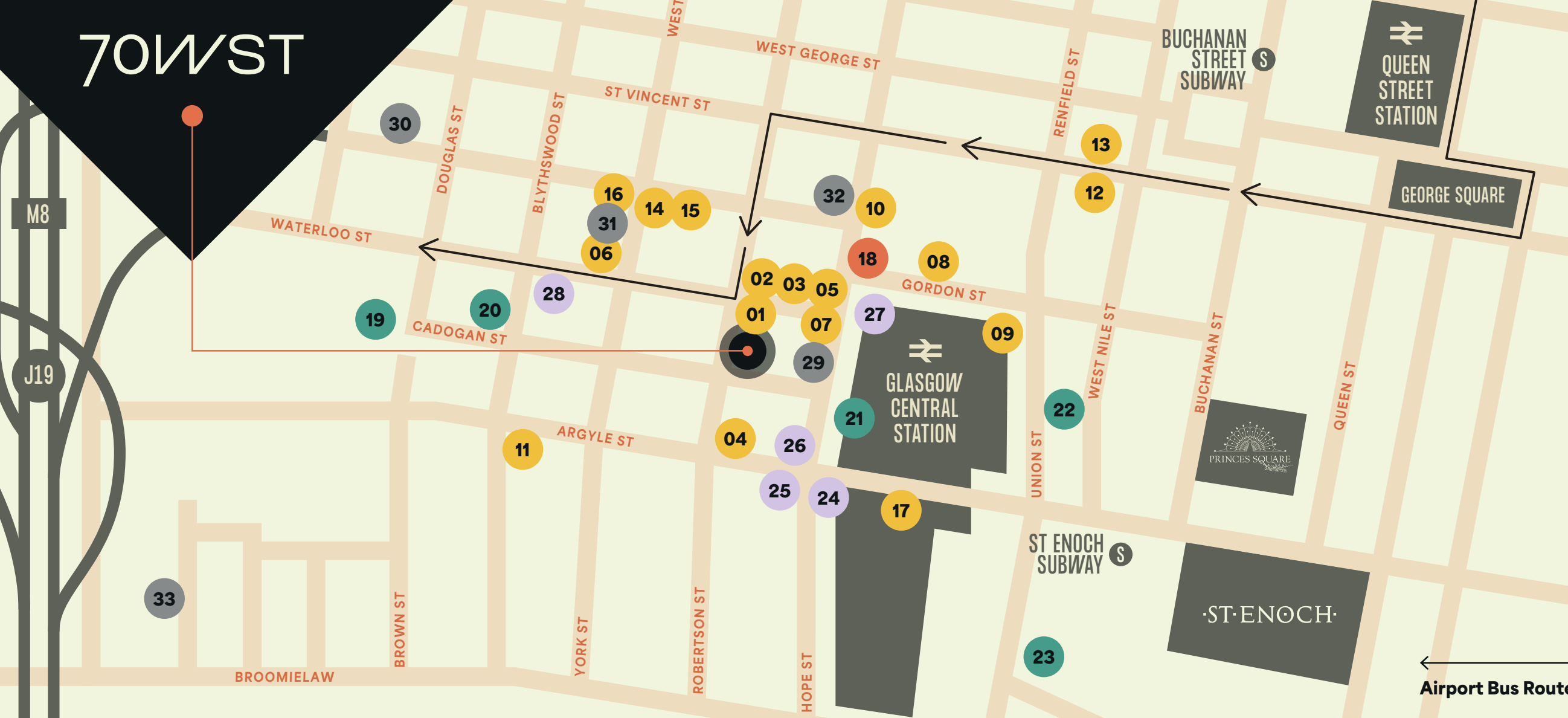
## LEGAL COSTS

Each party to be responsible for their own legal costs incurred in any transaction.

## RATING

For business rating information please visit the Scottish Assessors Association website: [www.saa.gov.uk](http://www.saa.gov.uk)

# 70WST



# Further Information & Viewing

For further information or to arrange an inspection please contact the joint letting agents:

## Ryden

## CBRE

**Gillian Giles**

07826 946 312  
gillian.giles@ryden.co.uk

**Sarah Hagen**

07468 724 253  
sarah.hagen@cbre.com

**Scott Farquharson**

07384 543 094  
scott.farquharson@ryden.co.uk

**Stefanie Tucker**

07880 455 948  
stefanie.tucker@cbre.com

## Location

70 Wellington Street is located within the heart of Glasgow's Central Business District, with a range of transport and retail/fitness amenities all within easy walking distance:

Central Station	2 minutes
Airport Bus Stop	2 minutes
Buchanan Street	5 minutes
Princes Square	5 minutes
St Enoch Subway	7 minutes
Queen Street Station	10 minutes

## AMENITIES:

- 01 Rhoderick Dhu
- 02 Piece
- 03 The Smokin' Fox
- 04 Co-op
- 05 Caffè Nero
- 06 Ho Wong
- 07 Nando's
- 08 Sainsbury's Local
- 09 Gordon Street Coffee
- 10 Mezcal
- 11 The Duke's Umbrella
- 12 Chakoo
- 13 Fat Hippo
- 14 Göst
- 15 Pret A Manger
- 16 Philpotts
- 17 Platform

## NEXTBIKE STATION:

- 18 Gordon Street

## CAR PARKING:

- 19 Cadogan Square Car Park
- 20 Q-Park Waterloo Street
- 21 NCP Glasgow Central
- 22 NCP Mitchell Street
- 23 Q-Park Jamaica Street

## HOTELS:

- 24 Motel One
- 25 Radisson Blu
- 26 YOTEL Glasgow
- 27 voco Grand Central
- 28 Hotel Indigo

## FITNESS:

- 29 PureGym
- 30 The Gym
- 31 F45 Gym
- 32 Beat Theory Fitness
- 33 NXT Level Fitness



Ryden/CBRE hereby gives notice that the information provided (either for itself, for any joint agents or for the vendors lessors of this property whose agent Ryden/CBRE is in this brochure is provided on the following conditions: 1. The particulars are set out as a general outline only, for the guidance of intending purchasers and/or lessees and do not constitute an offer or contract, or part of an offer or contract. 2. All descriptions, dimensions and references to this property's condition and any necessary permission for use and occupation, and any other relevant details, are given in good faith and are believed to be correct. However, any intending purchasers or tenants should not rely on them as statements or representations of fact but satisfy themselves of their correctness by inspection or otherwise. 3. No person in the employment of Ryden/CBRE, or any joint agents, has any authority to make or give any representation or warranty whatsoever in relation to the property or properties in this brochure. 4. All prices quoted are exclusive of VAT. 5. Ryden/CBRE shall have no liability whatsoever in relation to any documents contained within the brochure or any elements of the brochure which were prepared solely by third parties, and not by Ryden/CBRE. March 2025.