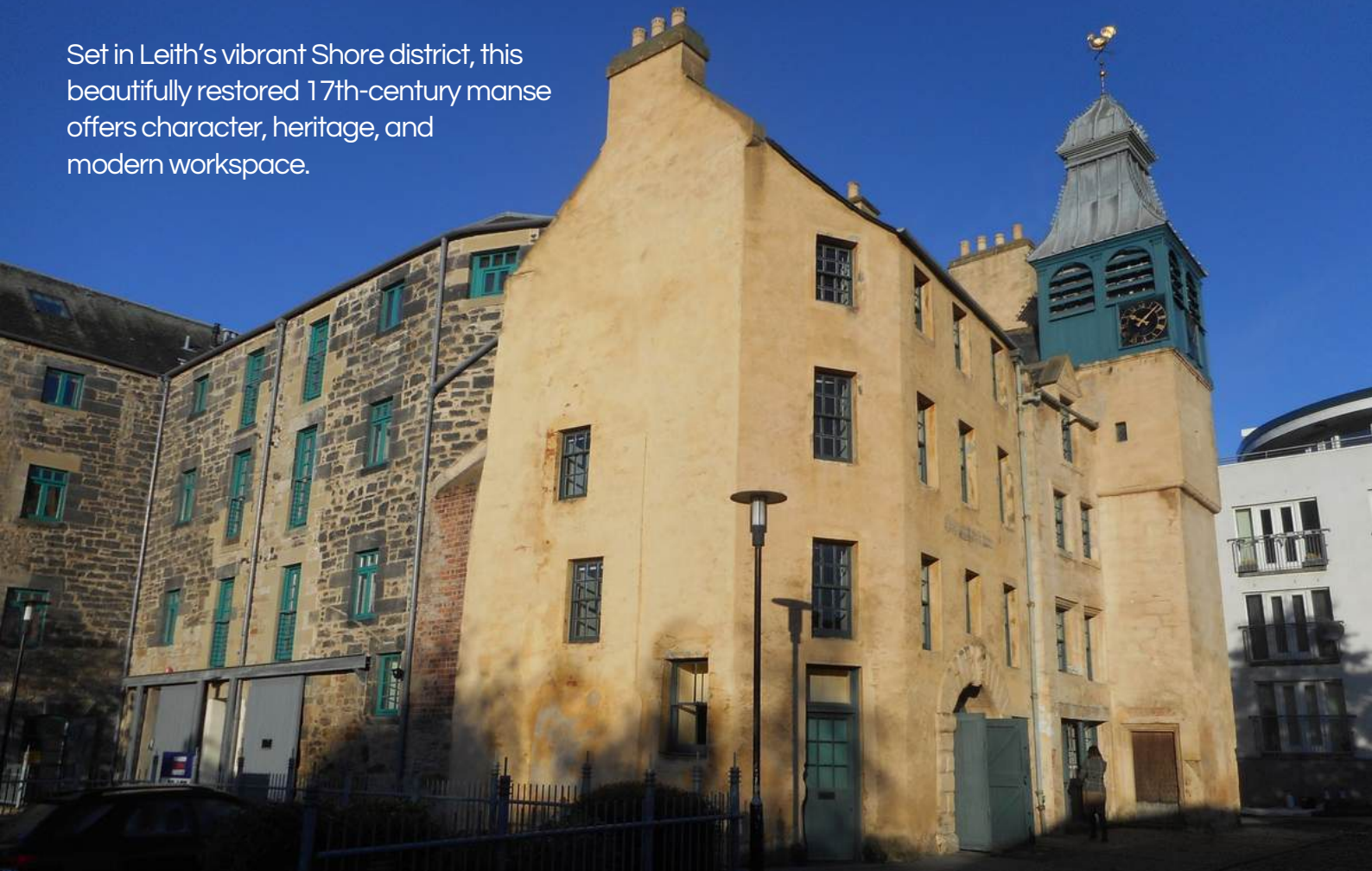


St. Ninian's Manse



Set in Leith's vibrant Shore district, this beautifully restored 17th-century manse offers character, heritage, and modern workspace.



A unique workspace in a landmark building



2,889 Sq Ft, 4 Floors



Flexible floor plans



Modern facilities



Prime Leith location



5 dedicated parking spaces



Historic landmark restored in 1998 by SHBT

Available to let as adaptable office space ideal for creative, tech, professional, and growing businesses seeking a distinctive base in Leith.

[Turn page to learn more](#)

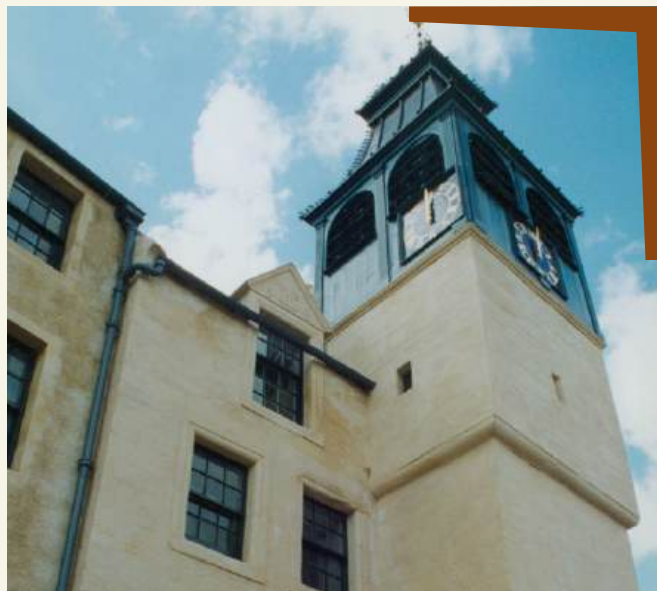
About the Building

St Ninian's Manse offers a rare opportunity to occupy a distinctive, historic workspace in one of Leith's most historic buildings.

Originally a 17th-century manse, the property has been sensitively restored by Scottish Historic Buildings Trust (SHBT), combining period character with functionality.

Set across four floors, it provides flexible office accommodation suited to a range of professional, creative and charitable organisations.

With a total area of 2,889 sq ft (269 sq m) and five dedicated parking spaces, St Ninian's Manse is ideal for occupiers seeking a workplace that reflects both heritage and ambition.



At a glance:

- Entire building available as a single tenancy
- Fully upgraded for contemporary office use
- Dedicated on-site parking for five vehicles
- Self-contained layout for privacy, security, and autonomy



Historic landmark restored in 1998 by SHBT



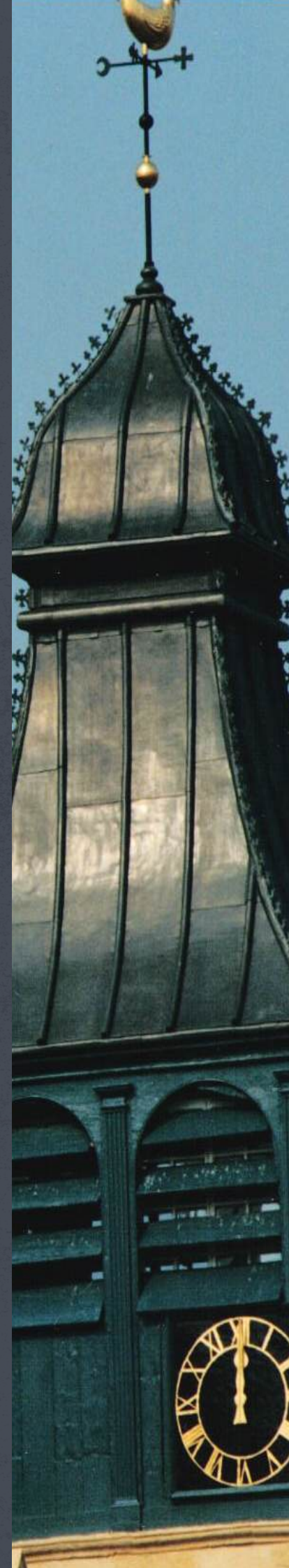
Four floors of adaptable office space



Modern amenities throughout



Excellent Shore location

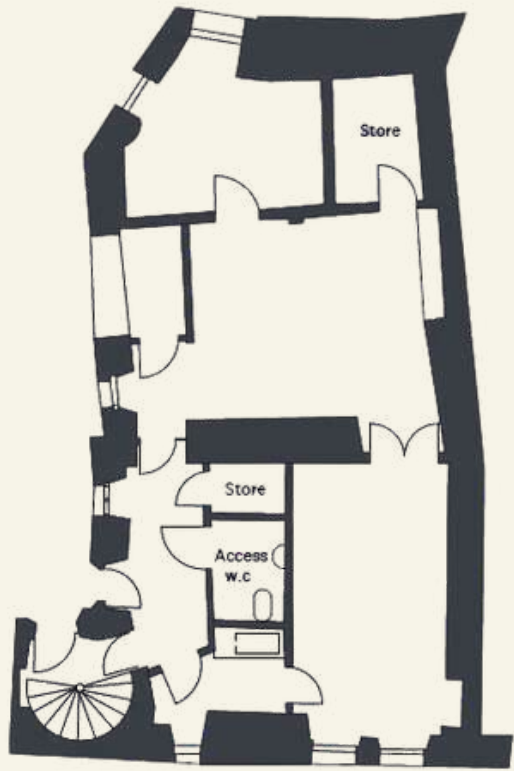


St Ninian's Manse stands on Quayside Street at the heart of Leith's Shore district - an area known for its historic character, creative community and exceptional amenities. Just two miles from Edinburgh's city centre, the location benefits from excellent transport links and a vibrant mix of restaurants, cafés and cultural venues.



Built in the late 17th century, the Manse was extensively renovated in 1998 by SHBT, who now manage the building, transforming it into high-quality office accommodation while preserving its original fabric.

≡ Ground Floor



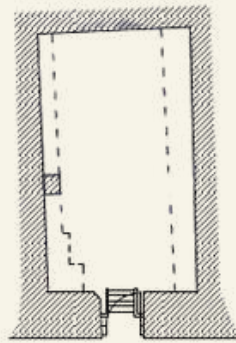
Ground floor layout

57 sq m
611 sq ft

Basement floor layout

13 sq m
140 sq ft

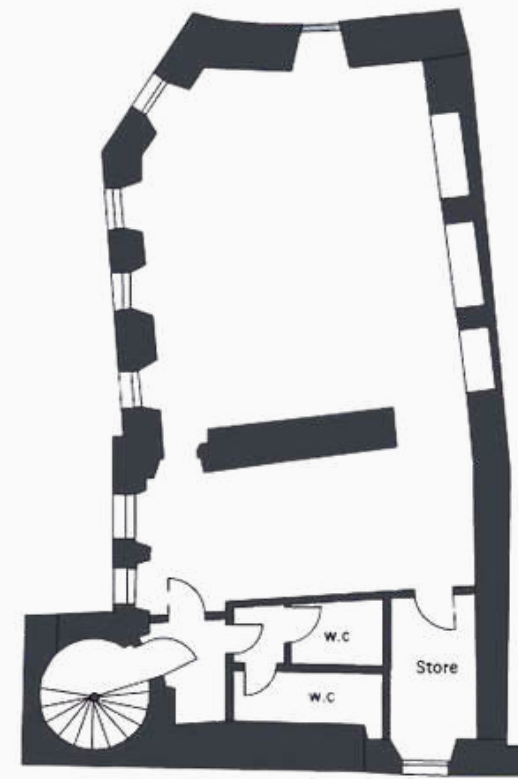
+ 5 dedicated parking spaces



- Accessible entrance
- Two principal rooms with period details
- Direct street access
- Accessible toilet
- Shared kitchen
- Original stone features and timber floors retained



≡ First Floor



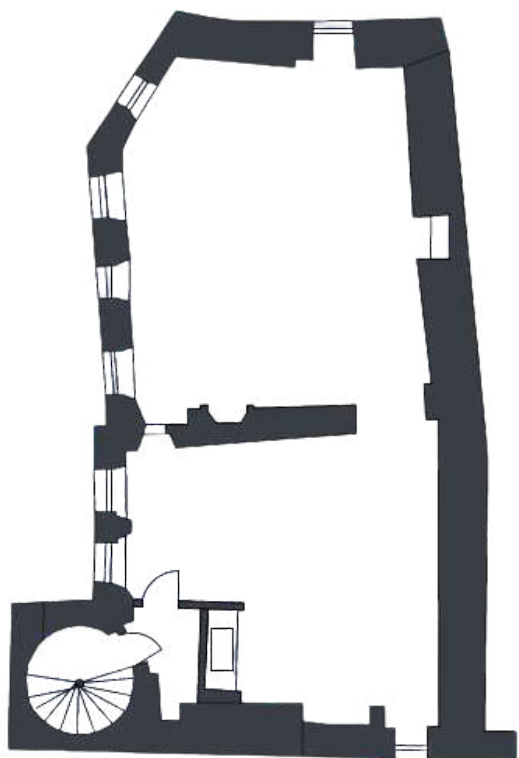
First floor layout

62 sq m
665 sq ft

- Spacious open-plan layout
- Original architectural details
- Suitable for a range of uses



≡ Second Floor



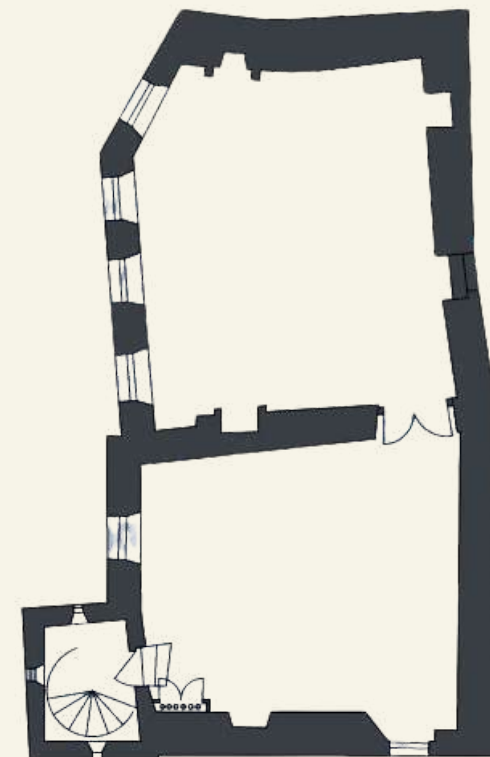
Second floor layout

71 sq m
665 sq ft

- Exposed stone features
- Kitchenette
- Open-plan layout with adaptability



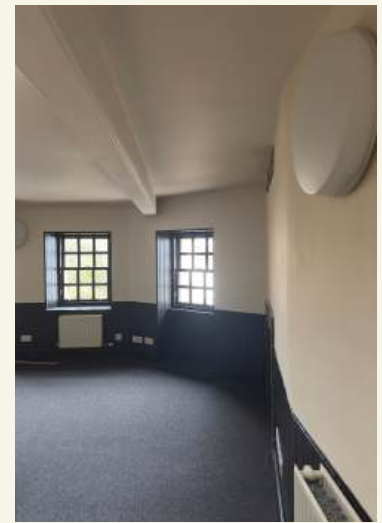
≡ Third Floor



Third floor layout

79 sq m
845 sq ft

- Open-plan flexible layout
- Adaptable workspace
- Exposed timber roof frame





For more information
or to book a viewing

Email: info@shbt.org.uk

Call: 0131 510 7879

Available to let as
adaptable office space
ideal for creative, tech,
professional, and
growing businesses
seeking a distinctive
base in Leith.



Scottish Historic
Buildings Trust is a
Registered Charity
(SC034507)

St. Ninians Manse