

11960 SOUTH HARLAN RD

CENTRAL VALLEY
LATHROP

11960 South Harlan Road
Lathrop, CA 95330



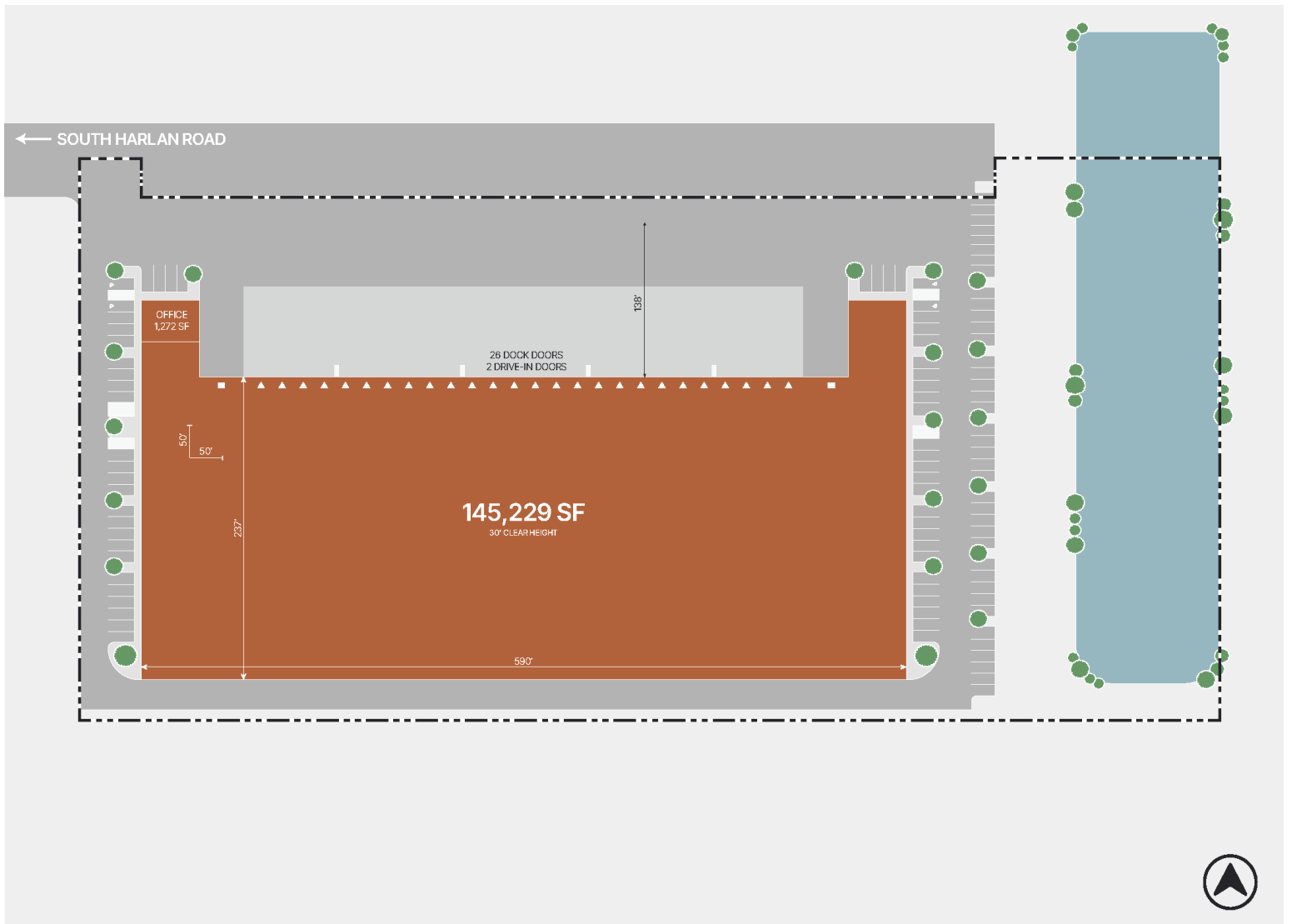
FOR LEASE

±145,229 SF



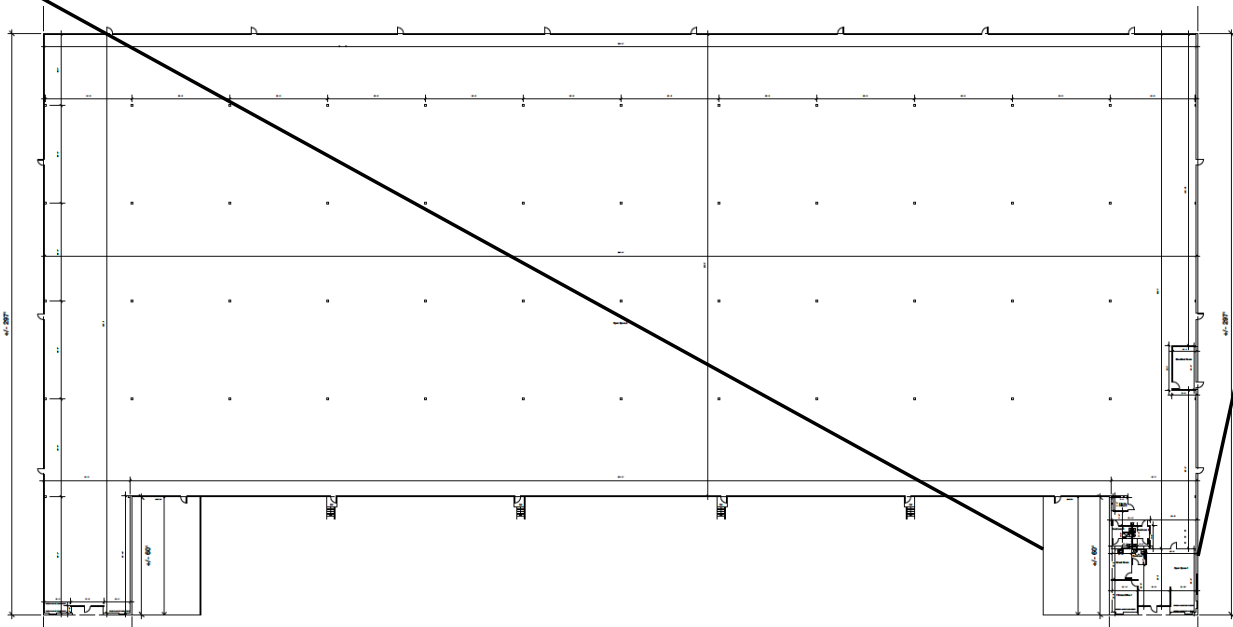
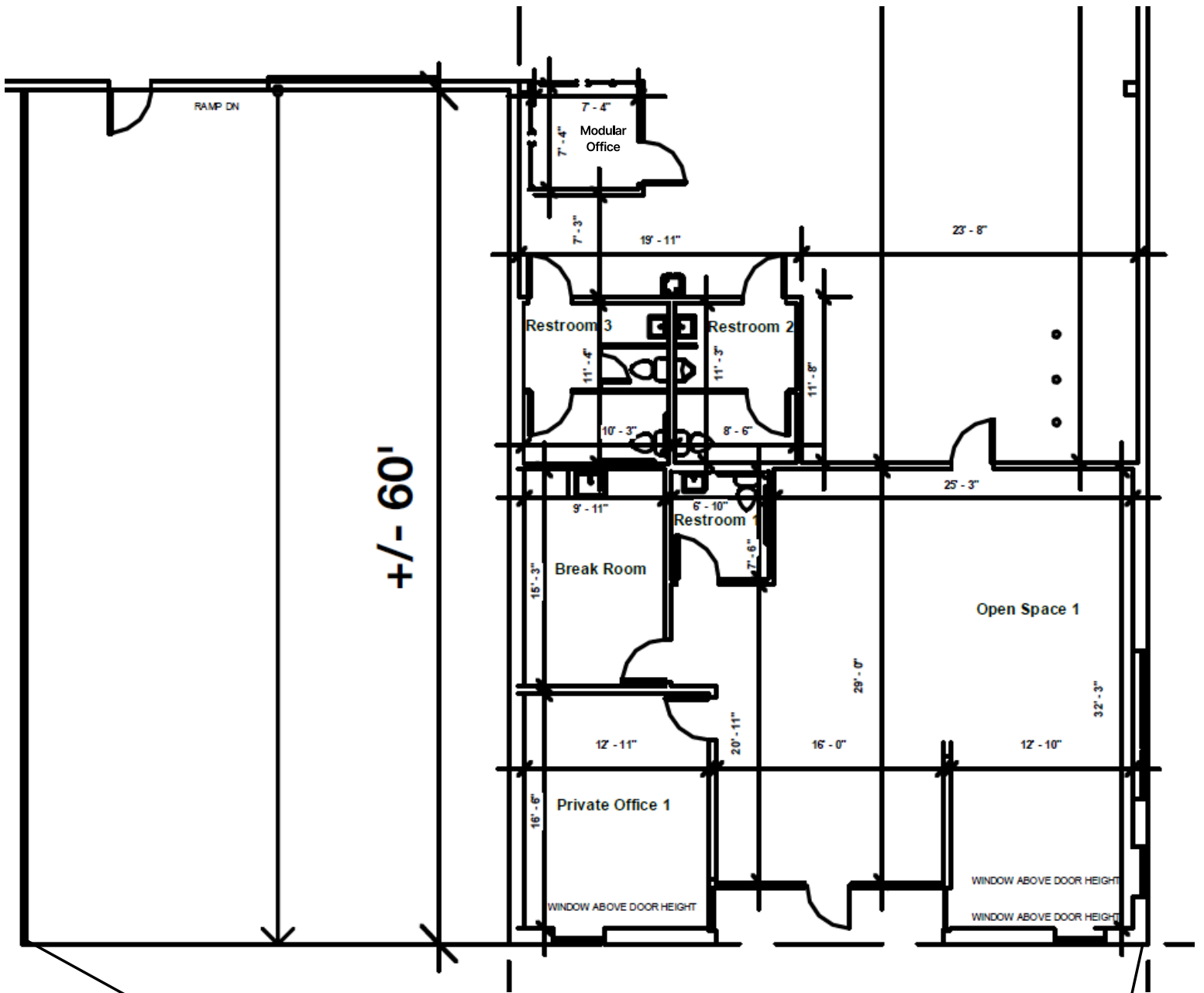
LEASED BY

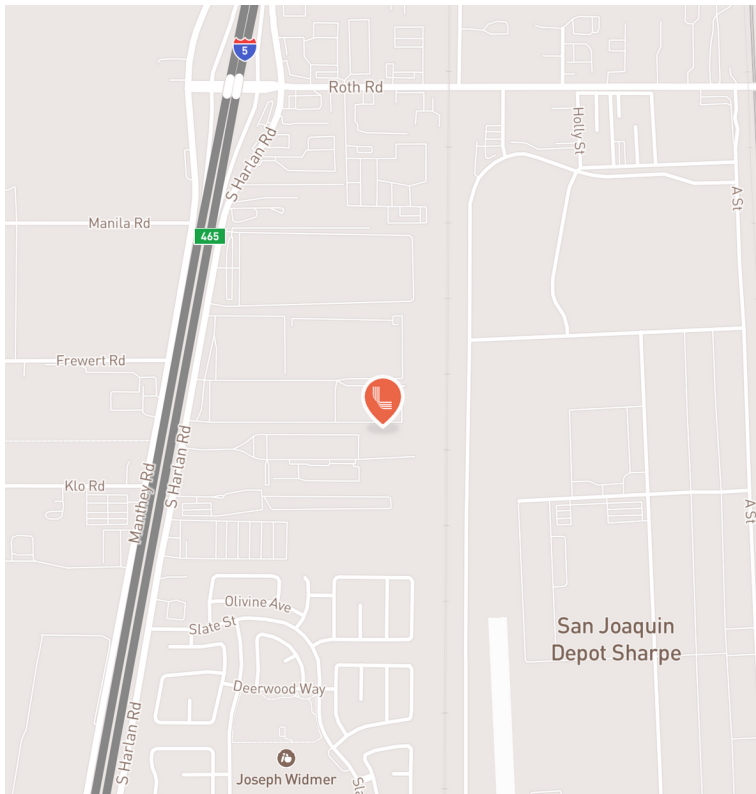




BUILDING FEATURES

Available SF	±145,229 SF
Office SF	±1,272 SF
Dimensions	±590' x ±237'
Column Spacing	±50' x ±50'
Clear Height	±30' (minimum)
Dock-High Doors	26 (±9' x ±10')
Grade-Level Doors	2 (±12' x ±14')





BUILDING FEATURES

Truck Court	±140'
Concrete Apron	±70'
Power	1,500 Amps, 277/480V
Skylights	Throughout Warehouse
Sprinklers	ESFR Fire Protection
Zoning	IL (Limited Industrial) City of Lathrop

CONTACT INFORMATION



11960 South Harlan Road
Lathrop, CA 95330

Tyson Vallenari, SIOR

tyson.vallenari@cushwake.com
(510) 919-2328

CA Lic. 01480887

Blake Rasmussen

blake.rasmussen@cushwake.com
(209) 481-7044

CA Lic. 01010250

Kevin DalPorto

kevin.dalporto@cushwake.com
(209) 601-2476

CA Lic. 01212935

This is not an offer or acceptance of an offer to lease space. A lease will only be offered or made in a written agreement signed by landlord. No representation or warranty of any kind is made by landlord unless set forth in a written definitive lease executed by the landlord.



LEASED BY

